

CUSTOMER INFORMATION



KTM



THE KTM X-BOW COMP R

SUPER SPORTS CAR TECHNOLOGY FOR THE 21st CENTURY

» **Produced perfectly ... by hand**

The KTM X-BOW has been manufactured in a special-purpose plant in Graz since June 2008. One of the world's most modern vehicle limited-production facilities was built while KTM developed ingenious warehousing, special transport logistics (eg. transport containers for the valuable carbon-fibre parts) and special assembly technologies.

» **Revolutionary. Pure. Radical.**

The KTM X-BOW COMP R is available through the first U.S. sales partners: HMC Racing in Cato, Wisconsin and ANSA Motorsports in Miami Gardens, Florida. Exclusively for the first U.S. customers, it is possible to acquire the special limited edition KTM X-BOW COMP R 1ST EDITION.



READY TO RACE
» www.ktm.com

» THIS CAR IS MANUFACTURED FOR TRACK USE ONLY FOR THE REGION USA AND CANADA

In-line 4-cylinder gas engine with direct injection, exhaust turbocharging with charge-air cooling

» Approved for track use only

Performance	220 kW (300hp)
Displacement	1,984 ccm
Max. speed	144 mph
Torque	up to 420 Nm
Acceleration 0 – 62 mph	3,9s
Weight excl. fuel	1,759 lbs





» STANDARD CONFIGURATION

» RACING INTERIOR

- Steel roll over structure (driver + co-driver)
- 6-point seat belt (only-driver)
- Battery cut-off switch set
- Racing headrest – left hand drive
- Racing seat padding

» RACING EXTERIOR

- racing headlight covers
- bonnets either electric orange or white





READY TO RACE
» www.ktm.com

» STANDARD CONFIGURATION

» TECHNICAL PARTS

- Racing exhaust
- Quick shifter
- Racing fuel cell (FT3-specification)
- Fire extinguisher system
- Racing pushrods adjustable
- Safety battery
- Michelin Slicks
- Racing brake-pads
- Racing springs

BEWARE OF BLAST

KTM

KTM**FIRST BATCH**
01 OF 10**READY TO RACE**
» www.ktm.com**» SPECIAL EDITION LIMITED TO TEN PIECES**

In-line 4-cylinder gas engine with direct injection, exhaust turbocharging with charge-air cooling

» Not approved for street use

Performance	258 kW (350hp)
Displacement	1,984 ccm
Max. speed	150 mph
Torque	up to 435 Nm
Acceleration 0 – 62 mph	3,2s
Weight excl. fuel	1,786 lbs

**KTM**

KTM



FIRST BATCH
01 OF 10

READY TO RACE
» www.ktm.com

» SPECIAL FEATURES

- Fighter-jet-like design
- 350 – horsepower output
- Sequential gearbox
- Extensive aero packages
- Nearly all extras added



KTM

THE KTM X-BOW COMP R

READY TO RACE
» www.ktm.com

SUSPENSION COMPONENTS

Springs and dampers from WP Suspension

ROLL BARS

Steel roll-over structure

ENGINE

2.0-litre TFSI from Audi; gasoline direct injection; four-cylinder engine

FIRE EXTINGUISHER SYSTEM

Springs and dampers from WP Suspension

CRASH BOX

Carbon-aluminium sandwich construction

TIRE

The best from Michelin

RACING SEAT BELT

Specially adapted and optimized; shoulder strap: HANS® System

RACING UNDERBODY

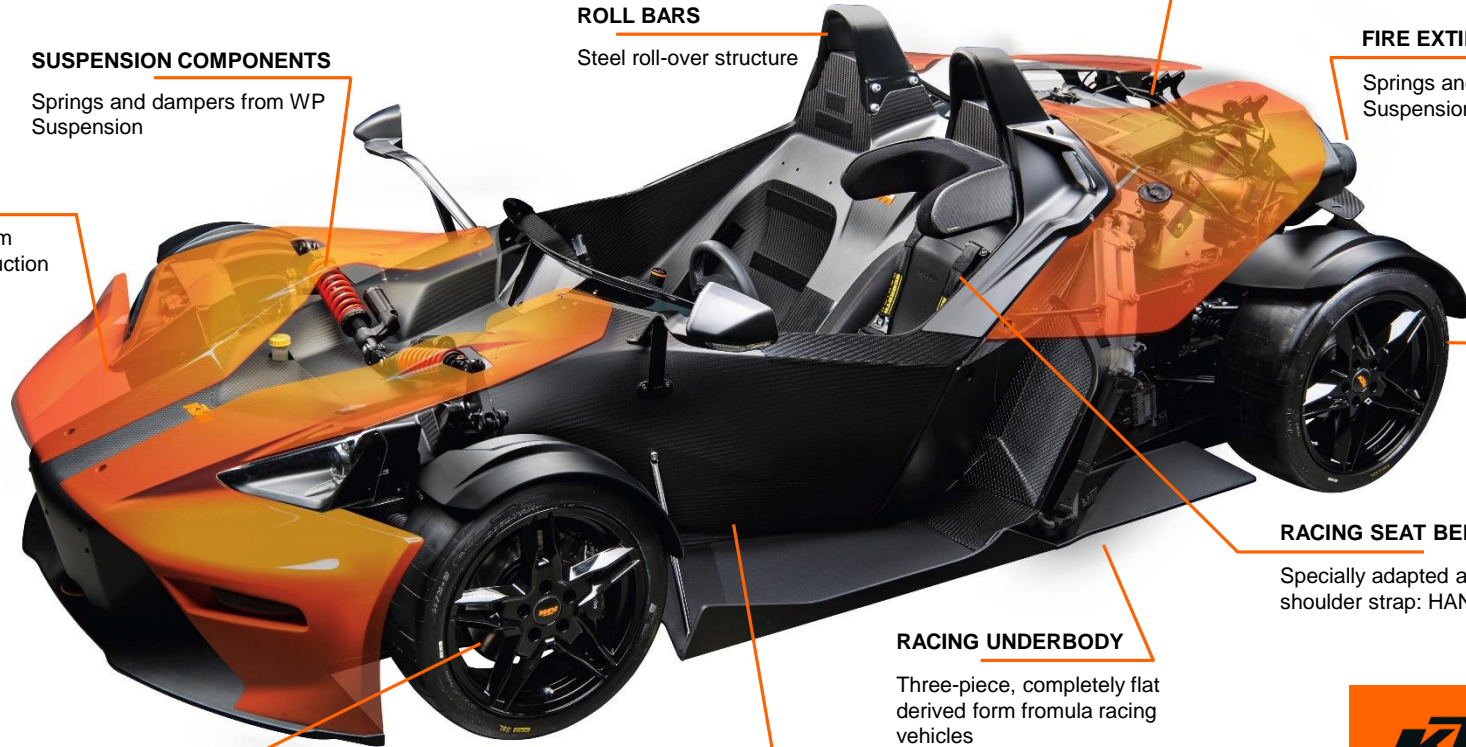
Three-piece, completely flat derived from formula racing vehicles

MONOCOQUE

Manufactured by Wethje; two-part, lightweight, carbon monocoque

BRAKES

Brembo brake system



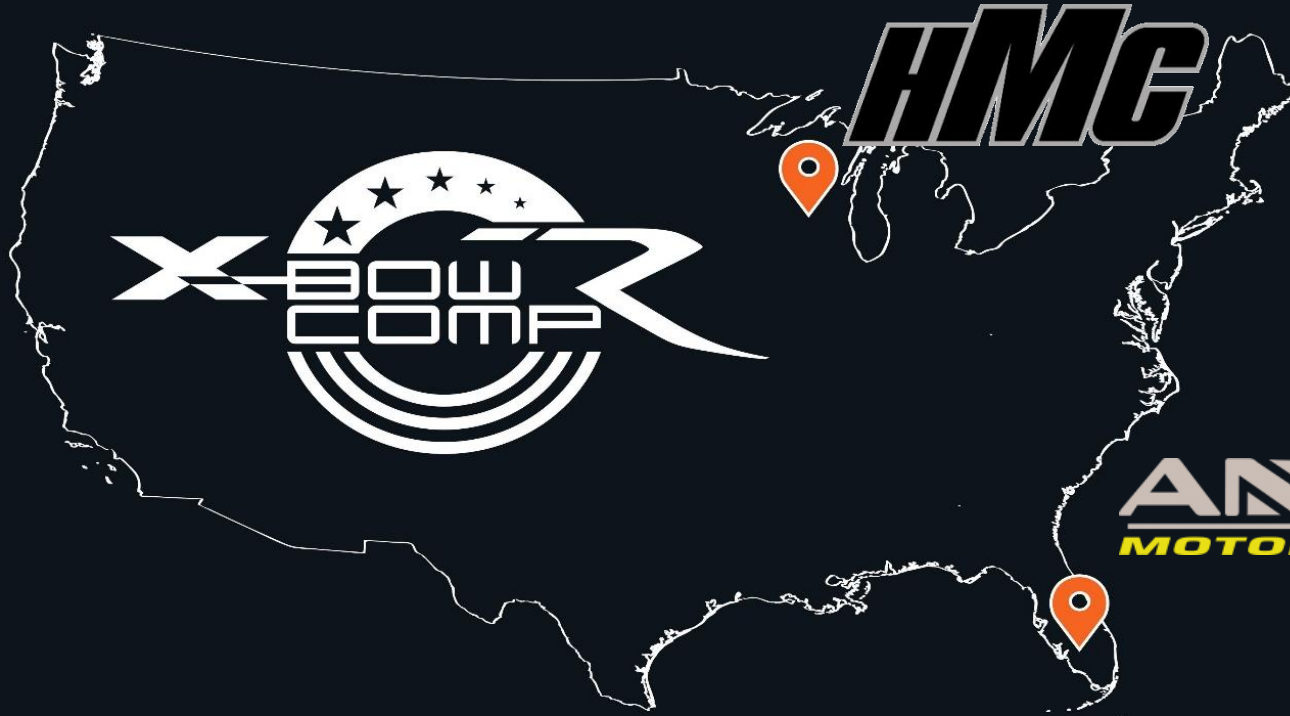
KTM

KTM



CURRENT PARTNERS

READY TO RACE
www.ktm.com





CURRENT PARTNERS CONTACT



HMC RACING

Mitch Hansen
14245 Reifs Mills Road
Cato, Wisconsin 54230
e-mail: hmcracing@hotmail.com
phone: 920-424-9639



ANSA MOTORSPORT

Alain Nadal
Anadal@ansamotorsports.com

Patrick Otto Madsen
Pmadsen@ansamotorsports.com

Phone 305-760-2966



KTM X-BOW AFTER SALES POWERPARTS

- » More than 100 additional PowerParts for car tuning
- » High quality ALPINESTARS functional wear
- » Casual & Accessories



KTM

KTM X-BOW UNIQUE

Customization

- » Customization of Design (30.000 RAL-Code colours!)
- » Potential performance enhancement (engine to suspension)
- » Numerous powerparts (crafted leather seats, manual air condition, multimedia system, rear view camera, etc.)
- » Adaptation of racing technology for street use



KTM

SUCCESSFUL

MORE THAN **1.100** SOLD VEHICLES

WORLDWIDE

AVAILABLE IN OVER **40** COUNTRIES

EXCLUSIVE

NOT MORE THAN **100** CARS PER YEAR

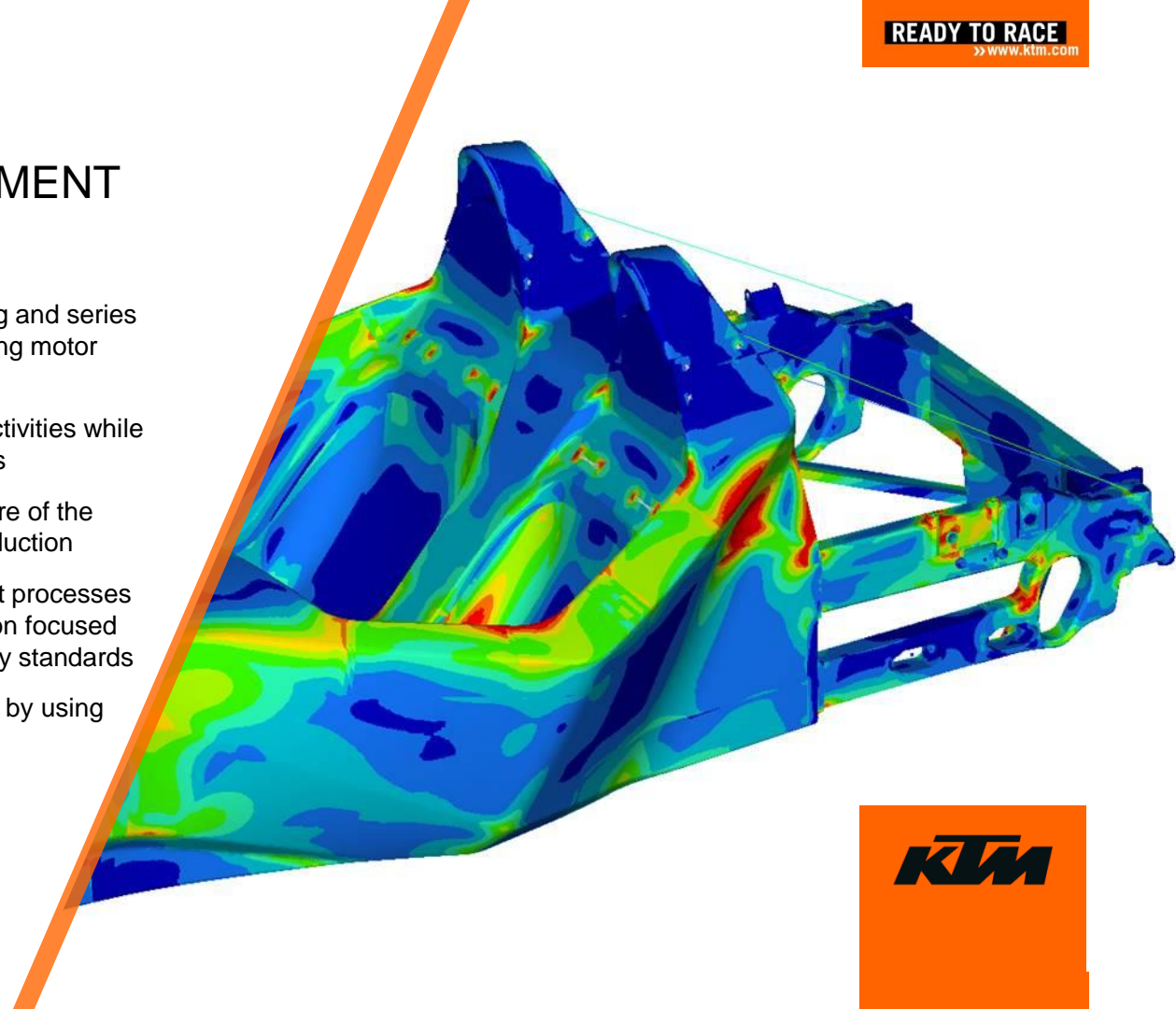
X-BOW

KTМ

KTM SPORTCAR

TECHNICAL DEVELOPMENT

- » Merger of the development for racing and series production in one team – with a strong motor racing orientation also in the series
- » Agile and adoptable development activities while using new project management tools
- » The development is specifically aware of the requirements of the small-scale production
- » Adaptation of the usual development processes to quantities of small-scale production focused on the customary quality and security standards
- » Development of innovative solutions by using the newest technologies



KTM SPORTCAR

USP – FORMULA TECHNOLOGY/SAFETY

- » World's first series production vehicle with a carbon-fibre monocoque manufactured to Formula 3 racing standards!



CRASHBOX

CRASHBOX

Carbon-aluminium sandwich construction, safety regulations of FIA GT and FIA Formula 3



MONOCOQUE

MONOCOQUE

A full carbon-fibre construction, weighing only 89 kg with a extremely high torsional stiffness of 35000 Nm/°

KTM SPORTCAR

USP – SAFETY



BELTS

Driver and passenger (optional) are protected by six-point safety belt from Schroth, which is also used in racing.



ROLL BARS

In the event of a rollover, optimum protection is guaranteed by the aluminium roll bars integrated in the monocoque. They withstand loads of up to 2.5 times the weight of the vehicle.



US PRICING

READY TO RACE
» www.ktm.com

BASIC KTM X-BOW COMP R Base Model		Exchange rate 1,22
MSRP Net excl. VAT, country specific tax and transport	85.000,00 EUR	103,700.00 USD

BASIC KTM X-BOW COMP R 1st BATCH EDITION		Exchange rate 1,22
MSRP Net excl. VAT, country specific tax and transport	139.000,00 EUR	169,580.00 USD

All prices without VAT, country specific tax and transport, car and parts invoicing at the daily rate of exchange, all prices subject to change, errors and changes excepted





» KTM X-BOW GT4 – WORLDWIDE „READY TO RACE“

An unrivaled car in terms of efficiency, cost-effectiveness and safety, the unique result out of the cooperation between highly specialized companies.

» Racing Series:

GT4 European Series, VLN, China GT, Pirelli World Challenge, 24H Series, various national championships

Performance	up to 410 bhp
Displacement	1.984 ccm
Max. speed	265 km/h
Torque	up to 500 Nm
Acceleration 0 – 100 km/h	3,9s
Weight excl. fuel	975 kg



KTM X-BOW DEALERSHIP

DEALER REQUIREMENTS

- » Available equipment
 - Lifting device front
 - Lifting device rear
 - Car jack
 - Special tooling
 - diagnostic system

- » Standard VAG tools for maintenance and repairs are necessary

- » VCDS diagnostic system recommended

- » Various shop branding possibilities



KTM

READY
TO »»
RACE

READY TO RACE
» www.ktm.com

KTM