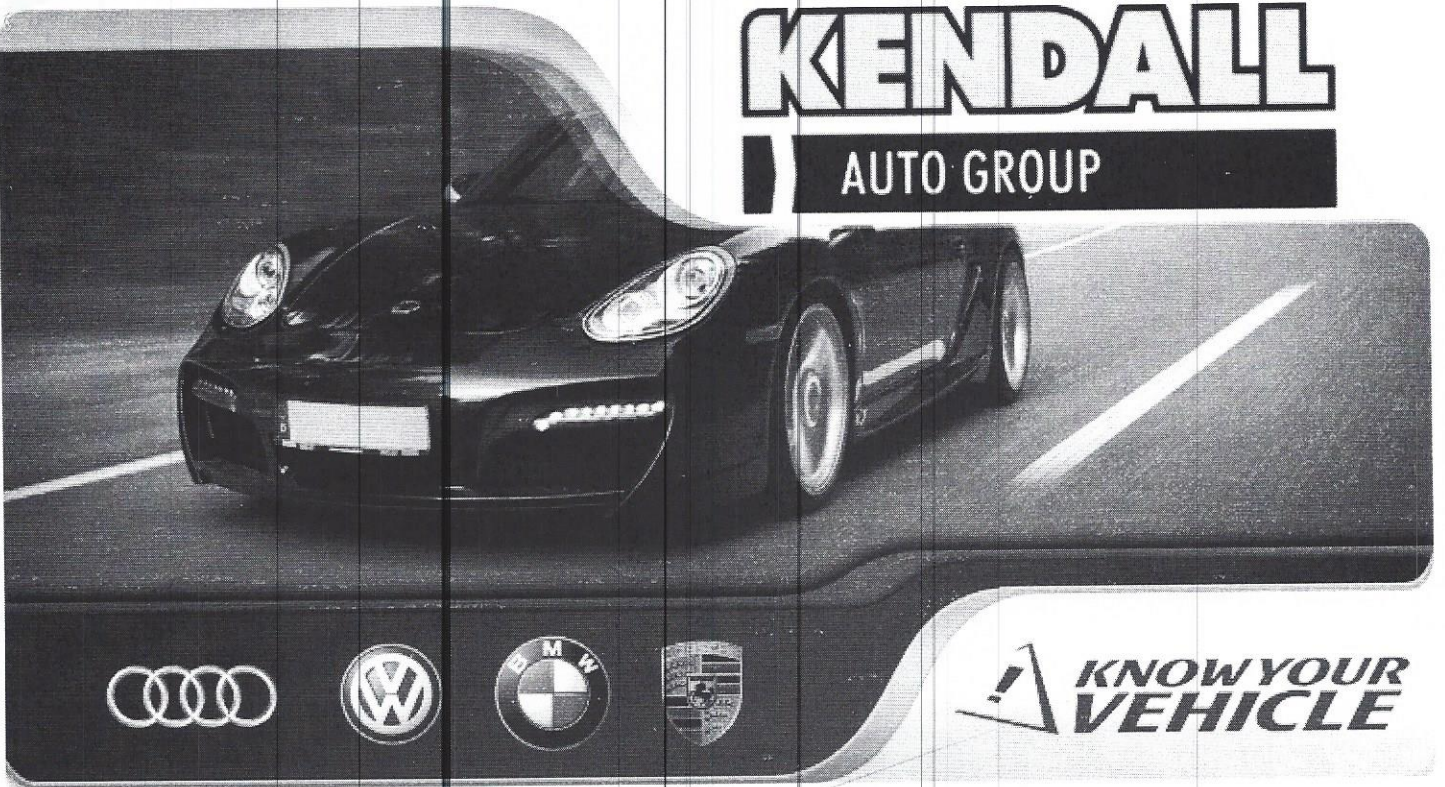


# KENDALL

## AUTO GROUP



OUR VALUED CUSTOMER

INVENTORY: BU1034

**Jason Rivers**  
*Service Consultant*

**A. Klone**  
*Certified Technician*

### YOUR VEHICLE

Year 2007	Make Porsche		Model 911	Engine Type 3.6L H6 DOHC (MFI)
Odometer 33,426	VIN # WP0AC29917S793106		License #	Date 10/31/2016



# Vehicle Care Commitment

---

## It's about "Peace of Mind..."

### INVENTORY: BU1034,

Thank you for choosing Kendall of Bend's service department to handle your 2007 Porsche 911's service needs. In order to provide the quality service you deserve, we have invested in the latest diagnostic equipment and information systems. These help us fully understand your vehicle's service and maintenance requirements so that we can service your Porsche in the most comprehensive and economical way possible.



We are pleased to present to you a "Know Your Vehicle" report today. It's important to us that you leave our dealership with peace of mind, so we take the extra time necessary to analyze your 911's health to make sure it is operating at its optimum levels. This bumper-to-bumper inspection report will help you better understand your vehicle's performance and health. Staying on top of your vehicle's health is vitally important to ensuring your safety on the road.



Thank you for this opportunity to assist you. We appreciate your business. Please feel free to contact your service advisor if you have any questions or concerns. We will do everything we can to put your mind at ease and keep you and your family safe on the road.



## How we give you "Peace of Mind..."

---

To help you understand what your vehicle needs to stay in top operating condition, we:

- Perform a world class visual inspection on your vehicle every visit
- Review your vehicle's maintenance schedules and search our extensive database to uncover anything we believe you should know about your vehicle based on its odometer reading and time on the road
- Make recommendations and complete a Treatment Plan for your vehicle
- Offer a complete easy to read and understand report that enables you to make an educated decision for your vehicle's service needs. Items on the report will be classified as follows:
  - Pass - Items are new or "like new" and do not require service at this time
  - Caution - Items that are dirty or showing signs of wear and would benefit from being serviced soon
  - Fail - Items that have either worn below minimum specifications or are no longer doing what it was designed to do and need to be repaired immediately

*DISCLAIMER: Addressing any identified issues listed by the report, should improve the safety and performance of your vehicle. However, please remember that the inspection is limited to a visual inspection of the items listed on the report without disassembling or test driving your vehicle. Therefore, it is not possible for the technician to see or identify all potential defects, especially those that are internal to the engine, transmission, driveline, electrical system or other components. The cleanliness of the vehicle both inside and out at the time of the actual inspection may reduce the accuracy of the inspection. Your vehicle may have conditions that are not evident at the time of the inspection or otherwise not presented or noticed during the inspection process. Therefore, the inspection and condition report does not provide any guarantee or warranty that the vehicle will not break down in the future, or have conditions that were undetected during the inspection or were omitted from the report.*





# Original Customer Requests

The following is what you requested we perform or investigate regarding your vehicle:

- ✓ 1. USED VEHICLE INSPECTION
- ✓ 2. REMOVE SPARK PLUGS AND INSPECT.



# Package Results

Kendall of Bend WorldClass Inspection

Cautioned Task	Observation	Recommendation	Done
Check brake fluid level and condition	Found brake fluid is discolored	Perform brake system fluid exchange	

Passed Task	Observation	Recommendation	Done
Fill windshield washer fluid	Found washer fluid level low: Filled to proper level		
Measure rear brake pads	12 mm		
Measure front brake pads	10 mm		
Left front tire tread depth	Left front tire tread measures 5 mm		
Left rear tire tread depth	Left rear tire tread measures 5 mm		
Right front tire tread depth	Right front tire tread measures 5 mm		
Right rear tire tread depth	Right rear tire tread measures 5 mm		
Check and adjust front tire pressure	Tire pressure was set to manufacturer specification - Check tire pressures monthly		
Check and adjust rear tire pressure	Tire pressure was set to manufacturer specification - Check tire pressures monthly		
Inspect overall tire wear and condition	All tires require inspection next service		

## Passed Tasks

- |   |                                       |   |
|---|---------------------------------------|---|
| ✓ Inspect exhaust system for leaks, damage, and loose parts | ✓ Inspect for wheel bearing free play | ✓ Inspect axles, driveshaft and CV joints/boots |
| ✓ Inspect engine mounts                                     | ✓ Inspect transmission mounts         | ✓ Inspect fuel tank, lines, and connections     |

RO#: 86036927

Kendall of Bend

1045 SE Third Street Bend, OR • (800) 842-1584 • www.kendallautooregon.com



- ✓ Inspect air filter
- ✓ Check engine oil level and condition
- ✓ Inspect hazard light operation
- Inspect taillight, turn signal, and side marker assemblies for cracks and damage
- ✓ Check horn operation
- ✓ Measure rear brake pads
- ✓ Inspect instrument cluster warning lamps
- ✓ Inspect cabin air filter (if equipped)
- ✓ Inspect steering components
- ✓ Inspect engine for oil leaks
- ✓ Inspect cooling system for leaks
- ✓ Inspect steering system for leaks
- ✓ Left rear tire tread depth
- ✓ Check and adjust front tire pressure
- ✓ Check power locking system operation
- ✓ Inspect lower engine cover
- ✓ Inspect rear differential for leaks

- ✓ Fill windshield washer fluid
- ✓ Check engine coolant level and condition
- ✓ Inspect brake light operation
- Inspect headlight low and high beam operation
- ✓ Inspect heat and air conditioning operation
- ✓ Measure front brake pads
- ✓ Inspect windshield wiper blades
- ✓ Inspect drive belts
- ✓ Inspect front suspension components
- ✓ Inspect transmission for leaks
- ✓ Inspect fog/driving lights (if equipped)
- ✓ Inspect sway bar components
- ✓ Right front tire tread depth
- ✓ Check and adjust rear tire pressure
- ✓ Check hood strut(s)
- ✓ Inspect windshield for cracks, chips and pitting
- ✓ Inspect sunroof for proper operation

- ✓ Check power steering fluid level and condition
- ✓ Check transmission fluid level and condition (if applicable)
- ✓ Inspect reverse light operation
- Inspect wiper and washer operation
- ✓ Inspect dash and interior lights
- ✓ Inspect brake system components
- ✓ Inspect battery and terminals and cables
- ✓ Inspect all hoses and clamps
- ✓ Inspect rear suspension components
- ✓ Inspect brake system for leaks
- ✓ Inspect rear wiper blade (if applicable)
- ✓ Left front tire tread depth
- ✓ Right rear tire tread depth
- ✓ Check power window operation
- ✓ Inspect daytime running lights (If equipped)
- ✓ Inspect overall tire wear and condition

Additional Observations	Recommendation
aftermarket front brake rotors	<ul style="list-style-type: none"> <li>replace front pads and rotors</li> <li>install rear brake sensors</li> </ul>
incorrect exterior bulbs installed at side marker and license plate	install correct bulbs

## Recommended Services

Our technicians recommend the following services for your vehicle.

Original Customer Requests	Status	Cost	Deferred	Approved
1. USED VEHICLE INSPECTION		\$400.00		X
2. REMOVE SPARK PLUGS AND INSPECT.		\$563.16		X
<b>Subtotal</b>		<b>\$963.16</b>		<b>\$963.16</b>
Inspection & Additional Recommendations	Insp Status	Cost	Deferred	Approved
replace front pads and rotors (aftermarket front brake rotors)	Fail	\$1,951.83		



Inspection & Additional Recommendations	Insp	Status	Cost	Deferred	Approved
install rear brake sensors (aftermarket front brake rotors)		Fail	\$114.48		
install correct bulbs (incorrect exterior bulbs installed at side marker and lic plate)		Fail	\$10.50		
<b>Subtotal</b>			<b>\$2,076.81</b>		
Perform brake system fluid exchange (Found brake fluid is discolored)	x	Caution	\$45.60		See AI-4
<b>Subtotal</b>			<b>\$45.60</b>		
Totals, Taxes and Fees			Cost	Deferred	Approved
Estimate Subtotal			\$3,085.57	\$0.00	\$963.16
<b>Estimate Total</b>			<b>\$3,085.57</b>		<b>\$963.16</b>
For "See AI-" items see the "Additional Information" section			<input type="checkbox"/>		



## Additional Information

Below is information we feel would help you better understand some of the reasons for taking preventive maintenance steps -- steps that help to ensure the reliability and safety of your vehicle for you and your family.

\*\* The following section may contain instructions for servicing various components of your vehicle. These are an overview of the process that will be performed by a skilled technician in our shop. They are not intended to be a guide for a "do-it-yourself" operation.

### Brake fluid exchange service

AI-4

#### Operation Description:

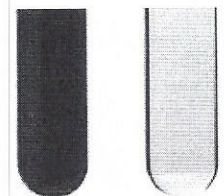
One of our skilled technicians will check the condition of your vehicle's brake fluid and, if necessary, remove contaminated fluid from the brake lines and master cylinder, replace the old fluid with appropriate brake fluid. The entire brake system will be inspected for leaks, master cylinder corrosion, worn pneumatic parts, harmful varnish build-up, broken or rusted bleeder valves, worn rotors and drums, and air in the brake lines.



Harmful deposits on brake master cylinder piston assembly

#### Significance:

Does your vehicle's brake pedal feel "spongy"? Brake fluid becomes contaminated over time and use. Heat and moisture can cause brake failure. Contaminated fluid leads to expensive repairs.



Brake fluid before and after service