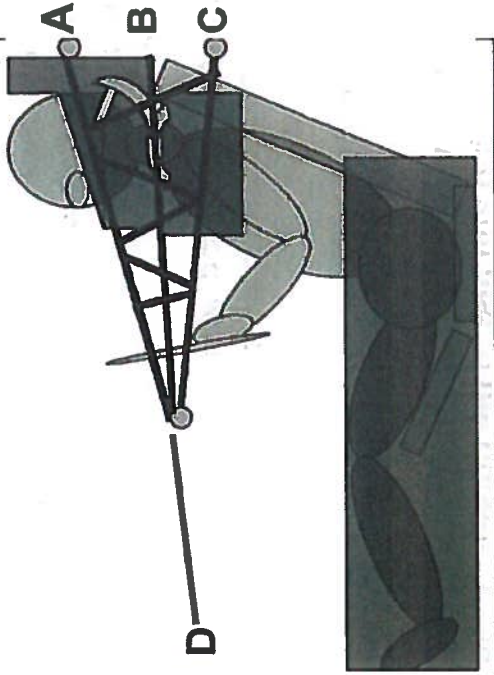


Positioning & Installation of Interior Net



- Strap C – wrap around the back of the seat just below the shoulder belt opening back to the main hoop (“B-pillar”) area. The strap should be tight adding strength to the seat back but not so tight as to put a significant twisting load on the seat
- Strap D – attach to a forward point in the dash area such as:
 - Roll cage horizontal cross tube behind dash (*pass through a vent or radio opening if full dash still exists*)
 - Eye-bolt with backing plate through the fire-wall
 - Suspended “center ring” mounted from tether to top center of cage (top of windshield) to eyebolts on the transmission tunnel
- Use “Ratchet” to tighten net as tight as possible without creating a twisting load on the seat
- In an event of an emergency requiring exit to the passenger side, pull the yellow quick release strap

Schroth Racing products are exclusively imported and distributed by HMS Motorsport, Ltd. 9A Electronics Ave, Danvers, MA 01923

