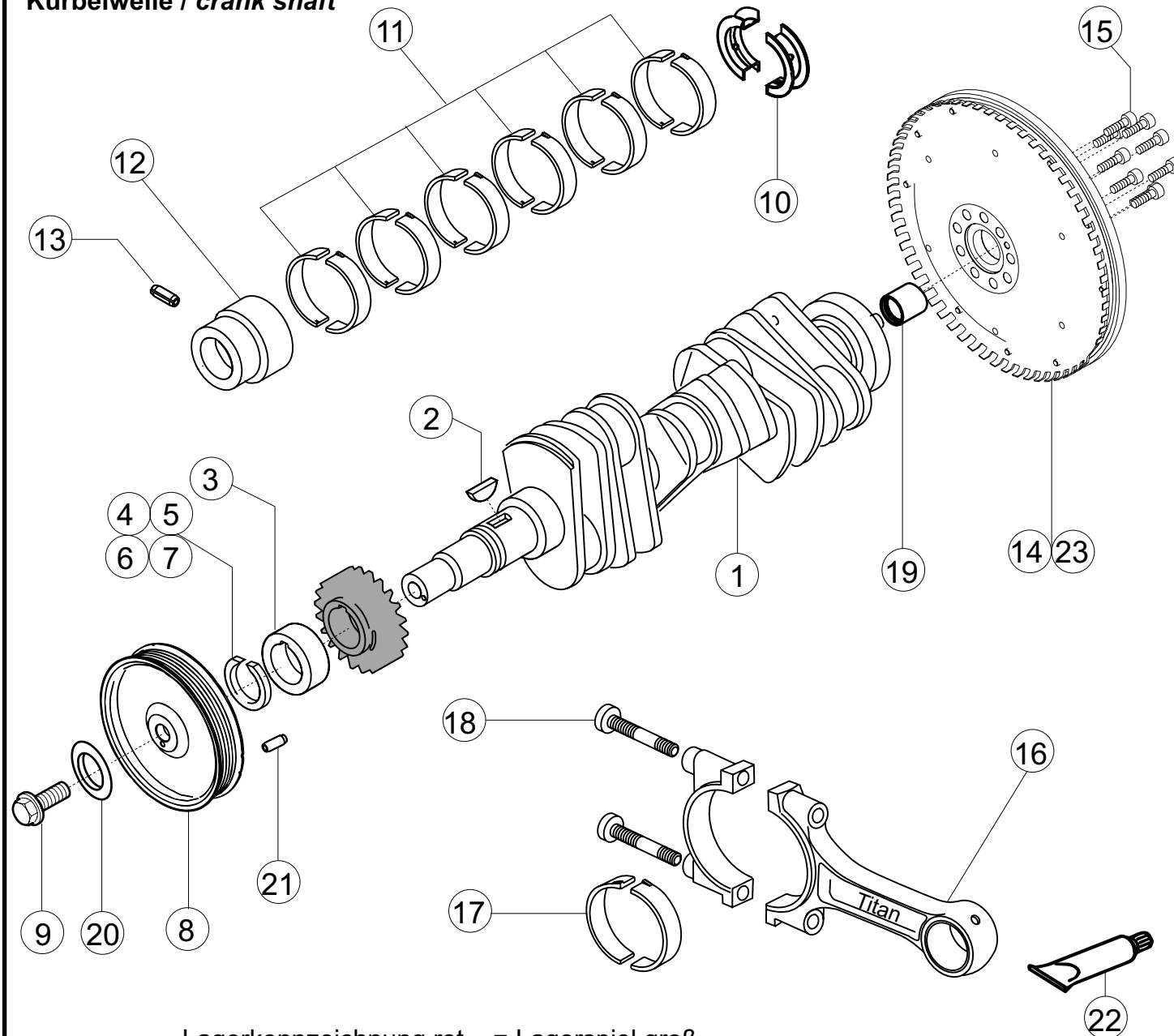


Kurbelwelle / crank shaft



Lagerkennzeichnung rot = Lagerspiel groß
 Lagerkennzeichnung blau = Lagerspiel klein
 red bearing marking = bearing shake wide
 blue bearing marking = bearing shake small

Fett Voltalet 90
 Porsche-Nr. 999.917.726.00

P.	Bezeichnung / Description	St./Pc.	Teile Nr./Part no.
1	Z-Kurbelwelle <i>crankshaft</i>	R 1	996.102.021.92
2	SHB-Feder <i>woodruff key</i>	1	901.102.147.00
3	Zwischenring <i>intermediate ring</i>	1	959.102.321.00
4	Spreng-RG SW 38,6(ww) K2 0 <i>circlip 38,6 index 0</i>	1	901.102.148.00
5	Spreng-RG SW 38,6(ww) K2 1 <i>circlip 38,6 index 1</i>	1	901.102.148.01
6	Spreng-RG SW 38,6(ww) K2 2 <i>circlip 38,6 index 2</i>	1	901.102.148.02
7	Spreng-RG SW 38,6(ww) K2 3 <i>circlip 38,6 index 3</i>	1	901.102.148.03
8	Riemenscheibe <i>belt pulley</i>	R 1	996.102.170.92
9	Durlock-Schraube M14X1,5X40 <i>hex bolt with collar</i>	R 1	993.102.550.80
10	Paßlager rot <i>axial-thrust bearing red</i>	R 2	996.101.231.91
	Paßlager gelb <i>axial-thrust bearing yellow</i>	R 2	996.101.231.92
	Paßlager blau <i>axial-thrust bearing blue</i>	R 2	996.101.231.93
11	Hauptlager rot <i>main bearing red</i>	R 12	996.101.232.91
	Hauptlager gelb <i>main bearing yellow</i>	R 12	996.101.232.92
	Hauptlager blau <i>main bearing blue</i>	R 12	996.101.232.93
12	Lagerbuchse Lager 8 <i>bushing bearing 8</i>	1	964.101.138.01
13	ZYL-STIFT 5H8X10 <i>stud 5H8X10</i>	1	900.012.061.00
14	Z-Schwungrad <i>flywheel</i>	R 1	964.102.239.80
15	Zylinderschraube <i>fillister-head screw</i>	9	928.102.151.01
16	Pleuel komplett ohne Schalen <i>conrod assembly without P.17</i>	R 6	996.103.012.95
17	Pleuellagerschale <i>conrod bearing shell</i>	R 12	996.103.121.90
18	Pleuelschraube <i>connecting-rod bolt</i>	R 12	996.103.176.93
19	Rillenkugellager <i>grooved ball bearing</i>	1	931.102.111.00
20	Scheibe 14,5x30x5,0 <i>washer 14,5x30x5,0</i>	R 1	999.025.174.02
21			
22			
23			