

Transfer Case PL72 ATC

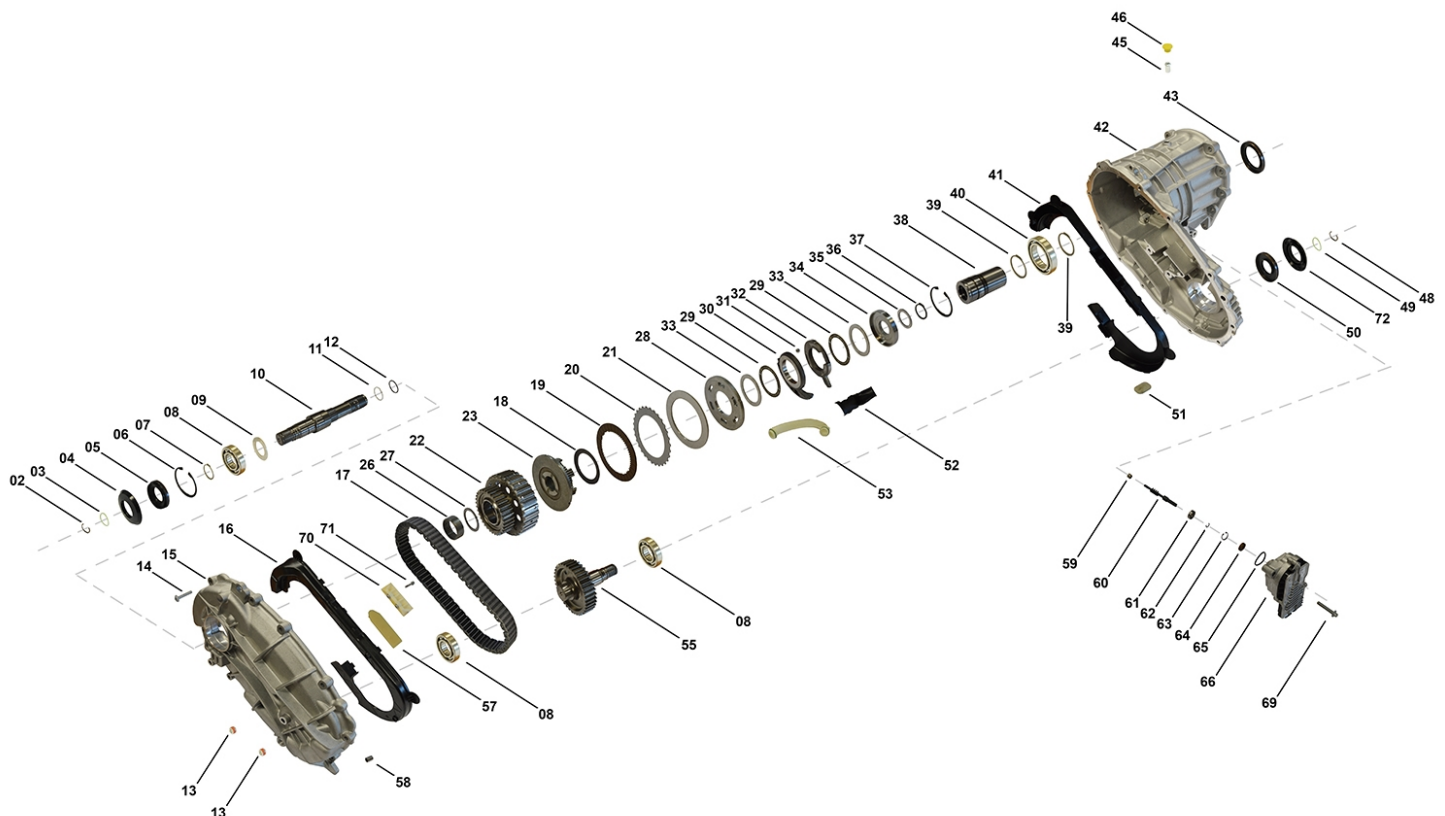
TC00299, TC00300, TC00301, TC00467, TC00504, TC00505, TC00506, TC00507

OEM No: 95834101009; 95834101019; 95834101028; 95834101034; 95834101204; 95834101214; 95834101303; 95834101308

Brands

Brand	Modelseries
Porsche	Cayenne

List of parts



Pos	Part number	OEM no	Quantity	Product name	Info
'ATT	TC00299 & TC00467	95834101009 & 95834101034		Technical Change Information	Attention - Dimension Change: Starting with OE code 95834101008 and 95834101033 the dimension has been changed from 1" to 1,25" for following parts: Housing, Chain, Sprocket ASM, Sprocket Output, Deflector Front, Deflector Rear. For OE codes 95834101001 - 95834101007 and 95834101030 - 95834101032 only parts with dimension 1" can be used.
'I01	TC00299	95834101009		OE References	Sprocket/Chain Dimension 1": 95834101001 (0C2341010Q, 0C2341010M), 95834101002 (0C2341011_, 0C2341011C), 95834101003 (0C2341011F), 95834101004 (0C2341011K), 95834101005 (0C2341011Q), 95834101006 (0C2341012F), 95834101007 (0C2341012K) Sprocket/Chain Dimension 1,25": 95834101008, 95834101009

All rights reserved.
This publication may not be reproduced in any form, in whole or in part, without a written approval from S-TEC Service Technologies GmbH & Co OG.
Subject to change without notice!

Transfer Case PL72 ATC

TC00299, TC00300, TC00301, TC00467, TC00504, TC00505, TC00506, TC00507

OEM No: 95834101009; 95834101019; 95834101028; 95834101034; 95834101204; 95834101214;
95834101303; 95834101308

List of parts

Pos	Part number	OEM no	Quantity	Product name	Info
'I02	TC00300	95834101019		OE References	Sprocket/Chain Dimension 1": 95834101011 (0C2341010R), 95834101012 (0C2341011A), 95834101013 (0C2341011G), 95834101014 (0C2341011L), 95834101015 (0C2341011R), 95834101016 (0C2341012G), 95834101017 (0C2341012L), 95834101018, 95834101019
'I03	TC00301	95834101028		OE References	Sprocket/Chain Dimension 1": 95834101020 (0C2341010S, 0C2341010P), 95834101021 (0C2341011B), 95834101022 (0C2341011H), 95834101023 (0C2341011M), 95834101024 (0C2341011S), 95834101025 (0C2341012H), 95834101026 (0C2341012M), 95834101027, 95834101028
'I04	TC00467	95834101034		OE References	Sprocket/Chain Dimension 1": 95834101030 (0C2341011P, 0C2341011N, 0C2341011T), 95834101031 (0C2341012J), 95834101032 (0C2341012N) Sprocket/Chain Dimension 1,25": 95834101033, 95834101034
'I05	TC00504	95834101204		OE References	Sprocket/Chain Dimension 1,25": 95834101200 (0C2341013M), 95834101201 (0C2341013S), 95834101202 (0C2341041B), 95834101204 (0C2341041J)
'I06	TC00505	95834101303		OE References	Sprocket/Chain Dimension 1": 95834101220 (0C2341013P), 95834101300 (0C2341013R), 95834101301 (0C2341041A), 95834101303 (0C2341041K)
'I07	TC00506	95834101214		OE References	Sprocket/Chain Dimension 1,25": 95834101210 (0C2341013N), 95834101211 (0C2341041), 95834101212 (0C2341041D), 95834101214 (0C2341041M)
'I08	TC00507	95834101308		OE References	Sprocket/Chain Dimension 1": 95834101305 (0C2341013T), 95834101306 (0C2341041C), 95834101308 (0C2341041L)
'K01	SP01660		1 piece	Bearing Kit	Contains position 08, 26, 29, 40, 59, 61
'K02	SP01662		1 piece	Sealing Kit	Contains position 03, 05, 12, 13, 43, 49, 50, 64, 65

All rights reserved.

This publication may not be reproduced in any form, in whole or in part, without a written approval from S-TEC Service Technologies GmbH & Co OG.
Subject to change without notice!

Transfer Case PL72 ATC

TC00299, TC00300, TC00301, TC00467, TC00504, TC00505, TC00506, TC00507

OEM No: 95834101009; 95834101019; 95834101028; 95834101034; 95834101204; 95834101214;
95834101303; 95834101308

List of parts

Pos	Part number	OEM no	Quantity	Product name	Info
'K10	SP01299		1 piece	Sliding Block Kit	Contains position 70, 71 Information for DCS: Used in A2512801300, A2512801400, A2512802700, A2512803100, A2512803200 Information for PL72 T Porsche: Used in 95834102011, 95834102012 Information for PL72 T VW: Used in 0BU341010M, 0BU341011C, 0BU341011K, 0BU341011M
'K11	SP01097		1 piece	Clutch Kit	Contains position 18, 19, 20, 21
'K12	SP01643		1 piece	Shaft Actuator Kit	Contains position 59, 60, 61, 62, 63
'K16	SP02022		1 piece	Main Shaft Kit	Contains position 10, 11
02	SP01988	7P0521202; 95834949300	1 piece	Retaining Ring	
03	SP00562	WHT005158	1 piece	Seal O-Ring	
04	SP00565	0BU409375; 95834137500	1 piece	Slinger	Information for PL72 T VW: Only 1pce used in OE code 0BU341010P, 0BU341011N
05	SP01991	0BU321199; 95834119900	1 piece	Radial Sealing	
06	SP01156		1 piece	Retaining Ring	
07	SP01222		1 piece	Retaining Ring	
08	Only available in K01		3 pieces	Ball Bearing	
09	SP01228		1 piece	Shim	
10	Only available in K16		1 piece	Main Shaft	
11	SP02011		1 piece	Ring	
12	Only available in K02		1 piece	Seal O-Ring	
13	SP01992	0AD301115A; 0BU301125; 6000626087; 673002083; 95530111501; A0029909617	2 pieces	Plug	
14	SP01217		14 pieces	Screw	
15	Not available		1 piece	Housing Rear	
16	Not available		1 piece	Deflector Rear	
17	SP01011		1 piece	Chain (Dimension 1")	Information for PL72 ATC: Used in 95834101001 - 95834101007, Used in 95834101011 - 95834101019, Used in 95834101020 - 95834101028, Used in 95834101030 - 95834101032, Used in 95834101220, Used in 95834101300 - 95834101301, Used in 95834101303, Used in 95834101305 - 95834101306, Used in 95834101308
17	SP02004		1 piece	Chain (Dimension 1,25")	Information for PL72 ATC: Used in 95834101008, 95834101009, 95834101033, 95834101034, 95834101200, 95834101201, 95834101202, 95834101204, 95834101210, 95834101211, 95834101212, 95834101214
18	Only available in K11		5 pieces	Spring Disc	
19	Only available in K11		7 pieces	Friction Plate	
20	Only available in K11		6 pieces	Steel Plate	

All rights reserved.

This publication may not be reproduced in any form, in whole or in part, without a written approval from S-TEC Service Technologies GmbH & Co OG.
Subject to change without notice!

Transfer Case PL72 ATC

TC00299, TC00300, TC00301, TC00467, TC00504, TC00505, TC00506, TC00507

OEM No: 95834101009; 95834101019; 95834101028; 95834101034; 95834101204; 95834101214;
95834101303; 95834101308

List of parts

Pos	Part number	OEM no	Quantity	Product name	Info
21	Only available in K11		1 piece	Plate	
22	SP01409		1 piece	Gear ASM With Drum Clutch (Dimension 1")	Information for PL72 ATC: Used in 95834101001 - 95834101007, Used in 95834101011 - 95834101019, Used in 95834101020 - 95834101028, Used in 95834101030 - 95834101032, Used in 95834101220, Used in 95834101300 - 95834101301, Used in 95834101303, Used in 95834101305 - 95834101306, Used in 95834101308
22	SP02002		1 piece	Gear ASM With Drum Clutch (Dimension 1,25")	Information for PL72 ATC: Used in 95834101008, 95834101009, 95834101033, 95834101034, 95834101200, 95834101201, 95834101202, 95834101204, 95834101210, 95834101211, 95834101212, 95834101214
23	SP01096		1 piece	Hub	
26	SP00136		1 piece	Needle Sleeve	
27	SP01234		2 pieces	Shim Thrust	
28	SP01082		1 piece	Piston	
29	Only available in K01		2 pieces	Bearing Cage and Roller	
30	SP01235		1 piece	Actuator Ring	
31	SP01085		3 pieces	Ball	
32	SP01236		1 piece	Actuator Ring	
33	SP01083		2 pieces	Thrust Washer	
34	SP01084		1 piece	Ring	
35	Not available		1 piece	Shim	
36	SP01213		1 piece	Retaining Ring	
37	SP00317		1 piece	Locking Ring	Information for DCS: Used in A2512801300, A2512801400, A2512802700, A2512802800, A2512803100, A2512803200
38	SP01000		1 piece	Shaft Input	Information for PL72 ATC: Used in 95834101019
38	SP02001		1 piece	Shaft Input	Information for PL72 ATC: Used in 95834101009, 95834101204
38	SP02009		1 piece	Shaft Input	Information for PL72 ATC: Used in 95834101303
38	SP02013		1 piece	Shaft Input	Information for PL72 ATC: Used in 95834101028, 95834101034, 95834101214, 95834101308
39	SP01219		2 pieces	Retaining Ring	
40	Only available in K01		1 piece	Ball Bearing	
41	Not available		1 piece	Deflector Front	
42	Not available		1 piece	Housing Front	
43	SP01990	0BU321199B; 95834119920	1 piece	Radial Seal Ring	
45	SP00634	02H409275A	1 piece	Sleeve	Information for PL72 ATC: Part additionally requires a Vent Pipe. For details please observe manufacturer regulations.
46	Not available		1 piece	Transportation Cap	
48	SP00564	7P0521200A; 95834949110	1 piece	Retaining Ring	
49	SP00561	WHT005156	1 piece	Seal O-Ring	
50	SP01989	0BU321199A; 95834119910	1 piece	Radial Seal Ring	

All rights reserved.

This publication may not be reproduced in any form, in whole or in part, without a written approval from S-TEC Service Technologies GmbH & Co OG.
Subject to change without notice!

Transfer Case PL72 ATC

TC00299, TC00300, TC00301, TC00467, TC00504, TC00505, TC00506, TC00507

OEM No: 95834101009; 95834101019; 95834101028; 95834101034; 95834101204; 95834101214;
95834101303; 95834101308

List of parts

Pos	Part number	OEM no	Quantity	Product name	Info
51	SP01216		1 piece	Magnet	<p>Information for PL72 ATC: Used in 95834101006 - 95834101009, 95834101016 - 95834101019, 95834101025 - 95834101028, 95834101031 - 95834101034, 95834101200, 95834101201, 95834101202, 95834101204, 95834101210, 95834101211, 95834101212, 95834101214, 95834101220, 95834101300, 95834101301, 95834101303, 95834101305, 95834101306, 95834101308</p> <p>Information for PL72 T Audi: Used in 0BU341010N, 0BU341010P, 0BU341010Q</p> <p>Information for PL72 T Porsche: Used in 95834102003, 95834102012, 95834102021</p> <p>Information for PL72 T VW: Used in 0BU341010P, 0BU341011E, 0BU341011F, 0BU341011K, 0BU341011M, 0BU341011N, 0BU341011Q, 0BU341011R, 0BU341011S, 0BU341011T</p>

Transfer Case PL72 ATC

TC00299, TC00300, TC00301, TC00467, TC00504, TC00505, TC00506, TC00507

OEM No: 95834101009; 95834101019; 95834101028; 95834101034; 95834101204; 95834101214;
95834101303; 95834101308

List of parts

Pos	Part number	OEM no	Quantity	Product name	Info
51	SP01998	01Z525615	1 piece	Magnet	<p>Information for HAA350+ Audi: Used in 0AV525010D, 0AV525010E, 0AV525010F, 0AV525010H, 0AV525010K, 0AV525010L, 0AV525010M, 0BR525010, 0BR525010A, 0BR525010B, 0BR525010C, 0BR525010G, 0BR525010H</p> <p>Information for HAA350+ SEAT: Used in 0AV525010D, 0AV525010E, 0AV525010H, 0AV525010K, 0AV525010L, 0BR525010, 0BR525010B, 0BR525010G</p> <p>Information for HAA350+ Skoda: Used in 0AV525010D, 0AV525010H, 0AV525010K, 0BR525010, 0BR525010B, 0BR525010E, 0BR525010G, 0BR525010J</p> <p>Information for HAA350+ VW: Used in 0AV525010D, 0AV525010E, 0AV525010H, 0AV525010K, 0AV525010L, 0BR525010, 0BR525010B, 0BR525010G</p> <p>Information for PL72 ATC: Used in 95834101001 - 95834101005, 95834101011 - 95834101015, 95834101020 - 95834101024, 95834101030</p> <p>Information for PL72 T Audi: Used in 0BU341010N, 0BU341010P, 0BU341010Q</p> <p>Information for PL72 T Porsche: Used in 95834102001, 95834102002, 95834102011, 0BU341010L, 95834102020</p> <p>Information for PL72 T VW: Used in 0BU341010B, 0BU341010C, 0BU341010D, 0BU341010E, 0BU341010F, 0BU341010L, 0BU341010M, 0BU341010P, 0BU341010R, 0BU341010S, 0BU341010T, 0BU341011_, 0BU341011A, 0BU341011C, 0BU341011D, 0BU341011G, 0BU341011H, 0BU341011J, 0BU341011P</p>
52	Not available		1 piece	Deflector ASM	
53	Not available		1 piece	Tube ASM	

Transfer Case PL72 ATC

TC00299, TC00300, TC00301, TC00467, TC00504, TC00505, TC00506, TC00507

OEM No: 95834101009; 95834101019; 95834101028; 95834101034; 95834101204; 95834101214;
95834101303; 95834101308

List of parts

Pos	Part number	OEM no	Quantity	Product name	Info
55	SP01146		1 piece	Sprocket Output (Dimension 1")	Information for PL72 ATC: Used in 95834101001 - 95834101007, Used in 95834101011 - 95834101018, Used in 95834101020 - 95834101027, Used in 95834101030 - 95834101032, Used in 95834101220, Used in 95834101300 - 95834101301, Used in 95834101303, Used in 95834101305 - 95834101306, Used in 95834101308 Information for PL72 T Porsche: Used in 95834102001 - 95834102003, 95834102011, 0BU341010L, 95834102020, 95834102021 Information for PL72 T VW: Used in 0BU341010B, 0BU341010C, 0BU341010D, 0BU341010F, 0BU341010L, 0BU341010M, 0BU341010R, 0BU341010S, 0BU341010T, 0BU341011A, 0BU341011C, 0BU341011G, 0BU341011H, 0BU341011J, 0BU341011N, 0BU341011Q, 0BU341011R, 0BU341011S, 0BU341011T
55	SP02003		1 piece	Sprocket Output (Dimension 1,25")	Information for PL72 ATC: Used in 95834101008, 95834101009, 95834101033, 95834101034, 95834101200, 95834101201, 95834101202, 95834101204, 95834101210, 95834101211, 95834101212, 95834101214
57	Not available		1 piece	Pad	Information for PL72 ATC: Used in 95834101001 - 95834101005, Used in 95834101011 - 95834101015, Used in 95834101020 - 95834101024, Used in 95834101030
57	SP01223		1 piece	Pad	Information for PL72 ATC: Used in 95834101006 - 95834101009, Used in 95834101016 - 95834101019, Used in 95834101025 - 95834101028, Used in 95834101031 - 95834101034, Used in 95834101200 - 95834101202, Used in 95834101204, Used in 95834101210 - 95834101212, Used in 95834101214, Used in 95834101220, Used in 95834101300 - 95834101303, Used in 95834101305 - 95834101306, Used in 95834101308
58	SP00155		2 pieces	Pin	
59	Only available in K01 & K12		1 piece	Needle Bearing	
60	Only available in K12		1 piece	Shaft Actuator	
61	Only available in K01 & K12		1 piece	Ball Bearing	
62	Only available in K12		1 piece	Retaining Ring	
63	Only available in K12		1 piece	Retaining Ring	
64	SP01038	27107593452	1 piece	Radial Seal Ring	
65	SP01040	27107593451; 673002350; 95834150100	1 piece	Seal O-Ring	

All rights reserved.

This publication may not be reproduced in any form, in whole or in part, without a written approval from S-TEC Service Technologies GmbH & Co OG.
Subject to change without notice!

Transfer Case PL72 ATC

TC00299, TC00300, TC00301, TC00467, TC00504, TC00505, TC00506, TC00507

OEM No: 95834101009; 95834101019; 95834101028; 95834101034; 95834101204; 95834101214;
95834101303; 95834101308

List of parts

Pos	Part number	OEM no	Quantity	Product name	Info
66	SP00829	95861875509	1 piece	Actuator Motor CAN	Information for PL72 ATC: Used in 95834101009, 95834101019, 95834101028, 95834101034
66	SP02031	95861875512	1 piece	Actuator Motor CAN	Information for PL72 ATC: Used in 95834101204, 95834101214, 95834101303, 95834101308
69	SP01045	27107593450; 673002351; 90038507101; 95834150200	2 pieces	Screw	
70	Only available in K10		1 piece	Sliding Block	
71	Only available in K10		2 pieces	Screw	
72	SP01561	95834137501	1 piece	Slinger	
	OIL0005	00004330136; 00004330563; 83220397244; 83222409710	1 piece	Transmission Fluid	Shipment in 1 liter bottles. Fillgrade information please see Oil List.
	SP02000		1 piece	Sealant	Sealant SILICON BLACK (1pce = 300ml)

Transfer Case PL72 T

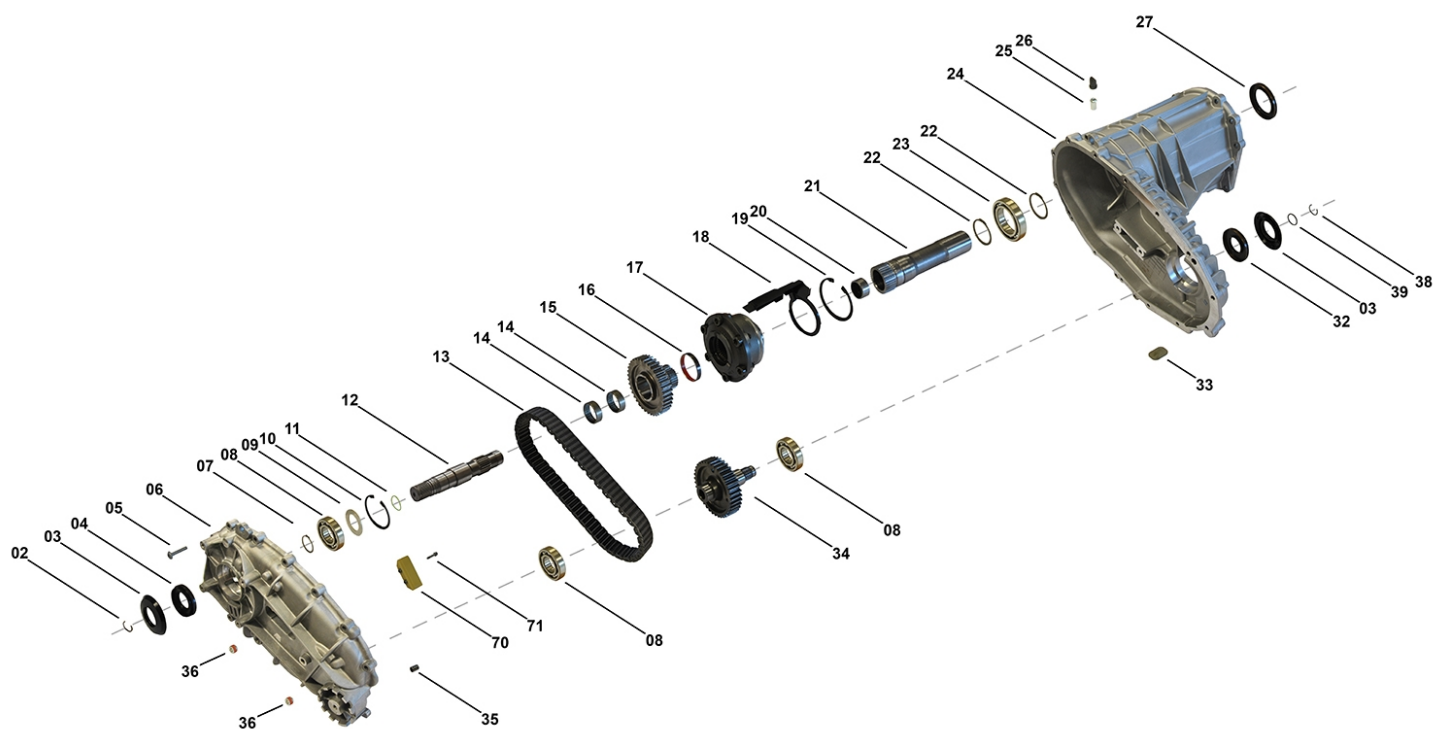
TC00311, TC00319, TC00323

OEM No: 95834102003; 95834102012; 95834102021

Brands

Brand	Modelseries
Porsche	Cayenne

List of parts



Pos	Part number	OEM no	Quantity	Product name	Info
'ATT	TC00311 & TC00323	95834102003; 95834102012		Technical Change Information	Attention - Dimension Change: For OE code 0BU341011D and starting with OE code 95834102012 the dimension has been changed from 1" to 1,25" for following parts: Housing, Chain, Sprocket ASM, Sprocket Output, Deflector Front, Deflector Rear. For OE code 95834102011 only parts with Dimension 1" can be used.
'I01	TC00311	95834102003		OE References	Sprocket/Chain Dimension 1": 95834102001 (0BU341010B, 0BU341010R), 95834102002 (0BU341011G), 95834102003 (0BU341011Q) Sprocket/Chain Dimension 1,25": 0BU341011D
'I02	TC00319	95834102021		OE References	Sprocket/Chain Dimension 1": 0BU341010L, 95834102020 (0BU341011J), 95834102021 (0BU341011T)
'I03	TC00323	95834102012		OE References	Sprocket/Chain Dimension 1": 95834102011 (0BU341010M, 0BU341011C) Sprocket/Chain Dimension 1,25": 95834102012 (0BU341011K, 0BU341011M)
'K01	SP00227		1 piece	Bearing Kit	Contains position 08, 14, 16, 20, 23

All rights reserved.
This publication may not be reproduced in any form, in whole or in part, without a written approval from S-TEC Service Technologies GmbH & Co OG.
Subject to change without notice!

Transfer Case PL72 T

TC00311, TC00319, TC00323

OEM No: 95834102003; 95834102012; 95834102021

List of parts

Pos	Part number	OEM no	Quantity	Product name	Info
'K02	SP00429		1 piece	Sealing Kit	Contains position 04, 11, 27, 32, 36, 39 Information for PL72 T VW: Used in 0BU341011F, 0BU341011M, 0BU341011Q, 0BU341011R, 0BU341011S, 0BU341011T
'K10	SP01299		1 piece	Sliding Block Kit	Contains position 70, 71 Information for DCS: Used in A2512801300, A2512801400, A2512802700, A2512803100, A2512803200 Information for PL72 T Porsche: Used in 95834102011, 95834102012 Information for PL72 T VW: Used in 0BU341010M, 0BU341011C, 0BU341011K, 0BU341011M
'K10	SP02016		1 piece	Sliding Block Kit	Contains position 70, 71 Information for PL72 T Porsche: Used in 95834102003, 95834102021 Information for PL72 T VW: Used in 0BU341011Q, 0BU341011R, 0BU341011S, 0BU341011T
02	SP01988	7P0521202; 95834949300	1 piece	Retaining Ring	
03	SP00565	0BU409375; 95834137500	2 pieces	Slinger	Information for PL72 T VW: Only 1pce used in OE code 0BU341010P, 0BU341011N
04	SP01991	0BU321199; 95834119900	1 piece	Radial Sealing	
05	SP01217		16 pieces	Screw	
06	Not available		1 piece	Housing Rear	
07	SP01222		1 piece	Retaining Ring	
08	Only available in K01		3 pieces	Ball Bearing	
09	SP01228		1 piece	Shim	
10	SP01156		1 piece	Retaining Ring	
11	SP00561	WHT005156	1 piece	Seal O-Ring	
12	SP01849		1 piece	Main Shaft	Information for PL72 T VW: Used in 0BU341010P, 0BU341011F, 0BU341011M, 0BU341011Q, 0BU341011R, 0BU341011S, 0BU341011T
13	SP01839		1 piece	Chain (Dimension 1")	Information for PL72 T Audi: Used in 0BU341010N, 0BU341010Q Information for PL72 T Porsche: Used in 95834102001 - 95834102003, 95834102011, 0BU341010L, 95834102020 - 95834102021 Information for PL72 T VW: Used in 0BU341010B, 0BU341010C, 0BU341010D, 0BU341010F, 0BU341010J, 0BU341010M, 0BU341010R, 0BU341010S, 0BU341010T, 0BU341011A, 0BU341011C, 0BU341011G, 0BU341011H, 0BU341011J, 0BU341011N, 0BU341011Q, 0BU341011R, 0BU341011S, 0BU341011T

All rights reserved.

This publication may not be reproduced in any form, in whole or in part, without a written approval from S-TEC Service Technologies GmbH & Co OG.
Subject to change without notice!

Transfer Case PL72 T

TC00311, TC00319, TC00323

OEM No: 95834102003; 95834102012; 95834102021

List of parts

Pos	Part number	OEM no	Quantity	Product name	Info
13	SP01840		1 piece	Chain (Dimension 1,25")	Information for PL72 T Audi: Used in 0BU341010P Information for PL72 T Porsche: Used in 95834102012, 0BU341011D Information for PL72 T VW: Used in 0BU341010E, 0BU341010P, 0BU341011_, 0BU341011D, 0BU341011E, 0BU341011F, 0BU341011K, 0BU341011M, 0BU341011P
14	Only available in K01		2 pieces	Needle Bearing	
15	SP01850		1 piece	Sprocket (Dimension 1")	Information for PL72 T Audi: Used in 0BU341010N, 0BU341010Q Information for PL72 T Porsche: Used in 95834102001 - 95834102003, 95834102011, 0BU341010L, 95834102020 - 95834102021 Information for PL72 T VW: Used in 0BU341010B, 0BU341010C, 0BU341010D, 0BU341010F, 0BU341010L, 0BU341010M, 0BU341010R, 0BU341010S, 0BU341010T, 0BU341011A, 0BU341011C, 0BU341011G, 0BU341011H, 0BU341011J, 0BU341011N, 0BU341011Q, 0BU341011R, 0BU341011S, 0BU341011T
15	SP01851		1 piece	Sprocket (Dimension 1,25")	Information for PL72 T Audi: Used in 0BU341010P Information for PL72 T Porsche: Used in 95834102012, 0BU341011D Information for PL72 T VW: Used in 0BU341010E, 0BU341010P, 0BU341011_, 0BU341011D, 0BU341011E, 0BU341011F, 0BU341011K, 0BU341011M, 0BU341011P
16	Only available in K01		1 piece	Bearing Bushing	
17	Not available		1 piece	Differential ASM	
18	Not available		1 piece	Deflector	
19	SP00317		1 piece	Locking Ring	Information for DCS: Used in A2512801300, A2512801400, A2512802700, A2512802800, A2512803100, A2512803200
20	Only available in K01		1 piece	Needle Bearing	
21	SP00184		1 piece	Shaft Input	Information for PL72 T Porsche: Used in 95834102012 Information for PL72 T VW: Used in 0BU341011M
21	SP01843		1 piece	Shaft Input	Information for PL72 T Audi: Used in 0BU341010Q Information for PL72 T Porsche: Used in 95834102021 Information for PL72 T VW: Used in 0BU341011T

All rights reserved.

This publication may not be reproduced in any form, in whole or in part, without a written approval from S-TEC Service Technologies GmbH & Co OG.
Subject to change without notice!

Transfer Case PL72 T

TC00311, TC00319, TC00323

OEM No: 95834102003; 95834102012; 95834102021

List of parts

Pos	Part number	OEM no	Quantity	Product name	Info
21	SP01854		1 piece	Shaft Input	Information for PL72 T Audi: Used in OBU341010N Information for PL72 T Porsche: Used in 95834102003 Information for PL72 T VW: Used in OBU341011Q
22	SP01219		2 pieces	Retaining Ring	
23	Only available in K01		1 piece	Ball Bearing	
24	Not available		1 piece	Housing Front	
25	SP00557	01R525095; 95834139500	1 piece	Vent Pipe	
26	SP00556	017525093; 95834139300	1 piece	Vent Cap	
27	SP01990	0BU321199B; 95834119920	1 piece	Radial Seal Ring	
32	SP01989	0BU321199A; 95834119910	1 piece	Radial Seal Ring	
33	SP01216		1 piece	Magnet	Information for PL72 ATC: Used in 95834101006 - 95834101009, 95834101016 - 95834101019, 95834101025 - 95834101028, 95834101031 - 95834101034, 95834101200, 95834101201, 95834101202, 95834101204, 95834101210, 95834101211, 95834101212, 95834101214, 95834101220, 95834101300, 95834101301, 95834101303, 95834101305, 95834101306, 95834101308 Information for PL72 T Audi: Used in OBU341010N, OBU341010P, OBU341010Q Information for PL72 T Porsche: Used in 95834102003, 95834102012, 95834102021 Information for PL72 T VW: Used in OBU341010P, OBU341011E, OBU341011F, OBU341011K, OBU341011M, OBU341011N, OBU341011Q, OBU341011R, OBU341011S, OBU341011T

Transfer Case PL72 T

TC00311, TC00319, TC00323

OEM No: 95834102003; 95834102012; 95834102021

List of parts

Pos	Part number	OEM no	Quantity	Product name	Info
33	SP01998	01Z525615		Magnet	<p>Information for HAA350+ Audi: Used in 0AV525010D, 0AV525010E, 0AV525010F, 0AV525010H, 0AV525010K, 0AV525010L, 0AV525010M, 0BR525010, 0BR525010A, 0BR525010B, 0BR525010C, 0BR525010G, 0BR525010H</p> <p>Information for HAA350+ SEAT: Used in 0AV525010D, 0AV525010E, 0AV525010H, 0AV525010K, 0AV525010L, 0BR525010, 0BR525010B, 0BR525010G</p> <p>Information for HAA350+ Skoda: Used in 0AV525010D, 0AV525010H, 0AV525010K, 0BR525010, 0BR525010B, 0BR525010E, 0BR525010G, 0BR525010J</p> <p>Information for HAA350+ VW: Used in 0AV525010D, 0AV525010E, 0AV525010H, 0AV525010K, 0AV525010L, 0BR525010, 0BR525010B, 0BR525010G</p> <p>Information for PL72 ATC: Used in 95834101001 - 95834101005, 95834101011 - 95834101015, 95834101020 - 95834101024, 95834101030</p> <p>Information for PL72 T Audi: Used in 0BU341010N, 0BU341010P, 0BU341010Q</p> <p>Information for PL72 T Porsche: Used in 95834102001, 95834102002, 95834102011, 0BU341010L, 95834102020</p> <p>Information for PL72 T VW: Used in 0BU341010B, 0BU341010C, 0BU341010D, 0BU341010E, 0BU341010F, 0BU341010L, 0BU341010M, 0BU341010P, 0BU341010R, 0BU341010S, 0BU341010T, 0BU341011_, 0BU341011A, 0BU341011C, 0BU341011D, 0BU341011G, 0BU341011H, 0BU341011J, 0BU341011P</p>
34	SP00715		1 piece	Sprocket Output (Dimension 1,25")	<p>Information for PL72 T Porsche: Sprocket Output Dimension 1,25" Used in 95834102012, 0BU341011D</p> <p>Information for PL72 T VW: Used in 0BU341010E, 0BU341011_, 0BU341011D, 0BU341011E, 0BU341011F, 0BU341011K, 0BU341011M, 0BU341011P</p>

Transfer Case PL72 T

TC00311, TC00319, TC00323

OEM No: 95834102003; 95834102012; 95834102021

List of parts

Pos	Part number	OEM no	Quantity	Product name	Info
34	SP01146		1 piece	Sprocket Output (Dimension 1")	<p>Information for PL72 ATC: Used in 95834101001 - 95834101007, Used in 95834101011 - 95834101018, Used in 95834101020 - 95834101027, Used in 95834101030 - 95834101032, Used in 95834101220, Used in 95834101300 - 95834101301, Used in 95834101303, Used in 95834101305 - 95834101306, Used in 95834101308</p> <p>Information for PL72 T Porsche: Used in 95834102001 - 95834102003, 95834102011, 0BU341010L, 95834102020, 95834102021</p> <p>Information for PL72 T VW: Used in 0BU341010B, 0BU341010C, 0BU341010D, 0BU341010F, 0BU341010L, 0BU341010M, 0BU341010R, 0BU341010S, 0BU341010T, 0BU341011A, 0BU341011C, 0BU341011G, 0BU341011H, 0BU341011J, 0BU341011N, 0BU341011Q, 0BU341011R, 0BU341011S, 0BU341011T</p>
35	SP00155		2 pieces	Pin	
36	SP01992	0AD301115A; 0BU301125; 6000626087; 673002083; 95530111501; A0029909617	2 pieces	Plug	
38	SP00564	7P0521200A; 95834949110	1 piece	Retaining Ring	
39	SP00562	WHT005158	1 piece	Seal O-Ring	
70	Only available in K10		1 piece	Sliding Block	
71	Only available in K10		2 pieces	Screw	
	SP02000		1 piece	Sealant	Sealant SILICON BLACK (1pce = 300ml)