

**Air Conditioning Interior Temperature Sensor**

Vehicle Type: **Cayenne (All)**

Model Year: 2011 - Present

Information: The air conditioner may start off cooling normally and then the air coming out of the vent will get warmer when the passenger compartment has not yet had time to cool down. Also, the ventilated seats may not switch on in this condition.

Parts Info: 000.043.207.44 – Felt Strip, 30mm x 5 Meters (enough for around 25 vehicles), or equivalent.

Concern: When the vent is positioned full left to blow on the driver, it can force air out the left side of the vent, through the holes for the upper and lower left spring clips, into the area of the rear of the temperature sensor. The HVAC system then senses that the interior temperature is much cooler than it actually is, and will cut back the temperature and fan speed, as well as not allow the ventilated seats to be turned on.



Figure 1



Figure 2

Work Procedure: Cover the holes on the left side of the vent (See Figure 2) with a piece of felt tape, leaving a narrow slit for the spring clips.

Using the above 30mm wide adhesive felt tape, cut a piece approximately 20mm in length. (See Figure 3)

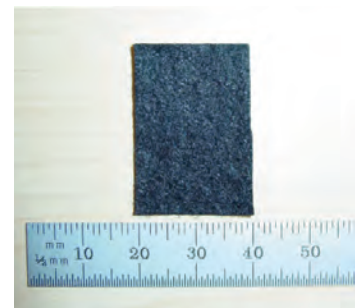


Figure 3

Work Procedure: Adhere the felt tape squarely over the opening in the vent. (See Figure 4 & 5)  
(cont'd)



Figure 4



Figure 5

Using a sharp, thin knife, slit the felt tape just enough to allow the spring clip to push through and move freely. (See Figure 6 & 7)



Figure 6



Figure 7

Reconnect and reinstall vent in vehicle. Verify proper operation of AC System.

Dealership	Service Manager	Shop Foreman	Service Technician				
Distribution							
Routing	Asst. Manager	Warranty Admin.	Service Technician				

Dr. Ing. h.c. F. Porsche AG is the owner of numerous trademarks, both registered and unregistered, including without limitation the Porsche Crest®, Porsche®, Boxster®, Carrera®, Cayenne®, Cayman®, Panamera®, Tiptronic®, VarioCam®, PCM®, 911®, 4S®, FOUR, UNCOMPROMISED.® and the model numbers and the distinctive shapes of the Porsche automobiles such as, the federally registered 911 and Boxster automobiles. The third party trademarks contained herein are the properties of their respective owners. Porsche Cars North America, Inc. believes the specifications to be correct at the time of printing. Specifications, performance standards, standard equipment, options, and other elements shown are subject to change without notice. Some options may be unavailable when a car is built. Some vehicles may be shown with non-U.S. equipment. Please ask your dealer for advice concerning the current availability of options and verify the optional equipment that you ordered. Porsche recommends seat belt usage and observance of traffic laws at all times. Printed in the USA