

2008 Porsche Cayenne Turbo (9PA) V8-4.8L Turbo
Vehicle > Technical Service Bulletins

ENGINE - CRANKCASE/PISTON/PISTON RING REPLACEMENT INFO.

Service

1

25/13 ENU 1010

Jun 20, 2014

The present document was valid at the time of print. A later version may be available online

Crankcase/Pistons/Piston Rings Need To Be Replaced - Mixed Installation Is Not Approved (25/13)

Model year:
as of 2008

Revision:

This bulletin replaces bulletin Group 1, # 25/13, dated June 11, 2013. Section "Information - Spare Parts Requirements" for pistons and piston rings: Text changed to "now available again".

Vehicle Type:
Cayenne S (9PA)/Cayenne Turbo (9PA)/Cayenne Turbo S (9PA)

Cayenne S (92A)/Cayenne Turbo (92A)

Panamera/Panamera S/Panamera Turbo/Panamera Turbo S

Concerns:
Cylinder liner in crankcase

Information:
If piston rings/pistons or the crankcase need to be replaced, a mixed installation can damage the cylinder liner.

NOTICE

Combination of piston rings and crankcase.

^ Risk of damage to cylinder liner.

-->Observe specifications for permissible combinations.

Due to

^ modified production methods during the manufacture of the crankcase --> from smooth honing to structural honing

^ and the use of a different coating on the piston rings (now DLC-coated)

only the combinations specified below are permitted.

A) Cylinder liners are smooth-honed (→ Figure 1 , old - crankcase no longer available)

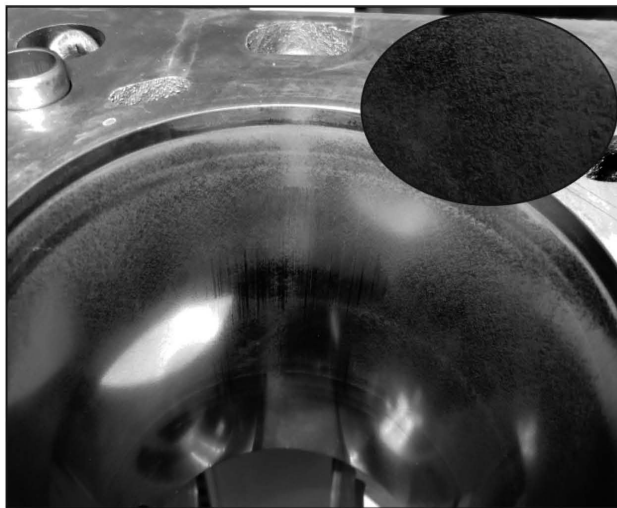


Figure 1

• **Spare parts requirements:** One or more pistons and piston rings (old type without DLC coating - **now available again**)

⇒ All pistons with piston rings can be replace as needed.

• **Spare parts requirements:** Crankcase (old type, smooth-honed - no longer available)

⇒ All pistons with piston rings and the crankcase must be replaced with new components.

B) Cylinder liners are structurally honed (→ Figure 2 , new type)

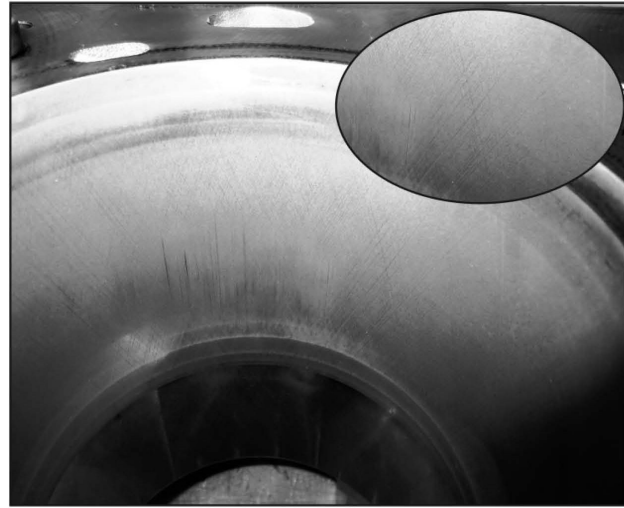


Figure 2

• **Spare parts requirements:** One or more pistons and piston rings
 ⇒ Only replace the required piston(s).

• **Spare parts requirements:** Crankcase
 ⇒ Only replace the crankcase.

-->Before carrying out any other work, check whether the cylinder liners are smooth-honed or structurally honed:

Date of Introduction:

Vehicle type:	Engine type:	Engine number
Panamera	M4620	VC08746
Panamera 4	M4640	VC08729
Panamera S	M4820	C02097
Panamera 4S	M4840	C03992
Panamera Turbo Panamera Turbo S	M4870	C03303
Panamera GTS	M4840G	D01925
Cayenne S	M4802	C12137
Cayenne Turbo	M4852	C05372

Only engines with structurally honed cylinder liners are used in vehicles as of the shown engine numbers:

References:

-->101055 Replacing crankcase

-->131020 Removing and installing pistons

-->131037 Disassembling and assembling pistons

92AAH1, 92AAI1, 92AAL1, 970110, 970111, 970120, 970121, 970410, 970411, 970420, 970421, 970430, 970431, 970440, 970441, 970450, 970451, 9PAAH1, 9PAAH7, 9PAAI1, 9PAAL1, 9PAAL7, 9PAAN1, 9PAAS1

Model year as of 2008

C02, C36

Important Notice: Porsche Cars N.A Technical Bulletins are intended for use by professional technicians, not a "Do-it-yourselfer." They are written to inform these technicians of conditions that may occur on some vehicles, or to provide information that could assist in the proper service of a vehicle. Special tools may be required to perform certain operations identified in these bulletins. Use of tools and procedures other than those recommended in these bulletins may be detrimental to the safe operation of your vehicle. Properly trained technicians have the equipment, tools, safety instructions and know-how to do a job properly and safely. If a condition is described, do not assume that the bulletin applies to your vehicle, or that your vehicle will have that condition. See your Porsche Dealer for information on whether your vehicle may benefit from the information. Part numbers listed in these bulletins are for reference only. Always check with your authorized Porsche dealer to verify correct part numbers.

Disclaimer