

A

B

C

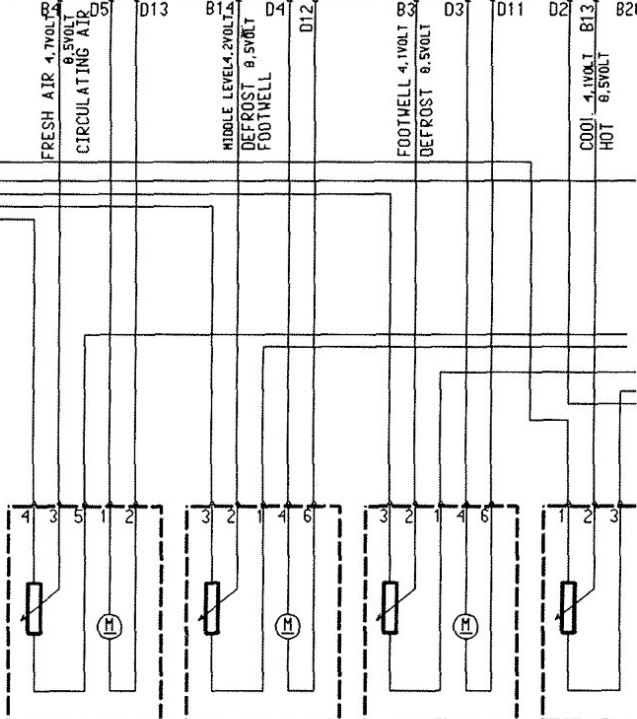
D

E

PLUG B = RED  
 PLUG D = BLACK (LARGE)

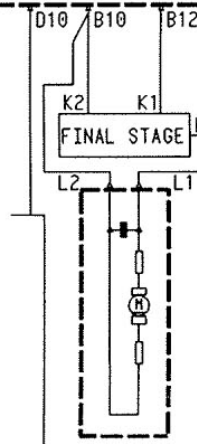
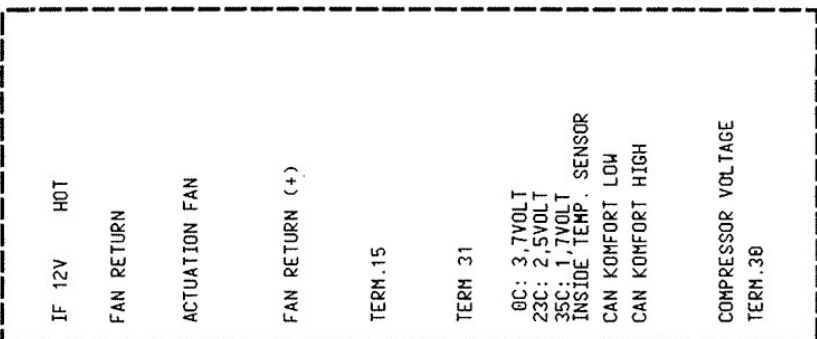
OUTSIDE SENSOR  
 IN AIR INLET  
 CA: 1.2K BEI 23C

OUTPUT SENSOR FOOTWELL  
 CA: 2.8K BEI 23C

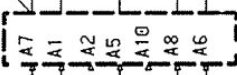


OUTSIDE AIR      CENTRAL FLAP RECIRCULATION VALVE      FOOTWELL / DEFROST FLAP      TEMPERATURE FLAP

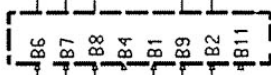
BLACK	SW	BK
BROWN	BR	BN
RED	RT	RD
ORANGE	OR	OG
YELLOW	GE	YE
GREEN	GN	GN
BLUE	BL	BU
VIOLET	VI	VT
GREY	GR	GY
WHITE	WS	WH
PINK	RS	PK
GOLD	—	GD
TUERKIS	TK	TQ
STILREP	—	SP



PLUG X  
10 PINS



PLUG Y  
12 PINS



CP 9 GP 4 17/C6 4,0 BN

FUSE E7 16/E11 0,5 BK/BU

CP 9 GP 4 17/C6 2,5 BN

PCM 15/E6 0,35 BK

RADIO 13/E3 0,35 BK

CLUSTER 2/D12 0,35 BK

CLUSTER 2/D12 0,35 YE

RADIO 13/E3 0,35 YE

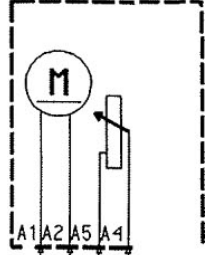
PCM 15/E6 0,35 YE

CP 90 12/E12 0,35 OG/BU

BS 9/2 SI B1 16/E7 0,35 RD/BK

CP 9 GP 4 17/C6

INSIDE TEMPERATURE  
SENSOR BLOWER



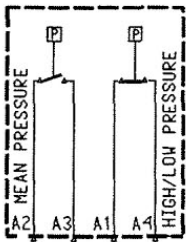
0,35 BN  
0,35 BK/GY  
0,35 BU/BK  
0,35 BN

VS 65

VS 46

VS 47

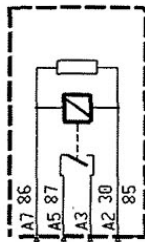
COOLING WATER SWITCH



0.35 BN  
0.35 YE/BU  
1.0 VT/YE  
1.0 BK/GY

CP 9 GP 4 17/C6  
CU ME 12/E8

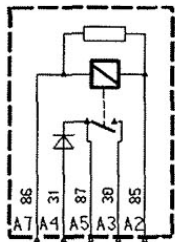
RELAY HEATER



0.35 BK/YE  
2.5 BK/GY  
2.5 RD/GY  
0.35 BN

CP 122 FUSE CT 16/E7  
FUSE DS 16/E9  
RELAY TERM.XE 16/E3

REL. AIR CONDITIONING COMPRESSOR



0.35 RD/BU  
0.35 BN  
0.35 GN/YE  
1.0 GN/YE  
1.0 VT/YE  
0.35 HH/GN

CP 26 12/E5  
BS 22 GP 8 17/D13  
CU ME 12/E7

AIR CONDITIONING COMPRESSOR



1.0 GN/YE

WL MOTOR

23 X59/1

WL REAR

3 X2/5

4 X2/5