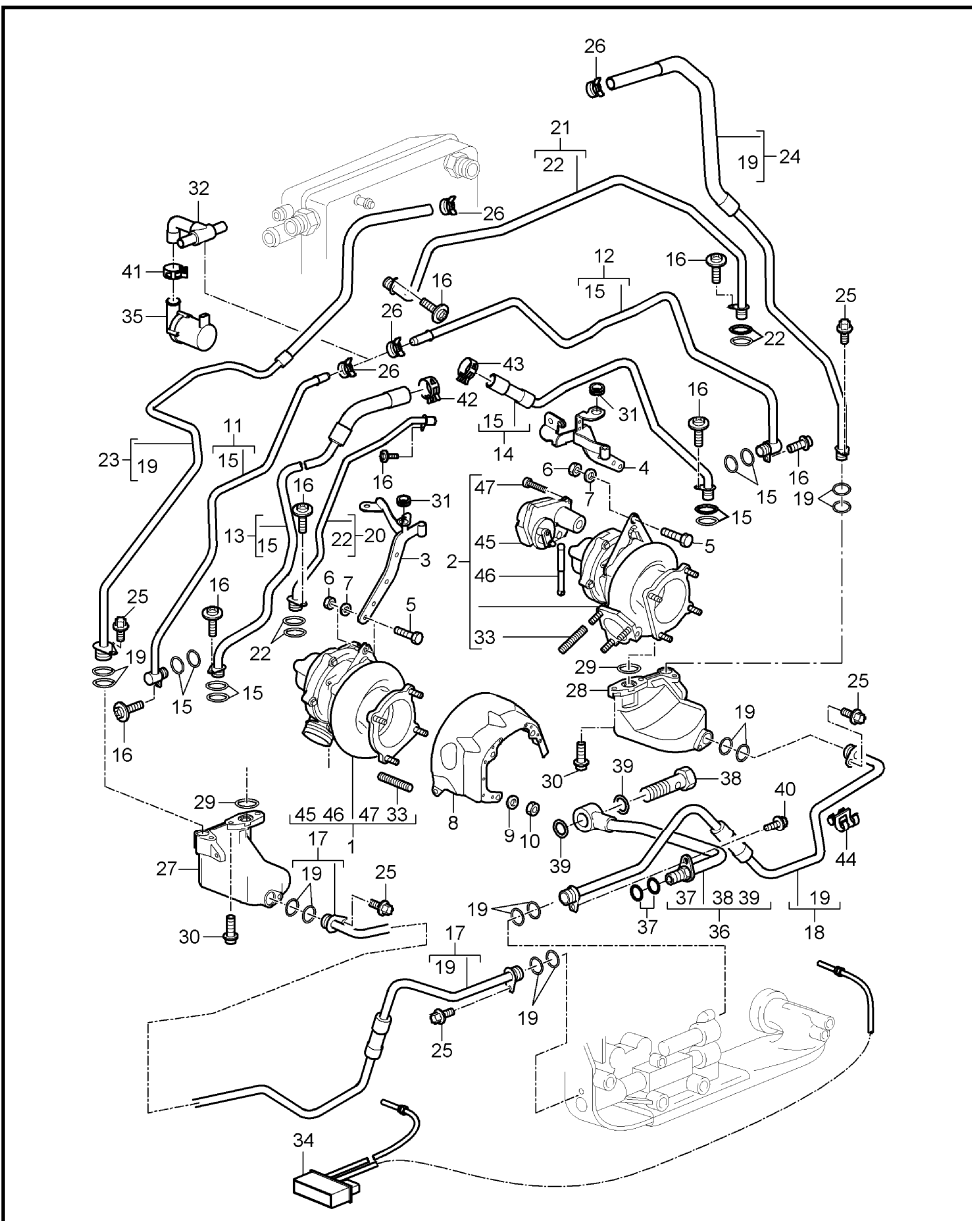


Model	Year	MG	SG	Illustration	Restrictions	UPD	9:32	19.07.2015	PORSCHE	PET	PORSCHE
997T	2008	2	02	202-05		289					



Pos	Part Number	Description	Remark	Qty	Model
		turbocharger with heat protection and oil pipe water line			M97.70
1	U 997 123 013 72	turbocharger cyl. 1 - 3		1	
(1)	A 997 123 013 73	turbocharger cyl. 1 - 3		1	
(1)	A 997 123 013 74	turbocharger cyl. 1 - 3		1	
(1)	A 997 123 013 75	turbocharger cyl. 1 - 3	-08	1	
(1)	A 997 123 013 X	turbocharger cyl. 1 - 3	-08	1	
(1)	> 997 123 013 76	turbocharger cyl. 1 - 3	-09	1	
(1)	997 123 013 AX	turbocharger cyl. 1 - 3	-09	1	
(1)	A 997 123 077 71	turbocharger cyl. 1 - 3	08	1	I101
(1)	A 997 123 077 72	turbocharger cyl. 1 - 3	-09	1	I101
(1)	A 997 123 077 X	turbocharger cyl. 1 - 3	-09	1	I101
(1)	> 997 123 077 73	turbocharger cyl. 1 - 3	-09	1	I101
(1)	997 123 077 AX	turbocharger cyl. 1 - 3	-09	1	I101
2	U 997 123 014 72	turbocharger cyl. 4 - 6		1	
(2)	A 997 123 014 73	turbocharger cyl. 4 - 6		1	
(2)	A 997 123 014 74	turbocharger cyl. 4 - 6		1	
(2)	A 997 123 014 75	turbocharger cyl. 4 - 6	-08	1	
(2)	A 997 123 014 X	turbocharger cyl. 4 - 6	-08	1	
(2)	> 997 123 014 76	turbocharger cyl. 4 - 6	-09	1	
(2)	997 123 014 AX	turbocharger cyl. 4 - 6	-09	1	

Model	Year	MG	SG	Illustration	Restrictions	UPD	9:32	19.07.2015	PORSCHE	PET	PORSCHE
997T	2008	2	02	202-05		289					

Pos	Part Number	Description	Remark	Qty	Model	Pos	Part Number	Description	Remark	Qty	Model
(2)	A 997 123 078 71	turbocharger cyl. 4 - 6	08	1	I101	16	999 073 236 0A	oval-head screw M 6 X 10		8	
(2)	A 997 123 078 72	turbocharger cyl. 4 - 6	-09	1	I101	17	997 107 329 70	intake pipe cyl. 1 - 3		1	
(2)	A 997 123 078 X	turbocharger cyl. 4 - 6 we take back:	-09	1	I101	18	997 107 328 70	intake pipe cyl. 4 - 6		1	
(2)	> 997 123 078 73	turbocharger cyl. 4 - 6	-09	1	I101	19	999 701 789 40	o-ring 12,0 X 2,0		8	
(2)	997 123 078 AX	turbocharger cyl. 4 - 6	-09	1	I101	20	997 107 219 76	pressure line cyl. 1 - 3		1	
3	997 111 213 76	bracket cyl. 1 - 3		1		21	997 107 220 75	pressure line cyl. 4 - 6		1	
4	997 111 214 77	bracket cyl. 4 - 6		1		22	999 707 614 40	o-ring 9,25 X 1,78		6	
5	900 378 074 09	hexagon-head bolt M 8 x 18		2		23	997 107 239 76	vent line cyl. 1 - 3		1	
6	999 084 052 02	lock nut M 8		2		24	997 107 240 74	vent line cyl. 4 - 6		1	
7	900 336 005 00	washer 8.4		2		25	900 385 041 01	torx screw BM 6 X 12		5	
8	997 123 215 71	heat shield cyl. 1 - 3	07	1		26	999 512 686 09	hose clamp		4	
8	997 123 215 72	heat shield cyl. 1 - 3	08-	1		27	997 107 327 72	oil collection container cyl. 1 - 3		1	
(8)	997 123 216 71	heat shield cyl. 4 - 6	07	1		28	997 107 326 72	oil collection container cyl. 4 - 6		1	
(8)	997 123 216 72	heat shield cyl. 4 - 6	08-	1		29	999 707 387 40	o-ring 15,00 X 2,5		2	
9	900 031 032 02	washer		8		30	900 385 019 01	torx screw M 6 X 20		4	
10	999 084 052 02	lock nut		8		31	999 702 246 40	grommet		2	
11	997 106 073 75	water line supply cyl. 1 - 3		1		32	997 106 649 74	t-piece water line supply turbocharger		1	
12	997 106 074 74	water line supply cyl. 4 - 6		1		33	900 081 059 00	stud M 8 X 22		14	
13	997 106 075 74	water line return line cyl. 1 - 3		1		34	A 997 606 250 01	sensor exhaust gas		1	
14	997 106 076 73	water line return line cyl. 4 - 6		1		(34)	997 606 250 03	sensor exhaust gas		1	
15	999 707 583 40	o-ring 12,0 X 2,0		8		35	997 620 251 01	water pump turbocharger		1	

Model	Year	MG	SG	Illustration	Restrictions	UPD	9:32	19.07.2015	PORSCHE	PET	PORSCHE
997T	2008	2	02	202-05		289					

Pos	Part Number	Description	Remark	Qty	Model	Pos	Part Number	Description	Remark	Qty	Model
--	997 106 201 71	support ring water pump turbocharger		1							
--	997 106 211 72	support water pump turbocharger		1							
--	900 385 009 01	torx screw BM 6 X 16		1							
36	997 107 216 70	return line		1							
37	999 701 789 40	o-ring 12 X 2		2							
38	900 175 022 09	banjo bolt M 16 X 1,5 X 36		1							
39	900 123 152 30	sealing ring A16 X 22		2							
40	900 385 009 01	torx screw BM 6 X 16		1							
41	999 512 658 09	hose clamp B 27 X 12		1							
42	999 512 652 09	hose clamp B 19 X 12		1							
43	999 512 655 09	hose clamp B 22 X 12		1							
44	999 651 122 01	cable clamp 7 - 1		2							
(45) A	997 605 315 02	adjusting motor cyl. 1 - 3		1							
(45)	997 605 315 03	adjusting motor cyl. 1 - 3		1							
45 A	997 605 316 02	adjusting motor cyl. 4 - 6		1							
45	997 605 316 03	adjusting motor cyl. 4 - 6		1							
(46)	997 123 123 70	operating rod cyl. 1 - 3		1							
46	997 123 124 70	operating rod cyl. 4 - 6		1							
47	000 043 207 53	pan-head screw M6 X 25,6 -8.8		3							