

The present document was valid at the time of print. A later version may be available online

WM 103019 Removing and installing engine carrier

Technical values

Location	Description	Type	Basic value	Tolerance 1	Tolerance 2
Engine carrier to crankcase	External Torx screw, M10	Tightening torque	65 Nm (48 ftlb.)		
Engine carrier to engine mounting	Collar nut, M12	Tightening torque	85 Nm (63 ftlb.)		

Preliminary work



Caution

Hot components

• Risk of burns

- Let hot components cool down.
- Wear personal protective gear.

1. Remove air cleaner housing → *24251900 Removing and installing air cleaner housing.*

1 Unclip oxygen sensor cable on engine carrier. Also unclip cable for exhaust emissions temperature sensor on turbo vehicles.

2 Remove rear silencer → *263319 Removing and installing rear silencer.*

Removing engine carrier

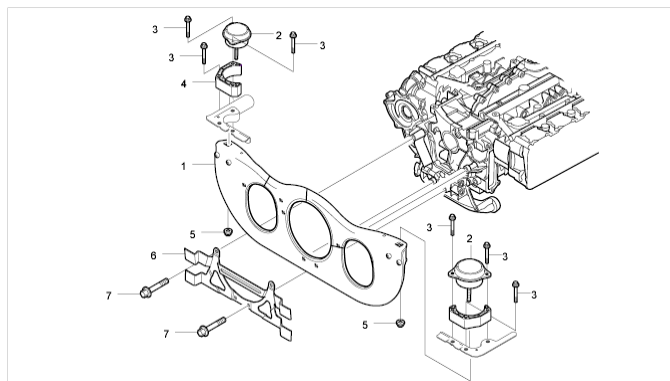


WARNING

Objects or loads falling down

• Risk of squashing or crushing

→ Secure components to prevent them from falling down. Component overview



Overview of engine carrier

Item	Designation	Explanation
1	Engine carrier	Clean and check for damage following removal.
2	Engine mounting (hydraulic mount)	Check for oil loss and damage.
3	Fastening screw, M8 x 60	Tightening torque: 23 Nm (17 ftlb.)
4	Adapter	
5	Collar nut, M12	Tightening torque: 85 Nm (63 ftlb.)
6	Holder for rear silencer	
7	External Torx screw, M10 x 70	Tightening torque: 65 Nm (48 ftlb.)

1. Support engine with a transmission support.
2. Loosen and unscrew four M10 Torx screws. Remove holder for rear silencer.
3. Loosen and screw off M12 collar nuts on the left and right engine mountings.
4. Carefully lower the engine and remove the engine carrier from the threaded bolts on the engine mountings.
5. Clean carrier carefully with solvent naphtha and check for damage and cracks.
6. Replace engine carrier if components are damaged.

Installing engine carrier

Installing engine carrier



Objects or loads falling down

- Risk of squashing or crushing

- Secure components to prevent them from falling down.
- 1. Guide engine carrier into the threaded bolts on the engine mounting. Fit carrier and holder for rear silencer using four Torx screws (M10 x 70).
- 2. Raise engine to installation position using a transmission jack and screw in two M12 collar nuts on the engine mounting.
- 3. Tighten four M10 Torx screws. → **Tightening torque: 65 Nm (48 ftlb.)**
- 4. Tighten M12 collar nuts on the left and right engine mountings. → **Tightening torque: 85 Nm (63 ftlb.)**

Subsequent work

Subsequent work

- 1. Install rear silencer → *263319 Removing and installing rear silencer.*
- 2. Clip in oxygen sensor cable on engine carrier. Also clip in cable for exhaust emissions temperature sensor on turbo vehicles.
- 3. Install air cleaner housing → *24251900 Removing and installing air cleaner housing.*

997420, 997421, 997450, 997451, 997630, 997631, 997650, 997651, 997810, 997811, 997840, 997841, 997850, 997851

Model year as of 2007, Model year up to 2009

C00, C02, C05, C07, C08, C09, C10, C11, C12, C13, C14, C15, C16, C18, C19, C20, C21, C22, C23, C24, C25, C26, C27, C28, C32, C33, C34, C35, C36, C37, C38, C39, C45, C46, C98, C99