

The present document was valid at the time of print. A later version may be available online

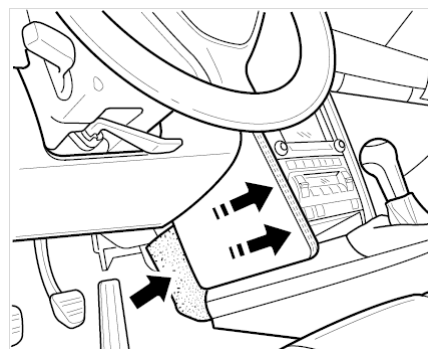
WM 300519 Removing and installing the clutch pedal

Technical values

Location	Description	Type	Basic value	Tolerance 1	Tolerance 2
Master cylinder		Tightening torque	7.5 ftlb.		
Pedal bearing axle		Tightening torque	6 ftlb.	+1.5 ftlb.	
Pedal bearing axle: right lock nut (M8)		Tightening torque	7.5 ftlb.		
Pedal bearing axle: left lock nut (M14)		Tightening torque	34 ftlb.		
Bracket for clutch boost spring		Tightening torque	7.5 ftlb.		

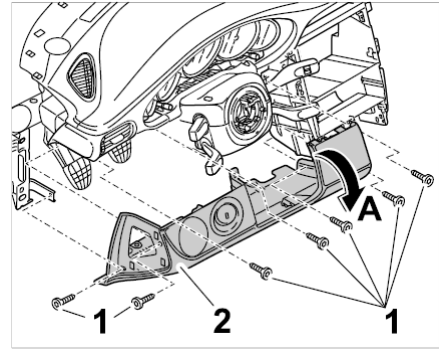
Preliminary work

1. Removing trim panel (lower part of dashboard). To do this, remove the centre console covers → *Side trim panels, left footwell (centre console)* 681419 *Removing and installing centre console cover*.



Side trim panels, left footwell (centre console)

2. Unscrew the fastening screws **-1-** and swivel the trim panel under the dashboard on the driver's side **-2-** downwards **-arrow A-** → 701919 *Removing and installing trim under instrument panel*.



Removing trim panel (lower part of dashboard)

General warning notes



Preloaded or pressurised components

- Risk of squashing or bruising
- Do not reach into the danger area.
- Relieve the tension on components before starting work.
- Secure components to prevent them from loosening suddenly.



Information

Secure the clutch power spring with a cotter pin before starting disassembly work in the clutch pedal area.

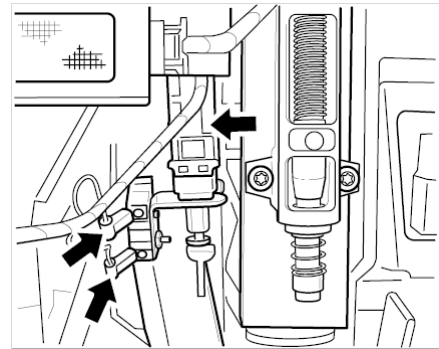
Technical values

Location	Description	Type	Basic value	Tolerance 1	Tolerance 2
Master cylinder		Tightening torque	7.5 ftlb.		
Pedal bearing axle		Tightening torque	6 ftlb.	+1.5 ftlb.	
Pedal bearing axle: right lock nut (M8)		Tightening torque	7.5 ftlb.		
Pedal bearing axle: left lock nut (M14)		Tightening torque	34 ftlb.		
Bracket for clutch boost spring		Tightening torque	7.5 ftlb.		

Removing

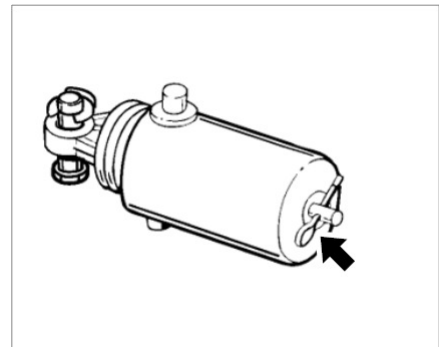
1. Remove the cover and side trim panel for the fuse box in the left driver's footwell.

2. Carefully pull off the connector from the clutch pedal switch (and interlock switch if necessary) **-arrows-** .



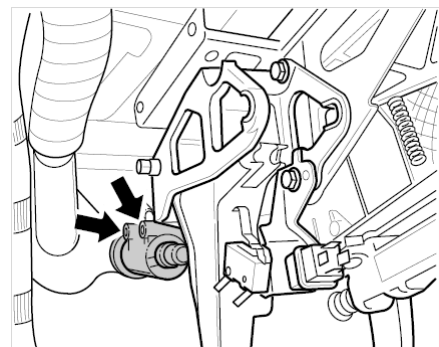
Clutch pedal switch

3. Remove the relay carrier, vehicle electrical system control unit, and device support on the left above the clutch pedal.
4. Secure the clutch power spring with a cotter pin **-arrow-** . Press the clutch pedal lightly, then unclip and remove the clutch power spring.



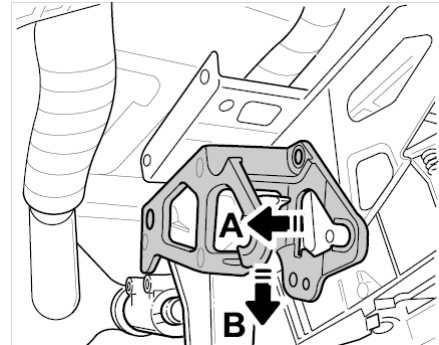
Securing clutch power spring with a cotter pin

5. Loosen the clutch master cylinder **-arrows-** (do not open the clutch system!) and remove the pin (master cylinder valve pushrod).



Clutch master cylinder

6. Loosen bracket for clutch power spring (support for clutch pedal switch and remove interlock switch, if necessary) → *Bracket for clutch power spring* . Carefully move bracket for clutch power spring approximately 2–4 mm to the left **-A-** . Carefully turn bracket for clutch power spring clockwise on the pedal bearing axle approximately 10–15 degrees **-B-** .



Bracket for clutch power spring



Information

When removing the bracket for the clutch power spring, carefully guide the master cylinder valve pushrod past at the clutch pedal.

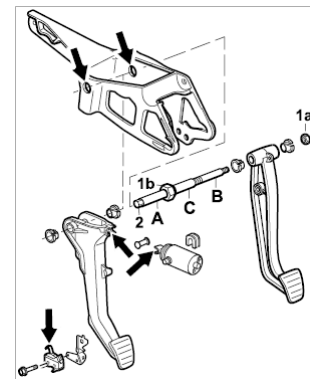
7. Pull out bracket for clutch power spring to the left and take out the clutch pedal.

Installing



Information

Grease bracket in area of pedal bearing axle **-arrows-** with Renocal (Glissando VW 745). Part No. 000.043.206.21 (10g tube).



Advanced grease specification

Important: By contrast with previous models, do not grease the pedal bearing axle in the area of the clutch pedal **-A-** (due to plastic-coated bearing sleeves).

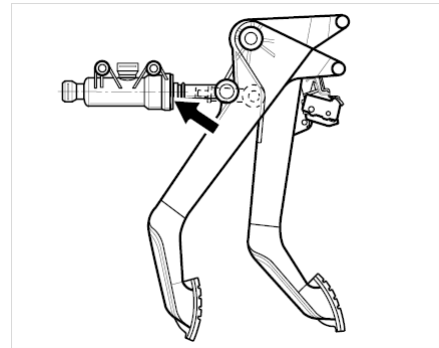
Also grease the following contact surfaces with Renocal (Glissando VW 745) (Part No. 000.043.206.21): The clutch pedal switch (interlock switch) system **-arrow-** . In addition, the contact surface between the clutch pedal (inside of prongs) **-arrow-** and the guiding rods of the clutch power spring **-arrow-** .

Check bearings on the clutch power spring/clutch pedal (bushes, bearing shells) and the connection pieces for signs of wear. Replace any parts that are worn. Use new lock for pin.

Observe correct tightening torques.

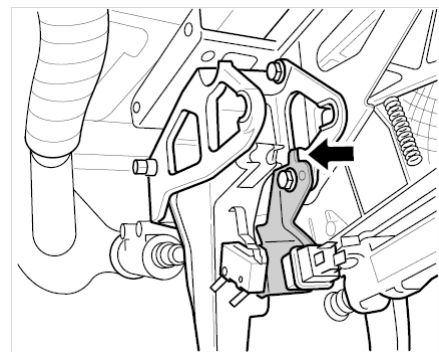
When installing the bracket for clutch power spring, insert the valve pushrod for the master cylinder carefully into the specified position in the clutch pedal.

If creaking noises (over approx. 2/3 of the lift area) are heard after installing the clutch pedal, these may be coming from the connection between the ball head piston rod and piston seat of the clutch master cylinder **-arrow-**. In this case, spray a minimal amount of multipurpose oil on the connection point using a metering tube **-arrow-**. Important: The lubricant must only be applied to this connection point so make sure not to use too much. This connection point cannot be taken apart without damaging it irreparably.



Clutch master cylinder (push rod)

1. Check bearings on the clutch power spring/clutch pedal (bushes, bearing shells) and the connection pieces for signs of wear. Replace any parts that are worn.
2. Insert bracket for clutch power spring with clutch pedal.
3. Position support for clutch pedal switch (and interlock switch, if necessary) in the correct position. Observe the auxiliary bar! **-arrow-** The auxiliary bar must be fitted in the correct position in the groove.



Clutch pedal switch support

4. Install the clutch power spring. Observe the installation position of the bolt for the clutch power spring (hexagon!). Remove the cotter pin after installing the clutch power spring.



Information

Insert pin. Screw in the fastening screws slightly so that the master cylinder can still be moved. Have the clutch pedal not actuated at the limit stop. Press the clutch master cylinder in the direction of travel and tighten (make sure the return bore in the clutch master cylinder is not blocked!).

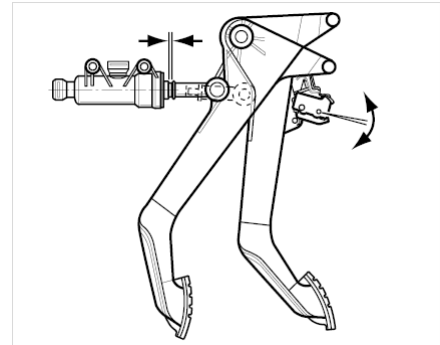
5. Fit the clutch master cylinder.



Information

If the clutch pedal switch adjustment (interlock switch) has been changed, the adjustment must be checked or adjusted. The switch must switch when the clutch pedal is actuated approx. 1-2 mm before the limit stop of the clutch master cylinder.

6. Check adjustment for clutch pedal switch (and interlock switch, if necessary). → *Adjustment for clutch pedal switch (interlock switch)* Plug in connector.

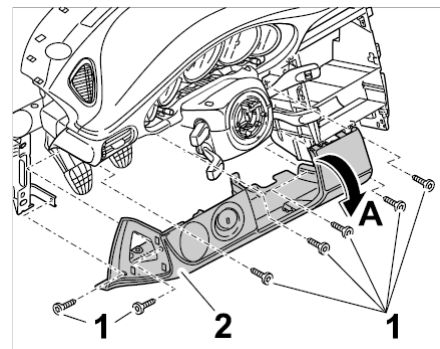


Adjustment for clutch pedal switch (interlock switch)

7. Install device support, vehicle electrical system control unit and relay carrier.
8. Install the side trim panel for the fuse box and cover in the left driver's footwell.

Subsequent work

1. Screw in the fastening screws **-1-** and swivel the trim panel under the dashboard on the driver's side **-2-** upwards **-arrow A-** → *701919 Removing and installing trim under instrument panel.*



Installing trim panel (lower part of dashboard)

2. Install covers for centre console → *681419 Removing and installing centre console cover.*

997320, 997321, 997350, 997351, 997360, 997361, 997370, 997410, 997411, 997420, 997421, 997430, 997431, 997450, 997451, 997460, 997461, 997510, 997511, 997520, 997521, 997560, 997561, 997610, 997611, 997620, 997621, 997630, 997631, 997650, 997651, 997660, 997661, 997720, 997721, 997810, 997811, 997840, 997841, 997850, 997851, 997860, 997861

Model year as of 2005

C00, C02, C05, C06, C07, C08, C09, C10, C11, C12, C13, C14, C15, C16, C17, C18, C19, C20, C21, C22, C23, C24, C25, C26, C27, C28, C32, C33, C34, C35, C36, C37, C38, C39, C41, C45, C45, C46, C96, C97, C98, C99