

PTEN

Professional Tool & Equipment News
The Independent Tool Authority

A comparative list of functions and features for a large selection of aftermarket scan tools from 26 equipment manufacturers.

JUNE 2018

SCAN TOOL SPEC GUIDE 2018

A comprehensive guide to provide you with information on choosing the right scan tool for your needs

IN ASSOCIATION WITH THE FOLLOWING PTEN-AFFILIATED PUBLICATIONS:

FLEET Maintenance
Professional Distributor



SPONSORED BY:

AUTEL

**AUTO
ENGINEUTY**

automechanika

**CanDo
INTERNATIONAL, INC.**

CAS
Connected Automotive Systems

**cojali
USA**

**FCQR
USA**

**LAUNCH
TECH USA**
CREATE • CHANGE

Snap-on

TEXA

**ELEVATE YOUR SHOP'S GAME.
UPGRADE YOUR BUSINESS.**



NEW JALTEST SOFTWARE 18.2

- ✓ Unparalleled Diagnostics Coverage - Class 3 through 9.
- ✓ New Vehicle System Scan - Medium & Light duty.
- ✓ System components are now related to live data for easier and faster inspections.
- ✓ 12 new makes, 427 new models & over 1,700 new capabilities added.
- ✓ 23,082 new fault codes & 2,504 troubleshooting guides.

Circle 250 on card, or enter at "e-inquiry" on VehicleServicePros.com



www.jaltest.com • 800-975-1865 • info@cojaliusa.com

DIAGNOSTICS AT THE PRICE YOU NEED

3 COLLISION

REPAIR READY SCAN TOOLS



ADVANCED
DIAGNOSTIC AUTO-SCAN+
PRINT DIAGNOSTIC REPORT+
SERVICE FUNCTIONS

AFFORDABLE
DIAGNOSTIC AUTO-SCAN+
SERVICE FUNCTIONS

ALL-IN-ONE
PRE-SCAN & POST-SCAN REPORTS+
DIAGNOSTIC AUTO-SCAN+
BI-DIRECTIONAL ACTIVATIONS & CODING+
SERVICE FUNCTIONS & COMPLETE TPMS



MAXICHECK MX808 7" SCREEN
ADVANCED SYSTEM DIAGNOSTICS

- Fast AutoSCAN of all Available Modules
- Printable Diagnostic Report
- Advanced Service Functions
- MaxiSYS Suite Applications



MAXIDIAG MD808P
SERVICE + SYSTEM DIAGNOSTICS

- Fast AutoSCAN of all Available Modules
- Affordable Service Functions
- All System Diagnostics
- FREE Lifetime Software Updates



MAXISYS MS906TS 8" SCREEN
COMPLETE DIAGNOSTICS + TPMS

- Print Pre-SCAN and Post-SCAN Reports
- Fast AutoSCAN of all Available Modules
- Advanced Service Functions
- MaxiSYS Suite Applications

Circle 251 on card, or enter at "e-inquiry" on VehicleServicePros.com



(855) 288-3587
maxitpms.com



autel.com

Register and update tools for latest coverage
©2018 Autel Intelligent Technology Inc.



SCAN TOOL SPEC GUIDE 2018

CONTENTS

**OBD-II GENERIC
SCAN TOOLS**
PAGE 6

**HEAVY DUTY
SCAN TOOLS**
PAGE 22

**OBD-II ENHANCED
SCAN TOOLS**
PAGE 12

**COMPANY
DIRECTORY**
PAGE 26

Welcome to the 2018 Scan Tool Spec Guide, brought to you by Professional Tool & Equipment News, Professional Distributor and Fleet Maintenance magazines.

Today's automotive landscape is interesting to be part of. With vehicle technology rapidly advancing, some say current generations are witnessing the beginning of the largest change in transportation since the Model T replaced the horse and buggy.

One thing that hasn't changed in all the years of automotive history – and won't change in the future – is the fact that vehicles still require maintenance and repair. The tools required to perform that work, on the other hand, have changed dramatically. Modern vehicles now contain computers running more lines of code than the space shuttle. To read that code and determine what needs to be serviced, technicians use scan tools.

For shops servicing more than one brand of vehicle, OEM scan tools aren't always the most logical choice. To find a solution compatible with multiple makes and models, technicians often turn to aftermarket scan tools. That's where the 2018 PTEN Scan Tool Spec Guide comes in.

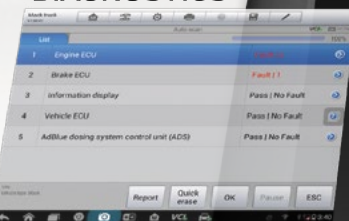
Covering the **OBD-II Generic**, **OBD-II Enhanced** and **Heavy Duty** categories, this convenient guide compares aftermarket scan tools side-by-side, making it easier for shops to decide which one best suits their needs. Over the next several pages, you'll find the most up-to-date information on scan tools from 26 different companies. Keep this guide on-hand for a quick reference as you consider scan tools for your business. **PTEN**

TRUCKKNOWLEDGY

ADVANCED ANALYSIS VEHICLE DIAGNOSTICS

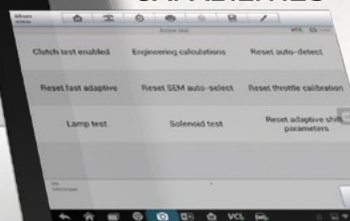


AUTO SCAN DIAGNOSTICS



Single Screen Quick Scan Fault Codes & Repair Details

BI-DIRECTIONAL CAPABILITIES



Advanced Functions & Active Tests For Specialized Components

CLASS 1 (0-6,000 LBS) – CLASS 9 (33,000 LBS)

ALL MAKES / ALL MODELS

WIFI-ACCESS



DOWNLOAD LATEST COVERAGE

REPAIR FASTER

- AutoSCAN Read & Clear Trouble Codes
- Full DPF Reset & Regen / Set Parameters
- Full Bi-Directional Controls
- Full Brake & Transmission Coverage
- Injector Coding / Cylinder Power Balancing

ANDROID 4.0



MAXISYS SUITE APPLICATIONS

WORK SMARTER

- MaxiFIX Diagnostic Repairs Database
- Data Manager / Shop Manager / Printer
- Remote Tech Support / Data Logging
- 1Yr FREE Software / Vehicle Coverage
- Tool Functions After Subscription Ends

J2534 MAXIFLASH ELITE

BLUETOOTH VCI

Advanced Coding & Parameter Settings

CAN-Based Protocols J1939 - J2284
OBDII-Based Protocol J1708

PROGRAMMING

Pass-Thru Device For Reprogramming

CAN-Based Protocol ISO15765 - ISO9141
GM (VPW) Protocol J1850

#MF2534



FULL CONNECTOR KIT

New Deutsch 9-Pin & 6-Pin / Full Probe Set / Carry Case



MS906CV

- Class1 - Class9 / All Makes - All Models
- Android 4.4.2 / Hexa-Core Processor
- OBDII Coded Tool / Full Probe Set

CONNECTOR KIT INCLUDED

Deutsch 9-Pin / Deutsch 6-Pin

AUTEL MaxiSys CV

ADVANCED SERVICE FUNCTIONS

HD SERVICE & DIAGNOSTICS

AutoVIN - AutoSCAN / 19 Service Features / All Systems Diagnostics



AL529HD

- AutoVIN Quick DTC Definitions
- Read & Clear Trouble Codes
- One Click I/M Readiness
- Enhanced Mode 6 Diagnostics

CONNECTORS INCLUDED

Deutsch 9-Pin / Deutsch 6-Pin

AUTEL AutoLink

EASY TO USE - AVOID DOWNTIME

SCAN ANYTIME, ANYWHERE

Graph, Record and Playback Live Data / Display Live and Freeze Frame Data

FCAR HD Scanners covers over 100 manufacturers of all major trucks, cars and off-road equipment. 1992 to current. Full diagnostic coverage and bidirection functions for:

Scanning all engine, transmission, brake, chassis and body control for all trucks and on-road equipment, and computer control systems on cars, including hundreds of reset and bi-directional functions, (ie. calibration and actuation test, cylinder cut out, DPF forced regeneration, injector coding, cylinder power balancing, and compression test).

Allison	Eaton	Kenworth	Sterling
Bendix	Freightliner	Mack	Volvo/Mack
Caterpillar	Hino	Mitsubishi Fuso	Voith
Cummins	International	PACCAR MX	Western Star
Detroit	John Deere	Peterbilt	Wabco
Duramax	Isuzu	Powerstroke	More vehicle makers

Smart wired/wireless truck diagnostic scanners



- Diagnostic and bidirection functions
- Calibration and reset
- All truck, offroad and car coverage
- PDF report and CSV data export
- Intergrated Motor FleetCross/ETech
- Wireless diagnostics
- Financial purchase option
- Limited lifetime warranty
- Durable and industrial hardware
- Cloud print, 3rd party APP, Internet capabilities (email, google etc)

FCAR USA

FCAR TECH USA

Truck Diagnostic and Beyond

Tel: 844-322-7872

Web: www.fcarusa.com

-F7S Wireless Tablet HD Scanners

Model: F7SN Truck TabPro; F7SG Master TabPro; F7SW Car TabPro

-F3S Handheld HD Scanners

Model: F3SN Truck Pro; F3SG Master Pro

-F50X HD Code Reader Pro

Model: F506



Circle 252 on card, or enter at "e-inquiry" on VehicleServicePros.com



(855) 288-3587
maxitpms.com



autel.com
Register and update tools for latest coverage
©2018 Autel Intelligent Technology Inc.

Follow Us @AutelTools
f t i y

AUTEL

COMPANY NAME	ALLDATA	Autel	Automotive Test Solutions	FCAR Tech USA	Innova		Launch Tech USA	Mac Tools	MAHLE Service Solutions	Matco Tools	OTC	Zurich
PRODUCT NAME	ALLDATA Diagnostics	MD808Pro	EScan Elite	F7SW CarTab Pro	5100 CarScan ABS/SRS		Millennium 90 Pro	ET1510ANX	TechPRO VDS1000	Fix Advisor Pro	3211 OBD I & II scan tool	ZR13 OBD2 Code Reader with ABS/SRS/FixAssist
Price												
Less than \$500	\$229/month	●			●		●	●	Software only		●	●
\$501 to \$2,000			●						Full kit	●		
\$2,001 to \$4,500				●								
\$4,501 to \$10,000												
Scanning Functions (1996 to Present)												
Reads generic data and monitors (Mode 1)	●	●	●	●	●		●	●	●	●	●	●
Displays freeze frame data (Mode 2)	●	●	●	●	●		●	●	●	●	●	●
Reads DTCs (Mode 3)	●	●	●	●	●		●	●	●	●	●	●
Clears all DTCs for all systems (Mode 4)	●	●	●	●	●		●	●	●	●	●	●
Reads test results for oxygen sensors (Mode 5)	●	●	●	●	●		●	●	●	●	●	●
Reads test results for other component/system monitoring (Mode 6)	●	●	●	●	●		●	●	●	●	●	●
If yes on line above: Provides test result definitions or raw hexadecimal data?	●	●	●	●	●		●	●	●	●	Raw hex for non-CAN, text for CAN vehicles	●
Reads pending DTCs (Mode 7)	●	●	●	●	●		●	●	●	●	●	●
Bi-directional control (actuator tests) (Mode 8)	●	●		●	●		●	●	●	●	●	●
Vehicle information - VIN # - (Mode 9)	●	●	●	●	●		●	●	●	●	●	●
Reads permanent DTCs (Mode 0A)	●	●	●	●	●		●	●	●	●	●	●
Other Functions												
Anti-theft/key duplication				●					●			
Electronic brake service	●	●		●			●	●	●	●		
Inspection interval lights	●	●		●	●		●	●	●	●		●
Graphs live data on screen	●	●	●	●	●		●	●	●	●	●	●
Graphs multiple PIDs on screen simultaneously	●	2	●	●	2		4	2	No limit	4	2	2
Record and play back OBD-II live data		●	●	●	●		●	●	●	●	●	●
Reset oil lights	●	●		●	●		●	●	●	●	●	●
Steering angle service	●	●		●			●	●	●	●		
Vehicle search capability/scanning by VIN	●	●	●	●	●			●	●	●	●	●
Remote Diagnostics												
Specific System Coverage and Enhanced Bi-directional Controls												
Body control - BCM (codes, data or both)	Both	Both		Both	Codes				Both	Both		
Chassis control - BCM (codes, data or both)	Both	Both		Both	Codes				Both	Both		
Powertrain control - PCM (codes, data or both)	Both	Both	Both	Both	Both		Both	Both	Both	Both	Codes	Both
ABS coverage (codes, data or both)	Both	Both		Both	Both		Both	Both	Both	Both	Codes	Both
SRS coverage (codes, data or both)	Both	Both		Both	Both		Both	Codes	Both	Both	Codes	Both
HVAC (codes, data or both)	Both	Both		Both	Codes				Both			
OBD-I Adapters (Pre-1996)												
Domestic coverage		●		●	●					Optional	●	
Asian coverage		●		●	●					Optional	Toyota	

COMPANY NAME	ALLDATA	Autel	Automotive Test Solutions	FCAR Tech USA	Innova		Launch Tech USA	Mac Tools	MAHLE Service Solutions	Matco Tools	OTC	Zurich
PRODUCT NAME	ALLDATA Diagnostics	MD808Pro	EScan Elite	F7SW CarTab Pro	5100 CarScan ABS/SRS		Millennium 90 Pro	ET1510ANX	TechPRO VDS1000	Fix Advisor Pro	3211 OBD I & II scan tool	ZR13 OBD2 Code Reader with ABS/SRS/FixAssist
European coverage	●	●		●						Optional		
Unit Features												
Unit type	User Defined	Handheld	PC-based	Tablet	Handheld		Handheld	Handheld	PC-based	Handheld	Handheld	Handheld
Requires separate laptop or PC	PC or tablet		Windows PC or tablet				For updates		●			
Operating system	Windows 10 or Android	Embedded	Windows XP through 10	Android			Proprietary	Proprietary			Proprietary	Proprietary
Hard drive size		32 GB	1 GB	20 GB				1 GB				
Built-in memory or memory on included SD card		●		2 GB	●		8 GB	●			128 MB	●
Multilingual		●		●	●		●	●		●	●	●
Internal battery included				●						Requires 3 AA batteries	●	
Length of time to fully charge unit				4 hours								
Length of time unit runs on one charge				8 hours								
Unit boot-up time	15 seconds	10 seconds		8 seconds	10 seconds		5 seconds	15 seconds			Instant-on	10 seconds
High-resolution color screen		●	●	●	●		●			●	Color QVGA	
Touchscreen interface	●		User defined	●								
Screen size	7" +	4"	User defined	10.5"	2.8"		4"			3.5"	3"	2.8"
Printable vehicle diagnostic report capabilities	●	●	●	●			●	●	●	●	●	●
USB port		●	●	●	●		●	●		●	●	●
VGA port				●								
HDMI port				●								
Wireless VCI (unit-to-car capabilities)	●		●	●					●			
Wi-Fi/Internet capable	●		●	●								
Available Tool Add-Ons												
5-gas analyzer			Add-on	●								
TPMS resets	●			●								
TPMS relearns	●			●								
Labscope capability			Add-on									
J2534 reflash and pass-through diagnostic capability												
Multimeter			Add-on									
Software, Website, Support and Service Features												
Manufacturer's warranty	3 years hardware	1 year	1 year	1 year	1 year		1 year	1 year	1 year	2 years	1 year	90 days
Call-in support	800-859-3282	855-288-3587	505-265-5077	443-380-0088	800-544-4124		877-528-6249	800-622-8665	800-468-2321	866-289-8665	800-533-6127	800-444-3353
Field/Rep support	●	●		●	●		●	●			●	
Pay-as-you-go subscription		●			●				●			
Length of subscription	3 years	Lifetime	1 year	2 years	1 year		Lifetime					
Updatable via the Internet	●	●	●	●	●		●	●	●	●	●	●
Frequency of updates, if applicable	3 times per year	As needed	As needed	As needed	Other		Monthly	As needed	Monthly	As needed	As needed	As needed
Cost per update	Free	Free	Free for at least 1 year	\$500	Free		Free	Free		Free	Free	Free
Optional repair solutions for VIN-specific fixes	●	●		●	●			●		●	●	
Optional diagnostic and repair procedure instructions/videos	●	●	●		●							
Includes the following repair information services	ALLDATA				RepairSolutions					1 year Repair Solutions Pro		Fix Assist
Interfaces with the following shop management systems												
Most Important Feature	Seamless integration with ALLDATA	Auto-scan all modules in all systems	Sharp shooter, relative compression, acceleration, deceleration	Fast, simple and easy diagnostic	Network Scan		ABS-SRS-engine-transmission, with DPF, five other resets	Enhanced datastream with bi-directional coverage/brake bleed	Auto-identify modules, fast, easy diagnosis/repair	Bi-directional tests and repair information	Compatible with OBD I & II vehicles	Live Stream/ABS/SRS with FixAssist

Next Generation Diagnostics

The first full diagnostics platform completely re-invented **for mobile**

POWER

Gesture-based user interface allowing for more complex interactions

SPEED

WIFI for greater distance and faster throughout

COVERAGE

Highest scoring scan tool in the 2017 collision scan tool shootout

REPORTING

Pre- and Post-scan to XML, text message, email, and PDF

- 58 car makers
- Full DTC output (including freeze frame, event data, odometer, fault frequency, number of ignition cycles, etc.)
- Bi-directional controls and system tests (including Power Balance, Crank Learn, etc.)
- Reset adaptations and calibrations (including SAS, Yaw Rate, Zero Calibrations, and DPF Relearns, etc.)
- Annual update costs 50 -450



**LAUNCH
TECH USA**
CREATE • CHANGE

X-431 PAD II AE

It is a Professional Scan Tool, which utilizes easy to operate Android™ tablet technology to meet your needs and expand as your business grows. Full system diagnostics, printable reports for Pre and Post scans, online vehicle research, and even part ordering is no problem with the open Android™ platform.

**"ONE SCAN TOOL DOES IT ALL"
DUST PROOF AND IP 65 RATED**



480-827-TOOL (8665)

www.autoengineuity.com

Circle 254 on card, or enter at "e-inquiry" on VehicleServicePros.com

WWW.LAUNCHTECHUSA.COM

1820 S. MILLIKEN AVE • ONTARIO, CA 91761 • PH : 1-877-528-6249

Circle 255 on card, or enter at "e-inquiry" on VehicleServicePros.com

COMPANY NAME	AirPro Diagnostics	ALLDATA	Autel	AutoEnginuity	Autoland Scientech USA	Autologic	CAS of New England	FCAR Tech USA	Injectronic	Innova	Launch Tech USA	Mac Tools	MAHLE	Matco Tools	OTC	Ross-Tech	Snap-on Diagnostics	TEXA USA	
PRODUCT NAME	AirPro	ALLDATA Diagnostics	MaxiSYS MS906TS	Giotto ProLine SPO2	iSCAN3	Farsight Tablet	G-Scan 2	F7SG MasterTab Pro	CJ4R	5160 CarScan Pro	Torque	ET7200	TechPRO VDS1000	MaxME-A	3896 Evolve	VCDS Prokit	ZEUS platform	TXTs with IDC5 SUPERCAR	
Price																			
Under \$500		\$229/month								•			•						
\$501 to \$2,000			•	•					•					•		•			
\$2,001 to \$4,500	•				•		•				•				•				
\$4,501 to \$10,000					•	•	•	•				•			•				•
More than \$10,000						•											•		
Scanning Functions (1996 to Present)																			
Fully supports all 10 modes of OBD-II scan tool operation (Mode 1 through Mode 0A)	•	•	•	•	•	•	•	•	•	•	•	•	•	•	•	•	•	•	•
Other Functions																			
Anti-theft/key duplication			•	Ford/GM	•	•	•	•	•		•	•	•	•	•	•	•	•	•
Electronic brake service	•	•	•	•	•	•	•	•	•	•	•	•	•	•	•	•	•	•	•
Guided tests/on-screen help	•	•	•	•	•	•	•	•		•	•	•	•	•	•	•	•	•	•
Inspection interval lights	•	•	•	•	•	•	•	•	•	•	•	•	•	•	•	•	•	•	•
J2534 reflash and pass-through diagnostic capability	•				•	•	•					•			•				•
Record and play back OBD-II live data	•		•	•		•	•	•		•	•	•	•	•	•	•	•	•	•
Reset oil lights	•	•	•	•	•	•	•	•		•	•	•	•	•	•	•	•	•	•
Steering angle service	•	•	•	•	•	•	•	•	•	•	•	•	•	•	•	•	•	•	•
Vehicle search capability/scanning by VIN	•	•	•	•	•	•	•	•	•	•	•	•	•	•	•	•	•	•	•
Graphs live data on screen	•	•	•	•	•	•	•	•	•	•	•	•	•	•	•	•	•	•	•
Graphs multiple PIDs on screen simultaneously	8	•	•	8	30 +	EScan 8 graphs/ GScan 4 graphs	4	•	2	4	12	8	No limit	8	8	16	•	•	8
Remote diagnostics	•		•	•	•				•		•						•		
Specific System Coverage - Data and Bi-Directional Controls																			
Body control - BCM (Data/Bi-Directional Control)																			
Chrysler	Y/Y	Y/Y	Y/Y	Y/Y	Y/Y	Y/Y	Y/Y	Y/Y	Y/Y	Y/N	Y/Y	Y/Y	Y/Y	Y/Y	Y/Y	N/N	Y/Y	Y/Y	
Ford	Y/Y	Y/Y	Y/Y	Y/Y	Y/N	Y/Y	Y/Y	Y/Y	Y/Y	Y/N	Y/Y	Y/Y	Y/Y	Y/Y	Y/Y	N/N	Y/Y	Y/Y	
GM	Y/Y	Y/Y	Y/Y	Y/Y	Y/Y	Y/Y	Y/Y	Y/Y	Y/Y	Y/N	Y/Y	Y/Y	Y/Y	Y/Y	Y/Y	N/N	Y/Y	N/N	
Honda	Y/Y	Y/Y	Y/Y	Y/Y	Y/Y	Y/Y	Y/Y	Y/Y	N/N	Y/N	Y/Y	Y/Y	Y/Y	Y/Y	Y/Y	N/N	Y/Y	N/N	
Hyundai	Y/Y	Y/Y	Y/Y	Y/Y	Y/Y	Y/Y	Y/Y	Y/Y	Y/Y	Y/N	Y/Y	Y/Y	N/N	Y/Y	Y/Y	N/N	Y/Y	Y/Y	
Mazda	Y/Y	Y/Y	Y/Y	Y/Y	Y/N	Y/Y	Y/Y	Y/Y	Y/Y	Y/N	Y/Y	Y/Y	Y/Y	Y/Y	Y/Y	N/N	Y/Y	Y/Y	
Nissan	Y/Y	Y/Y	Y/Y	Y/Y	Y/Y	Y/Y	Y/Y	Y/Y	Y/Y	Y/N	Y/Y	Y/Y	Y/Y	Y/Y	Y/Y	N/N	Y/Y	N/N	
Toyota	Y/Y	Y/Y	Y/Y	Y/Y	Y/Y	Y/Y	Y/Y	Y/Y	Y/Y	Y/N	Y/Y	Y/Y	Y/Y	Y/Y	Y/Y	N/N	Y/Y	Y/Y	
BMW	Y/Y	Y/Y	Y/Y	Y/Y	Y/Y	Y/Y	Y/Y	Y/Y	N/N	Y/N	Y/Y	Y/Y	N/N	Y/Y	Y/Y	N/N	Y/Y	Y/Y	
Mercedes-Benz	Y/Y	Y/Y	Y/Y	Y/Y	Y/Y	Y/Y	Y/Y	Y/Y	N/N	Y/N	Y/Y	Y/Y	N/N	Y/Y	Y/Y	N/N	Y/Y	Y/Y	
Volkswagen	Y/Y	Y/Y	Y/Y	Y/Y	Y/Y	Y/Y	Y/Y	Y/Y	Y/Y	Y/N	Y/Y	Y/Y	Y/Y	Y/Y	Y/Y	Y/Y	Y/Y	Y/Y	
Volvo	Y/Y	Y/Y	Y/Y	Y/Y	Y/Y	Y/Y	Y/Y	Y/Y	N/N	Y/N	Y/Y	Y/Y	N/N	Y/Y	Y/Y	N/N	Y/Y	Y/Y	
Chassis control - BCM (Data/Bi-Directional Control)																			
Chrysler	Y/Y	Y/Y	Y/Y	Y/Y	Y/Y	Y/Y	Y/Y	Y/Y	Y/Y	Y/N	Y/Y	Y/Y	Y/Y	Y/Y	Y/Y	N/N	Y/Y	Y/Y	
Ford	Y/Y	Y/Y	Y/Y	Y/Y	Y/N	Y/Y	Y/Y	Y/Y	Y/Y	Y/N	Y/Y	Y/Y	Y/Y	Y/Y	Y/Y	N/N	Y/Y	Y/Y	
GM	Y/Y	Y/Y	Y/Y	Y/Y	Y/Y	Y/Y	Y/Y	Y/Y	Y/Y	Y/N	Y/Y	Y/Y	Y/Y	Y/Y	Y/Y	N/N	Y/Y	N/N	
Honda	Y/Y	Y/Y	Y/Y	Y/Y	Y/Y	Y/Y	Y/Y	Y/Y	N/N	Y/N	Y/Y	Y/Y	Y/Y	Y/Y	Y/Y	N/N	Y/Y	N/N	
Hyundai	Y/Y	Y/Y	Y/Y	Y/Y	Y/Y	Y/Y	Y/Y	Y/Y	Y/Y	Y/N	Y/Y	Y/Y	N/N	Y/Y	Y/Y	N/N	Y/Y	Y/Y	
Mazda	Y/Y	Y/Y	Y/Y	Y/Y	Y/N	Y/Y	Y/Y	Y/Y	Y/Y	Y/N	Y/Y	Y/Y	Y/Y	Y/Y	Y/Y	N/N	Y/Y	Y/Y	
Nissan	Y/Y	Y/Y	Y/Y	Y/Y	Y/Y	Y/Y	Y/Y	Y/Y	Y/Y	Y/N	Y/Y	Y/Y	Y/Y	Y/Y	Y/Y	N/N	Y/Y	N/N	
Toyota	Y/Y	Y/Y	Y/Y	Y/Y	Y/Y	Y/Y	Y/Y	Y/Y	Y/Y	Y/N	Y/Y	Y/Y	Y/Y	Y/Y	Y/Y	N/N	Y/Y	Y/Y	

COMPANY NAME	AirPro Diagnostics	ALLDATA	Autel	AutoEnginuity	Autoland Scientech USA	Autologic	CAS of New England	FCAR Tech USA	Injectronic	Innova	Launch Tech USA	Mac Tools	MAHLE	Matco Tools	OTC	Ross-Tech	Snap-on Diagnostics	TEXA USA	
PRODUCT NAME	AirPro	ALLDATA Diagnostics	MaxiSYS MS906TS	Giotto ProLine SPO2	iSCAN3	Farsight Tablet	G-Scan 2	F7SG MasterTab Pro	CJ4R	5160 CarScan Pro	Torque	ET7200	TechPRO VDS1000	MaxME-A	3896 Evolve	VCDS Prokit	ZEUS platform	TXTs with IDC5 SUPERCAR	
Chassis control - BCM (Data/Bi-Directional Control) (continued)																			
BMW	Y/Y	Y/Y	Y/Y	Y/Y	Y/Y	Y/Y	Y/Y	Y/Y	N/N	Y/N	Y/Y	Y/Y	N/N	Y/Y	Y/Y	N/N	Y/Y	Y/Y	
Mercedes-Benz	Y/Y	Y/Y	Y/Y	Y/Y	Y/Y	Y/Y	Y/Y	Y/Y	N/N	Y/N	Y/Y	Y/Y	N/N	Y/Y	Y/Y	N/N	Y/Y	Y/Y	
Volkswagen/Audi	Y/Y	Y/Y	Y/Y	Y/Y	Y/Y	Y/Y	Y/Y	Y/Y	Y/Y	Y/N	Y/Y	Y/Y	Y/Y	Y/Y	Y/Y	Y/Y	Y/Y	Y/Y	
Volvo	Y/Y	Y/Y	Y/Y	Y/Y	Y/Y	Y/Y	Y/Y	Y/Y	N/N	Y/N	Y/Y	Y/Y	N/N	Y/Y	Y/Y	N/N	Y/Y	Y/Y	
Powertrain control - PCM (Data/Bi-Directional Control)																			
Chrysler	Y/Y	Y/Y	Y/Y	Y/Y	Y/Y	Y/Y	Y/Y	Y/Y	Y/Y	Y/Y	Y/Y	Y/Y	Y/Y	Y/Y	Y/Y	N/N	Y/Y	Y/Y	
Ford	Y/Y	Y/Y	Y/Y	Y/Y	Y/N	Y/Y	Y/Y	Y/Y	Y/Y	Y/Y	Y/Y	Y/Y	Y/Y	Y/Y	Y/Y	N/N	Y/Y	Y/Y	
GM	Y/Y	Y/Y	Y/Y	Y/Y	Y/Y	Y/Y	Y/Y	Y/Y	Y/Y	Y/Y	Y/Y	Y/Y	Y/Y	Y/Y	Y/Y	N/N	Y/Y	N/N	
Honda	Y/Y	Y/Y	Y/Y	Y/Y	Y/Y	Y/Y	Y/Y	Y/Y	N/N	Y/Y	Y/Y	Y/Y	Y/Y	Y/Y	Y/Y	N/N	Y/Y	N/N	
Hyundai	Y/Y	Y/Y	Y/Y	Y/Y	Y/Y	Y/Y	Y/Y	Y/Y	Y/Y	Y/N	Y/Y	Y/Y	N/N	Y/Y	Y/Y	N/N	Y/Y	Y/Y	
Mazda	Y/Y	Y/Y	Y/Y	Y/Y	Y/N	Y/Y	Y/Y	Y/Y	Y/Y	Y/N	Y/Y	Y/Y	Y/Y	Y/Y	Y/Y	N/N	Y/Y	Y/Y	
Nissan	Y/Y	Y/Y	Y/Y	Y/Y	Y/Y	Y/Y	Y/Y	Y/Y	Y/Y	Y/N	Y/Y	Y/Y	Y/Y	Y/Y	Y/Y	N/N	Y/Y	N/N	
Toyota	Y/Y	Y/Y	Y/Y	Y/Y	Y/Y	Y/Y	Y/Y	Y/Y	Y/Y	Y/Y	Y/Y	Y/Y	Y/Y	Y/Y	Y/Y	N/N	Y/Y	Y/Y	
BMW	Y/Y	Y/Y	Y/Y	Y/Y	Y/Y	Y/Y	Y/Y	Y/Y	N/N	Y/N	Y/Y	Y/Y	N/N	Y/Y	Y/Y	N/N	Y/Y	Y/Y	
Mercedes-Benz	Y/Y	Y/Y	Y/Y	Y/Y	Y/Y	Y/Y	Y/Y	Y/Y	N/N	Y/N	Y/Y	Y/Y	N/N	Y/Y	Y/Y	N/N	Y/Y	Y/Y	
Volkswagen/Audi	Y/Y	Y/Y	Y/Y	Y/Y	Y/Y	Y/Y	Y/Y	Y/Y	Y/Y	Y/N	Y/Y	Y/Y	Y/Y	Y/Y	Y/Y	Y/Y	Y/Y	Y/Y	
Volvo	Y/Y	Y/Y	Y/Y	Y/Y	Y/Y	Y/Y	Y/Y	Y/Y	N/N	Y/N	Y/Y	Y/Y	N/N	Y/Y	Y/Y	N/N	Y/Y	Y/Y	
ABS coverage (Data/Bi-Directional Control)																			
Chrysler	Y/Y	Y/Y	Y/Y	Y/Y	Y/Y	Y/Y	Y/Y	Y/Y	Y/Y	Y/N	Y/Y	Y/Y	Y/Y	Y/Y	Y/Y	N/N	Y/Y	Y/Y	
Ford	Y/Y	Y/Y	Y/Y	Y/Y	Y/N	Y/Y	Y/Y	Y/Y	Y/Y	Y/N	Y/Y	Y/Y	Y/Y	Y/Y	Y/Y	N/N	Y/Y	Y/Y	
GM	Y/Y	Y/Y	Y/Y	Y/Y	Y/Y	Y/Y	Y/Y	Y/Y	Y/Y	Y/N	Y/Y	Y/Y	Y/Y	Y/Y	Y/Y	N/N	Y/Y	N/N	
Honda	Y/Y	Y/Y	Y/Y	Y/Y	Y/Y	Y/Y	Y/Y	Y/Y	N/N	Y/N	Y/Y	Y/Y	Y/Y	Y/Y	Y/Y	N/N	Y/Y	N/N	
Hyundai	Y/Y	Y/Y	Y/Y	Y/Y	Y/Y	Y/Y	Y/Y	Y/Y	Y/Y	Y/N	Y/Y	Y/Y	N/N	Y/Y	Y/Y	N/N	Y/Y	Y/Y	
Mazda	Y/Y	Y/Y	Y/Y	Y/Y	Y/N	Y/Y	Y/Y	Y/Y	Y/Y	Y/N	Y/Y	Y/Y	Y/Y	Y/Y	Y/Y	N/N	Y/Y	Y/Y	
Nissan	Y/Y	Y/Y	Y/Y	Y/Y	Y/Y	Y/Y	Y/Y	Y/Y	Y/Y	Y/N	Y/Y	Y/Y	Y/Y	Y/Y	Y/Y	N/N	Y/Y	N/N	
Toyota	Y/Y	Y/Y	Y/Y	Y/Y	Y/Y	Y/Y	Y/Y	Y/Y	Y/Y	Y/N	Y/Y	Y/Y	Y/Y	Y/Y	Y/Y	N/N	Y/Y	Y/Y	
BMW	Y/Y	Y/Y	Y/Y	Y/Y	Y/Y	Y/Y	Y/Y	Y/Y	N/N	Y/N	Y/Y	Y/Y	N/N	Y/Y	Y/Y	N/N	Y/Y	Y/Y	
Mercedes-Benz	Y/Y	Y/Y	Y/Y	Y/Y	Y/Y	Y/Y	Y/Y	Y/Y	N/N	Y/N	Y/Y	Y/Y	N/N	Y/Y	Y/Y	N/N	Y/Y	Y/Y	
Volkswagen/Audi	Y/Y	Y/Y	Y/Y	Y/Y	Y/Y	Y/Y	Y/Y	Y/Y	Y/Y	Y/N	Y/Y	Y/Y	Y/Y	Y/Y	Y/Y	Y/Y	Y/Y	Y/Y	
Volvo	Y/Y	Y/Y	Y/Y	Y/Y	Y/Y	Y/Y	Y/Y	Y/Y	N/N	Y/N	Y/Y	Y/Y	N/N	Y/Y	Y/Y	N/N	Y/Y	Y/Y	
SRS coverage (Data/Bi-Directional Control)																			
Chrysler	Y/Y	Y/Y	Y/Y	Y/Y	Y/Y	Y/Y	Y/Y	Y/Y	Y/Y	Y/N	Y/Y	Y/Y	Y/Y	Y/Y	Y/Y	N/N	Y/Y	Y/Y	
Ford	Y/Y	Y/Y	Y/Y	Y/Y	Y/N	Y/Y	Y/Y	Y/Y	Y/Y	Y/N	Y/Y	Y/Y	Y/Y	Y/Y	Y/Y	N/N	Y/Y	Y/Y	
GM	Y/Y	Y/Y	Y/Y	Y/Y	Y/Y	Y/Y	Y/Y	Y/Y	Y/Y	Y/N	Y/Y	Y/Y	Y/Y	Y/Y	Y/Y	N/N	Y/Y	N/N	
Honda	Y/Y	Y/Y	Y/Y	Y/Y	Y/Y	Y/Y	Y/Y	Y/Y	N/N	Y/N	Y/Y	Y/Y	Y/Y	Y/Y	Y/Y	N/N	Y/Y	N/N	
Hyundai	Y/Y	Y/Y	Y/Y	Y/Y	Y/Y	Y/Y	Y/Y	Y/Y	Y/Y	Y/N	Y/Y	Y/Y	N/N	Y/Y	Y/Y	N/N	Y/Y	Y/Y	
Mazda	Y/Y	Y/Y	Y/Y	Y/Y	Y/N	Y/Y	Y/Y	Y/Y	Y/Y	Y/N	Y/Y	Y/Y	Y/Y	Y/Y	Y/Y	N/N	Y/Y	Y/Y	
Nissan	Y/Y	Y/Y	Y/Y	Y/Y	Y/Y	Y/Y	Y/Y	Y/Y	Y/Y	Y/N	Y/Y	Y/Y	Y/Y	Y/Y	Y/Y	N/N	Y/Y	N/N	
Toyota	Y/Y	Y/Y	Y/Y	Y/Y	Y/Y	Y/Y	Y/Y	Y/Y	Y/Y	Y/N	Y/Y	Y/Y	Y/Y	Y/Y	Y/Y	N/N	Y/Y	Y/Y	
BMW	Y/Y	Y/Y	Y/Y	Y/Y	Y/Y	Y/Y	Y/Y	Y/Y	N/N	Y/N	Y/Y	Y/Y	N/N	Y/Y	Y/Y	N/N	Y/Y	Y/Y	
Mercedes-Benz	Y/Y	Y/Y	Y/Y	Y/Y	Y/Y	Y/Y	Y/Y	Y/Y	N/N	Y/N	Y/Y	Y/Y	N/N	Y/Y	Y/Y	N/N	Y/Y	Y/Y	
Volkswagen/Audi	Y/Y	Y/Y	Y/Y	Y/Y	Y/Y	Y/Y	Y/Y	Y/Y	Y/Y	Y/N	Y/Y	Y/Y	Y/Y	Y/Y	Y/Y	Y/Y	Y/Y	Y/Y	
Volvo	Y/Y	Y/Y	Y/Y	Y/Y	Y/Y	Y/Y	Y/Y	Y/Y	N/N	Y/N	Y/Y	Y/Y	N/N	Y/Y	Y/Y	N/N	Y/Y	Y/Y	
HVAC (Data/Bi-Directional Control)																			
Chrysler	Y/Y	Y/Y	Y/Y	Y/Y	Y/Y	Y/Y	Y/Y	Y/Y	Y/Y	Y/N	Y/Y	Y/Y	Y/Y	Y/Y	Y/Y	N/N	Y/Y	Y/Y	

COMPANY NAME	AirPro Diagnostics	ALLDATA	Autel	AutoEnginuity	Autoland Scientech USA	Autologic	CAS of New England	FCAR Tech USA	Injectronic	Innova	Launch Tech USA	Mac Tools	MAHLE	Matco Tools	OTC	Ross-Tech	Snap-on Diagnostics	TEXA USA	
PRODUCT NAME	AirPro	ALLDATA Diagnostics	MaxiSYS MS906TS	Giotto ProLine SP02	iSCAN3	Farsight Tablet	G-Scan 2	F7SG MasterTab Pro	CJ4R	5160 CarScan Pro	Torque	ET7200	TechPRO VDS1000	MaxME-A	3896 Evolve	VCDS Prokit	ZEUS platform	TXTs with IDC5 SUPERCAR	
HVAC (Data/Bi-Directional Control) (continued)																			
Ford	Y/Y	Y/Y	Y/Y	Y/Y	Y/N	Y/Y	Y/Y	Y/Y	Y/Y	Y/N	Y/Y	Y/Y	Y/Y	Y/Y	Y/Y	N/N	Y/Y	Y/Y	
GM	Y/Y	Y/Y	Y/Y	Y/Y	Y/Y	Y/Y	Y/Y	Y/Y	Y/Y	Y/N	Y/Y	Y/Y	Y/Y	Y/Y	Y/Y	N/N	Y/Y	N/N	
Honda	Y/Y	Y/Y	Y/Y	Y/Y	Y/Y	Y/Y	Y/Y	Y/Y	N/N	Y/N	Y/Y	Y/Y	Y/Y	Y/Y	Y/Y	N/N	Y/Y	N/N	
Hyundai	Y/Y	Y/Y	Y/Y	Y/Y	Y/Y	Y/Y	Y/Y	Y/Y	Y/Y	Y/N	Y/Y	Y/Y	N/N	Y/Y	Y/Y	N/N	Y/Y	Y/Y	
Mazda	Y/Y	Y/Y	Y/Y	Y/Y	Y/N	Y/Y	Y/Y	Y/Y	Y/Y	Y/N	Y/Y	Y/Y	Y/Y	Y/Y	Y/Y	N/N	Y/Y	Y/Y	
Nissan	Y/Y	Y/Y	Y/Y	Y/Y	Y/Y	Y/Y	Y/Y	Y/Y	Y/Y	Y/N	Y/Y	Y/Y	Y/Y	Y/Y	Y/Y	N/N	Y/Y	N/N	
Toyota	Y/Y	Y/Y	Y/Y	Y/Y	Y/Y	Y/Y	Y/Y	Y/Y	Y/Y	Y/N	Y/Y	Y/Y	Y/Y	Y/Y	Y/Y	N/N	Y/Y	Y/Y	
BMW	Y/Y	Y/Y	Y/Y	Y/Y	Y/Y	Y/Y	Y/Y	Y/Y	N/N	Y/N	Y/Y	Y/Y	N/N	Y/Y	Y/Y	N/N	Y/Y	Y/Y	
Mercedes-Benz	Y/Y	Y/Y	Y/Y	Y/Y	Y/Y	Y/Y	Y/Y	Y/Y	N/N	Y/N	Y/Y	Y/Y	N/N	Y/Y	Y/Y	N/N	Y/Y	Y/Y	
Volkswagen/Audi	Y/Y	Y/Y	Y/Y	Y/Y	Y/Y	Y/Y	Y/Y	Y/Y	Y/Y	Y/N	Y/Y	Y/Y	Y/Y	Y/Y	Y/Y	Y/Y	Y/Y	Y/Y	
Volvo	Y/Y	Y/Y	Y/Y	Y/Y	Y/Y	Y/Y	Y/Y	Y/Y	N/N	Y/N	Y/Y	Y/Y	N/N	Y/Y	Y/Y	N/N	Y/Y	Y/Y	
Enhanced European Coverage (Data/Bi-Directional Control)																			
Alfa Romeo	Y/Y	Y/Y	Y/Y	Y/Y	Y/N	N/N	Y/Y	Y/Y	N/N	N/N	Y/Y	N/N	N/N	Y/Y	N/N	N/N	Y/Y	Y/Y	
Bentley	Y/Y	Y/Y	Y/Y	Y/Y	Y/Y	N/N	N/N	Y/Y	N/N	N/N	Y/Y	N/N	N/N	Y/Y	N/N	Y/Y	N/N	Y/Y	
Bugatti	N/N	N/N	Y/Y	N/N	N/N	N/N	N/N	Y/Y	N/N	N/N	Y/Y	N/N	N/N	Y/Y	N/N	N/N	N/N	N/N	
Ferrari	Y/Y	N/N	Y/Y	Y/Y	Y/Y	N/N	N/N	Y/Y	N/N	N/N	Y/Y	N/N	N/N	Y/Y	N/N	N/N	N/N	Y/Y	
Fiat	Y/Y	Y/Y	Y/Y	Y/Y	Y/N	Y/Y	Y/Y	Y/Y	Y/Y	N/N	Y/Y	Y/Y	N/N	Y/Y	Y/Y	N/N	Y/Y	Y/Y	
Jaguar	Y/Y	Y/Y	Y/Y	Y/Y	Y/Y	Y/Y	Y/Y	Y/Y	N/N	N/N	Y/Y	Y/Y	N/N	Y/Y	Y/Y	N/N	Y/Y	Y/Y	
Lotus	N/N	N/N	N/N	N/N	N/N	N/N	N/N	Y/Y	N/N	N/N	Y/Y	N/N	N/N	Y/Y	N/N	N/N	N/N	Y/Y	
Maserati	Y/Y	N/N	Y/Y	Y/Y	Y/Y	N/N	N/N	Y/Y	N/N	N/N	Y/Y	N/N	N/N	Y/Y	N/N	N/N	N/N	Y/Y	
Maybach	Y/Y	N/N	Y/Y	Y/Y	N/N	N/N	Y/Y	Y/Y	N/N	N/N	Y/Y	N/N	N/N	Y/Y	N/N	N/N	N/N	Y/Y	
Mini Cooper	Y/Y	Y/Y	Y/Y	Y/Y	Y/Y	Y/Y	Y/Y	Y/Y	N/N	N/N	Y/Y	Y/Y	N/N	Y/Y	Y/Y	N/N	Y/Y	Y/Y	
Opel	Y/Y	Y/Y	Y/Y	Y/Y	Y/Y	N/N	N/N	Y/Y	Y/Y	N/N	Y/Y	N/N	N/N	Y/Y	N/N	N/N	Y/Y	N/N	
Peugeot	N/N	Y/Y	Y/Y	N/N	Y/Y	N/N	N/N	Y/Y	Y/Y	N/N	Y/Y	N/N	N/N	Y/Y	N/N	N/N	Y/Y	N/N	
Porsche	Y/Y	Y/Y	Y/Y	Y/Y	Y/Y	N/N	Y/Y	Y/Y	N/N	N/N	Y/Y	N/N	N/N	Y/Y	N/N	N/N	Y/Y	Y/Y	
Range Rover	Y/Y	Y/Y	Y/Y	Y/Y	Y/Y	Y/Y	Y/Y	Y/Y	N/N	N/N	Y/Y	Y/Y	N/N	Y/Y	Y/Y	N/N	Y/Y	Y/Y	
Renault	N/N	Y/Y	Y/Y	N/N	Y/N	N/N	N/N	Y/Y	Y/Y	N/N	Y/Y	Y/Y	N/N	Y/Y	N/N	N/N	Y/Y	N/N	
Saab	N/N	Y/Y	Y/Y	Y/Y	Y/Y	N/N	Y/Y	Y/Y	N/N	N/N	Y/Y	Y/Y	N/N	Y/Y	Y/Y	N/N	Y/Y		
Other	Audi, BMW, Land Rover		Sprinter, Aston Martin, Lancia, Smart, Dacia, Abarth, Vauxhall/Citroen, Lamborghini, Rolls Royce	Lamborghini, Vauxhall, Workhorse	Citroen, Ferrari, Lamborghini, Lancia, Land Rover, Renault, Skoda, Smart, Vauxhall	Sprinters	Land Rover, HINO Truck, Isuzu, Mitsubishi, Subaru				Rolls Royce, Lamborghini					Lamborghini model year 2009+		Aston Martin, Lamborghini, McLaren, Rolls-Royce, Land Rover, Pagani	
OBD-I Adapters (Pre-1996)																			
Domestic coverage			●		●		●	●		●	●	Optional		Optional	Coverage included, adapters sold separately		●		
Asian coverage			●	●	●		●	●		●	●	Optional		Optional	Coverage included, adapters sold separately		●		
European coverage		●	●	●	●		●	●			●	Optional		Optional		Requires adapter	●	●	
Unit Features																			
Unit type	Tablet Integrated	User defined	Standalone tablet	User defined	Handheld	Standalone tablet	Handheld	Tablet		Tablet/smartphone	Handheld	Tablet	Standalone tablet	PC-based	Tablet	Tablet	Software-based for PC, smartphone and tablet	Tablet	Tablet
Requires separate laptop or PC		PC or tablet												●		●	Vehicle diagnostics within tool, J2534 reprogramming requires laptop and OEM software		
Operating system	Windows 10 Tablet	Windows 10 or Android	Android	Windows, iOS, Android	Android	Windows 10	Windows CE 6.0	Android		Android, iOS		Android 7.1	Android	Windows 7 or newer	Android	Android	Windows, iOS, Android	Windows	Windows 10

COMPANY NAME	AirPro Diagnostics	ALLDATA	Autel	AutoEnginuity	Autoland Scientech USA	Autologic	CAS of New England	FCAR Tech USA	Injectronic	Innova	Launch Tech USA	Mac Tools	MAHLE	Matco Tools	OTC	Ross-Tech	Snap-on Diagnostics	TEXA USA
PRODUCT NAME	AirPro	ALLDATA Diagnostics	MaxiSYS MS906TS	Giotto ProLine SPO2	iSCAN3	Farsight Tablet	G-Scan 2	F7SG MasterTab Pro	CJ4R	5160 CarScan Pro	Torque	ET7200	TechPRO VDS1000	MaxME-A	3896 Evolve	VCDS Prokit	ZEUS platform	TXTs with IDC5 SUPERCAR
Unit Features (continued)																		
Hard drive size	64 GB to 1 TB		32 GB	300 MB		256 GB		20 GB			46 GB	64 GB		32 GB		User defined	64 GB	256 GB
Built-in memory or memory on included SD card	4 to 8 GB		32 GB		64 GB	8 GB	16 GB	2 GB	2 GB	Built-in Memory	46 GB	●		2 GB	64 GB	User defined	Built-in solid state drive	8 GB
Multilingual	●		●	●	●		●	●	●	●	●	●			●			●
Internal battery included	●		●			●	●	●			●	●		●	●	User defined	●	●
Length of time to fully charge unit	90 minutes		180 minutes			90 minutes	120 minutes	120 minutes			5 hours	120 minutes		240 minutes	180 minutes	User defined	300 minutes	120 minutes
Length of time unit runs on one charge	5 to 8 hours		8 to 10 hours			8 hours	2 hours	8 hours			8 hours	4 hours		6 to 8 hours	4 hours	User defined	5 hours	8 hours
Unit boot-up time	10 to 12 seconds	15 seconds	20 seconds		52 seconds	15 seconds	2 seconds from standby, 10 seconds from off	8 seconds	10 seconds	10 seconds	7 seconds	25 seconds		49 seconds	60 seconds	User defined	5 seconds instant-on, 1 minute from off	45 seconds
High-resolution color screen	●		●	User defined	●	●	●	●		●	●	●		●	●	User defined	●	●
Touchscreen interface	●	●	●	User defined	●	●	●	●			●	●		●	●	User defined	●	●
Screen size	10.8" to 12.3"	7" +	8"	User defined	10.1"	13.3"	7.7"	10.5"	2.5"	3.5"	10.1"	10.1"		8"	10.1"	User defined	10"	12"
Printable vehicle diagnostic report capabilities	●	●	●	●	●	●	●	●	●	●	●	●		●	●	●	●	●
USB port	●		●	User defined	●	●	●	●	●	●	●	●		●	●	●	●	●
VGA port				User defined			●										Via docking station	●
HDMI port	●		●	User defined		●	●	●				●		Mini HDMI	●		Via docking station	●
Wireless VCI (unit-to-car capabilities)	●	●	●	●		●		●			●	●		●	●	●	●	●
Wi-Fi/Internet capable	●	●	●	●	●	●	●	●			●	●		●	●	●	●	●
Available Tool Add-Ons																		
5-gas analyzer								●										●
TPMS resets	●	●	●	●	●	●	●	●				●			●	●	●	●
TPMS relearns	●	●	●	●	●	●	●	●				●			●	●	●	●
Labscope capability			●			●	●		●									●
J2534 reflash and pass-thru diagnostic capability	●			●	●	●	●	●				●			Yes, with included VCI, separate laptop and OEM software			●
Multimeter							●										●	
Software, Website, Support and Service Features																		
Manufacturer's warranty	1 year	3 years diagnostics hardware	1 year	1 year	1 year	1 year	1 year	1 year	3 years	1 year	1 year	Lifetime	1 year	2 years	Lifetime with continuous diagnostic subscription	1 year	2 years	1 year
Call-in support	904-717-1711	800-859-3282	855-288-3587	480-827-T00L	888-472-2644	877-945-6442	877-263-4897	443-380-0088	915-208-5451	800-544-4124	877-528-6249	800-622-8665	800-468-2321	877-853-3738	888-789-2602	267-638-2300		northamerica@texa.com
Field/Rep support	●	●	●	●	●	●	●	●		●	●	●		●	●		●	●
Pay-as-you-go subscription	●		●							●			●	●				
Length of subscription	Unlimited	3 years	1 year	1 year	1 or 2 years	3 years	1 year	2 years		1 year	1 year	1 year		1, 3, 6 or 12 months	12 months includes all updates	1 year, no charge for renewal	1 or 3 years	1 year
Updatable via the Internet	●	●	●	●	●	●	●	●	●	●	●	●	●	●	●	●	●	●
Frequency of updates, if applicable	Weekly	3 times per year	Weekly	Quarterly	Weekly	Other	3 major updates per year, minor as needed	As needed	Quarterly	Other	Bi-weekly	2 to 3 months	Monthly	Weekly	At least 4 per year	As needed	Continuous	3 to 4 per year
Cost per update	Included with subscription	Free	\$795	\$450 annually	Included with subscription	\$1,999 per year	\$895	\$600	\$170	Free	\$700			Included with subscription	\$795	Free	Available via franchisee	\$595 (optional, no skip fees)
Optional repair solutions for VIN-specific fixes		●	●			●		●		●	Identifix	●		●	●		●	●
Optional diagnostic and repair procedure instructions/videos	●	●	●		●	●				●	●	●		●	●	Free via Ross-Tech Wiki	●	●
Includes the following repair information services:		ALLDATA				Autologic live support				RepairSolutions	Identifix 30-day trial	Bosch wiring diagrams, 60-day trial to Identifix, Integrates with Identifix, Mitchell 1, AllData			Identifix Confirmed Fixes, Code Assist and Symptom Assist	Ross-Tech Forum, Ross-Tech Wiki	SureTrack	TEX@info subscription
Interfaces with the following shop management systems	CCC, Mitchell, Audatex (pending)		Built-in shop management	CCC, UpdatePromise		All Windows 10-based					Access to all cloud/web-based management systems			Interfaces with web-based or Android mobile app-based services				
Most Important Feature	Service utilizes live OEM service information, ADAS calibrations	Seamless integration with ALLDATA	Pre/post-scan	Depth and breadth of coverage	Comprehensive all-makes diagnostic scanner and support platform	Most complete integrated support solution available	Advanced ADAS functions	Most coverage from car to HD truck	Bluetooth allows operation via Android device	Bi-directional testing	Easy, fast and powerful	Enhanced bi-directional coverage with color wiring diagrams	Works with most J2534 VCIs	Flexible subscription - pay only for what you need	Full-system wiring diagrams included with diagnostics subscription	Bi-directional access to the latest VW/Audi vehicles	Intelligent diagnostics provides pre-filtered relevant data and information	Great coverage on European makes and supercars

The most **ADAS** calibration coverage available!



G-scan2

• ADAS Coverages That Count

In partnership with the glass industry for over 2 years, G-scan2 now has more ADAS calibration functions than anyone else!

• A Universal Targeting System

Available now for use with G-scan2 is a Universal ADAS Targeting System that provides \$20,000+ in factory targets at a fraction of the cost!

• Pre-Scan and Post Scan Reports

Pre/Post scans are now standard practice for most OEMs. G-scan2 lets you e-mail or print results wirelessly to a portable Bluetooth printer!

• The Lowest Priced Renewal Fees

Tired of paying excessive fees for subscription renewals? G-scan2 does not 'time out' and renewal fees are the lowest in the industry!

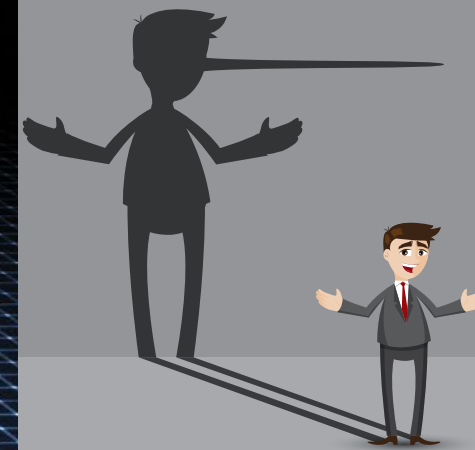
Call today for more information or visit us online.



www.OEMTools.com

87 Eastman St. S. Easton, MA 02375

Circle 256 on card, or enter at "e-inquiry" on VehicleServicePros.com



TIRED OF BROKEN PROMISES?



DON'T LET THEM FOOL YOU!

MOVE ON WORK SMARTER WITH TEXA

- Extended coverage on commercial vehicles: from diesel pickup trucks to class 8 trucks
- Off road coverage available
- No mandatory updates
- No skip penalties for missed releases
- Convenient web-based updates
- Unrivalled support
- High quality manufacturing



TEXA

TEXA USA Inc.

409 Joyce Kilmer Ave. - New Brunswick, NJ 08901
www.texausa.com - northamerica@texa.com

Circle 257 on card, or enter at "e-inquiry" on VehicleServicePros.com

COMPANY NAME	Autel	Bosch	CanDo Diagnostics	Cojali USA Inc	Diesel Laptops	FCAR Tech USA	Launch Tech USA	Mac Tools	MAHLE	NEXIQ Technologies	Noregon	Snap-on Diagnostics	TEXA USA
PRODUCT NAME	MaxiSYS MS906CV	3824 ESI[truck] Expert	HD Pro Tab	Jaltest Diagnostics	Universal Diesel Truck Diagnostic Tool	F7SN TruckTab Pro	HD Add-on Module to PAD II	ET8200-HD	TechPRO VDS1000HD powered by JPRO	Pocket HD	JPRO Professional	Pro-Link Ultra	TXTs with IDC5 TRUCK
Price													
\$501 to \$2,000	●			●					Software only	●	Software only		
\$2,001 to \$4,500				●	●	●	●		Full kit		Software + adapter	●	
\$4,501 to \$10,000		●	●	●							Full kit (incl. laptop)	●	●
More than \$10,000		●		●				●				●	
Enhanced/Proprietary Coverage													
Engine Modules - Heavy Duty													
Caterpillar	●	●	●	●	●	●	●	●	●		●	●	●
Cummins	●	●	●	●	●	●	●	●	●		●	●	●
Detroit Diesel	●	●	●	●	●	●	●	●	●	●	●	●	●
International/Navistar	●	●	●	●	●	●	●	●	●	●	●	●	●
Kenworth/Peterbilt (Paccar)	●	●	●	●	●	●	●	●	●	●	●	●	●
Mack/Volvo	●	●	●	●	●	●	●	●	●	●	●	●	●
Engine Modules - Medium Duty													
Chrysler	●	●	●	●	●	●	●	●	●	●	●	●	●
Cummins	●	●	●	●	●	●	●	●	●	●	●	●	●
Ford	●	●	●	●	●	●	●	●	●	●	●	●	●
GM	●	●	●	●	●	●	●	●	●	●	●	●	●
Hino	●	●	●	●	●	●	●	●	●	●	●	●	●
Isuzu	●	●	●	●	●	●	●	●	●	●	●	●	●
International/Navistar	●	●	●	●	●	●	●	●	●	●	●	●	●
Mitsubishi Fuso Truck of America	●	●	●	●	●	●	●	●	●	●	●	●	●
Kenworth/Peterbilt (Paccar)	●	●	●	●	●	●	●	●	●	●	●	●	●
Brakes													
Bendix	●	●	●	●	●	●	●	●	●	●	●	●	●
Haldex	●	●	●	●	●	●	●	●	●	●	●	●	●
Wabco	●	●	●	●	●	●	●	●	●	●	●	●	●
Transmission													
Allison	●	●	●	●	●	●	●	●	●		●	●	●
Eaton	●	●	●	●	●	●	●	●	●		●	●	●
Scanning Functions													
Reads trouble codes	●	●	●	●	●	●	●	●	●	●	●	●	●
Displays vehicle information/VIN #	●	●	●	●	●	●	●	●	●	●	●	●	●
Displays heavy duty standard codes	●	●	●	●	●	●	●	●	●	●	●	●	●
Displays heavy duty proprietary codes	●	●	●	●	●	●	●	●	●	●	●	●	●
Enhanced Bi-directional Controls													
Anti-lock brake system (ABS)	●	●	●	●		●	●	●	●	●	●	●	●
Automatic transmissions	●	●	●	●		●	●	●	●		●	●	●
Injector cutout	●	●	●	●	2015+ International	●	●	●	●		●	●	●
Injector programming	●	●	●	●		●	●	●	●		●	●	●
Manual/forced regeneration	●	●	●	●	OBD-II	●	●	●	●	●	●	●	●
Replace DPF/ash reset	●	●	●	●		●	●	●	●		●	●	●
SCR/DEF controls	●	●	●	●		●	●	●	●		●	●	●
Trailer brakes (ABS/EBS)	●	●	●	●		●	●	●	●	●	●	●	●
Calibrations for variable vane turbo	Cummins, Detroit Diesel, Navistar, Paccar, Mack/Volvo	Cummins, Detroit Diesel, Navistar, Paccar, Mack/Volvo	Cummins, Detroit Diesel, Navistar, Paccar	Cummins, Detroit Diesel, Navistar, Paccar, Mack/Volvo		Cummins, Detroit Diesel, Navistar, Paccar, Mack/Volvo	Cummins, Detroit Diesel, Navistar, Paccar, Mack/Volvo	Cummins, Detroit Diesel, Navistar, Paccar, Mack/Volvo	Cummins		Where applicable	Cummins, Detroit Diesel, Navistar, Paccar, Mack/Volvo	Cummins, Detroit Diesel, Navistar, Paccar, Mack/Volvo
Live Data Stream - Digital													
Data logging	●	●		●	●	●	●	●	●	●	●	●	●
Guided diagnostics	●	●	●	●		●	●	●	●		●	With Repair>Connect	●
Graphs live data on screen	●	●	●	●	●	●	●	●	●	●	●	●	●
Graphs multiple values on screen simultaneously	●	6	●	8	2	4	15	●	20 +	●	20 +	8	8
Auto identification by VIN #	●	●	●	●	●	●	●	●	●	●	●	●	●
Provides NOX values for diagnosis of emissions related failures	●	●		●	●	●	●	●	●	●		●	●

COMPANY NAME	Autel	Bosch	CanDo Diagnostics	Cojali USA Inc	Diesel Laptops	FCAR Tech USA	Launch Tech USA	Mac Tools	MAHLE	NEXIQ Technologies	Noregon	Snap-on Diagnostics	TEXA USA
PRODUCT NAME	MaxiSYS MS906CV	3824 ESI[truck] Expert	HD Pro Tab	Jaltest Diagnostics	Universal Diesel Truck Diagnostic Tool	F7SN TruckTab Pro	HD Add-on Module to PAD II	ET8200-HD	TechPRO VDS1000HD powered by JPRO	Pocket HD	JPRO Professional	Pro-Link Ultra	TXTs with IDC5 TRUCK
Features on Unit													
Unit type	Tablet	PC tablet or PC-based	Tablet	PC-Based	PC-Based	Tablet	Tablet	Handheld	PC-based	Handheld	PC or tablet	Handheld	Tablet
Operating system	Android	Windows 7, 8 or 10	Android	Windows 10	Windows 10	Android	Android	Windows	Windows 7 or newer	Proprietary	Windows 7 or newer	Windows Mobile	Windows 10
Hard drive size	32 GB	128 GB	32 GB	256 GB	128 GB	20 GB	32 GB	64 GB	320 GB HD/128 GB SSD	8 GB	320GB HD/128 GB SSD	16 GB	256 GB
Built-in memory or memory on included SD card	32 GB	Built-in	64 GB TF	8 GB	128 GB	2 GB	32 GB	●	8 GB +	●	8 GB +	16 GB	8 GB
Multilingual	●	●	●	●	●	●	●	●	●	●	●	●	●
Internal battery included	32 GB	●	●	●	●	●	●	●	●	●	●	●	●
Length of time to fully charge unit	180 minutes	30 minutes	90 minutes	60 minutes	180 minutes	120 minutes	4 hours	120 minutes	●	2 hours	120 minutes	180 minutes	120 minutes
Length of time unit runs on one charge	8 to 10 hours	●	8 to 10 hours	11 hours	4 hours	8 hours	8 hours	4 hours	●	8 hours	8 hours	4 to 6 hours	8 hours
Unit powers off vehicle	●	●	●	●	●	●	●	●	●	●	●	●	●
Unit boot-up time	20 seconds	1 minute	5 seconds	15 seconds	30 seconds	8 seconds	38 seconds	●	●	20 seconds	45 seconds	25 seconds	45 seconds
High-resolution color screen	●	color, not high-res.	●	●	●	●	●	●	●	●	●	●	●
Touchscreen interface	8"	10"	10.1"	14"	●	10.5"	●	10"	●	5"	10"+	8.4"	12"
Print vehicle diagnostic reports capabilities	●	●	●	●	●	●	●	●	●	●	●	●	●
Requires separate laptop or PC	●	optional	●	●	●	●	●	●	●	●	●	●	●
USB port	●	●	●	●	●	●	●	●	●	●	●	●	●
VGA port	●	●	●	●	●	●	●	●	●	●	●	●	●
HDMI port	●	●	●	●	●	●	●	●	●	●	●	●	●
Wireless VCI (unit-to-car capabilities)	●	●	●	●	●	●	●	●	●	●	●	●	●
Wi-Fi/Internet capable	●	●	●	●	●	●	●	●	●	●	●	●	●
Remote diagnostics	●	●	●	●	●	●	●	●	●	●	●	●	●
Available Tool Add-Ons and Cables													
3-pin Deutsch	●	Add-on	●	●	●	●	●	●	●	●	●	●	●
6-pin Deutsch	●	●	●	●	●	●	●	●	●	●	●	●	●
9-pin Deutsch (J1939 type 2)	●	●	●	●	●	●	●	●	●	●	●	●	●
9-pin CAT Deutsch	●	Add-on	●	●	●	●	●	●	●	●	●	●	●
8-pin Volvo	●	●	●	●	●	●	●	●	●	●	●	●	●
14-pin Volvo	●	●	●	●	●	●	●	●	●	●	●	●	●
Automotive 16-pin J1962	●	●	●	●	●	●	●	●	●	●	●	●	●
Mack/Volvo 16-pin J1962	●	●	●	●	●	●	●	●	●	●	●	●	●
Labscope capability	●	●	●	●	●	●	●	●	●	●	●	●	●
Multimeter	●	●	●	●	●	●	●	●	●	●	●	●	●
OBD-II	●	Generic coverage	●	●	●	●	●	●	●	●	●	●	●
Software, Website, Support and Service Features													
Manufacturer's warranty	1 year	1 year	1 year	1 year	1 year laptop, 2 years DrewLinQ	1 year	1 year	1 year	1 year	1 year	3 year laptop, 1 year adapters	1 year	1 year
Call-in support	855-288-3587	800-533-6127	909-226-3611	305-960-7651	888-983-1975 ext. 2	443-380-0088	877-528-6249	800-622-8665	800-468-2321	800-639-6774	U.S.-based, 855-889-5776	800-311-5452	northamerica@texa.com
Field/Rep support	●	●	●	●	●	●	●	●	●	●	●	●	●
Pay-as-you-go subscription	●	●	●	●	●	●	●	●	●	●	●	●	●
Length of subscription	1 year	1 year	2 years	1 year	Lifetime	2 years	1 year	1 year	1 year	1 year	1 year	None required	1 year
Updatable via the Internet	●	●	●	●	●	●	●	●	●	●	●	●	●
Frequency of updates, if applicable	As needed	3 per year	monthly	Quarterly	Quarterly	As needed	Monthly	4 months	3 to 4 per year	As needed	3 to 4 per year	As needed	3 to 4 per year
Cost per update	TBA	Annual subscription includes 3 updates - \$1,500	\$1,000	Included with subscription	\$125 per year (optional)	\$600	\$1,199.99 (does not expire)	●	Included with subscription	Varies	Included with subscription	\$300 to \$600 average	\$795 (optional, no skip fees)
Troubleshooting	●	●	●	●	●	●	●	●	●	●	●	●	●
Optional diagnostic and repair procedure instructions/videos	●	●	●	●	●	●	●	●	●	●	●	●	●
Includes the following repair information services	Available on tablet with purchase of service	Available Bosch troubleshoot/repair suite	truckfaultcodes.com	Jaltest info online	DTC solutions, knowledge base, truckfaultcodes.com	●	1 year warranty	Proprietary wiring diagrams, technical data and DTC lookup	NextStep	●	NextStep (optional)	Michell 1 Repair Connect subscription	TEX@info subscription
Most Important Feature	Affordable diagnostics and services for HD vehicles	North American HD truck coverage, bidirectional controls	Class 4-8 and off-highway in one tool	Intuitive all-makes, all-models, one tool	Universal diagnostic capabilities on trucks and auto	More bidirectional functions and all truck coverage	The best enhanced aftermarket HD coverage available	Industry-leading HD and AG coverage with repair information	Auto-identify all modules for fast/easy diagnosis/repair	All Makes DPF Regen	Fault to fix in a single diagnostic connection	Multiple module connection, view overall vehicle health	Unbeatable hardware/coverage, optional updates, off-highway avail.

COMPANY DIRECTORY

AirPro Diagnostics
airprodiagnostics.com

CAS of New England
oemtools.com

Matco Tools
matcotools.com

ALLDATA
alldata.com

Cojali USA
jaltest.com

NEXIQ Technologies
nexiq.com

Autel
autel.com

Diesel Laptops
diesellaptops.com

Noregon Systems
noregon.com

AutoEnginuity
autoenginuity.com

FCAR Tech USA
fcarusa.com

OTC, Bosch Automotive Service Solutions
otctools.com

Autoland Sciencetech
autolandsciencetech.com

Injectronic
injectronic.com

Ross-Tech
ross-tech.com

Autologic Diagnostics
autologic.com

Innova
innova.com

Snap-on Diagnostics
diagnostics.snapon.com

Automotive Test Solutions
automotivetestsolutions.com

Launch Tech USA
launchtechusa.com

TEXA USA
texausa.com

Bosch Diagnostics
boschdiagnostics.com

Mac Tools
mactools.com

Zurich
zurichdiagnostics.com

CanDo International
candointl.com

MAHLE Service Solutions
servicesolutions.mahle.com

NACE automechanika ATLANTA

August 8 – 10, 2018
Georgia World Congress Center
Atlanta, GA

America's leading international trade fair for the automotive service and collision repair industry targeting trade visitors from the US & Canada

YOUR FUTURE. YOUR BUSINESS. YOUR TIME.

FIND NEW SOLUTIONS

Discover new technology, equipment and processes for increasing efficiency

GET TRAINED BY THE EXPERTS

Learn about the latest tools and diagnostic techniques

EXPAND YOUR NETWORKS

Gain insight into new products & methods of conducting business to become more profitable

REGISTER TODAY!

www.NACEAutomechanika.com/ads6

Stay Connected!

@AutomechanikaUS
@NACEAutomechanika



Do You Work on Light Duty and Medium Duty Trucks?



If you're working on Light Duty trucks such as Ford F250s all the way to Medium Duty trucks, such as Fuso, Hino and UD – the all-new **MLT Pro** is just the scan tool you've been waiting for. It covers Chevy Duramax, Dodge Cummins, Ford Power Stroke and all types of Sprinters. All Class 4-8 trucks and equipment with J1939/1708 protocols are also covered, as is OBDII.

Android Scan Tool for: Read & Clear Codes, View and Graph Live Data, Full Bi-directional Controls along with Special Functions.



CanDo
INTERNATIONAL, INC.

www.candointl.com • 909-Cando-11 (226-3611)

Circle 258 on card, or enter at "e-inquiry" on VehicleServicePros.com

Circle 259 on card, or enter at "e-inquiry" on VehicleServicePros.com



messe frankfurt

INTELLIGENT DIAGNOSTICS
LIVE ON **APOLLO D8™**

*“THE NEW SNAP-ON® APOLLO D8 GIVES
ME THE CONFIDENCE TO DO THINGS
I NEVER IMAGINED.*

*NOW I’M GOING TO PULL THIS RIM
OUT WITH MY BARE HANDS.”*



Now you don't have to be a master tech to perform like one. With Intelligent Diagnostics software, the new Snap-on Apollo D8 saves time by guiding you directly to the answers. And although it offers advanced features that were previously limited to high-end tools, it's easy to operate and simple to learn. So you'll have the confidence to take on anything. Just try not to let it go to your head. Find out more from your Snap-on Franchisee. Or visit diagnostics.snapon.com/APOLLOD8



Snap-on is a trademark, registered in the United States and other countries, of Snap-on Incorporated. All rights reserved. ©Snap-on Incorporated 2018.

Snap-on®

Circle 260 on card, or enter at “e-inquiry” on VehicleServicePros.com