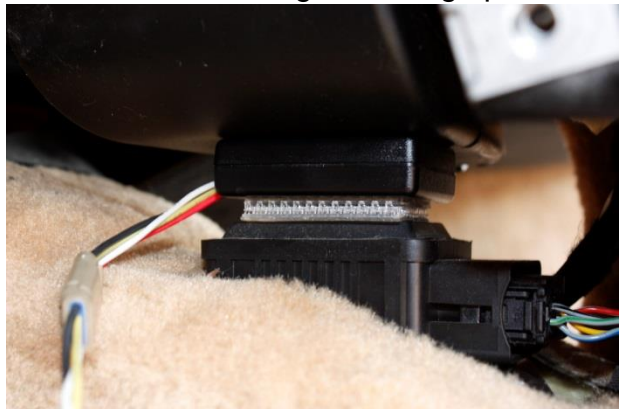
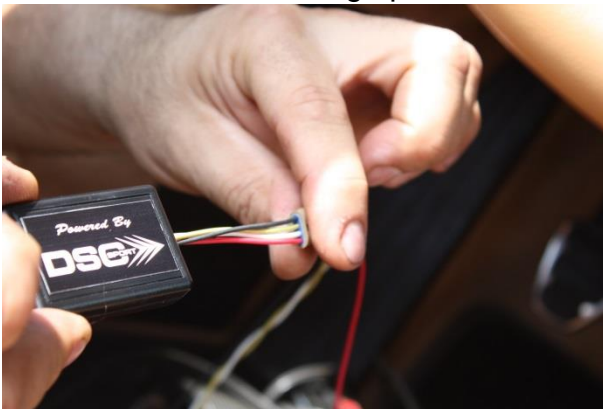


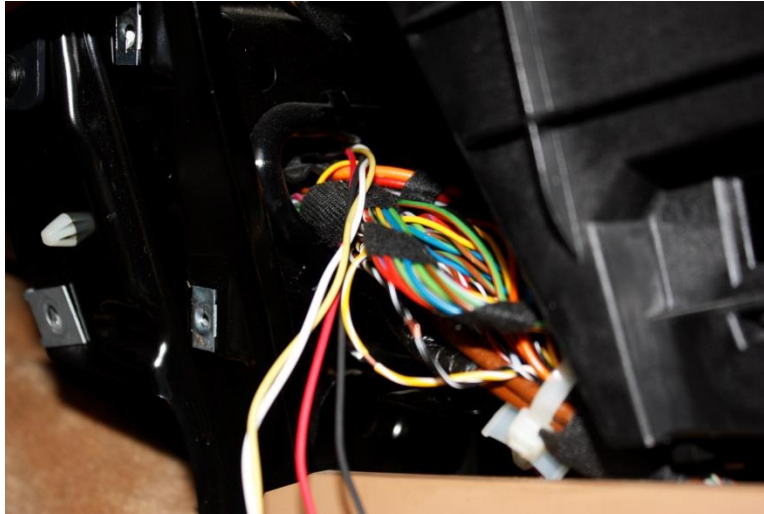
- I. Remove the two panels on the left hand side of the middle console.



- II. Attach the provided wire harness to the DSC accelerometer. Make sure that all corresponding wire colors line up accordingly. Using the 3M fastener provided, attach the accelerometer atop the main wire housing located in the middle console, to the right of the accelerator pedal. Ensure that the chevrons on the DSC logo point to the front of the car, and the logo is facing up.



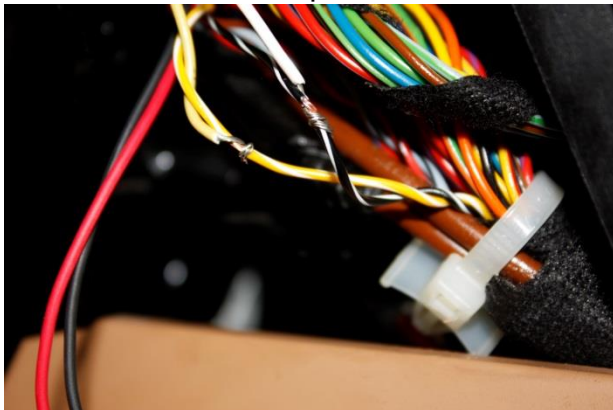
- III. Feed the wires from the harness alongside the factory wiring, as pictured.



- IV. Locate the main wire loom running through the middle console. Remove the wrapping, so that you can separate the wires. Locate the black/yellow pair of wires and untwist.

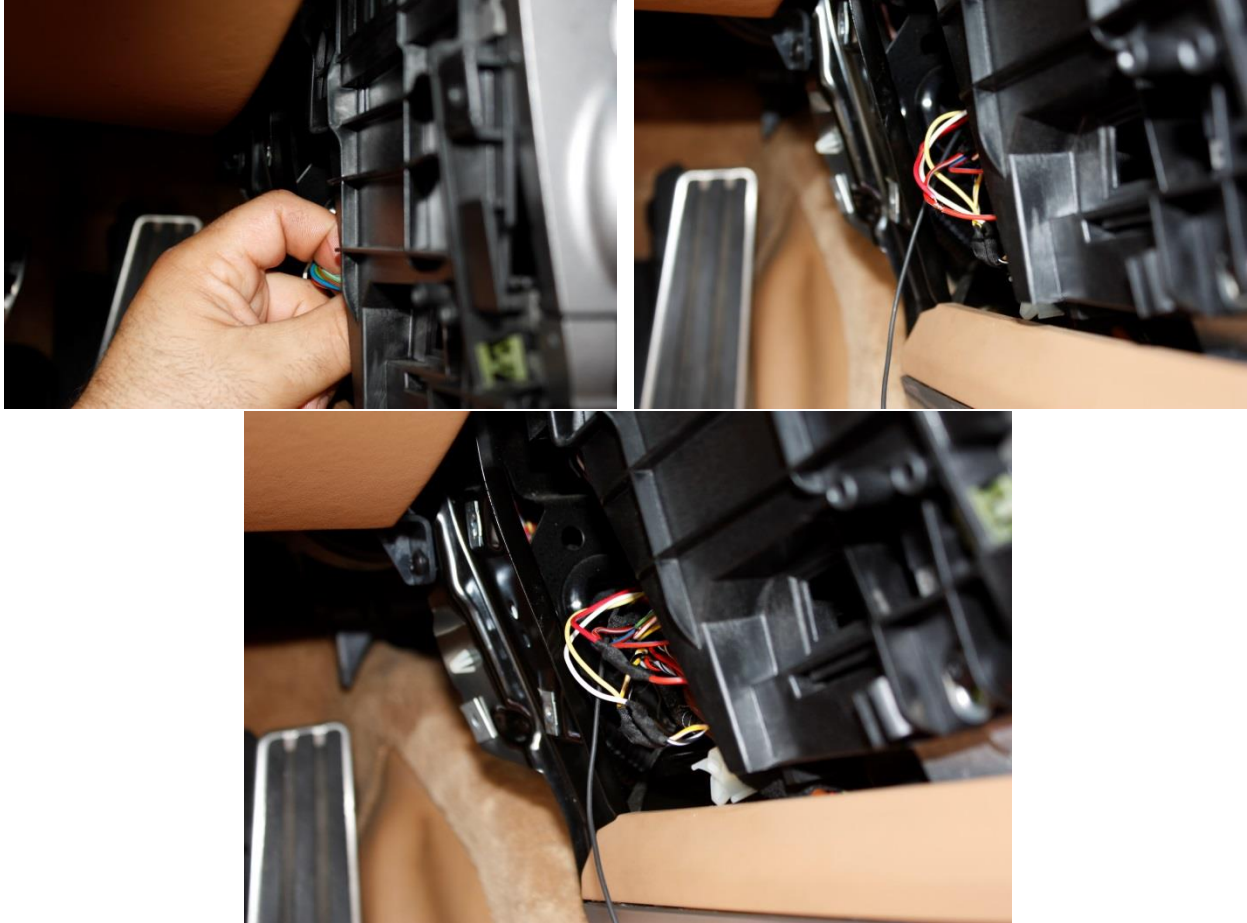


- V. Splice both the yellow and black wires and solder the corresponding wire colors from the accelerometer to them. When finished, wrap the wires with electrical tape.

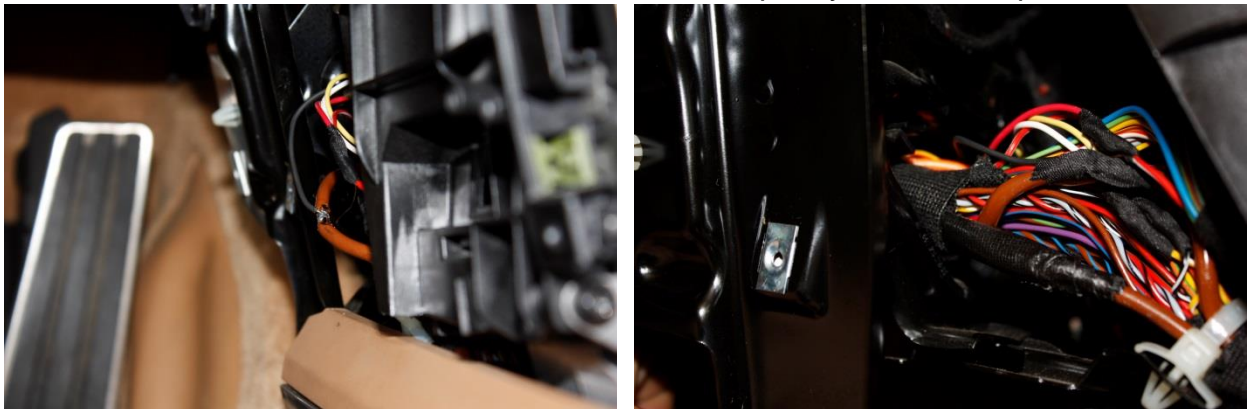




- VI.** Locate the loom containing the red/gray wire (red wire with gray stripe). Unwrap the loom, separate the red/gray wire, splice and solder to the red wire from the accelerometer. When finished, wrap with electrical tape as you did in step V.



- VII.** Lastly, locate the large brown factory wire. Splice and solder to the black wire from the accelerometer. Once finished, wrap as you did in steps V and VI.



**VIII.** Neaten and wrap up any wires and looms. Neatly place back in the center console, and replace the panels from step I.

