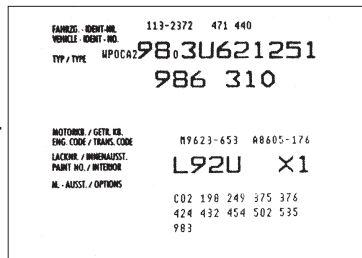


**Optional Equipment – Sports Cars 1999-on,  
Including 1997-on Boxster (986)**

Binder - PPK, Group 16-18

This Bulletin Replaces Bulletin Group 17, #D5, Dated 2-14-03

The following is a list of optional equipment numbers for sports car models since model year 1999, including 1997-on Boxster (986). Included are all M numbers for all models of 911 (996) and Boxster (986). Since 1982, option numbers have been included on vehicle identification labels. Some M numbers are considered standard in the USA and as such will not be shown as optional equipment on the vehicle records. Refer to appropriate order guide for list of standard equipment. Some numbers denote more than one option depending on model and/or year. In some cases several options are grouped together and sold as a package. The packages can also be found in the order guide. Order guides are supplied to your Parts Department by our Sales Department.



← Vehicle Identification Label

|     |   | Boxster (986) | 911 (996) | Boxster (987) | Cayman (987) | 911 (997) | Not For USA |
|-----|---|---------------|-----------|---------------|--------------|-----------|-------------|
| 022 | Black-colored instrument dials ,instrument cluster  |               |           |               |              | X         |             |
| 023 | Silver-colored instrument dials ,instrument cluster |               |           |               |              | X         |             |
| 024 | Version for Greece                                  |               |           | X             | X            | X         | X           |
| 025 | Black -colored instrument dials, stopwatch          |               |           | X             | X            | X         |             |
| 026 | Silver-colored instrument dials, stopwatch          |               |           | X             | X            | X         |             |
| 029 | Standard chassis                                    |               |           | X             | X            | X         |             |
| 030 | Sport type running gear                             |               |           | X             | X            | X         |             |
| 032 | Touring suspension                                  |               |           | X             | X            | X         |             |
| 034 | Version for Italy                                   |               |           | X             | X            | X         | X           |
| 058 | Impact absorbers front and rear                     |               |           | X             | X            | X         |             |
| 061 | Version for Great Britain                           |               |           | X             | X            | X         | X           |
| 062 | Version for Sweden                                  |               |           | X             | X            | X         | X           |
| 063 | Version Luxemburg                                   |               |           | X             | X            | X         | X           |
| 064 | Version for Netherlands                             |               |           | X             | X            | X         | X           |
| 065 | Version for Denmark                                 |               |           | X             | X            | X         | X           |
| 066 | Version for Norway                                  |               |           | X             | X            | X         | X           |
| 067 | Version for Finland                                 |               |           | X             | X            | X         | X           |
| 068 | PAP right hand drive version                        |               |           | X             | X            | X         | X           |
| 069 | Other country version                               |               |           | X             | X            | X         | X           |

|     |  | Boxster (986) | 911 (996) | Boxster (987) | Cayman (987) | 911 (997) | Not For USA |
|-----|--|---------------|-----------|---------------|--------------|-----------|-------------|
| 071 | EU country version                           |               |           | X             | X            | X         | X           |
| 072 | Version for Mexico                           |               |           | X             | X            | X         | X           |
| 073 | Version for Russia                           |               |           | X             | X            | X         | X           |
| 074 | PAP left-hand drive version                  |               |           | X             | X            | X         | X           |
| 098 | Left-hand drive version                      |               |           | X             | X            | X         |             |
| 099 | Right-hand drive version                     |               |           | X             | X            | X         | X           |
| 111 | Version for Austria                          |               |           | X             | X            | X         | X           |
| 113 | Version for Canada                           |               |           | X             | X            | X         | X           |
| 114 | Version for Taiwan                           |               |           | X             | X            | X         | X           |
| 119 | Version for Spain                            |               |           | X             | X            | X         | X           |
| 124 | Version for France                           |               |           | X             | X            | X         | X           |
| 126 | Control and indications in French lettering  |               |           | X             | X            | X         | X           |
| 127 | Control and indications in Swedish           |               |           | X             | X            | X         | X           |
| 130 | Control and indications in English lettering |               |           | X             | X            | X         |             |
| 150 | Operates with leaded gas                     |               |           | X             | X            | X         | X           |
| 159 | Curbed engine 155 kw 211 bhp                 |               |           | X             | X            | X         |             |
| 193 | Version for Japan                            |               |           | X             | X            | X         | X           |
| 194 | Battery 60 ah                                |               |           | X             | X            | X         |             |
| 195 | Battery 70 ah                                |               |           | X             | X            | X         |             |
| 196 | Battery 80 ah                                |               |           | X             | X            | X         |             |
| 197 | Stronger battery                             |               |           | X             | X            | X         |             |
| 198 | Enhanced starter motor (1.7 kw )             |               |           | X             | X            | X         |             |
| 199 | Battery disconnection switch                 |               |           | X             | X            | X         |             |
| 210 | License plate holder version 2               |               |           | X             | X            | X         |             |
| 211 | License plate holder version 3               |               |           | X             | X            | X         |             |
| 215 | Version for Saudi Arabia                     |               |           | X             | X            | X         | X           |
| 218 | License plate holder version 4               |               |           | X             | X            | X         |             |
| 219 | Differential                                 |               |           | X             | X            | X         |             |

|     |   | Boxster (986) | 911 (996) | Boxster (987) | Cayman (987) | 911 (997) | Not For USA |
|-----|---|---------------|-----------|---------------|--------------|-----------|-------------|
| 220 | Locking differential 40 %   |               |           | X             | X            | X         |             |
| 225 | Version for Belgium   |               |           | X             | X            | X         | X           |
| 249 | Tiptronic transmission  |               |           | X             | X            | X         |             |
| 265 | Automatic anti-dazzle interior mirror with rain sensor                          |               |           | X             | X            | X         |             |
| 266 | Automatic anti-dazzle exterior mirror   |               |           | X             | X            | X         |             |
| 267 | Automatically dimmable interior and exterior mirror                             |               |           | X             | X            | X         |             |
| 268 | Rain sensor   |               |           | X             | X            | X         |             |
| 270 | Outside mirror-plan - driver's side, electrically adjustable and heatable       |               |           | X             | X            | X         |             |
| 271 | Outside mirror-aspherical - driver's side, electrically adjustable and heatable |               |           | X             | X            | X         |             |
| 273 | Outside mirror, electrically adjustable and heatable                            |               |           | X             | X            | X         |             |
| 273 | Outside mirror, electrically adjustable and heatable                            |               |           | X             | X            | X         |             |
| 273 | Outside mirror  |               |           | X             | X            | X         |             |
| 274 | Make-up mirror illuminated  |               |           | X             | X            | X         |             |
| 277 | Version for Switzerland   |               |           | X             | X            | X         | X           |
| 288 | Headlamp washer   |               |           | X             | X            | X         |             |
| 301 | Transmission ratio long   |               |           | X             | X            | X         |             |
| 325 | Version for South Africa/New Zealand  |               |           | X             | X            | X         | X           |
| 335 | Automatical safety belt, 3-point, rear  |               |           | X             | X            | X         |             |
| 338 | Rear-wheel drive  |               |           | X             | X            | X         |             |
| 339 | 4-wheel drive   |               |           |               |              | X         |             |
| 342 | Seat heating system, left/right seat  |               |           | X             | X            | X         |             |
| 369 | Series seat, left   |               |           | X             | X            | X         |             |
| 370 | Series seat, right  |               |           | X             | X            | X         |             |
| 375 | Sportseat, backrest shell, left   |               |           | X             | X            | X         |             |
| 376 | Sportseat, backrest shell, right  |               |           | X             | X            | X         |             |
| 377 | Sportseat, backrest shell, left, electrically adjustable                        |               |           | X             | X            | X         |             |
| 378 | Sportseat, backrest shell, right, electrically adjustable                       |               |           | X             | X            | X         |             |
| 392 | 17" Carrera wheel   |               |           | X             | X            |           |             |

|     |   | Boxster (1986) | 911 (1996) | Boxster (1987) | Cayman (1987) | 911 (1997) | Not For USA |
|-----|---|----------------|------------|----------------|---------------|------------|-------------|
| 393 | 17" Boxster wheel (1987 )                   |                |            | X              | X             |            |             |
| 397 | 18" Boxster wheel (1987 )                   |                |            | X              | X             |            |             |
| 398 | 17" Cayman wheel                            |                |            | X              | X             | X          |             |
| 401 | 18" Cayman S wheel                          |                |            | X              | X             |            |             |
| 402 | Carrera wheel 18 "                          |                |            | X              | X             | X          |             |
| 403 | Carrera S wheel 19 "                        |                |            | X              | X             | X          |             |
| 404 | 19" Turbo wheel                             |                |            |                |               | X          |             |
| 405 | Carrera classic wheel 19"                   |                |            | X              | X             | X          |             |
| 406 | Carrera GT wheel 19"/20"                    |                |            | X              | X             | X          |             |
| 407 | SportDesign wheel 19"                       |                |            | X              | X             | X          |             |
| 410 | 18" Turbo wheel                             |                |            |                |               | X          |             |
| 411 | 18" Carrera wheel                           |                |            | X              | X             | X          |             |
| 415 | 18" Turbo-look II wheel                     |                |            |                |               | X          |             |
| 416 | 18" GT3 wheel                               |                |            |                |               | X          |             |
| 418 | 18" Turbo II wheel in GT silver             |                |            | X              | X             | X          |             |
| 424 | CD compartment                              |                |            | X              | X             | X          |             |
| 425 | Rear window wiper                           |                |            |                | X             | X          |             |
| 426 | Without rear window wiper                   |                |            |                | X             | X          |             |
| 431 | Multi-function steering wheel, touch & feel |                |            | X              | X             | X          |             |
| 432 | Steering wheel with tiptronic control       |                |            | X              | X             | X          |             |
| 435 | Sports steering wheel                       |                |            | X              | X             | X          |             |
| 436 | 3-spoke airbag steering wheel               |                |            | X              | X             | X          |             |
| 437 | Comfort seat left, electrically adjustable  |                |            | X              | X             | X          |             |
| 437 | Comfort seat left, electrically adjustable  |                |            | X              | X             | X          |             |
| 438 | Comfort seat right, electrically adjustable |                |            | X              | X             | X          |             |
| 438 | Comfort seat right, electrically adjustable |                |            | X              | X             | X          |             |
| 439 | Electrical roof catch                       |                |            | X              |               | X          |             |
| 440 | Antenna diversity                           |                |            | X              | X             | X          |             |

|     |  | Boxster (986) | 911 (996) | Boxster (987) | Cayman (987) | 911 (997) | Not For USA |
|-----|--|---------------|-----------|---------------|--------------|-----------|-------------|
| 441 | Prepared for radio   |               |           | X             | X            | X         |             |
| 444 | Anti-theft lock, wheel bolts                               |               |           | X             | X            | X         |             |
| 446 | Concave hub cap with colored escutcheon                    |               |           | X             | X            | X         |             |
| 447 | Emergency wheel  |               |           | X             | X            | X         |             |
| 448 | Brake pad, sport version                                   |               |           |               |              | X         |             |
| 450 | Ceramic brake (PCCB)                                       |               |           | X             | X            | X         |             |
| 451 | Multi-function steering wheel, makassar, touch & feel      |               |           | X             | X            | X         |             |
| 451 | Multi-function steering wheel, makassar, touch & feel      |               |           | X             | X            | X         |             |
| 452 | Multi-function steering wheel, sycamore wood, touch & feel |               |           | X             | X            | X         |             |
| 452 | Multi-function steering wheel, sycamore wood, touch & feel |               |           | X             | X            | X         |             |
| 452 | Multi-function steering wheel, sycamore wood, touch & feel |               |           | X             | X            | X         |             |
| 453 | Multi-function steering wheel, carbon, touch & feel        |               |           | X             | X            | X         |             |
| 453 | Multi-function steering wheel, carbon, touch & feel        |               |           | X             | X            | X         |             |
| 454 | Automatic speed control                                    |               |           | X             | X            | X         |             |
| 459 | 3-spoke airbag steering wheel, touch & feel                |               |           | X             | X            | X         |             |
| 460 | Sports steering wheel, touch & feel                        |               |           | X             | X            | X         |             |
| 461 | Rod antenna  |               |           | X             | X            | X         |             |
| 465 | Rear fog light, left                                       |               |           |               |              | X         |             |
| 466 | Rear fog light, right                                      |               |           |               |              | X         |             |
| 475 | PASM electronic damper control                             |               |           | X             | X            | X         |             |
| 476 | Porsche stability management PSM                           |               |           | X             | X            | X         |             |
| 479 | Version for Australia                                      |               |           | X             | X            | X         | X           |
| 480 | 6-speed manual transmission                                |               |           | X             | X            | X         |             |
| 481 | 5-speed manual transmission                                |               |           | X             | X            |           |             |
| 482 | Tire pressure monitoring TPM, 433 mhz                      |               |           | X             | X            | X         |             |
| 483 | 315 mhz TPM, tire pressure monitoring                      |               |           | X             | X            | X         | X           |
| 484 | Version for USA  |               |           | X             | X            | X         |             |
| 488 | Inscriptions in German language                            |               |           | X             | X            | X         | X           |

|     |   | Boxster (986) | 911 (996) | Boxster (987) | Cayman (987) | 911 (997) | Not For USA |
|-----|---|---------------|-----------|---------------|--------------|-----------|-------------|
| 490 | Sound system "ask"  |               |           | X             | X            | X         |             |
| 492 | For left-hand traffic                                     |               |           | X             | X            | X         | X           |
| 498 | Without vehicle type lettering on rear end                |               |           | X             | X            | X         |             |
| 499 | Version for Germany                                       |               |           | X             | X            | X         | X           |
| 501 | Car cover   |               |           | X             | X            | X         |             |
| 509 | Fire extinguisher   |               |           | X             | X            | X         |             |
| 513 | Back-support (lordose) right seat                         |               |           | X             | X            | X         |             |
| 524 | Immobilizer, central locking, 433 mhz                     |               |           | X             | X            | X         | X           |
| 525 | Immobilizer, central locking, 315 mhz                     |               |           | X             | X            | X         |             |
| 532 | Deleted remote control anti-theft device                  |               |           | X             | X            | X         |             |
| 533 | Radio convertible top operation omitted                   |               |           | X             | X            | X         |             |
| 534 | Theft security system 433 mhz                             |               |           | X             | X            | X         | X           |
| 535 | Theft security system 315 mhz                             |               |           | X             | X            | X         |             |
| 536 | Alarm horn and tilt sensor                                |               |           | X             | X            | X         |             |
| 537 | Seating position control for confort seat, left           |               |           | X             | X            | X         |             |
| 538 | Seating position control for confort seat, right          |               |           | X             | X            | X         |             |
| 539 | Mechanical seat-height adjustment left                    |               |           | X             | X            | X         |             |
| 540 | Mechanical seat-height adjustment right                   |               |           | X             | X            | X         |             |
| 544 | Anti-theft protection without infrared monitoring 433 mhz |               |           | X             | X            | X         |             |
| 545 | Anti-theft protection without infrared monitoring 315 mhz |               |           | X             | X            | X         |             |
| 549 | Roof rack system  |               |           | X             | X            | X         |             |
| 550 | Hardtop   |               |           | X             |              | X         |             |
| 551 | Wind deflector  |               |           | X             |              | X         |             |
| 553 | Version for USA, Canada                                   |               |           | X             | X            | X         |             |
| 554 | Front spoiler lip included                                |               |           | X             | X            | X         |             |
| 555 | Black safety belts  |               |           | X             | X            | X         |             |
| 560 | Advanced airbag   |               |           | X             | X            | X         |             |
| 562 | Airbag driver's side and front passenger's side           |               |           | X             | X            | X         |             |

|     |  | Boxster (986) | 911 (996) | Boxster (987) | Cayman (987) | 911 (997) | Not For USA |
|-----|--|---------------|-----------|---------------|--------------|-----------|-------------|
| 563 | Side airbag                                  |               |           | X             | X            | X         |             |
| 566 | Fog lights, white                            |               |           | X             | X            | X         |             |
| 567 | Windshield tinted, upper part darker colored |               |           | X             | X            | X         |             |
| 568 | Windshield without shade band                |               |           | X             | X            | X         |             |
| 571 | Activated charcoal filter                    |               |           | X             | X            | X         |             |
| 572 | Manual air conditioning system               |               |           | X             | X            |           |             |
| 573 | Air conditioner                              |               |           | X             | X            | X         |             |
| 574 | Without air conditioner                      |               |           | X             | X            | X         |             |
| 575 | Luggage compartment cooling system           |               |           | X             | X            | X         |             |
| 580 | Luggage bulkhead luggage guard               |               |           | X             | X            | X         |             |
| 581 | Center console front                         |               |           | X             | X            | X         |             |
| 584 | Storage box on engine cover                  |               |           | X             | X            | X         |             |
| 586 | Back-support (lordose) left seat             |               |           | X             | X            | X         |             |
| 592 | Standard rooflining, fabric                  |               |           |               | X            |           |             |
| 594 | Alcantara rooflining                         |               |           |               | X            |           |             |
| 601 | Xenon light                                  |               |           | X             | X            | X         |             |
| 602 | Third stop light                             |               |           | X             | X            | X         |             |
| 606 | Daytime running lights                       |               |           | X             | X            | X         |             |
| 607 | Garage door opener "Homelink" 315 mhz        |               |           | X             | X            | X         |             |
| 608 | Garage door opener "Homelink" 433 mhz        |               |           | X             | X            | X         | X           |
| 610 | DVD navigation, Europe                       |               |           | X             | X            | X         | X           |
| 611 | DVD navigation, South Africa                 |               |           | X             | X            | X         | X           |
| 612 | DVD navigation, Middle East                  |               |           | X             | X            | X         | X           |
| 613 | DVD navigation, Australia                    |               |           | X             | X            | X         | X           |
| 614 | DVD navigation, Asia-South Pacific           |               |           | X             | X            | X         | X           |
| 615 | DVD navigation system, North America         |               |           | X             | X            | X         |             |
| 616 | DVD navigation, Russia                       |               |           | X             | X            | X         | X           |
| 618 | Preparation of telephone installation        |               |           | X             | X            | X         |             |

|     |  | Boxster (1986) | 911 (1996) | Boxster (1987) | Cayman (1987) | 911 (1997) | Not For USA |
|-----|--|----------------|------------|----------------|---------------|------------|-------------|
| 620 | E-accelerator                                |                |            | X              | X             | X          |             |
| 621 | 12-v socket, passenger's side, footwell      |                |            | X              | X             | X          |             |
| 625 | "KESSY" Porsche entry and drive              |                |            | X              | X             | X          | X           |
| 635 | Parking assistant                            |                |            | X              | X             | X          |             |
| 639 | Sports Chrono package                        |                |            | X              | X             | X          |             |
| 640 | Sports Chrono package plus                   |                |            | X              | X             | X          |             |
| 641 | Electronic logbook                           |                |            | X              | X             | X          |             |
| 650 | Electrical sliding roof                      |                |            | X              |               | X          |             |
| 651 | Electric window opener                       |                |            | X              | X             | X          |             |
| 652 | Without sliding /tilting roof                |                |            | X              | X             | X          |             |
| 657 | Power assisted steering                      |                |            | X              | X             | X          |             |
| 659 | Computer                                     |                |            | X              | X             | X          |             |
| 660 | OBD-2  |                |            | X              | X             | X          |             |
| 661 | Stricter emission-control concept            |                |            | X              | X             | X          |             |
| 664 | ORVR   |                |            | X              | X             | X          |             |
| 665 | PCM2 basic module including radio            |                |            | X              | X             | X          |             |
| 666 | PCM2 telephone (gsm)                         |                |            | X              | X             | X          |             |
| 668 | PCM2 telephone handset                       |                |            | X              | X             | X          |             |
| 670 | PCM2 navigation                              |                |            | X              | X             | X          |             |
| 672 | PCM2 offroad navigation                      |                |            | X              | X             | X          | X           |
| 675 | Without radio preparation (Japan nav system) |                |            | X              | X             | X          |             |
| 680 | BOSE sound package                           |                |            | X              | X             | X          |             |
| 685 | Rear seats, divided                          |                |            |                |               | X          |             |
| 689 | Preparation of CD-changer                    |                |            | X              | X             | X          |             |
| 690 | CD-radio "Porsche online pro"                |                |            | X              | X             | X          |             |
| 692 | CD-changer "Porsche"                         |                |            | X              | X             | X          |             |
| 694 | CD-radio "Porsche CDR 24"                    |                |            | X              | X             |            |             |
| 697 | CD-radio "Porsche CDR 23"                    |                |            | X              | X             |            |             |



|      |   | Boxster (986) | 911 (996) | Boxster (987) | Cayman (987) | 911 (997) | Not For USA |
|------|---|---------------|-----------|---------------|--------------|-----------|-------------|
| 796  | Full leather trim natural leather                                   |               |           | X             | X            | X         |             |
| 798  | Full leather trim special leather                                   |               |           | X             | X            | X         |             |
| 799  | Full leather trim by choice   |               |           | X             | X            | X         |             |
| 801  | Makassar wood package, dark dulled satin                            |               |           | X             | X            | X         |             |
| 802  | Sycamore wood package, light dulled satin                           |               |           | X             | X            | X         |             |
| 803  | Carbon package  |               |           | X             | X            | X         |             |
| 804  | GT carbon exterior package  |               |           |               |              | X         |             |
| 805  | Lifestyle package   |               |           | X             | X            | X         |             |
| 936  | Seat covers rear, leather   |               |           | X             | X            | X         |             |
| 937  | Seat covers rear, leatherette                                       |               |           | X             | X            | X         |             |
| 939  | Seat covers rear, draped leather                                    |               |           | X             | X            | X         |             |
| 946  | Seat covers front, leather/leather leatherette                      |               |           | X             | X            | X         |             |
| 950  | Alcantara seat covers front   |               |           | X             | X            | X         |             |
| 970  | Two-tone interior   |               |           | X             | X            | X         |             |
| 971  | Toro embossed leather   |               |           | X             | X            | X         |             |
| 981  | Leather equipment, without seat covers                              |               |           | X             | X            | X         |             |
| 982  | Seat covers front, draped leather/leather leather                   |               |           | X             | X            | X         |             |
| 982  | Seat covers front, seat covers front, leather                       |               |           | X             | X            | X         |             |
| 983  | Seat covers front, leather  |               |           | X             | X            | X         |             |
| 985  | Seat covers, leather leather/leatherette                            |               |           | X             | X            | X         |             |
| 990  | Seat covers front, cloth/cloth/leatherette                          |               |           | X             | X            | X         |             |
| 991  | Steering wheel airbag module in leather                             |               |           | X             | X            | X         |             |
| 998  | Leather, nature   |               |           | X             | X            | X         |             |
| 999  | Passenger compartment monitoring sensor for leather color of choice |               |           | X             | X            | X         |             |
| IX45 | Instrument dial in interior color                                   |               |           | X             | X            | X         |             |
| IX46 | Tiptronic selector lever in aluminum/leather                        |               |           | X             | X            | X         |             |
| IX47 | Gear lever knob in carbon/leather                                   |               |           | X             | X            | X         |             |
| IX48 | Tiptronic selector lever in carbon/aluminum                         |               |           | X             | X            | X         |             |

|      |   | Boxster (986) | 911 (996) | Boxster (987) | Cayman (987) | 911 (997) | Not For USA |
|------|---|---------------|-----------|---------------|--------------|-----------|-------------|
| IX50 | Powerkit 331 /340 kw                              |               |           |               |              | X         |             |
| IX51 | Powerkit 250 kw                                   |               |           |               |              | X         |             |
| IX54 | Stainless steel tailpipes                         |               |           | X             | X            | X         |             |
| IX58 | Handbrake lever in carbon/leather                 |               |           | X             | X            | X         |             |
| IX65 | Tipt. sel. lever in light burr maple/aluminum     |               |           | X             | X            | X         |             |
| IX66 | Tipt. sel. lever in dark burr maple/aluminum      |               |           | X             | X            | X         |             |
| IX69 | Door entry guards in carbon with logo             |               |           | X             | X            | X         |             |
| IX70 | Door entry guards in stainless steel with logo    |               |           | X             | X            | X         |             |
| IX71 | Instrument dial painted aluminum-look finish      |               |           | X             | X            | X         |             |
| IX72 | Gear lever knob aluminum light burr maple/leather |               |           | X             | X            | X         |             |
| IX73 | Turbo sports suspension                           |               |           |               |              | X         |             |
| IX74 | Sports suspension (exclusive )                    |               |           | X             | X            | X         |             |
| IX75 | Differential lock (exclusive )                    |               |           | X             | X            | X         |             |
| IX76 | Inner door sill guard left/right                  |               |           | X             | X            | X         |             |
| IX91 | Handbrake lever aluminum/light burr maple/leather |               |           | X             | X            | X         |             |
| IX97 | Gear lever knob in aluminum/leather               |               |           | X             | X            | X         |             |
| IX98 | Handbrake lever in aluminum/leather               |               |           | X             | X            | X         |             |
| IX99 | Natural leather                                   |               |           | X             | X            | X         |             |
| IXAA | Aerokit cup                                       |               |           |               |              | X         |             |
| IXAB | Spyder rear in body color                         |               |           |               |              |           | X           |
| IXAF | Turbo Aerokit                                     |               |           |               |              | X         |             |
| IXAG | Carrera rear spoiler                              |               |           |               |              | X         |             |
| IXAG | Carrera rear spoiler                              |               |           |               |              | X         |             |
| IXAH | Carrera 4S Aerokit                                |               |           | X             | X            | X         |             |
| IXAJ | Painted sill covers                               |               |           |               |              | X         |             |
| IXCA | Dashboard trim strip (3 part ) sports seats       |               |           | X             | X            | X         |             |
| IXCB | Instrument surround sports seats                  |               |           | X             | X            | X         |             |
| IXCC | Side air vents sports seats                       |               |           | X             | X            | X         |             |

|       |  | Boxster (1986) | 911 (1996) | Boxster (1987) | Cayman (1987) | 911 (1997) | Not For USA |
|-------|--|----------------|------------|----------------|---------------|------------|-------------|
| IXCD  | Center air vent bracket sports seats             |                |            | X              | X             | X          |             |
| IXCE  | Rear center console sports seats                 |                |            | X              | X             | X          |             |
| IXCG  | Sports seat backrest in aluminum-look finish     |                |            | X              | X             | X          |             |
| IXCG  | Sports seat backrest in aluminum-look finish     |                |            | X              | X             | X          |             |
| IXCH  | Side/center air vent slats sport seats           |                |            | X              | X             | X          |             |
| IXCK  | Rear center console in galvano silver            |                |            | X              | X             | X          |             |
| IXCL  | Instrument surround in galvano silver            |                |            | X              | X             | X          |             |
| IXCM  | Roll-over bar in galvano silver                  |                |            | X              |               |            |             |
| IXCN  | Side air vents in aluminum-look finish (1997)    |                |            |                |               | X          |             |
| IXCY  | Center air vent in aluminum-look finish          |                |            | X              | X             | X          |             |
| IXCZ  | Switch travel shortening                         |                |            | X              | X             | X          |             |
| IXD 9 | Wheel painted in body color                      |                |            | X              | X             | X          |             |
| IXE 8 | Gear lever knob aluminum/dark burr maple/leather |                |            | X              | X             | X          |             |
| IXE 9 | Handbrake lever aluminum/dark burr maple/leather |                |            | X              | X             | X          |             |
| IXE8  | Gear lever knob aluminum/dark burr maple/leather |                |            | X              | X             | X          |             |
| IXE9  | Handbrake lever aluminum/dark burr maple/leather |                |            | X              | X             | X          |             |
| IXEA  | Passive handset in leather                       |                |            | X              | X             | X          |             |
| IXFD  | Instrument dials in sand beige                   |                |            | X              | X             | X          |             |
| IXFE  | Instrument dials in terrakotta                   |                |            | X              | X             | X          |             |
| IXFF  | Instrument dials in brown natural                |                |            | X              | X             | X          |             |
| IXFG  | Instrument dials in guards red                   |                |            | X              | X             | X          |             |
| IXFH  | Instrument dials in speed yellow                 |                |            | X              | X             | X          |             |
| IXFJ  | Instrument dials in Carrara white                |                |            | X              | X             | X          |             |
| IXJ4  | Leather cover for ignition lock surround         |                |            | X              | X             | X          |             |
| IXJB  | Rear section of center console in arctic silver  |                |            | X              | X             | X          |             |
| IXJL  | Macassar side air vent                           |                |            | X              | X             | X          |             |
| IXJM  | Sycamore side air vent                           |                |            | X              | X             | X          |             |
| IXJN  | Macassar center air vent                         |                |            | X              | X             | X          |             |

|      |  | Boxster (986) | 911 (996) | Boxster (987) | Cayman (987) | 911 (997) | Not For USA |
|------|--|---------------|-----------|---------------|--------------|-----------|-------------|
| IXJP | Sycamore center air vent                               |               |           | X             | X            | X         |             |
| IXJR | Macassar windshield defroster panel                    |               |           | X             | X            | X         |             |
| IXJS | Sycamore windshield defroster panel                    |               |           | X             | X            | X         |             |
| IXJT | Macassar rear center console                           |               |           | X             | X            | X         |             |
| IXJU | Sycamore rear center console                           |               |           | X             | X            | X         |             |
| IXKB | Side air vent in light burr maple                      |               |           | X             | X            | X         |             |
| IXKC | Side air vent in dark burr maple                       |               |           | X             | X            | X         |             |
| IXKD | Side air vent in carbon                                |               |           | X             | X            | X         |             |
| IXKE | Side air vent in arctic silver                         |               |           | X             | X            | X         |             |
| IXKG | Windshield defroster panel in light burr maple/leather |               |           | X             | X            | X         |             |
| IXKH | Windshield defroster panel in dark burr maple/leather  |               |           | X             | X            | X         |             |
| IXKJ | Windshield defroster panel in carbon/leather           |               |           | X             | X            | X         |             |
| IXKL | Leather speaker covers                                 |               |           | X             | X            | X         |             |
| IXKM | Speaker covers in light burr maple                     |               |           | X             | X            | X         |             |
| IXKN | Speaker covers in dark burr maple                      |               |           | X             | X            | X         |             |
| IXKP | Carbon speaker covers                                  |               |           | X             | X            | X         |             |
| IXKR | Center air vent bracket in light burr maple            |               |           | X             | X            | X         |             |
| IXKS | Center air vent bracket in dark burr maple             |               |           | X             | X            | X         |             |
| IXKX | Instrument surround in arctic silver                   |               |           | X             | X            | X         |             |
| IXLA | Boxster tailpipe                                       |               |           | X             |              |           |             |
| IXLF | Sports exhaust system                                  |               |           | X             | X            | X         |             |
| IXMA | Rooflining in leather                                  |               |           |               | X            | X         |             |
| IXME | Rear section of center console painted                 |               |           | X             | X            | X         |             |
| IXMF | Front center console in 2 storage bins, leather        |               |           | X             | X            | X         |             |
| IXMJ | Rear section of center console in carbon               |               |           | X             | X            | X         |             |
| IXMK | Rolover bar in exterior color                          |               |           | X             |              |           |             |
| IXML | Rear center console in light burr maple                |               |           | X             | X            | X         |             |
| IXMP | Leather sun visor,2 lit make-up mirrors illuminated    |               |           | X             | X            | X         |             |

|      |  | Boxster (986) | 911 (996) | Boxster (987) | Cayman (987) | 911 (997) | Not For USA |
|------|--|---------------|-----------|---------------|--------------|-----------|-------------|
| IXMR | Sun visor in leather, 2 illuminated vanity mirror        |               |           | X             | X            | X         |             |
| IXMY | Roll-over bar in arctic silver                           |               |           | X             |              |           |             |
| IXMZ | Rear section of center console in leather                |               |           | X             | X            | X         |             |
| IXN3 | Dashboard side air vent in leather                       |               |           | X             | X            | X         |             |
| IXNB | Rear center console in dark burr maple                   |               |           | X             | X            | X         |             |
| IXNG | Instrument surround in leather                           |               |           | X             | X            | X         |             |
| IXNH | Side vent left/right defroster trim in leather           |               |           | X             | X            | X         |             |
| IXNN | Center air vent bracket in leather                       |               |           | X             | X            | X         |             |
| IXNR | Carbon center air vent bracket                           |               |           | X             | X            | X         |             |
| IXNS | Leather steering column trim, 4-part                     |               |           | X             | X            | X         |             |
| IXNU | Leather trim strip (dashboard)                           |               |           | X             | X            | X         |             |
| IXNV | Trim strip dashboard) in light burr maple                |               |           | X             | X            | X         |             |
| IXNW | Trim strip dashboard) in dark burr maple                 |               |           | X             | X            | X         |             |
| IXNX | Carbon trim strip (dashboard)                            |               |           | X             | X            | X         |             |
| IXNY | Trim strip in arctic silver                              |               |           | X             | X            | X         |             |
| IXPA | 3-spoke sports steering wheel in leather interior color  |               |           | X             | X            | X         |             |
| IXPB | 3-spoke sports steering wheel, light burr maple, leather |               |           | X             | X            | X         |             |
| IXPB | 3-spoke sports steering wheel, light burr maple, leather |               |           | X             | X            | X         |             |
| IXPC | 3-spoke sports steering wheel, dark burr maple, leather  |               |           | X             | X            | X         |             |
| IXPC | 3-spoke sports steering wheel, dark burr maple, leather  |               |           | X             | X            | X         |             |
| IXPD | 3-spoke sports steering wheel, carbon/leather            |               |           | X             | X            | X         |             |
| IXPG | 3-spoke sports steering wheel, sports seats              |               |           | X             | X            | X         |             |
| IXPP | Loudspeaker finisher on switch panel in interior color   |               |           | X             | X            | X         |             |
| IXPV | Multi-function steering wheel rim, galvano silver        |               |           | X             | X            | X         |             |
| IXPW | Instrument surround in light burr maple                  |               |           | X             | X            | X         |             |
| IXPX | Instrument surround in dark burr maple dark              |               |           | X             | X            | X         |             |
| IXPY | Carbon instrument surround                               |               |           | X             | X            | X         |             |
| IXRA | 17" Sport Classic wheel                                  |               |           | X             |              |           |             |

|      |  | Boxster (1986) | 911 (1996) | Boxster (1987) | Cayman (1987) | 911 (1997) | Not For USA |
|------|--|----------------|------------|----------------|---------------|------------|-------------|
| IXRB | 18" Sport Classic II wheel             |                |            | X              |               |            |             |
| IXRC | 18" Sport Techno wheel                 |                |            | X              |               |            |             |
| IXRL | 18" SportDesign wheel                  |                |            | X              | X             | X          |             |
| IXRN | 17-mm spacers, rear                    |                |            | X              | X             | X          |             |
| IXRP | 5-mm spacers, front rear               |                |            | X              | X             | X          |             |
| IXRR | 19" Carrera Sport wheel                |                |            | X              | X             | X          |             |
| IXSA | Painted sports seat backrest           |                |            | X              | X             | X          |             |
| IXSB | Leather sports seat backrest           |                |            | X              | X             | X          |             |
| IXSC | Porsche crest embossed in headrest     |                |            | X              | X             | X          |             |
| IXSD | Front seat controls in leather         |                |            | X              | X             | X          |             |
| IXSE | Bucket seat, left                      |                |            | X              | X             | X          |             |
| IXSF | Bucket seat, right                     |                |            | X              | X             | X          |             |
| IXSG | racing bucket seat, left               |                |            | X              | X             | X          |             |
| IXSH | Silver safety belts                    |                |            | X              | X             | X          |             |
| IXSJ | 6-point harness                        |                |            | X              | X             | X          |             |
| IXSL | 6-point safety catch                   |                |            | X              | X             | X          |             |
| IXSM | Racing safety cage                     |                |            |                |               | X          |             |
| IXSN | Omission of rear seats                 |                |            |                |               | X          |             |
| IXSR | Carbon back for bucket seat, right     |                |            | X              | X             | X          |             |
| IXSS | Carbon back for bucket seat, left      |                |            | X              | X             | X          |             |
| IXSU | Upholstered seat                       |                |            | X              | X             | X          |             |
| IXSW | Maritime blue safety belts             |                |            | X              | X             | X          |             |
| IXSX | Seat belts in guards red               |                |            | X              | X             | X          |             |
| IXSY | Seat belts in speed yellow             |                |            | X              | X             | X          |             |
| IXTC | Door features in leather               |                |            | X              | X             | X          |             |
| IXTE | Door features in carbon/leather        |                |            | X              | X             | X          |             |
| IXTF | Door features in arctic silver/leather |                |            | X              | X             | X          |             |
| IXTG | Inner door sills in leather            |                |            | X              | X             | X          |             |

|       |  | Boxster (1986) | 911 (1996) | Boxster (1987) | Cayman (1987) | 911 (1997) | Not For USA |
|-------|--|----------------|------------|----------------|---------------|------------|-------------|
| IXTJ  | Door panel parts in light burr maple                                     |                |            | X              | X             | X          |             |
| IXTK  | Door panel parts in dark burr maple                                      |                |            | X              | X             | X          |             |
| IXTL  | Door features in carbon  |                |            | X              | X             | X          |             |
| IXTR  | Door panel parts in aluminum-look finish                                 |                |            | X              | X             | X          |             |
| IXTT  | Macassar door panel parts  |                |            | X              | X             | X          |             |
| IXTU  | Sycamore door panel parts  |                |            | X              | X             | X          |             |
| IXTV  | Leather door panel parts   |                |            | X              | X             | X          |             |
| IXTW  | Door panel parts in galvano silver                                       |                |            | X              | X             | X          |             |
| IXV 1 | Defroster trim in leather  |                |            | X              | X             | X          |             |
| IXVM  | Leather center air vent  |                |            | X              | X             | X          |             |
| IXVP  | Trim strip including cupholder cover in leather                          |                |            | X              | X             | X          |             |
| IXVR  | Side/center air vent in leather  |                |            | X              | X             | X          |             |
| IXX 1 | Floor mats, logo, leather border   |                |            | X              | X             | X          |             |
| IXX 2 | Illuminated footwell   |                |            | X              | X             | X          |             |
| IXXZ  | Footrest   |                |            | X              | X             | X          |             |
| IXY5  | Tiptronic gear selector gate in leather                                  |                |            | X              | X             | X          |             |
| IXZB  | Carbon center air vent   |                |            | X              | X             | X          |             |
| IXZD  | Interior light surround in leather                                       |                |            | X              | X             | X          |             |
| M 004 | GT3 RS (street)  |                | X          |                |               |            |             |
| M 008 | 986 S 3 2 liter displacement   | X              |            |                |               |            |             |
| M 009 | 986 2,5 liter displacement -> MY 1999, 2,7 liter displacement -> MY 2000 | X              |            |                |               |            |             |
| M 010 | Classic package  | X              | X          |                |               |            |             |
| M 011 | Trend package  | X              | X          |                |               |            |             |
| M 012 | Sport Design package   | X              | X          |                |               |            |             |
| M 013 | Sport Technik package  | X              | X          |                |               |            |             |
| M 014 | Sport Package 996  | X              | X          |                |               |            |             |
| M 016 | Standard Package   | X              | X          |                |               |            |             |
| M 020 | Speedometer with two scales mph-kmh                                      | X              | X          |                |               |            |             |

|       |  | Boxster (1986) | 911 (1996) | Boxster (1987) | Cayman (1987) | 911 (1997) | Not For USA |
|-------|--|----------------|------------|----------------|---------------|------------|-------------|
| M 024 | Version for Greece                           | X              | X          |                |               |            | X           |
| M 030 | Sport-type running gear                      | X              | X          |                |               |            |             |
| M 032 | Touring suspension                           |                | X          |                |               |            |             |
| M 034 | Version for Italy                            | X              | X          |                |               |            | X           |
| M 058 | Impact absorbers front and rear              | X              | X          |                |               |            |             |
| M 061 | Version for Great Britain                    | X              | X          |                |               |            | X           |
| M 062 | Version for Sweden                           | X              | X          |                |               |            | X           |
| M 063 | Version Luxemburg                            | X              | X          |                |               |            | X           |
| M 064 | Version for Netherlands                      | X              | X          |                |               |            | X           |
| M 065 | Version for Denmark                          | X              | X          |                |               |            | X           |
| M 066 | Version for Norway                           | X              | X          |                |               |            | X           |
| M 067 | Version for Finland                          | X              | X          |                |               |            | X           |
| M 068 | Version for Thailand                         | X              | X          |                |               |            | X           |
| M 069 | Other country version                        | X              | X          |                |               |            | X           |
| M 071 | EU country version                           | X              | X          |                |               |            | X           |
| M 072 | Version for Mexico                           | X              | X          |                |               |            | X           |
| M 073 | Version for Russia                           | X              | X          |                |               |            | X           |
| M 091 | Special model - 50 years Spyder              | X              |            |                |               |            |             |
| M 094 | Special model Millennium                     |                | X          |                |               |            |             |
| M 095 | Special model - 40 years 911                 |                | X          |                |               |            |             |
| M 111 | Version for Austria                          | X              | X          |                |               |            | X           |
| M 113 | Version for Canada                           | X              | X          |                |               |            | X           |
| M 114 | Version for Taiwan                           | X              | X          |                |               |            | X           |
| M 119 | Version for Spain                            | X              | X          |                |               |            | X           |
| M 124 | Version for France                           | X              | X          |                |               |            | X           |
| M 126 | Control and indications in French lettering  | X              | X          |                |               |            | X           |
| M 127 | Control and indications in Swedish           | X              | X          |                |               |            | X           |
| M 130 | Control and indications in English lettering | X              | X          |                |               |            |             |



|       |   | Boxster (1986) | 911 (1996) | Boxster (1987) | Cayman (1987) | 911 (1997) | Not For USA |
|-------|---|----------------|------------|----------------|---------------|------------|-------------|
| M 139 | Seat heating system, left seat  | X              | X          |                |               |            |             |
| M 150 | Operates with leaded gas  | X              | X          |                |               |            | X           |
| M 191 | Wheel spokes in sealgrey-metallic   | X              | X          |                |               |            |             |
| M 193 | Version for Japan   | X              | X          |                |               |            | X           |
| M 197 | Stronger battery  | X              | X          |                |               |            |             |
| M 198 | Starter 1,7 kw  | X              | X          |                |               |            |             |
| M 215 | Version for Saudi Arabia  | X              | X          |                |               |            | X           |
| M 219 | Differential  | X              | X          |                |               |            |             |
| M 220 | Locking differential 40 %   | X              | X          |                |               |            |             |
| M 222 | Traction control system   | X              | X          |                |               |            |             |
| M 224 | Automatic limited slip differential   | X              | X          |                |               |            |             |
| M 225 | Version for belgium   | X              | X          |                |               |            | X           |
| M 249 | Tiptronic transmission  | X              | X          |                |               |            |             |
| M 265 | Automatic anti-dazzle interior mirror with rain sensor                        | X              | X          |                |               |            |             |
| M 266 | Automatic anti-dazzle exterior mirror   | X              | X          |                |               |            |             |
| M 270 | Outside mirror-plan-driver's side, electrically adjustable and heatable       | X              | X          |                |               |            |             |
| M 271 | Outside mirror-aspherical-drive's side , electrically adjustable and heatable | X              | X          |                |               |            |             |
| M 272 | Outside mirror, manually adjustable   | X              | X          |                |               |            |             |
| M 273 | Outside mirror, electrically adjustable and heatable                          | X              | X          |                |               |            |             |
| M 273 | Outside mirror, electrically adjustable and heatable                          | X              | X          |                |               |            |             |
| M 274 | Make-up mirror illuminated  | X              | X          |                |               |            |             |
| M 277 | Version for Switzerland   | X              | X          |                |               |            | X           |
| M 288 | Headlamp washer   | X              | X          |                |               |            |             |
| M 320 | Radio "Porsche CR 11"   | X              | X          |                |               |            | X           |
| M 321 | Radio "Porsche CR 22"   | X              | X          |                |               |            | X           |
| M 322 | Radio "Porsche CR 220"  | X              | X          |                |               |            |             |
| M 325 | Version for South Africa/New Zealand  | X              | X          |                |               |            | X           |
| M 326 | Radio "Porsche CR 21"   | X              | X          |                |               |            | X           |

|       |  | Boxster (986) | 911 (996) | Boxster (987) | Cayman (987) | 911 (997) | Not For USA |
|-------|--|---------------|-----------|---------------|--------------|-----------|-------------|
| M 327 | Radio "Porsche CR 2200"                | X             | X         |               |              |           | X           |
| M 329 | Radio "Porsche CR 210"                 | X             | X         |               |              |           |             |
| M 330 | Radio "Porsche CR 31"                  | X             | X         |               |              |           | X           |
| M 335 | Automatical safety belt, 3-point, rear |               | X         |               |              |           |             |
| M 338 | Rear-wheel drive                       | X             | X         |               |              |           |             |
| M 339 | 4-wheel drive                          |               | X         |               |              |           |             |
| M 340 | Seat heating system, right seat        | X             | X         |               |              |           |             |
| M 342 | Seat heating system, left/right seat   | X             | X         |               |              |           |             |
| M 369 | Series seat, left                      | X             | X         |               |              |           |             |
| M 370 | Series seat, right                     | X             | X         |               |              |           |             |
| M 375 | Sportseat, backrest shell, left        | X             | X         |               |              |           |             |
| M 376 | Sportseat, backrest shell, right       | X             | X         |               |              |           |             |
| M 392 | 17" Carrera wheel                      | X             | X         |               |              |           |             |
| M 394 | Boxster wheel 17"                      | X             | X         |               |              |           |             |
| M 395 | Cast wheel,16"                         | X             |           |               |              |           |             |
| M 396 | Cast wheel,17"                         | X             | X         |               |              |           |             |
| M 399 | 17" Carrera 4 wheel                    |               | X         |               |              |           |             |
| M 400 | Boxster S wheel 17"                    | X             |           |               |              |           |             |
| M 408 | 18" Techno wheel                       | X             | X         |               |              |           |             |
| M 411 | 18" Carrera wheel                      | X             | X         |               |              |           |             |
| M 413 | 18" Turbo Look wheel                   | X             | X         |               |              |           |             |
| M 414 | 18" Turbo Look wheel high gloss finish | X             | X         |               |              |           |             |
| M 415 | 18" Monobloc wheel top                 | X             | X         |               |              |           |             |
| M 417 | 18" Carrera wheel, polished            | X             | X         |               |              |           |             |
| M 421 | Front cassette compartment             | X             | X         |               |              |           |             |
| M 422 | Rear cassette compartment              | X             | X         |               |              |           |             |
| M 424 | CD compartment                         | X             | X         |               |              |           |             |
| M 425 | Rear window wiper                      |               | X         |               |              |           |             |

|       |   | Boxster (986) | 911 (996) | Boxster (987) | Cayman (987) | 911 (997) | Not For USA |
|-------|---|---------------|-----------|---------------|--------------|-----------|-------------|
| M 431 | 4-spokes steering wheel (leather), diameter 363 mm                      | X             | X         |               |              |           |             |
| M 432 | Steering wheel with Tiptronic control                                   | X             | X         |               |              |           |             |
| M 436 | 3-spoke airbag steering wheel   | X             | X         |               |              |           |             |
| M 437 | Comfort seat left, electrically adjustable                              | X             | X         |               |              |           |             |
| M 438 | Comfort seat right, electrically adjustable                             | X             | X         |               |              |           |             |
| M 438 | Comfort seat right, electrically adjustable                             | X             | X         |               |              |           |             |
| M 439 | Electrical roof catch   | X             | X         |               |              |           |             |
| M 440 | Manual antenna, 4 loudspeakers -> MY 2002, MY 2003 -> antenna diversity | X             | X         |               |              |           |             |
| M 441 | Prepared for radio  | X             | X         |               |              |           |             |
| M 446 | Concave hub cap with colored escutcheon                                 | X             | X         |               |              |           |             |
| M 450 | Ceramic brake (PCCB)  | X             | X         |               |              |           |             |
| M 454 | Automatic speed control   | X             | X         |               |              |           |             |
| M 465 | Rear foglamp, left  | X             | X         |               |              |           |             |
| M 466 | Rear foglamp, right   | X             | X         |               |              |           |             |
| M 476 | Porsche stability management PSM)                                       | X             | X         |               |              |           |             |
| M 479 | Version for Australia   | X             | X         |               |              |           | X           |
| M 480 | 6-speed manual transmission   | X             | X         |               |              |           |             |
| M 481 | 5-speed manual transmission   | X             |           |               |              |           |             |
| M 484 | Version for USA   | X             | X         |               |              |           |             |
| M 488 | Inscriptions in German language   | X             | X         |               |              |           | X           |
| M 490 | MY 01 sound system, MY 02 - sound system Harmann analog                 | X             | X         |               |              |           |             |
| M 492 | For left-hand traffic   | X             | X         |               |              |           | X           |
| M 498 | Without vehicle type lettering on rear end                              | X             | X         |               |              |           |             |
| M 499 | Version for Germany   | X             | X         |               |              |           | X           |
| M 509 | Fire extinguisher   | X             | X         |               |              |           |             |
| M 513 | Back-support (lordose) right seat                                       | X             | X         |               |              |           |             |
| M 524 | Anti-drive-off feature, 433 mhz   | X             | X         |               |              |           | X           |
| M 525 | Anti-drive-off feature, 315 mhz   | X             | X         |               |              |           |             |

|       |  | Boxster (986) | 911 (996) | Boxster (987) | Cayman (987) | 911 (997) | Not For USA |
|-------|--|---------------|-----------|---------------|--------------|-----------|-------------|
| M 531 | Anti-drive-off feature, central locking system   | X             | X         |               |              |           |             |
| M 532 | Deleted remote control anti-theft device         | X             | X         |               |              |           |             |
| M 533 | Remote convertible top operation omitted         | X             | X         |               |              |           |             |
| M 534 | Theft security system                            | X             | X         |               |              |           |             |
| M 535 | Anti-theft lock 315 mhz                          | X             | X         |               |              |           |             |
| M 536 | Alarm horn and tilt sensor                       | X             | X         |               |              |           |             |
| M 537 | Seating position control for confort seat, left  | X             | X         |               |              |           |             |
| M 537 | Seating position control for confort seat, left  | X             | X         |               |              |           |             |
| M 538 | Seating position control for confort seat, right | X             | X         |               |              |           |             |
| M 539 | Mechanical seat-height adjustment left           | X             | X         |               |              |           |             |
| M 540 | Mechanical seat-height adjustment right          | X             | X         |               |              |           |             |
| M 549 | Roof rack system                                 | X             | X         |               |              |           |             |
| M 550 | Hardtop  | X             | X         |               |              |           |             |
| M 551 | Wind deflector                                   | X             | X         |               |              |           |             |
| M 553 | Version for USA, Canada                          | X             | X         |               |              |           |             |
| M 562 | Airbag driver's side and front passenger's side  | X             | X         |               |              |           |             |
| M 563 | Side airbag                                      | X             | X         |               |              |           |             |
| M 566 | Fog lights,white                                 | X             | X         |               |              |           |             |
| M 567 | Windshield tinted, upper part darker colored     | X             | X         |               |              |           |             |
| M 571 | Activated charcoal filter                        | X             | X         |               |              |           |             |
| M 573 | Air conditioner                                  | X             | X         |               |              |           |             |
| M 574 | Without air conditioner                          | X             | X         |               |              |           |             |
| M 580 | Non-smoker's package                             | X             | X         |               |              |           |             |
| M 581 | Center console front                             | X             | X         |               |              |           |             |
| M 582 | Storage pocket (motor cover)                     | X             | X         |               |              |           |             |
| M 586 | Back-support (lordose) left seat                 | X             | X         |               |              |           |             |
| M 590 | Power lid locking                                | X             | X         |               |              |           |             |
| M 601 | Headlamp litronic                                | X             | X         |               |              |           |             |

|       |   | Boxster (986) | 911 (1996) | Boxster (987) | Cayman (987) | 911 (1997) | Not For USA |
|-------|---|---------------|------------|---------------|--------------|------------|-------------|
| M 602 | Third brake light   | X             | X          |               |              |            |             |
| M 605 | Headlight vertical aim control                              | X             | X          |               |              |            |             |
| M 606 | Daytime running lamp  | X             | X          |               |              |            |             |
| M 614 | Preparation of telephone installation motorola 2200         | X             | X          |               |              |            |             |
| M 618 | Preparation of telephone installation                       | X             | X          |               |              |            |             |
| M 620 | E-accelerator   | X             | X          |               |              |            |             |
| M 635 | Parking assistant   | X             | X          |               |              |            |             |
| M 650 | Electrical sliding roof                                     |               | X          |               |              |            |             |
| M 651 | Electric window opener                                      | X             | X          |               |              |            |             |
| M 657 | Power assisted steering                                     | X             | X          |               |              |            |             |
| M 659 | Computer  | X             | X          |               |              |            |             |
| M 660 | OBD 2   | X             | X          |               |              |            |             |
| M 661 | Stricter emission-control concept                           | X             | X          |               |              |            |             |
| M 662 | Infonavigation system                                       | X             | X          |               |              |            |             |
| M 663 | Hands free receiver   | X             | X          |               |              |            |             |
| M 664 | ORVR  | X             | X          |               |              |            |             |
| M 665 | PCM2 basic module including radio                           | X             | X          |               |              |            |             |
| M 666 | PCM2 telephone (gsm)  | X             | X          |               |              |            |             |
| M 668 | PCM2 telephone handset                                      | X             | X          |               |              |            |             |
| M 670 | PCM2 navigation   | X             | X          |               |              |            |             |
| M 680 | MY 01 digital sound package, MY 02 sound system BOSE analog | X             | X          |               |              |            |             |
| M 685 | Rear seats, divided   |               | X          |               |              |            |             |
| M 686 | Radio "Porsche CDR 21"                                      | X             | X          |               |              |            | X           |
| M 688 | Radio "Porsche CDR 210"                                     | X             | X          |               |              |            |             |
| M 689 | Preparation of CD changer                                   | X             | X          |               |              |            |             |
| M 692 | CD changer "Porsche "                                       | X             | X          |               |              |            |             |
| M 695 | CD radio "Porsche CDR 22"                                   | X             | X          |               |              |            | X           |
| M 696 | CD radio "Porsche CDR 220"                                  | X             | X          |               |              |            |             |

|       |   | Boxster (986) | 911 (996) | Boxster (987) | Cayman (987) | 911 (997) | Not For USA |
|-------|---|---------------|-----------|---------------|--------------|-----------|-------------|
| M 698 | CD radio "Porsche CDR 32 "  | X             | X         |               |              |           | X           |
| M 699 | MD radio "Porsche MDR 32 "  | X             | X         |               |              |           | X           |
| M 936 | Seat covers rear, leather   | X             | X         |               |              |           |             |
| M 937 | Seat covers rear, leatherette                                       | X             | X         |               |              |           |             |
| M 939 | Seat covers rear, draped leather                                    | X             | X         |               |              |           |             |
| M 945 | Seat covers front cloth/leatherette/leatherette                     | X             | X         |               |              |           |             |
| M 946 | Seat covers front, leather leather/leatherette                      | X             | X         |               |              |           |             |
| M 946 | Seat covers front, leather leather/leatherette                      | X             | X         |               |              |           |             |
| M 981 | Leather equipment without seat covers                               | X             | X         |               |              |           |             |
| M 982 | Seat covers front, draped leather/leather leather                   | X             | X         |               |              |           |             |
| M 982 | Seat covers front, draped leather/leather leather                   | X             | X         |               |              |           |             |
| M 983 | Seat covers front, leather  | X             | X         |               |              |           |             |
| M 990 | Seat covers front, cloth/cloth/leatherette                          | X             | X         |               |              |           |             |
| M 990 | Seat covers front, cloth/cloth/leatherette                          | X             | X         |               |              |           |             |
| M 999 | Passenger compartment monitoring sensor for leather color of choice | X             | X         |               |              |           |             |