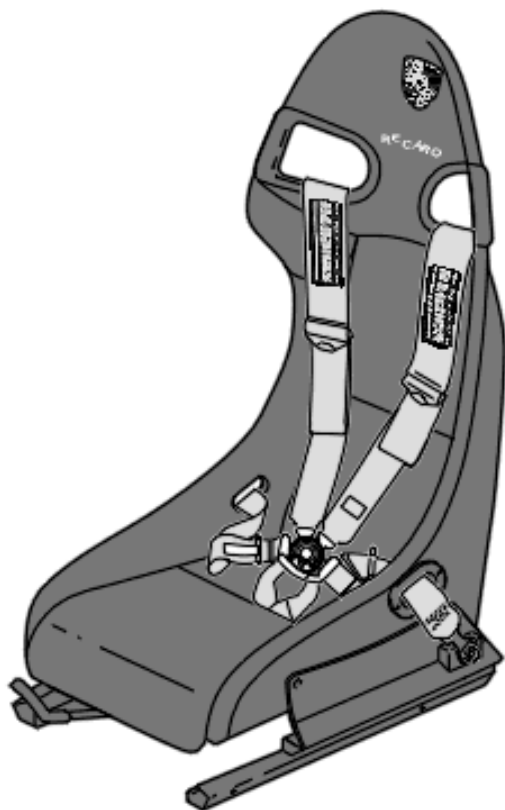
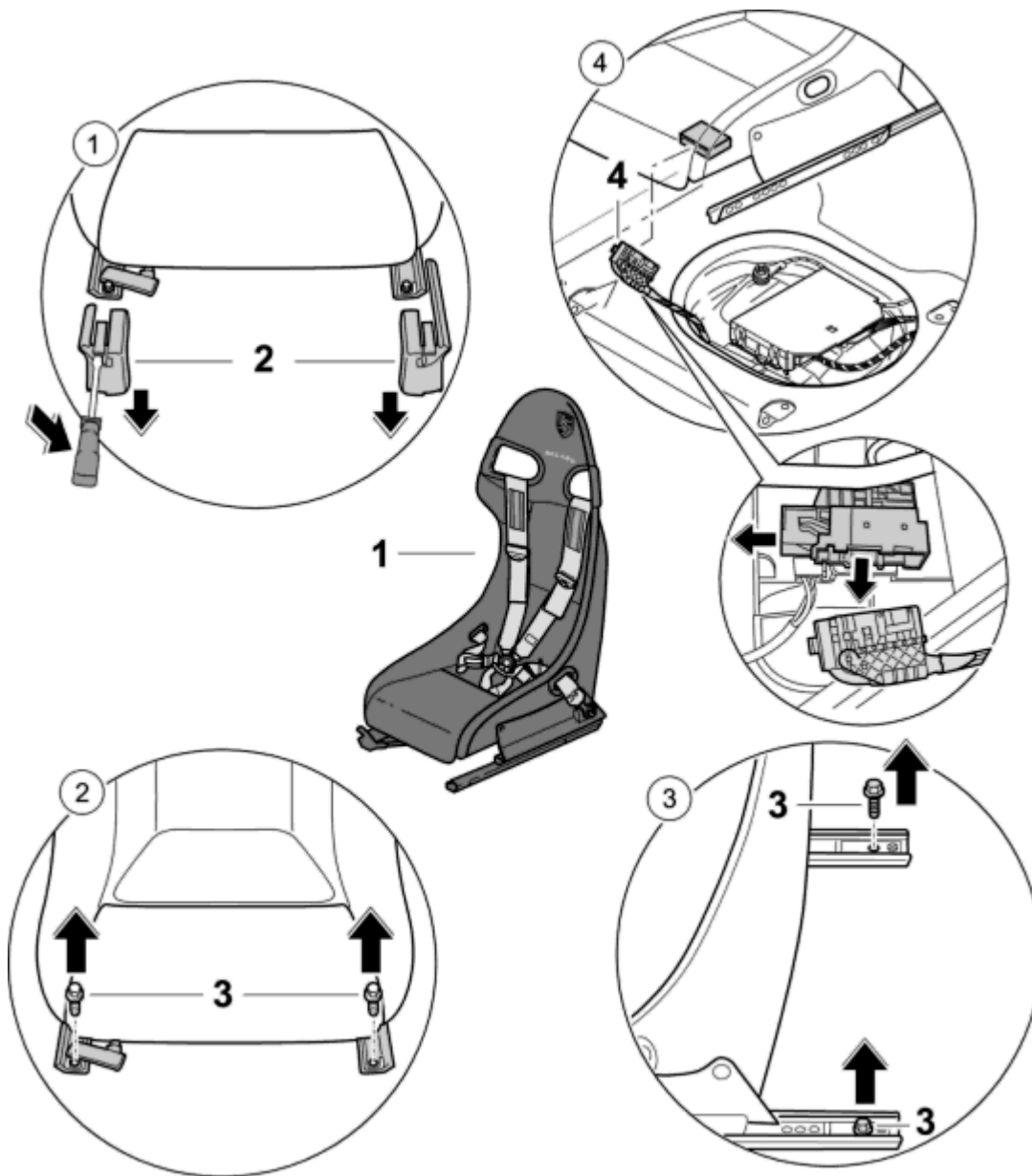


72 01 19 Removing and installing bucket seat – GT3

- Removing GT3 bucket seat
- Installing GT3 bucket seat
- Tightening torques

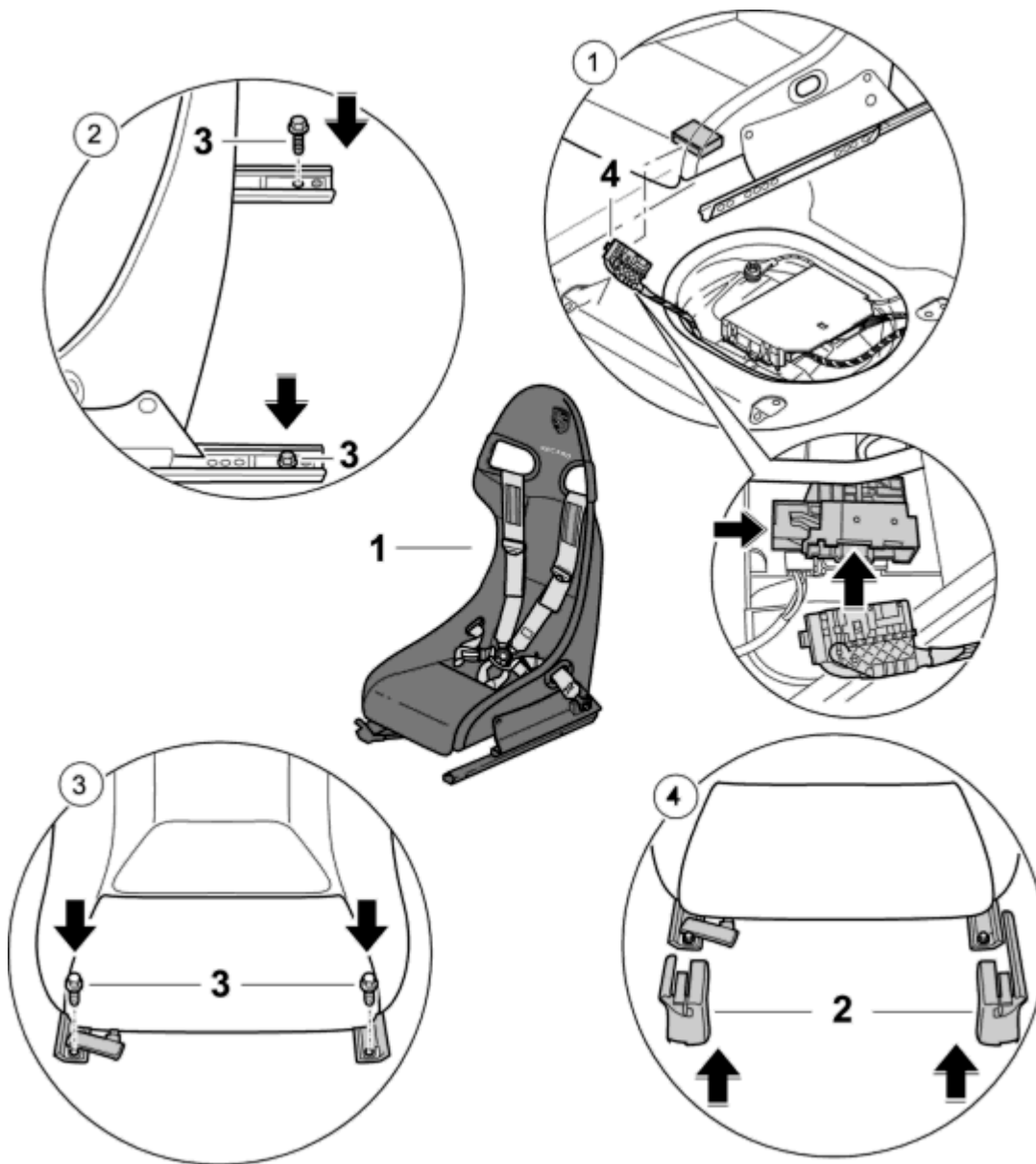


Removing GT3 bucket seat



No.	Procedure	Instructions
1	Removing seat rail cover	Insert a screwdriver under the locking tabs and press lightly upwards. Caution! Locking tabs can break. Pull front seat rail cover -2- out of the right and left seat rails towards the front.
2	Undoing seat screws at front	Move seat -1- to its rear limit position and undo the front M10 x 28 Torx screws -3- from the right and left seat rails using an E 12 socket wrench insert.
3	Undoing seat screws at rear	Move seat -1- to its front limit position and undo the M10 x 28 Torx screws -3- from the right and left seat rails using an E12 socket wrench insert.
4	Disconnecting the electrical plug connection	Release plug connector locking device on the side - arrow - and separate the plug connection -4- .

Installing GT3 bucket seat



No.	Procedure	Instructions
1	Connecting electrical plug connection	Join the plug connection -4- , press in plug connector locking device on the side -arrow- .
2	Fitting seat screws at rear	Position seat rails on the seat baseframe, screw the rear M10 x 28 Torx screws -3- into the seat baseframe on the left and right using the E12 wrench socket. => Tightening torques
3	Fitting seat screws at front	Move seat -1- to rear limit position and screw the front M10 x 28 Torx screws -3- into the seat baseframe on the left and right using the E12 wrench socket. => Tightening torques
4	Fitting seat rail cover -2-	Push seat rail cover -2- into front end of the left and right seat rails until the locking tab audibly engages.
5	Fitting six-point seat belt	=> Fitting six-point seat belt – GT3

Fitting six-point seat belt – GT3



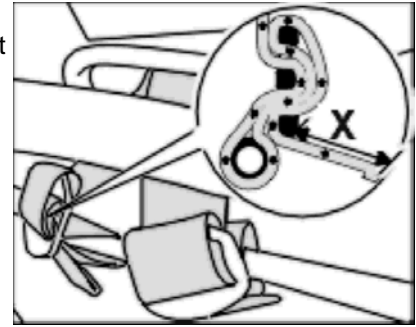
CAUTION

Freedom of movement impaired

- The six-point seat belt is only intended for safety on the racing track.
- The six-point seat belt is not approved for use on public roads!

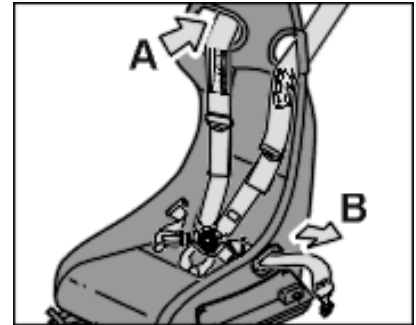
1. Loop technique for fastening the seat belt to the bucket seat cross member

- Loop the belt strap in the direction of the arrow **-inset-** around the bucket seat transverse strut into the adjustable slider. The projection **-dimension = X-** of the belt strap must be at least 100 mm.



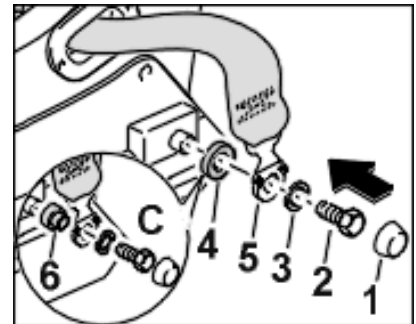
2. Pulling six-point seat belt through the openings in the bucket seat

- Pull six-point seat belt through the upper openings in the backrest from behind **-arrow A-** and through the openings in the seat frame from the side **-arrow B-**.



3. Fitting belt fitting

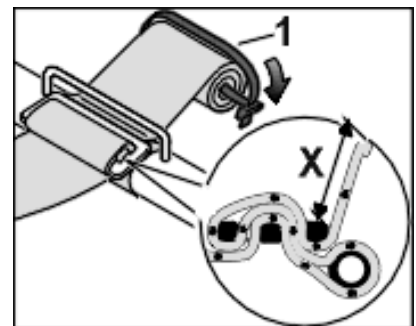
- Position foam part **-4-** and belt fitting **-5-** at the left and right on the seat frame. With the shim **-3-** and the fastening screw **-2-**, screw the belt fitting **-5-** tight. Position the cover **-1-** on the fastening screw **-2-**.
- Use the foam part **-4-** for the Club Sport version.
- For the Cup racing version, mount the bushing **-6-** instead of the foam part.



Tightening torque: 50 Nm (37 ftlb.)

4. Loop technique for fastening the seat belt to the bucket seat cross member

- Loop the belt strap in the direction of the arrow **-inset-** around the transverse strut on the roll cage into the adjustable slider. The projection **-dimension = X-** of the belt strap must be at least 100 mm.
- Roll up the projecting belt strap and bind it with a tie wrap **-1-**.



Tightening torques

Location	Illustration	Thread	Tightening torque [Nm] (ftlb.)
Fastening screw	-3-	M10 x 28	65 (48)