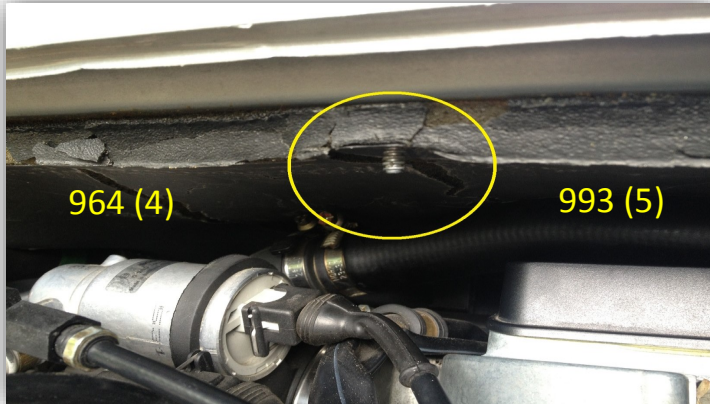


Installation Guide Model "964 and 993"

First, cover the Top of the engine so as not to drop pieces of loose foam or the Plastic Fasteners. Once the engine has been covered, twist the plastic fasteners off, 4 on the 964, 5 on the 993. Make certain there are no pieces of foam or glue remaining on the threads of the body studs.



Longer Fasteners supplied with the "911 Pad Keeper"



Factory installed Short Fasteners

Slide the "Pad Keeper" under the Foam Pad. Starting in the middle, press the Pad Keeper upwards and line up a Body stud in an opening of the Pad Keeper, thread a Fastener on, don't tighten completely. Once all fasteners are attached, begin tightening until they are secured. Check that both ends of the Pad Keeper are seated against and under the metal drip rail. One "spare" Fastener is supplied..... ** Cover the Engine **



The Aluminum backed Insulation "EZ Cool" that is glued to the backside of the Pad Keeper, is Very effective in reducing sound, as well as having heat reflective properties. We found that "EZ Cool", all things being considered, was the best "Automotive" Insulation for the "911 Pad Keeper".



100% Made in the USA



Patents Pending