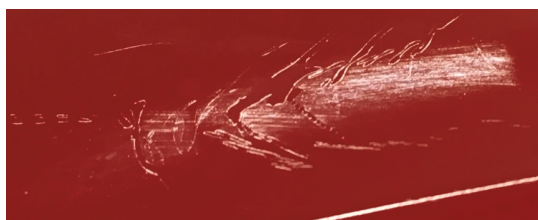


**Clear Coat Imperfections**

Vehicle Type: **All**

Model Year: **2016 - on**

Customer Concern: There are squiggly lines in the clear coat of the paint.



Technical Concern: The clear coat has imperfections in it from moisture under the protective wrap getting into the clear coat during transport.

Service Information: PCNA is aware of this issue. The moisture is able to get into the clear coat because the clear coat has not cured enough before the wrap is applied.

It is possible to remove the moisture from the clear coat and restore the clear coat using the following procedure:

- Please warm the vehicle in the paint booth first so that any subsequent repairs may be minimized.
  - o Monitor the painted surface temperature with an infrared thermometer during this process.
  - o Use the surface temperature information to manage the amount of heat applied to the vehicle.
- Set the booth temperature to obtain a surface temperature of 150 degrees F on the affected areas.
  - o Once this temperature has been reached, it has been found to remedy the imperfections in about 10 minutes.

- o Surface temps below 140 degrees F do not affect the issue enough to remedy the issue.
- Let the vehicle bake for 15 minutes and then check it.
  - o Do not exceed 30 minutes with surface temps above 140 degrees F.

**NOTE:** If the booth is not able to get the painted surface temperature to 150 degrees F, then the use of an electric infrared heater will bring up the temperature to bake out the imperfections.

- o Mask trim and seals when using electric infrared heating as a precaution.
- It is possible to bake the vehicle a second or third time if necessary.
- Any remaining imperfections will have to be repaired using normal repair methods.

Documentation: Please use the coding below when documenting this issue.

**Cause location:** LXXX (Please use the Paint Code, begins with an L)  
If the paint code is not accepted, please use 51030 (roof)

**Cause symptom:** 3421 Paint faults, lines, droplets

Dealership	Service Manager	_____	Shop Foreman	_____	Service Technician	_____	_____	_____	_____
Distribution	Asst. Manager	_____	Warranty Admin.	_____	Service Technician	_____	_____	_____	_____
Routing									

Dr. Ing. h.c. F. Porsche AG is the owner of numerous trademarks, both registered and unregistered, including without limitation the Porsche Crest®, Porsche®, Boxster®, Carrera®, Cayenne®, Cayman®, Macan®, Panamera®, Speedster®, Spyder®, Tiptronic®, VarioCam®, PCM®, PDK®, 911®, RS®, 4S®, 718®, 918 Spyder®, FOUR UNCOMPROMISED®, and the model numbers and distinctive shapes of the Porsche automobiles such as, the federally registered 911 and Boxster automobiles. The third party trademarks contained herein are the properties of their respective owners. Porsche Cars North America, Inc. believes the specifications to be correct at the time of printing. However, specifications, standard equipment and options are subject to change without notice. Some options may be unavailable when a car is built. Some vehicles may be shown with non-U.S. equipment. Please ask your authorized Porsche dealer for advice concerning the current availability of options and verify the optional equipment that you ordered. Porsche recommends seat belt usage and observance of traffic laws at all times.