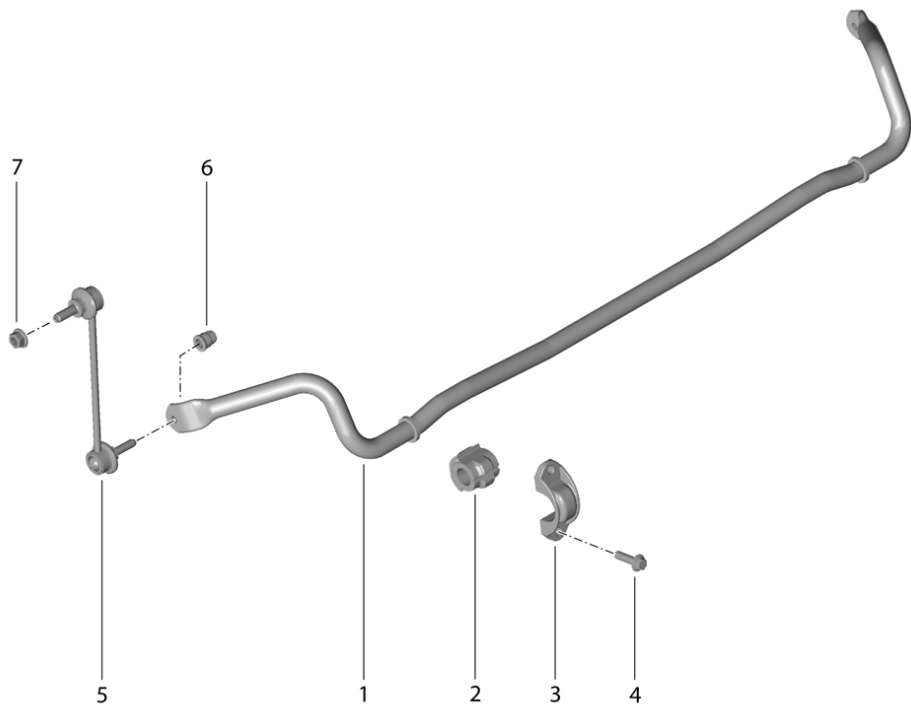
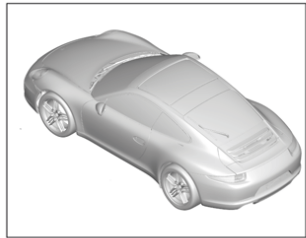


Model	Year	MG	SG	Illustration	Restrictions	UPD	13:19	02.02.2014	PORSCHE	PET	PORSCHE
991	2014	5	01	501-03		335					



Pos	Part Number	Description	Remark	Qty	Model
1	991 333 705 11	stabiliser carrera 2	12-	1	I008/219/250 I475
(1)	991 333 705 11	stabiliser	13-	1	I008/219/250 I477
(1)	991 333 705 11	stabiliser	12-	1	I008/219/475 I487
(1)	991 333 705 11	stabiliser	13-	1	I008/219/477 I487
(1)	991 333 705 12	stabiliser	12-	1	I008/029/219 I487
(1)	991 333 705 12	stabiliser	12-	1	I008/029/219 I250
(1)	991 333 705 12	stabiliser	12-	1	I008/220/475 I487
(1)	991 333 705 12	stabiliser	13-	1	I008/220/477 I487
(1)	991 333 705 12	stabiliser	12-	1	I008/221/250 I475
(1)	991 333 705 12	stabiliser	13-	1	I008/221/250 I477
(1)	991 333 705 16	stabiliser	12-	1	COUPE I008/030/220 I487
(1)	991 333 705 16	stabiliser	12-	1	COUPE I008/030/221 I250
(1)	991 333 705 12	stabiliser	12-	1	I009/220/475 I487
(1)	991 333 705 12	stabiliser	13-	1	I009/220/477 I487
(1)	991 333 705 12	stabiliser	12-	1	I009/221/250 I475
(1)	991 333 705 12	stabiliser	13-	1	I009/221/250 I477
(1)	991 333 705 16	stabiliser	12-	1	COUPE I009/030/220 I487
(1)	991 333 705 16	stabiliser	12-	1	COUPE I009/030/221 I250
1	991 333 705 13	carrera 4 stabiliser	13-	1	I008/029/219 I487

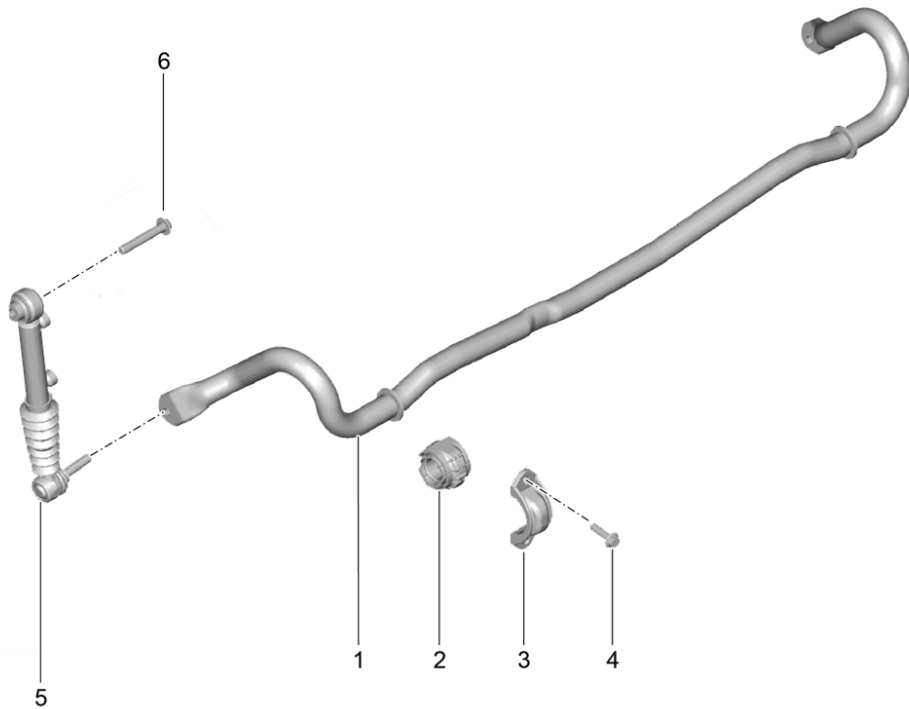
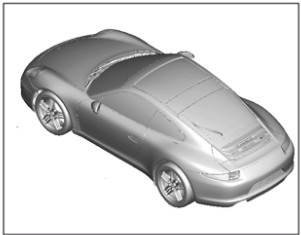
Model	Year	MG	SG	Illustration	Restrictions	UPD	13:19	02.02.2014	PORSCHE	PET	PORSCHE
991	2014	5	01	501-03		335					

Pos	Part Number	Description	Remark	Qty	Model	Pos	Part Number	Description	Remark	Qty	Model
(1)	991 333 705 13	stabiliser	13-	1	I008/029/219 I250	(2)	991 333 794 07	stabiliser mounting	13-	2	I008/220/477 I487
(1)	991 333 705 13	stabiliser	13-	1	I008/219/475 I487	(2)	991 333 794 07	stabiliser mounting	12-	2	I008/221/250 I475
(1)	991 333 705 13	stabiliser	13-	1	I008/219/477 I487	(2)	991 333 794 07	stabiliser mounting	13-	2	I008/221/250 I477
(1)	991 333 705 13	stabiliser	13-	1	I008/219/250 I475	(2)	991 333 794 09	stabiliser mounting	12-	2	COUPE I008/030/220 I487
(1)	991 333 705 13	stabiliser	13-	1	I008/219/250 I477	(2)	991 333 794 09	stabiliser mounting	12-	2	COUPE I008/030/221 I250
(1)	991 333 705 14	stabiliser	13-	1	I008/220/475 I487	(2)	991 333 794 08	stabiliser mounting	12-	2	I009/220/475 I487
(1)	991 333 705 14	stabiliser	13-	1	I008/221/250 I475	(2)	991 333 794 08	stabiliser mounting	13-	2	I009/220/477 I487
(1)	991 333 705 14	stabiliser	13-	1	I008/221/250 I477	(2)	991 333 794 08	stabiliser mounting	12-	2	I009/221/250 I475
(1)	991 333 705 15	stabiliser	13-	1	Coupe I008/030/220 I487	(2)	991 333 794 08	stabiliser mounting	13-	2	I009/221/250 I477
(1)	991 333 705 15	stabiliser	13-	1	Coupe I008/030/221 I250	(2)	991 333 794 09	stabiliser mounting	12-	2	COUPE I009/030/220 I487
(1)	991 333 705 14	stabiliser	13-	1	I009/220/475 I487	(2)	991 333 794 09	stabiliser mounting	12-	2	COUPE I009/030/220 I487
(1)	991 333 705 14	stabiliser	13-	1	I009/220/477 I487	(2)	991 333 794 09	stabiliser mounting	12-	2	COUPE I009/030/221 I250
(1)	991 333 705 14	stabiliser	13-	1	I009/221/250 I475	(2)	991 333 794 09	carrera 4			
(1)	991 333 705 14	stabiliser	13-	1	I009/221/250 I477	(2)	991 333 794 09	stabiliser mounting	13-	2	I008/029/219 I487
(1)	991 333 705 15	stabiliser	13-	1	Coupe I009/030/220 I487	(2)	991 333 794 09	stabiliser mounting	13-	2	I008/029/219 I250
(1)	991 333 705 15	stabiliser	13-	1	Coupe I009/030/221 I250	(2)	991 333 794 09	stabiliser mounting	13-	2	I008/219/475 I487
		carrera 2				(2)	991 333 794 09	stabiliser mounting	13-	2	I008/219/250 I475
2	991 333 794 07	stabiliser mounting	12-	2	I008/029/219 I487	(2)	991 333 794 09	stabiliser mounting	13-	2	I008/219/477 I487
(2)	991 333 794 07	stabiliser mounting	12-	2	I008/029/219 I250	(2)	991 333 794 09	stabiliser mounting	13-	2	I008/219/250 I477
(2)	991 333 794 07	stabiliser mounting	12-	2	I008/220/475 I487	(2)	991 333 794 10	stabiliser mounting	13-	2	I008/220/475 I487
						(2)	991 333 794 10	stabiliser mounting	13-	2	I008/221/250 I475

Model	Year	MG	SG	Illustration	Restrictions	UPD	13:19	02.02.2014	PORSCHE	PET	PORSCHE
991	2014	5	01	501-03		335					

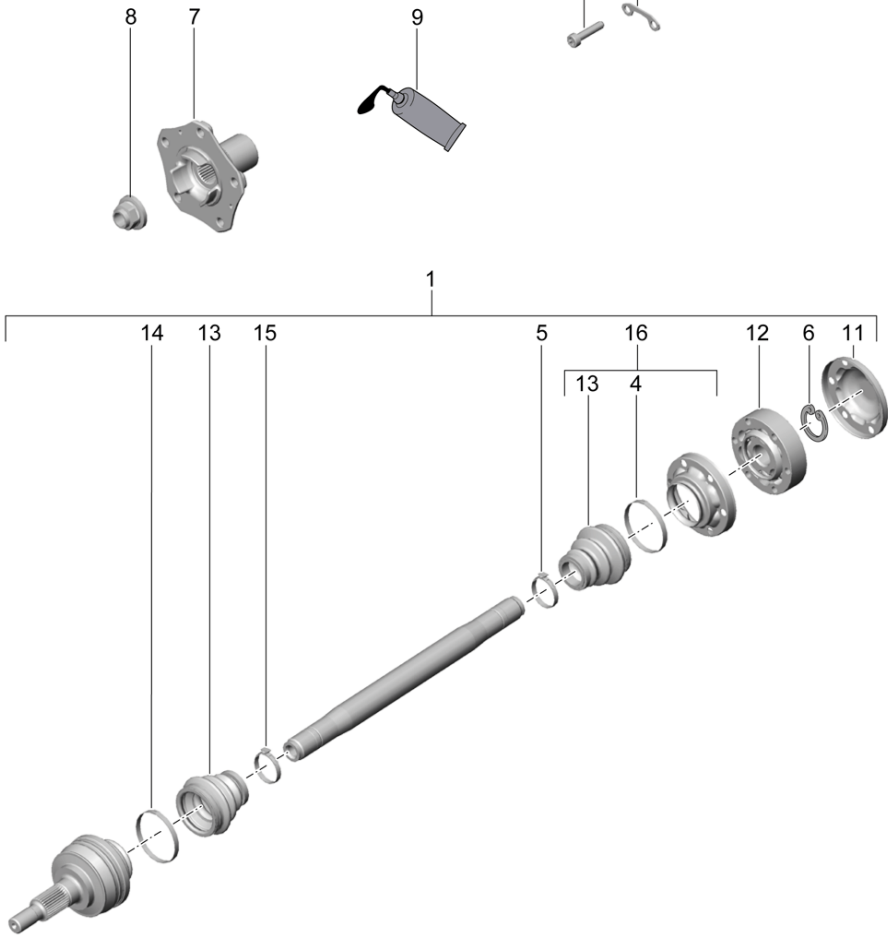
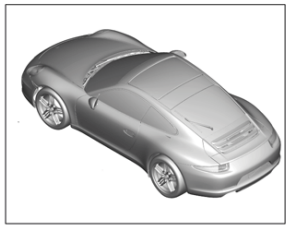
Pos	Part Number	Description	Remark	Qty	Model	Pos	Part Number	Description	Remark	Qty	Model
(2)	991 333 794 11	stabiliser mounting	13-	2	COUPE I008/030/220 I487						
(2)	991 333 794 11	stabiliser mounting	13-	2	COUPE I008/030/221 I250						
(2)	991 333 794 10	stabiliser mounting	13-	2	I009/220/475 I487						
(2)	991 333 794 10	stabiliser mounting	13-	2	I009/221/250 I475						
(2)	991 333 794 11	stabiliser mounting	13-	2	COUPE I009/030/220 I487						
(2)	991 333 794 11	stabiliser mounting	13-	2	COUPE I009/030/221 I250						
3	991 333 779 00	clip		2							
4	999 072 077 01	hexagon-head bolt M 10 X 30		4							
5	991 333 071 02	stabiliser mounting		2							
6	999 084 123 09	hexagon nut M 10		2							
7	999 084 445 01	lock nut M 12 X 1,5 stabiliser		2							

Model	Year	MG	SG	Illustration	Restrictions	UPD	13:19	02.02.2014	PORSCHE	PET	PORSCHE
991	2014	5	01	501-04		335					



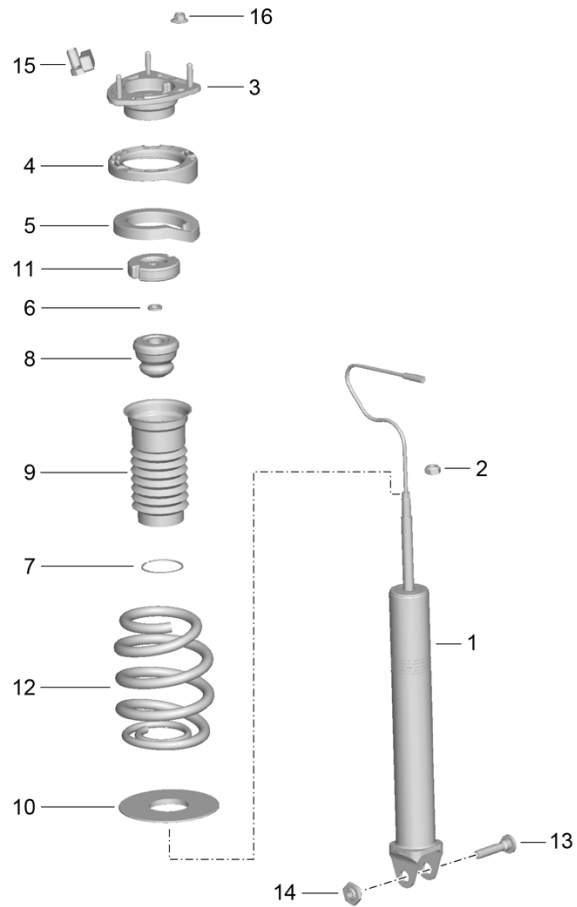
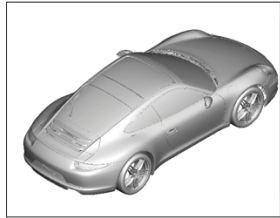
Pos	Part Number	Description	Remark	Qty	Model
		stabiliser PDCC			I031/352
1	991 333 703 02	stabiliser		1	I031 I352
2	991 333 797 02	stabiliser mounting		1	I031 I352
3	991 333 777 01	clip		2	I031 I352
4	999 072 077 01	hexagon-head bolt M 10 X 30		4	I031 I352
5	991 359 085 03	damper		2	I031 I352
6	999 073 530 01	pan-head screw M 12 X 1,5 X 72		2	I031 I352
-	999 084 445 01	lock nut M 12 X 1,5		2	

Model	Year	MG	SG	Illustration	Restrictions	UPD	13:20	02.02.2014	PORSCHE	PET	PORSCHE
991	2014	5	01	501-05		335					



Pos	Part Number	Description	Remark	Qty	Model
		drive shaft			
		wheel hub			
1	991 332 024 00	drive shaft		2	I487
(1)	991 332 024 50	drive shaft		2	I250
2	999 073 517 01	pan-head screw M 10 X 1 X 46,5		12	
3	991 332 191 00	plate	-14	6	
(3)	9P1 407 306	plate	14-	6	
4	996 332 957 00	clip 73 MM		2	
5	996 332 257 00	clip		2	I487
5	997 332 257 00	clip		2	I250
6	900 041 014 00	circlip		2	
7	991 331 605 03	wheel hub		2	
8	999 084 135 01	hexagon nut M 22 X 1,5		2	
9	000 043 110 02	grease 1 100-gramme tube		X	
(9)	000 043 205 36	sealing compound 1 100-gramme tube		X	
11	997 332 267 00	lid		2	
12	991 332 030 00	joint		2	
13	996 332 293 00	dust bellows		2	I487
13	997 332 293 00	dust bellows		2	I250
14	996 332 957 00	clip		2	I487
14	996 332 957 00	clip		2	I250
15	996 332 257 00	clip		2	
16	997 332 955 00	bellows with cap		2	I487
(16)	997 332 955 01	bellows with cap		2	I250

Model	Year	MG	SG	Illustration	Restrictions	UPD	13:20	02.02.2014	PORSCHE	PET	PORSCHE
991	2014	5	02	502-00		335					



Pos	Part Number	Description	Remark	Qty	Model
		shock absorber coil spring			
1	991 333 051 05	shock absorber		2	I029
(1)	991 333 053 04	shock absorber		2	I352
				2	I475
				2	I477
		see technical manual 42 71 37			
(1)	991 333 053 08	shock absorber		2	I352
				2	I475
				2	I477
		see technical manual 42 71 37			
(1)	991 333 053 06	shock absorber		2	I030
					I031
2	999 084 050 02	hexagon nut M 12 X 1		2	
3	991 333 161 00	supporting mount		2	
(3)	991 333 161 01	supporting mount	13-	2	I477
-	991 333 527 00	spacer	13-	2	I477
4	991 333 511 00	insert		2	
5	991 333 504 00	base		2	
6	999 025 271 02	washer 12,5 X 19,1 X 3		2	
7	999 152 163 00	circlip		2	
8	991 333 105 03	additional spring		2	I029
(8)	991 333 105 02	additional spring		2	I352
				2	I475
				2	I477
(8)	991 333 105 01	additional spring		2	I030
					I031
9	991 333 107 00	bellows		2	I029
				2	I477
(9)	991 333 107 01	bellows		2	I030
				2	I031
				2	I352
				2	I475
10	997 333 513 00	concave washer		2	I029
				2	I352
				2	I475
				2	I477
(10)	991 333 413 00	concave washer		2	I030
					I031
11	991 333 691 00	insert		2	
(11)	991 333 691 01	insert		2	
12	991 333 531 10	coil spring		1	I029

Model	Year	MG	SG	Illustration	Restrictions	UPD	13:20	02.02.2014	PORSCHE	PET	PORSCHE
991	2014	5	02	502-00		335					

Pos	Part Number	Description	Remark	Qty	Model	Pos	Part Number	Description	Remark	Qty	Model
	504	1 set identification pale orange yellow-green				-	991 618 450 08	control unit	13	1	IIY2
(12)	991 333 531 05	coil spring		1	I352					1	COUPE
	504	1 set identification light blue yellow-green		1	I475					1	I030/140
				1	I477					1	COUPE
(12)	991 333 531 03	coil spring		1	I030					1	I031/140
	504	1 set identification yellow-green pale orange		1	I031					1	I140/352
13	991 331 230 01	pan-head screw M 12 X 1,5		2						1	I140/475
14	991 331 231 00	hexagon nut M 12 X 1,5		2						1	I140/477
15	991 606 111 00	acceleration sensor body		2							
16	999 084 447 01	hexagon nut M 8		6							
-	900 378 173 01	hexagon-head bolt M 6 X 20 PA		2							
-	991 618 465 05	control unit	-13	1	-IIY2/I029 I140						
-	991 618 465 09	control unit	13	1	IIY2/029/140						
-	991 618 440 05	control unit	-13	1	-IIY2 COUPE I030 COUPE I031 I352 I475						
-	991 618 440 08	control unit	13	1	IIY2 COUPE I030 COUPE I031 I352 I475 I477						
-	991 618 450 05	control unit	-13	1	-IIY2 COUPE I030/140 COUPE I031/140 I140/352 I140/475						