

LET'S FIX THE LOOSE BUTTONS THAT RATTLE, HUM AND BUZZ. IT'S EASY TO DO. TAKE YOUR TIME AND ALLOW 2 HOURS



CLIMATE CONTROL UNIT IS THE SOURCE OF MANY INTERIOR CABIN RATTLES

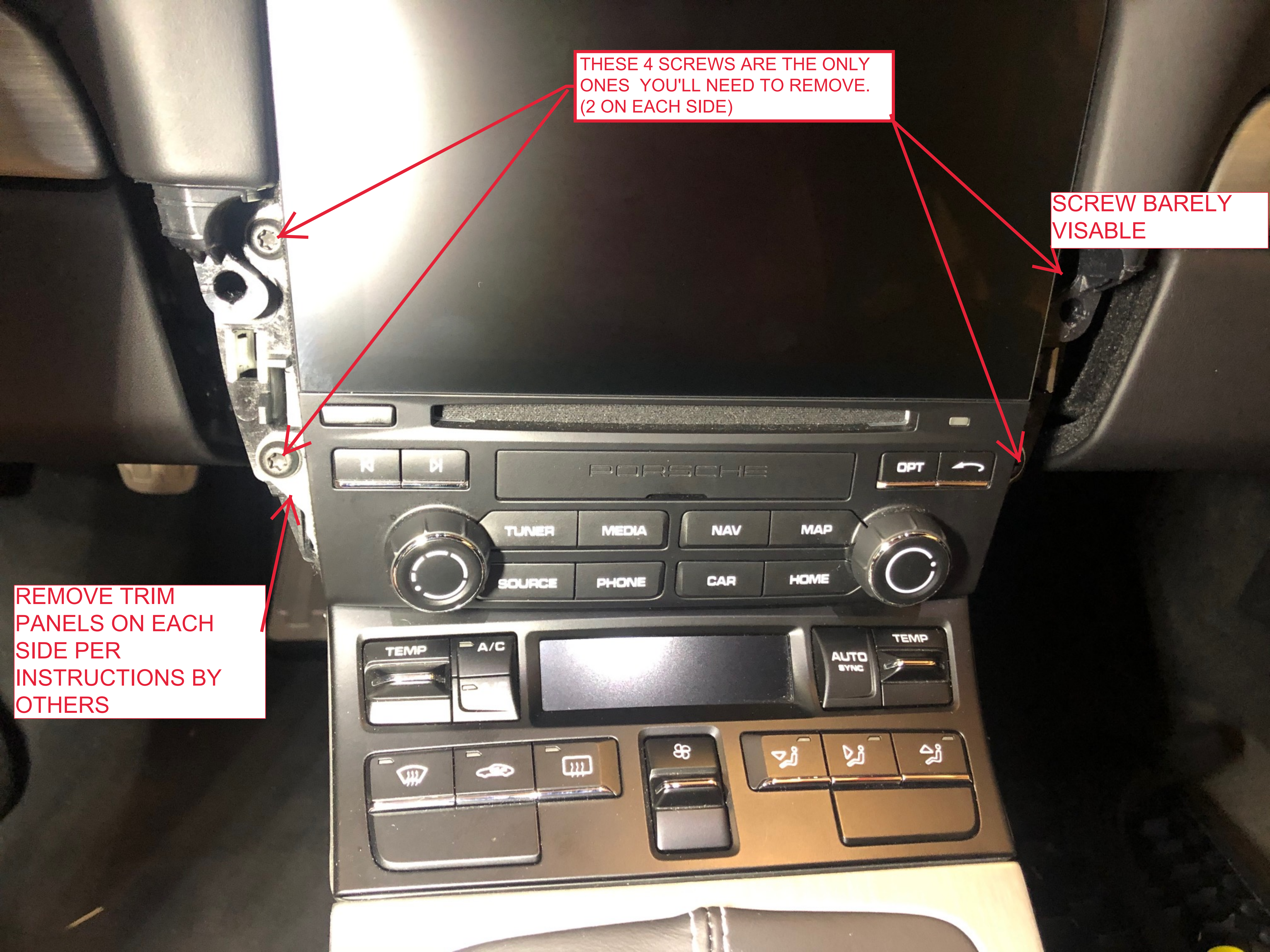
MOVE YOUR GEAR LEVER OUT OF THE WAY



THESE 4 SCREWS ARE THE ONLY ONES YOU'LL NEED TO REMOVE. (2 ON EACH SIDE)

SCREW BARELY VISABLE

REMOVE TRIM PANELS ON EACH SIDE PER INSTRUCTIONS BY OTHERS



THIS UNIT SLIDES OUT VERY EASILY. FIND A WAY TO SUSPEND OUT OF THE WAY. BUNGIE CORDS FROM THE REAR VIEW MIRROR WORK GREAT.

ADVISED TO PROTECT ANY DELICATE SURFACES



USE INTERIOR TRIM TOOLS TO LIFT THIS CLIMATE CONTROL UNIT OUT. NO SCREWS TO REMOVE. LIFT VERTICALLY. IT'S HELD IN ONLY BY PLASTIC PINS. VERY EASY TO REMOVE.



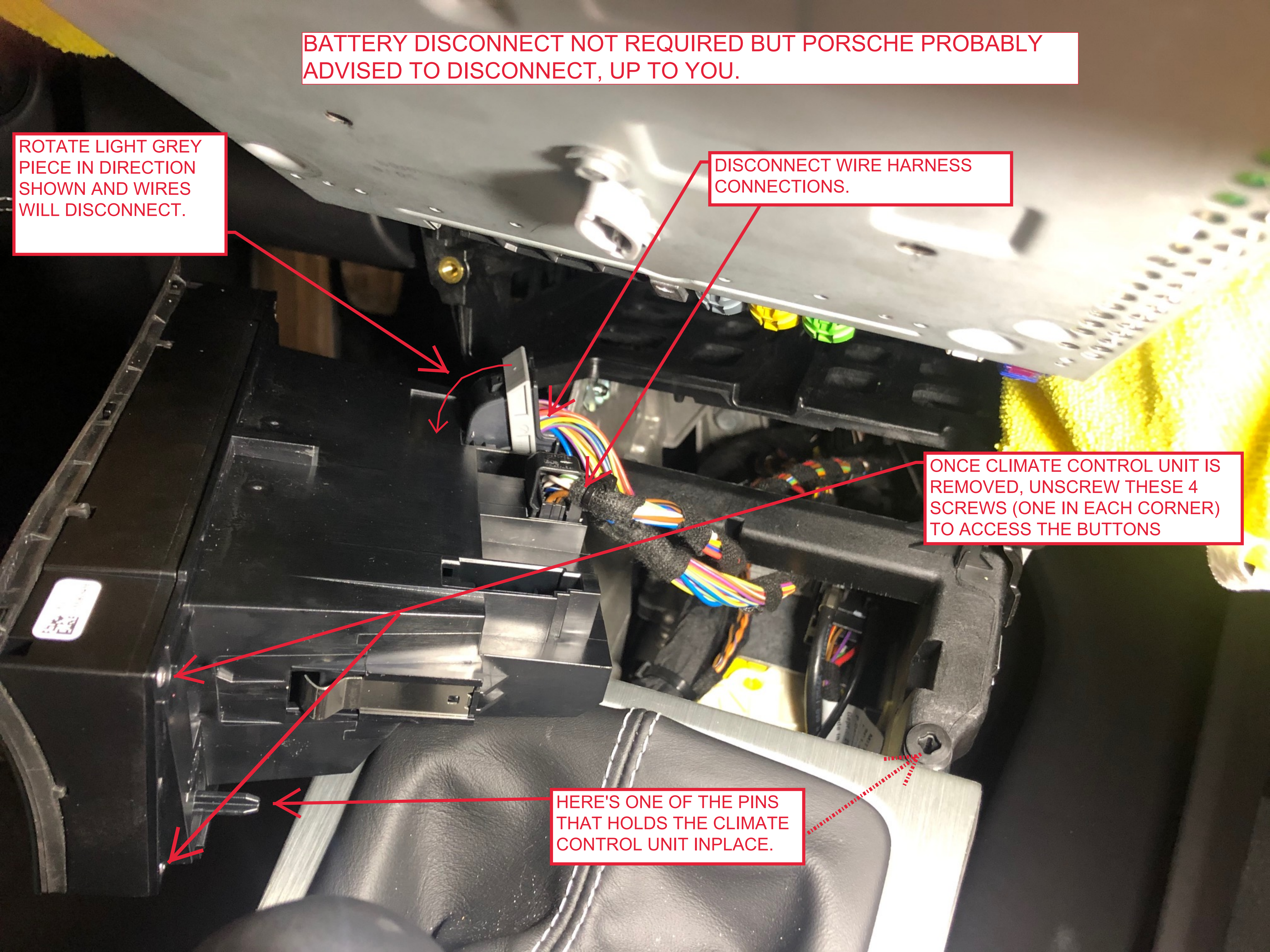
BATTERY DISCONNECT NOT REQUIRED BUT PORSCHE PROBABLY ADVISED TO DISCONNECT, UP TO YOU.

ROTATE LIGHT GREY PIECE IN DIRECTION SHOWN AND WIRES WILL DISCONNECT.

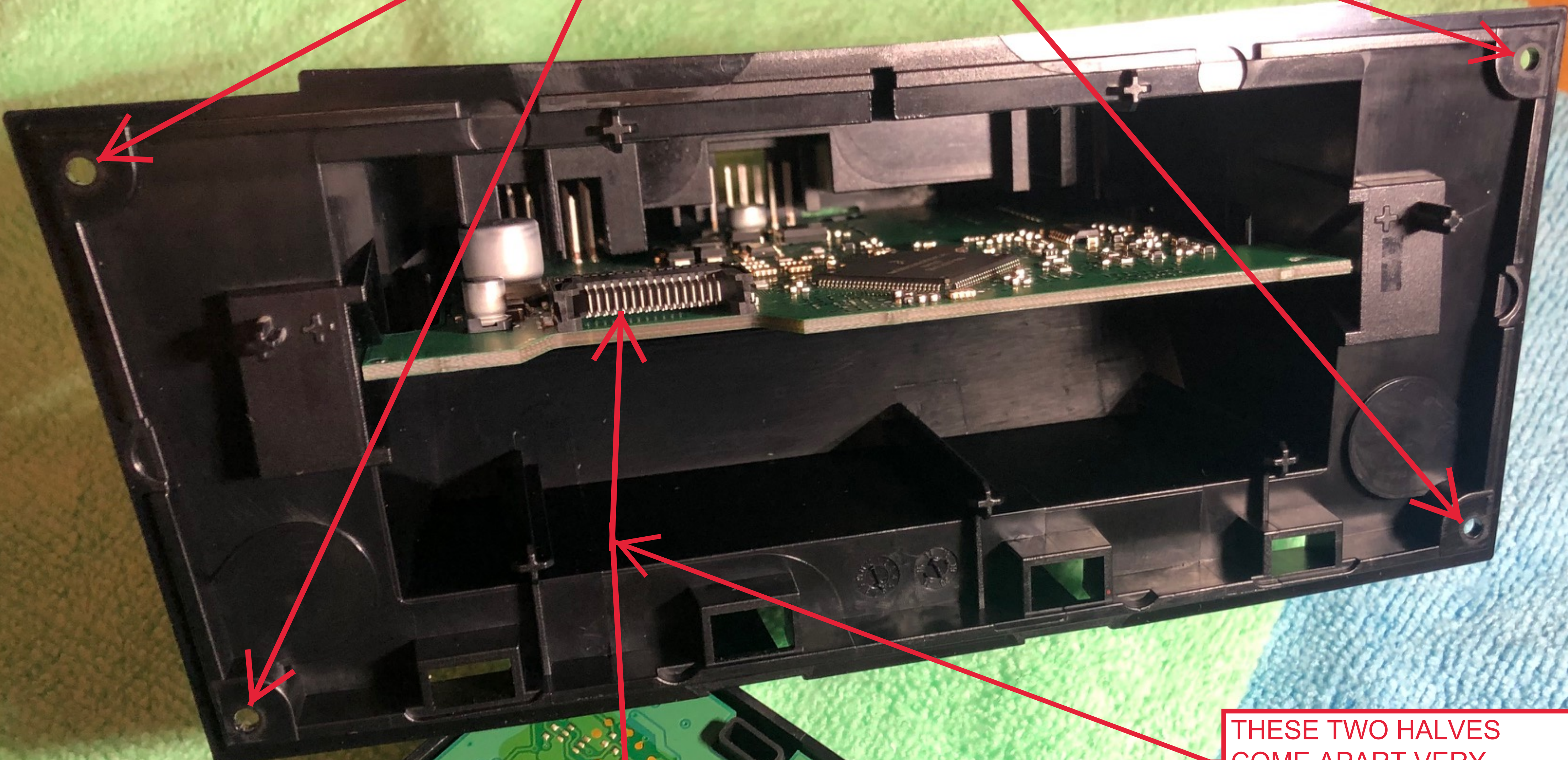
DISCONNECT WIRE HARNESS CONNECTIONS.

ONCE CLIMATE CONTROL UNIT IS REMOVED, UNSCREW THESE 4 SCREWS (ONE IN EACH CORNER) TO ACCESS THE BUTTONS

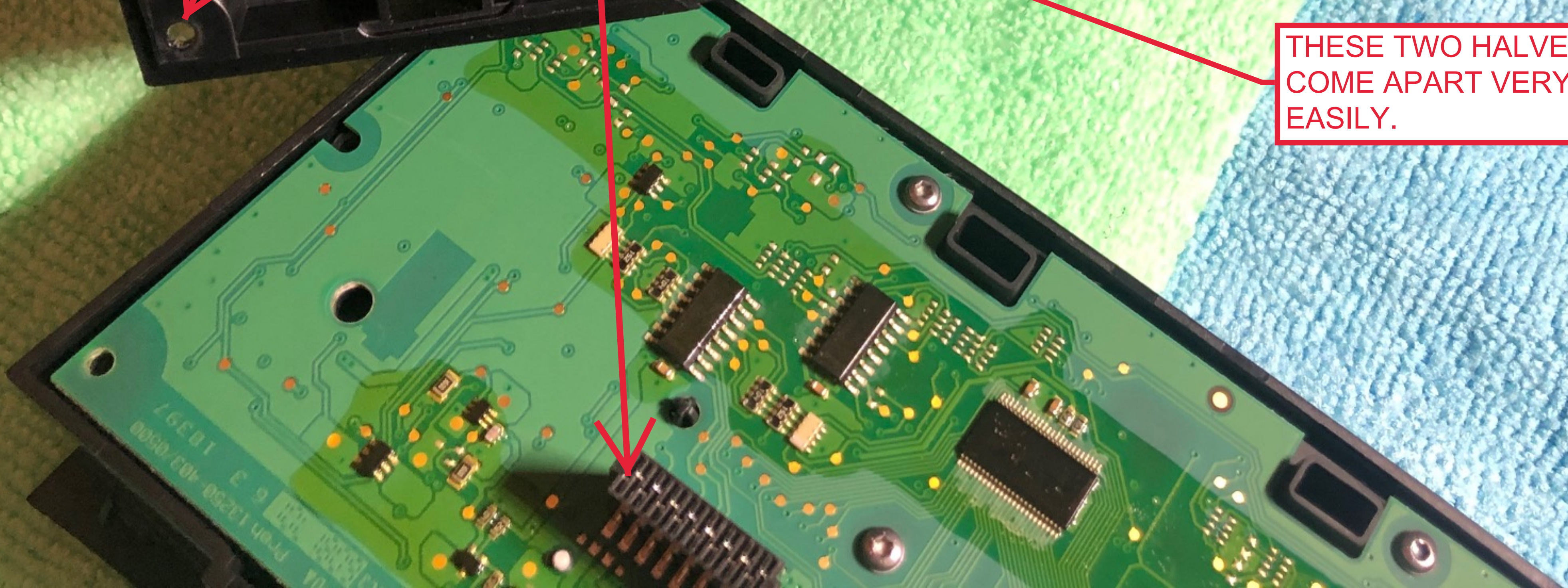
HERE'S ONE OF THE PINS THAT HOLDS THE CLIMATE CONTROL UNIT INPLACE.



REMOVE THESE
4 SCREWS



THESE TWO HALVES
COME APART VERY
EASILY.



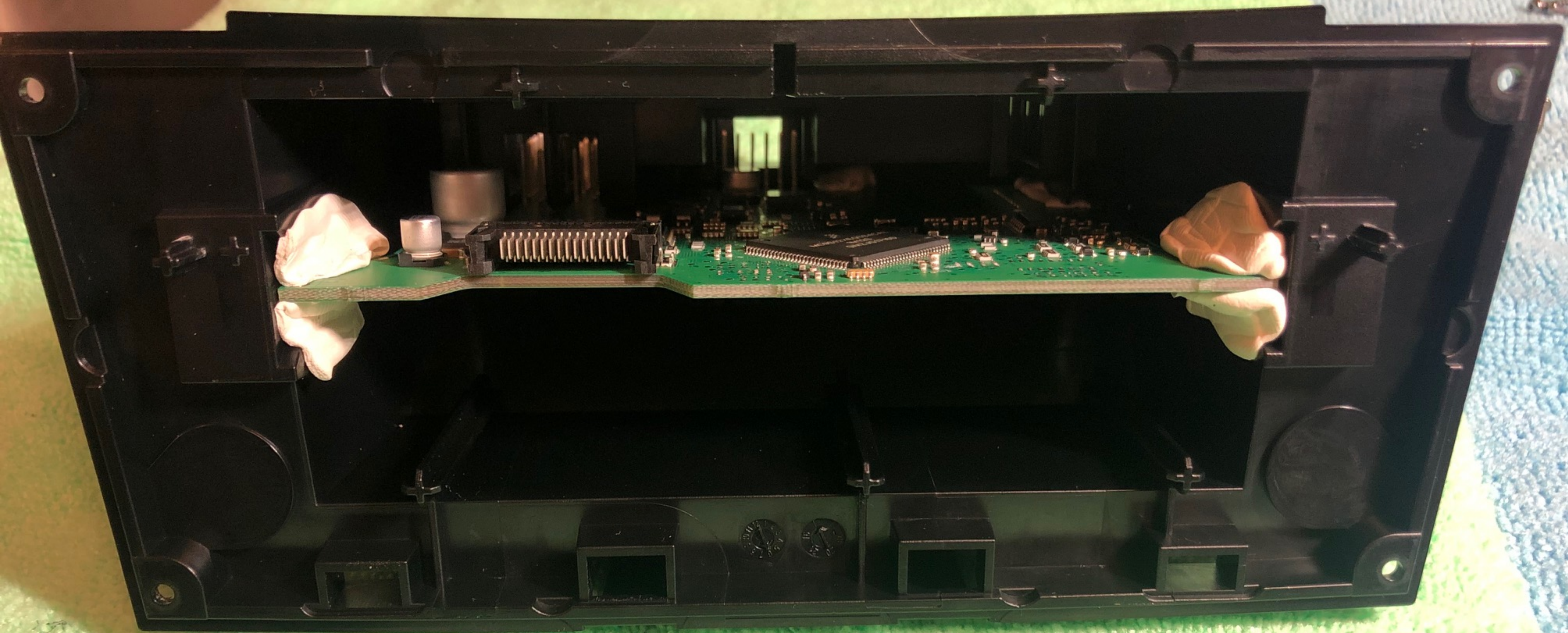


IMAGE AFTER THE Uhu Patafix IS APPLIED. THE CIRCUIT BOARD IN THE PLASTIC CARRIER RATTLES AND BUZZES AS THEY ARE ONLY LOOSLY HELD IN PLACE. SIMPLE EASY SOLUTION.

I USED THIS STUFF. IT DOESN'T DRY OUT, IT'S PERFECT FOR THE JOB. IT DOESN'T OOZE OR CREATE ANY LONGTERM PROBLEMS WITH PLASTC PARTS. IT DAMPENS VIBRATIONS AND HOLDS LOOSE CIRCUIT BOARDS IN PLACE.

UHU®

patafix



yapıştırın. Tekrar kullanım için UHU patafix, hassas yüzey ve kalabilecek artık parça, bası çıkartılabilir. UHU patafix, izleri bir yağ giderici kullanmalzeme örneği üzerinde

(RUS) Способ применения: наносите на поверхность в мягком состоянии, который будет повторного использования. patafix не подходит. Возможный остаток можно удалить нажатий другой подушечкой. patafix может оставлять

Sticks again & again.

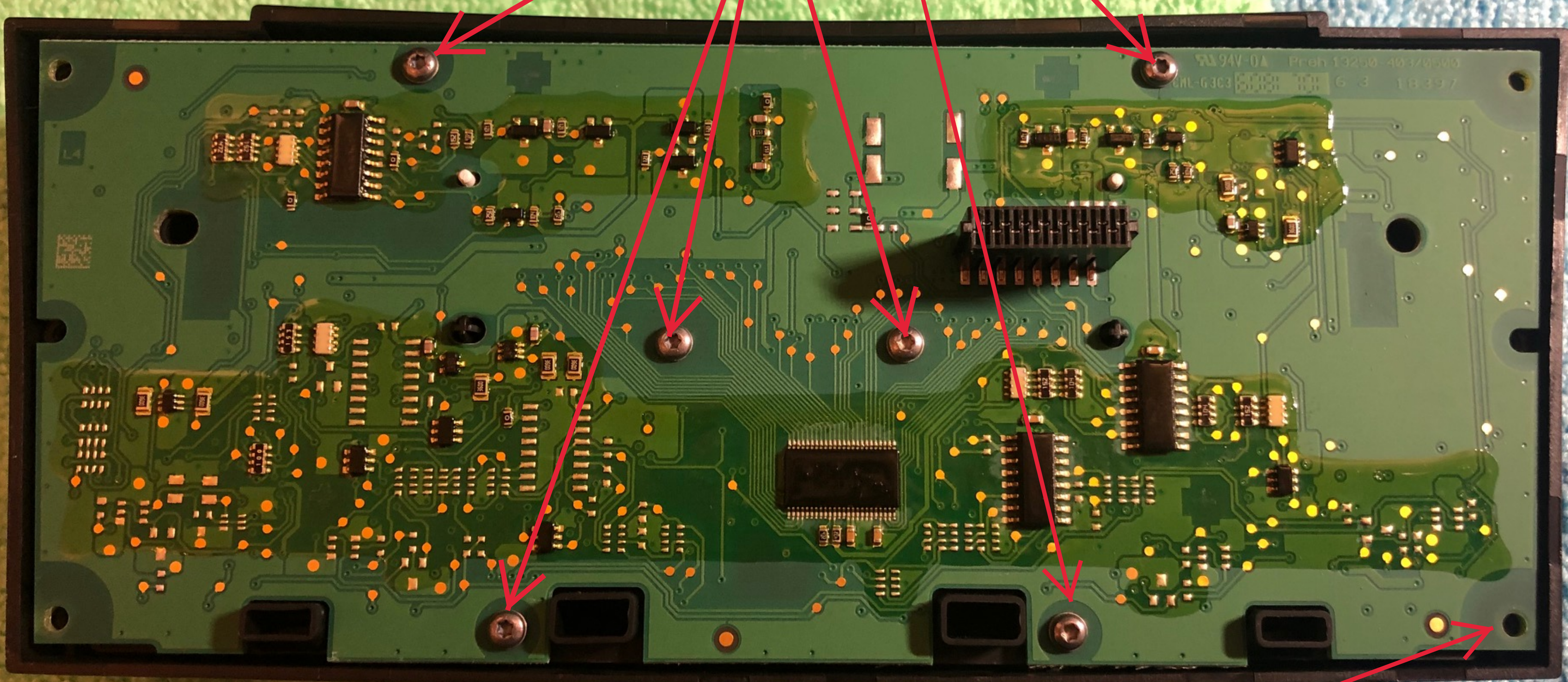
80

Glue pads • Hamur yapıştırıcı • Клеящие подушечки

- strong, clean & removable
- güçlü, temiz & çıkarılabilir
- прочные, многоразовые, не оставляют следов



REMOVE THESE 6
SCREWS TO ACCESS
THE RATTLING BUTTONS

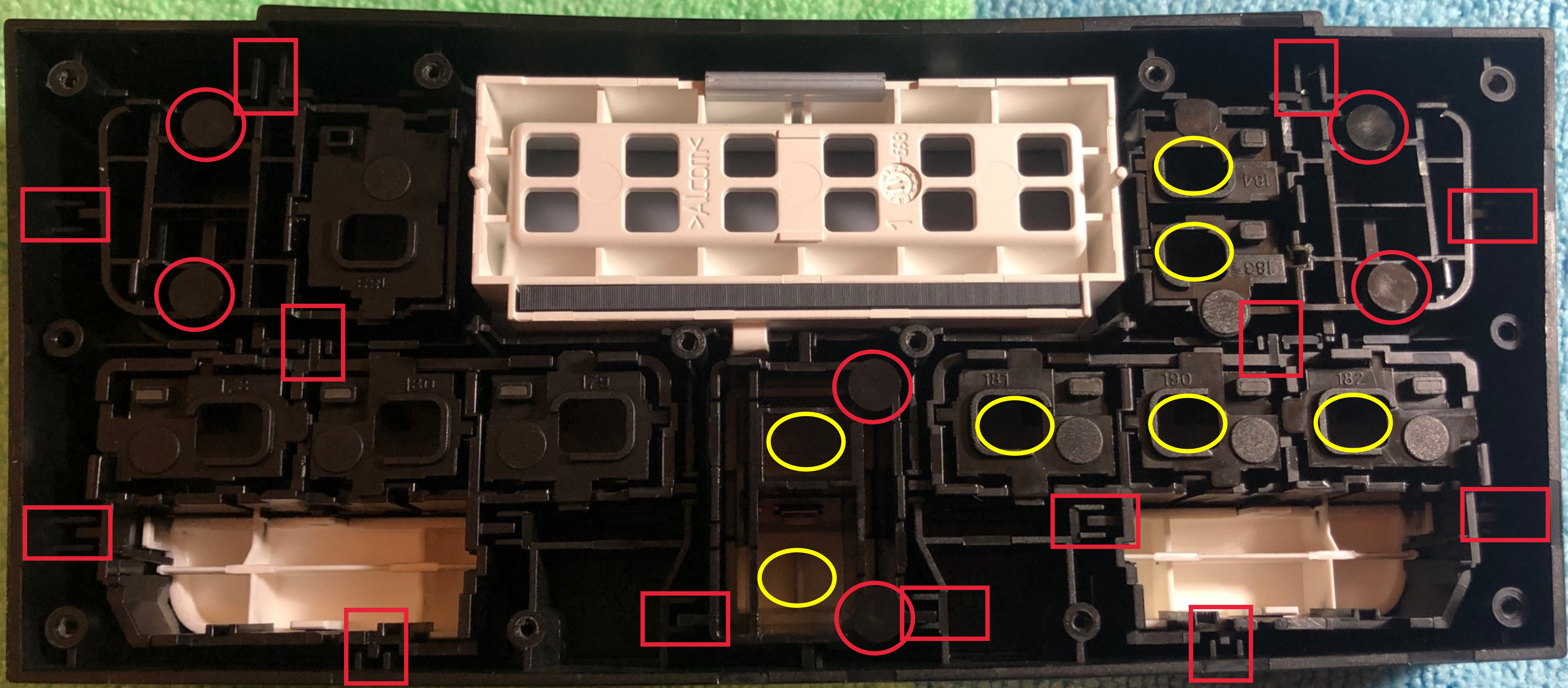


THESE 4
WERE
REMOVED IN
THE LAST
STEP

WHAT A RATTLING MESS THESE BUTTONS ARE



AT YELLOW CIRCLE LOCATIONS ADD THE Uhu Patafix, OR SIMILAR AND PRESS WITH SMALL SCREW DRIVER ONTO THE BUTTON'S PLASTIC SURFACE. THIS WILL ADD WEIGHT AND DAMPENING CHARACTERISTICS. (SAME ON OPPOSITE SIDE)



AT RED CIRCLE LOCATIONS, THESE ARE PLASTIC PINS THAT ARE VERY LOOSE AND RATTLE. THEY ACTIVATE THE BUTTON'S FUNCTIONS. FIND A THICK GREASE YOU LIKE AND APPLY A LITTLE AMOUNT ON THE SHAFT OF EACH PIN. HUGE DIFFERENCE. KILLS RATTLES !!

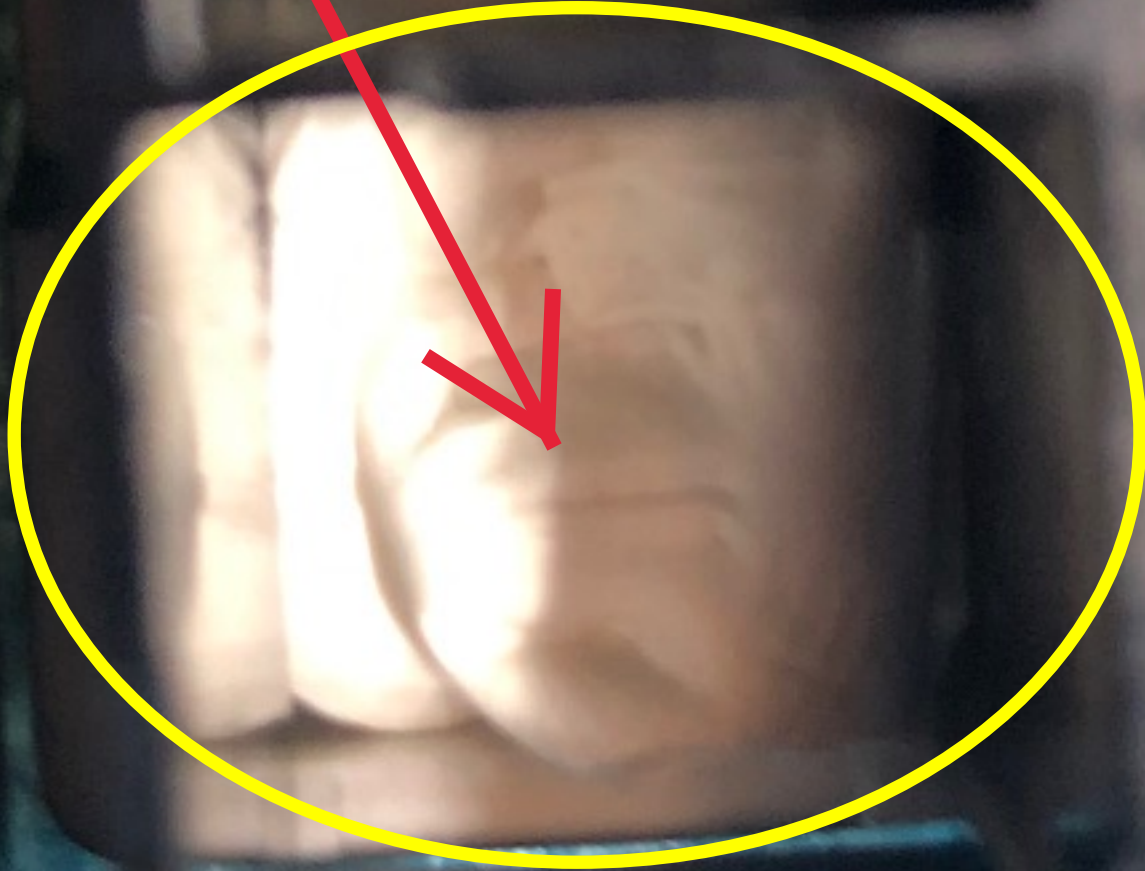
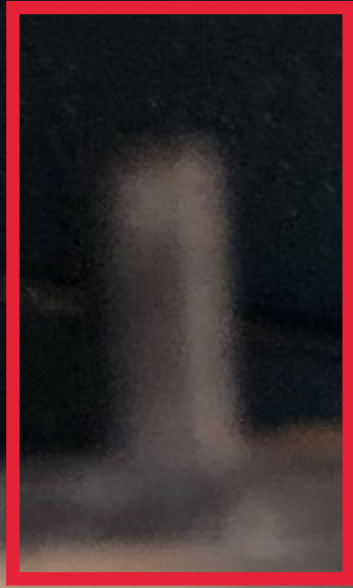


RED RECTANGLES, ANOTHER SOURCE OF RATTLES. AGAIN, APPLY SMALL AMOUNT OF GREASE OF YOUR CHOICE IN THESE AREAS TO WIPE OUT REMAINING SOURCE OF RATTLES.

FAN SPEED SWITCH, REMOVED. WILL FEEL MUCH MORE QUALITY AND WILL NOT RATTLE ANYMORE AFTER THESE STEPS!!

Uhu Patafix APPLIED TO THSE AREAS.

APPLY SOME GREASE ON THE PINS THAT GO IN THSE HOLES



SEE PREVIOUS NOTE FOR RED RECTANGLES

LAST STEP! FOLLOW THESE STEPS, TAKE YOUR TIME. PUT EVERYTHING BACK TOGETHER IN REVERSE ORDER AND YOU ARE GOOD TO GO NOW RATTLE FREE. YOU MAY NOTICE THAT PORSCHE APPLIED A TINY AMOUNT OF GREASE IN SOME AREAS SO IT LOOKS LIKE THEY MAY HAVE TRIED TO DO SOME RATTLE RESOLUTION BUT NOWHERE NEAR ENOUGH.



THESE WILL SLIDE INTO THE NEWLY GREASED CHANNELS AND HELP SOLVE YOUR RATTLE ISSUES.