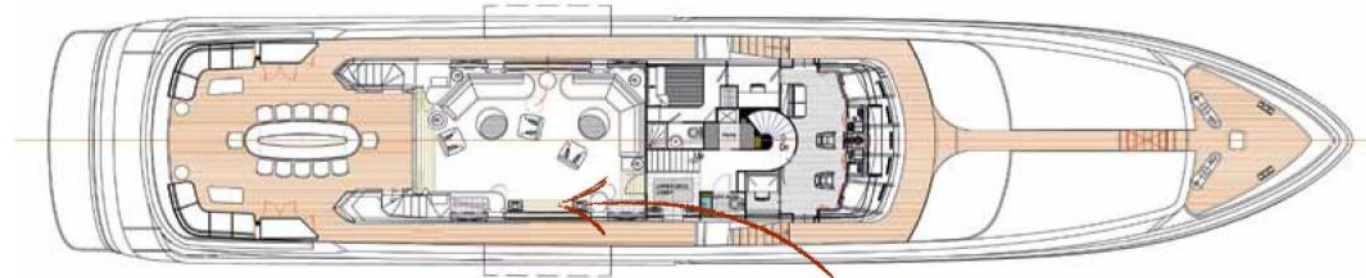


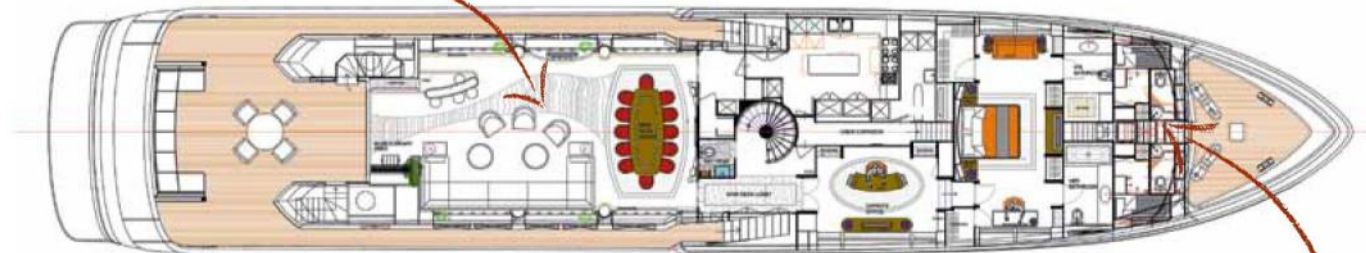
Five metres of yellow sunbed hides
4.2 metres of Rescue RIB on the Sundeck

The Spa pool circle is echoed by the seating and table area, set in a single varnished teak frame



A Mermaid tail pattern in the saloon carpet welcomes guests to the formal dining area

The sunlounge has large sliding glass doors both sides to access drop-down balconies in the bulwarks. Similar doors aft open onto outside dining



Clever VIP arrangement has two entrances with separating wall sliding out from between the bathrooms

An upper level of crew quarters adjoins the owner's apartment forward





SPECIFICATIONS

Length: 46.57m (152' 9")

Beam: 8.74m (28' 8")

Draft: 2.60m (8' 6")

Year Built: 2013

Builder: Cantiere Di Pisa

Stabilisers at anchor: Yes

Stabilisers underway: Yes

Wi-Fi: Yes

Deck Jacuzzi: Yes

Air conditioning: Yes

Total Guests (Sleeping): 12

Total Guests (Cruising): 14

Number of Cabins: 6

Configuration: 4 Double, 2 Twin

Total Crew: 10

Captain's Name: Barnaby Dennen

Captain's Nationality: British

Tenders & Toys:

1 x 6.5m V-Type custom jet tender

1 X Jetski FX Cruiser

2 x Seabobs F5

Water skis

Towing Toys

Inflatables

Snorkelling gears