

**Disclaimer:** This installation guide is intended to clarify the install process of your new Soul Performance Products components. Please take proper precautions and safety measures when working on your vehicle and perform this work at your own risk



- (2) Remote Valve Key Fobs
- (2) Bags of Vacuum Hose
- (1) Bag of T-fittings and connectors
- (10) Black Zip Ties
- (1) Pig Tail Connector
- (1) Valve Control Box

Packing Sign Off \_\_\_\_\_

Shipped on \_\_\_/\_\_\_/\_\_\_\_\_



**Pictured Left:** Gain access to the engine compartment of your car. In this case on the Cayman, lift the rear hatch and remove the carpeting above the engine.

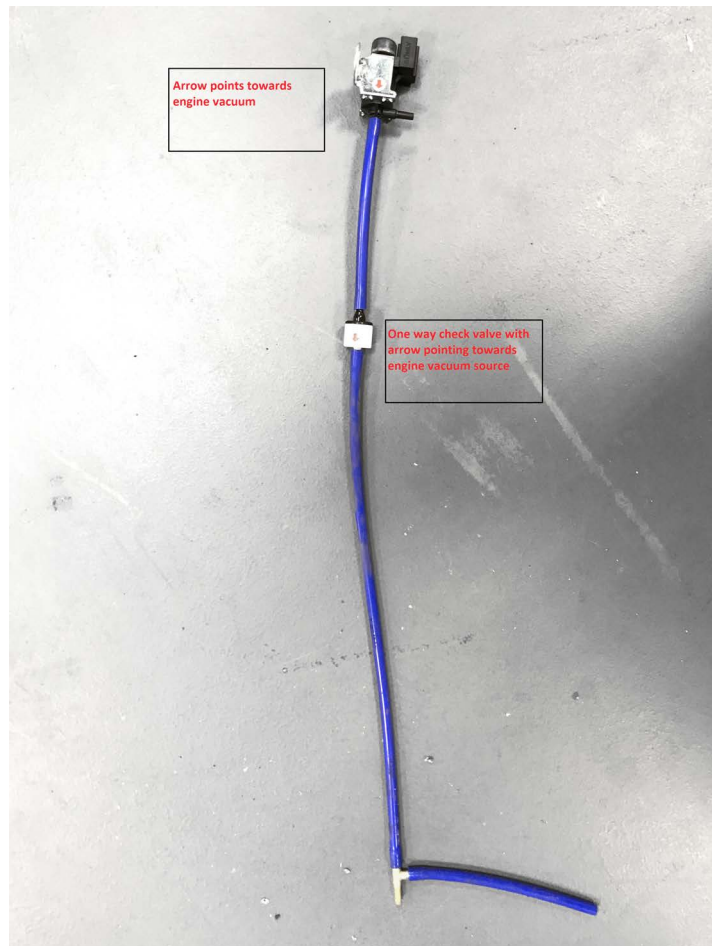
**Pictured Right:** Remove the engine compartment lid by taking out the mounting hardware. In this case, there were 5 torx bolts holding it in place.



**Pictured Left:** Remove the engine compartment lid

**Pictured Right:** Locate a constant engine vacuum source. We chose this one below the intake on the end of the engine nearest the rear of the car.





**Pictured Left** You can either assemble this section on the ground as shown, or install piece by piece in the engine bay.

**Pictured Below:** The black vacuum hose at the "12" position is the factory vacuum hose

At the "3" position is the looped vacuum hose that goes from the "T" junction to the factory solenoid you located on the previous page

At the "6" position is the long tube that leads up to the supplied solenoid as shown on the previous page



**Pictured left:** After connecting the vacuum tubing below the intake, route the long portion of the tubing with the check valve installed around to the front of the engine (closest to the engine bay bulkhead) and install the supplied solenoid on the loose end.



**Pictured Left:** In this photo, the orientation is that the bottom of the picture is towards the front of the car and the top of the photo is towards the rear.

Install the supplied solenoid to the location shown. On the 987.2 this mounting position is not used from the factory, that is where we decided was the best place to attach the supplied solenoid.



**Pictured Left:** Running the vacuum line from the front of the engine towards the rear, be careful to keep the line away from the shift linkages and any other moving parts.



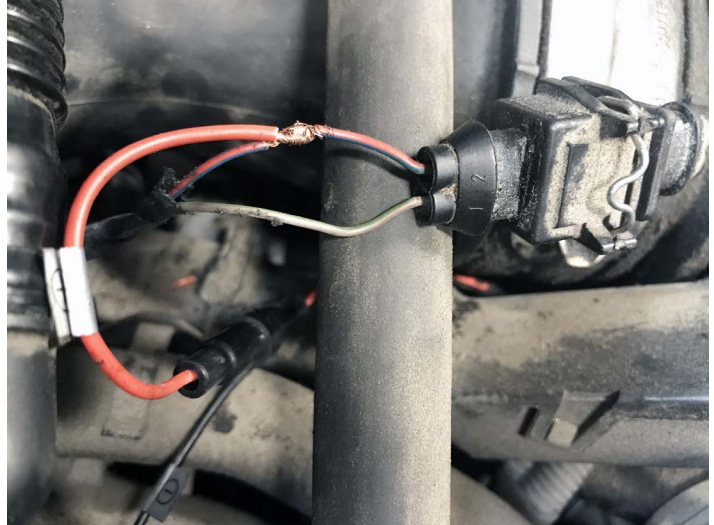
**Pictured Left:** After passing the transmission the vacuum line should exit here, ready to be installed onto the valve.

**Pictured Right:** The newly run vacuum line attached to the valve on your new Soul Performance Products Exhaust. We chose to tuck our vacuum tubing behind the factory heat shields, you can do it this way or another way of your choosing.





**Pictured Left:** Find a key hot 12V power source to tap into. Cut back any heat shielding/wrap to expose the wires.

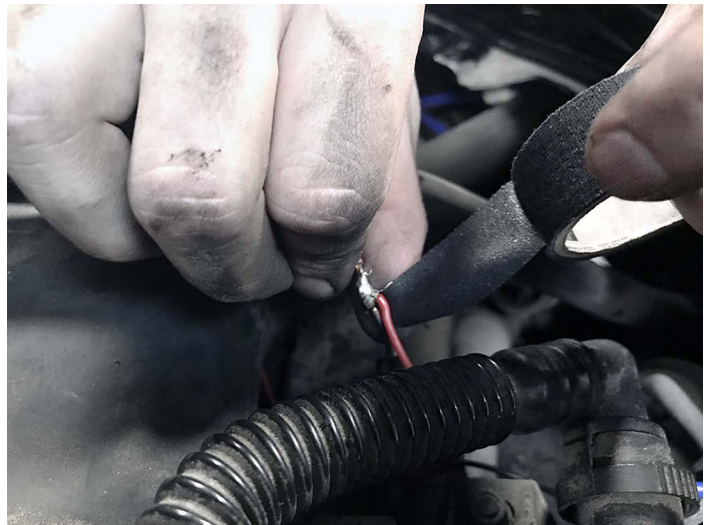


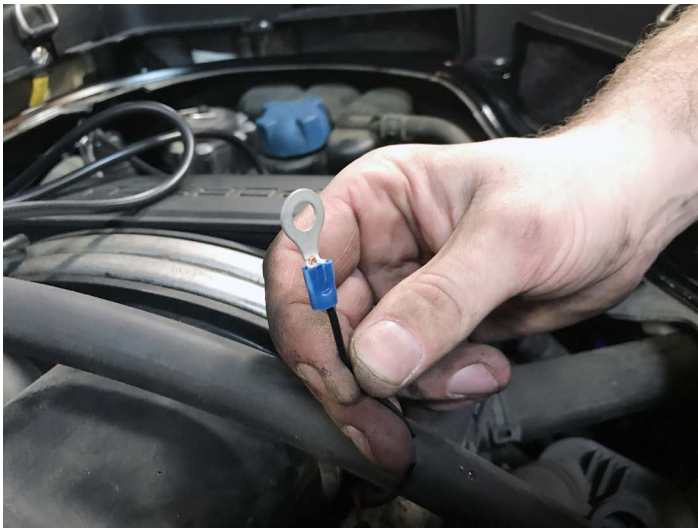
**Pictured Right:** Splice valve controller 12V power to the key hot 12V source of your choice



**Pictured Left:** Securely solder or crimp the power connection

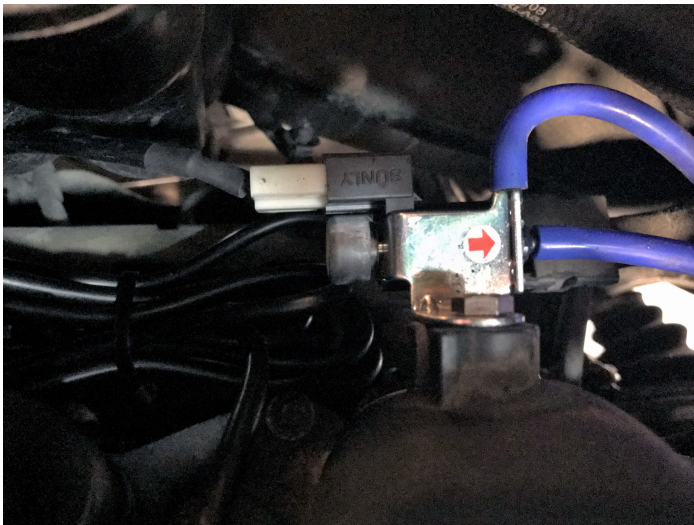
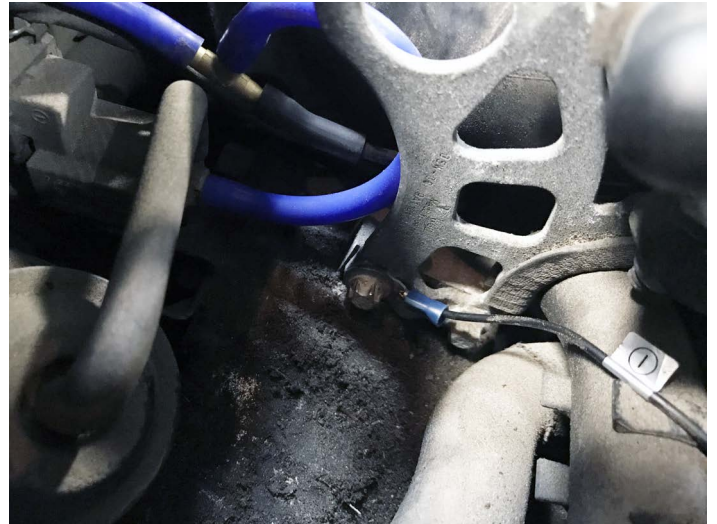
**Pictured Right:** Shrink wrap or wrap the newly created electrical connection





**Pictured Left:** Crimp eyelet to the ground wire on the valve controller

**Pictured Right:** Attach the ground to the engine or frame of the car. Make sure that the connection point is clear of any rust or grease.



**Pictured Left:** Neat installation with proper cable management

**Pictured Right:** Find a position of your choosing to mount the valve controller box



You have now successfully completed the installation of your new Soul Performance Products valve controller! Thank you for your business and if you have any questions during/after the installation please do not hesitate to call or email at the details below.

**SOUL PERFORMANCE PRODUCTS**

2300 Maryland Road | Suite B

Willow Grove, PA 19090

(267) 818-3201 | Office

[customerservice@soulpp.com](mailto:customerservice@soulpp.com)