

Road Racing / Autocross

3012



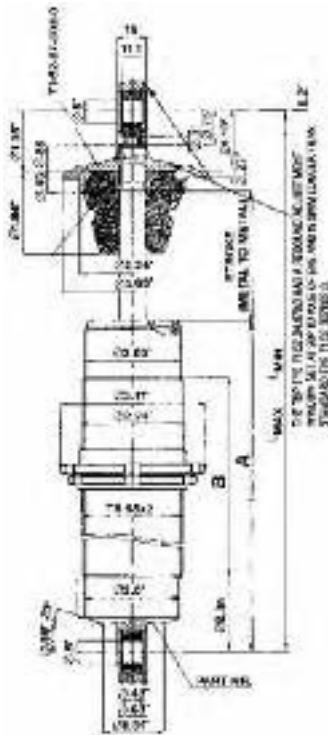
The 3012 series features a threaded aluminum-body, external double adjustability and a high pressure gas mono-tube design, ensuring optimum performance. Our patented mono-tube design allows for independent adjustments to the rebound and compression forces. All damping adjustments are made at the piston, eliminating the additional weight and packaging complications of an external reservoir. The 3012 series offers one of the broadest adjustment ranges in the industry, eliminating the need of constant revalving procedures from track to track.

The rebound adjustment is made at the top of the shock while the compression is made by full extending the shock and turning the rod.

STYLES AVAILABLE

The 3012 series dampers are available in either one of two standardized styles. The part numbers ending in an even number are supplied with the standard eye, which has the rebound adjustment window on axis to the mounting eye. The dampers ending in an odd number are supplied with the rebound adjustment window 90 degrees to the axis of the eye. Please note that the eye supplied with the odd numbered dampers increases the maximum and minimum dimension of the damper 5mm (0.2").

Besides the 3012 shock, there is a steel bodied version, the 3011 series also available. In addition, a rebound only adjustable 3014 series is available in the same lengths. Custom mountings and lengths are also available.



LENGTHS AVAILABLE

Part Number	Stroke	Max L	Min L	A
1600	50mm	261mm	211mm	165mm
1602	55mm	271mm	216mm	170mm
1604	60mm	281mm	221mm	175mm
1606	65mm	291mm	226mm	180mm
1608	70mm	301mm	231mm	185mm
1610	75mm	311mm	236mm	190mm
1612	80mm	321mm	241mm	195mm
1614	85mm	331mm	246mm	200mm
1616	90mm	341mm	251mm	205mm
1618	95mm	351mm	256mm	210mm
1620	100mm	361mm	261mm	215mm
1622	105mm	371mm	266mm	220mm
1624	110mm	381mm	271mm	225mm
1626	115mm	391mm	276mm	230mm
1628	120mm	401mm	281mm	235mm
1630	125mm	411mm	286mm	240mm
1632	130mm	421mm	291mm	245mm
1634	135mm	431mm	296mm	250mm
1636	140mm	441mm	301mm	255mm
1638	145mm	451mm	306mm	260mm
1640	150mm	461mm	311mm	265mm
1642	155mm	471mm	316mm	270mm
1644	160mm	481mm	321mm	275mm
1646	165mm	491mm	326mm	280mm
1648	170mm	501mm	331mm	285mm
1650	175mm	511mm	336mm	290mm
1652	180mm	521mm	341mm	295mm
1654	185mm	531mm	346mm	300mm
1656	190mm	541mm	351mm	305mm
1658	195mm	551mm	356mm	310mm
1660	200mm	561mm	361mm	315mm
1662	205mm	571mm	366mm	320mm
1664	210mm	581mm	371mm	325mm
1666	215mm	591mm	376mm	330mm
1668	220mm	601mm	381mm	335mm
1670	225mm	611mm	386mm	340mm
1672	230mm	621mm	391mm	345mm

Stroke	Max L	Min L	A
1.97"	10.28"	8.31"	6.50"
2.17"	10.67"	8.50"	6.69"
2.36"	11.06"	8.70"	6.89"
2.56"	11.46"	8.90"	7.09"
2.76"	11.85"	9.09"	7.28"
2.95"	12.24"	9.29"	7.48"
3.15"	12.64"	9.49"	7.68"
3.35"	13.03"	9.69"	7.87"
3.54"	13.43"	9.88"	8.07"
3.74"	13.82"	10.08"	8.27"
3.94"	14.21"	10.28"	8.46"
4.13"	14.61"	10.47"	8.66"
4.33"	15.0"	10.67"	8.86"
4.53"	15.39"	10.87"	9.06"
4.72"	15.79"	11.06"	9.25"
4.92"	16.18"	11.26"	9.45"
5.12"	16.57"	11.46"	9.65"
5.31"	16.97"	11.65"	9.84"
5.51"	17.36"	11.85"	10.04"
5.71"	17.76"	12.05"	10.24"
5.91"	18.15"	12.24"	10.43"
6.10"	18.54"	12.44"	10.63"
6.30"	18.94"	12.64"	10.83"
6.50"	19.33"	12.83"	11.02"
6.69"	19.72"	13.03"	11.22"
6.89"	20.12"	13.23"	11.42"
7.09"	20.51"	13.43"	11.61"
7.28"	20.91"	13.62"	11.81"
7.48"	21.30"	13.82"	12.01"
7.68"	21.69"	14.02"	12.20"
7.87"	22.09"	14.21"	12.40"
8.07"	22.48"	14.41"	12.60"
8.27"	22.87"	14.61"	12.80"
8.46"	23.27"	14.80"	12.99"
8.66"	23.66"	15.0"	13.19"
8.86"	24.06"	15.20"	13.39"
9.06"	24.45"	15.39"	13.58"

Valving Code	Spring Rates
B16	up to 250 lbs./in.
B23	250-1500 lbs./in.
B53	500-2000 lbs./in.
B83	650-3500 lbs./in.