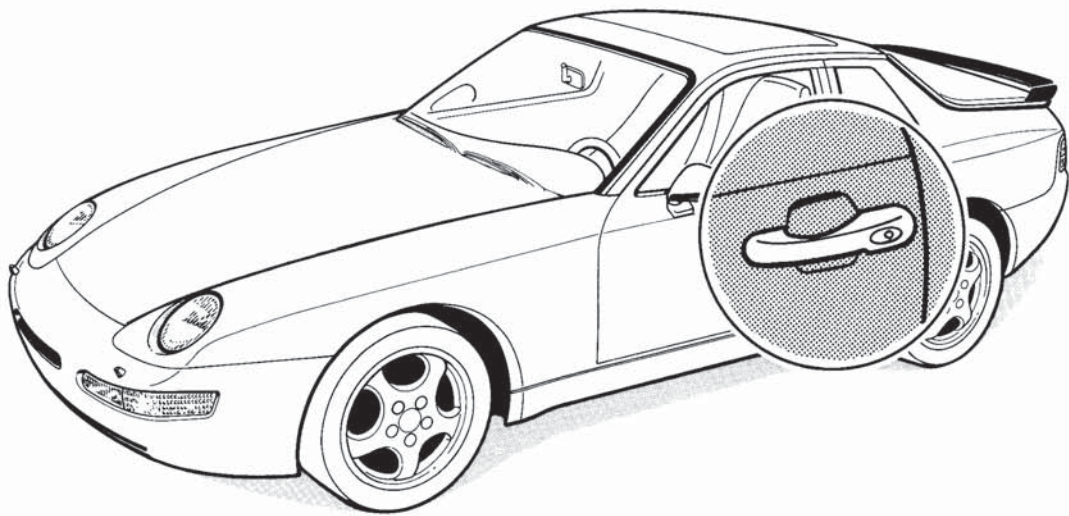
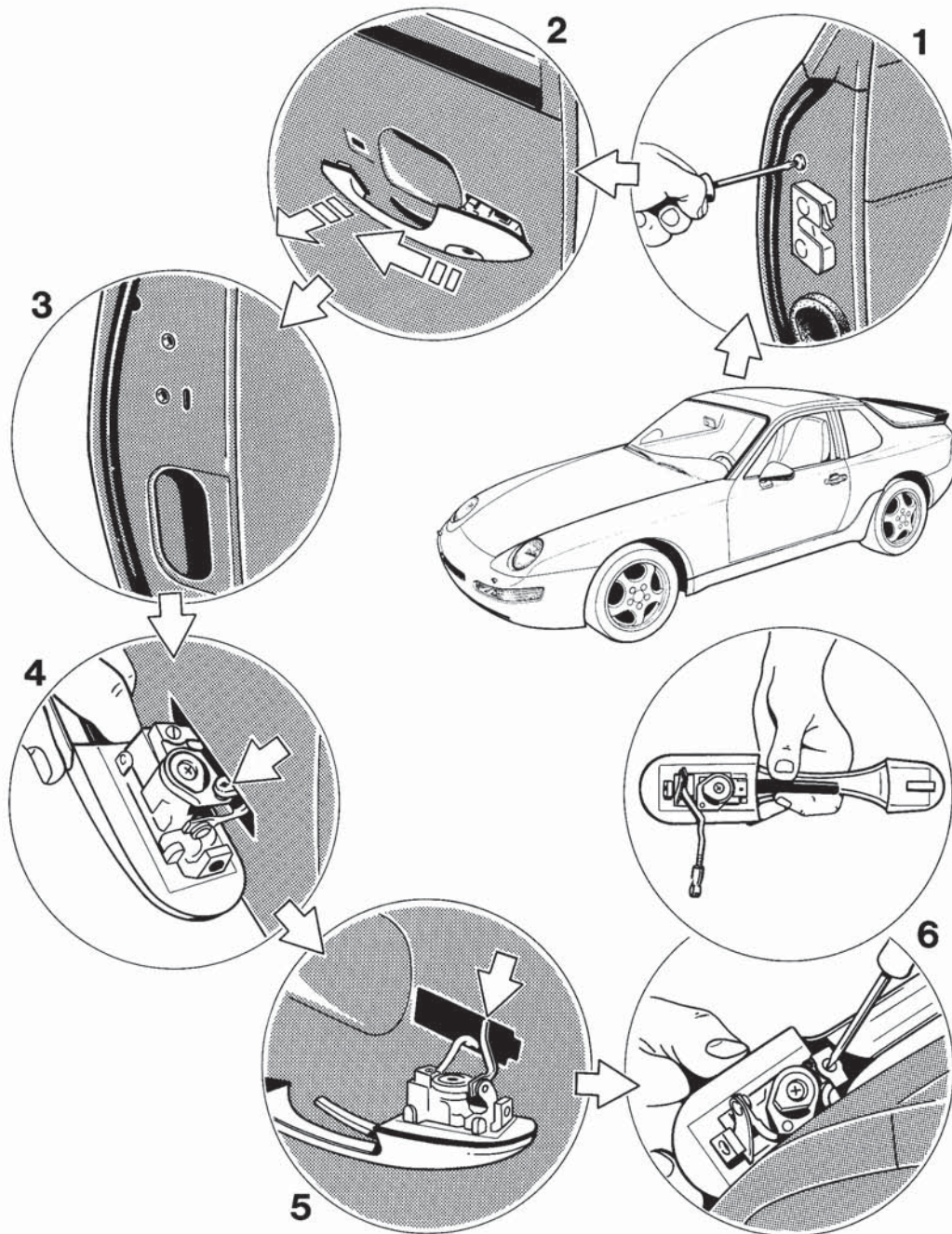


**Removing and fitting door outer handle**

807 - 57

## Removing and fitting door outer handle

### Removing the door outer handle



## Removing and fitting door outer handle

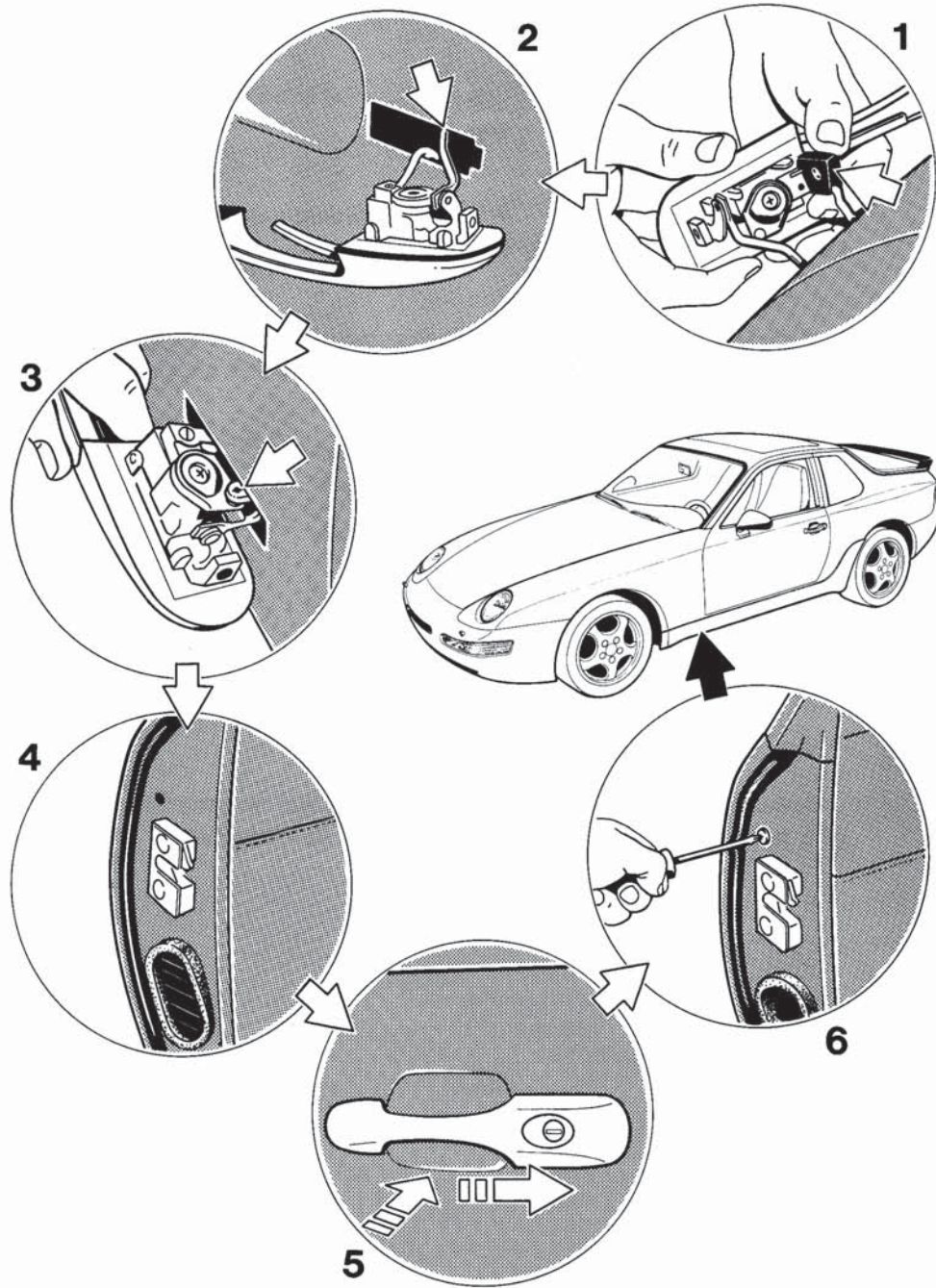
### Removing the door outer handle

No.	Operation	Instructions
1	Release mounting screw of door outer handle	Unscrew mounting screw of door outer handle from door frame.
2	Disengage door outer handle from door	Push door outer handle forward and take out of door hole pattern.
3	Release mounting of door lock outer section and remove plastic grommet for forced-air venting	Undo socket hex head screws for mounting of door lock outer section and pull plastic grommet for forced-air venting off the door.
4	Unclip intermediate section from door outer handle	
5	Unclip deflection lever at door lock inner section	Unclip return lever at door lock inner section (Deflection lever is accessible across door aperture for forced-air vent).
6	Undo microswitch at door outer handle	Screw out wire retainer mounting screw and unclip microswitch from door outer handle.



### Removing and fitting door outer handle

#### Fitting the door outer handle



## Removing and fitting door outer handle

### Fitting the door outer handle

No.	Operation	Instructions
1	Screw microswitch to door outer handle	Clip microswitch to door outer handle and screw wire retainer screw into place.
2	Clip deflection lever to door lock inner section	Clip return lever to door lock inner section (Deflection lever is accessible across the door aperture for the forced-air vent).
3	Clip intermediate section to door outer section	
4	Fit door lock outer section and insert plastic grommet for forced-air vent	Insert door lock outer section and bolt in place with socket head bolts. Insert plastic grommet for forced-air vent into door aperture.
5	Engage door outer handle into door	Insert door outer handle into door hole pattern and push to the rear.
6	Fit mounting screw of door outer handle	Fit mounting screw of door outer handle.