



E: info@melett.com
W: www.melett.com



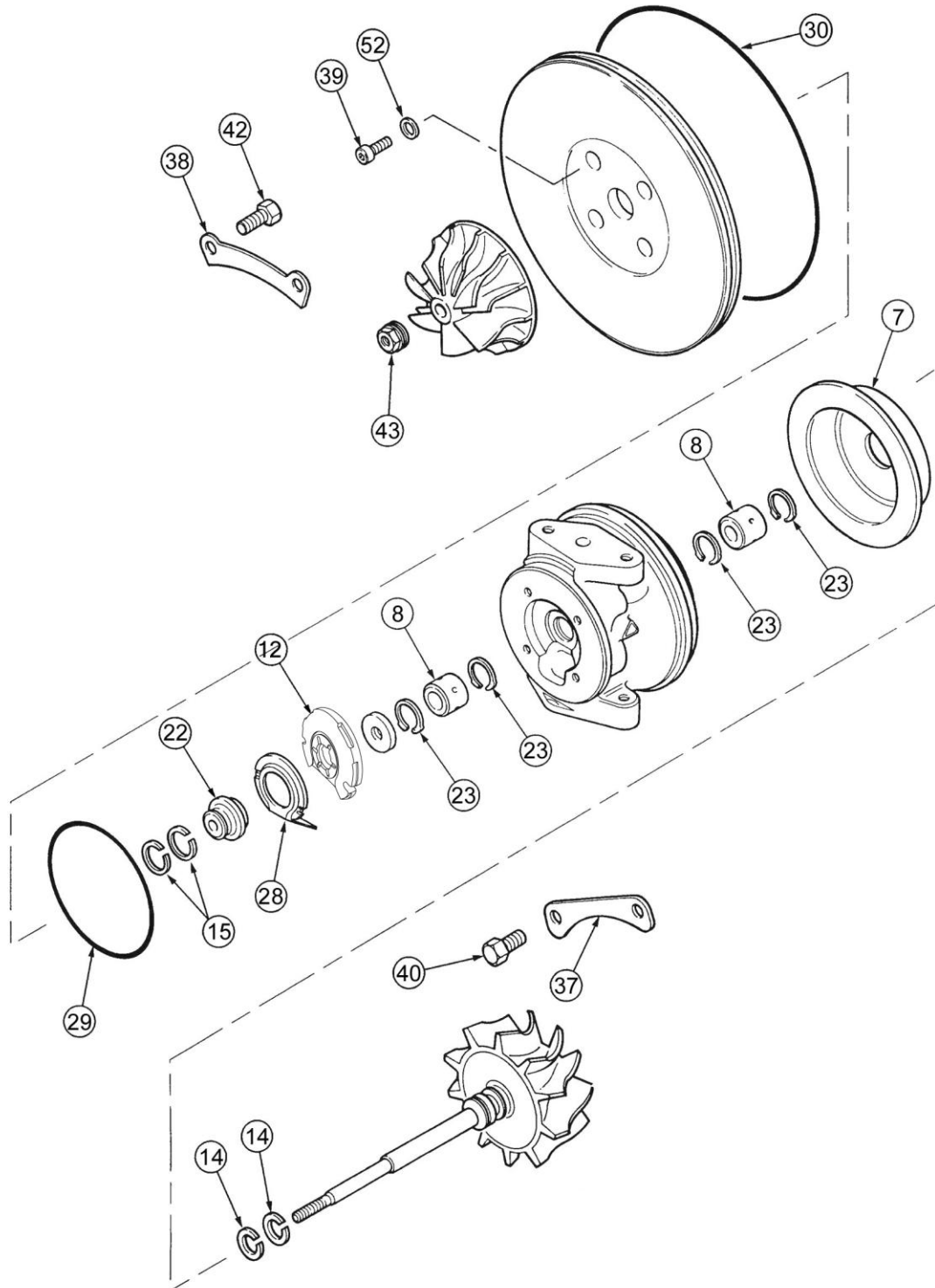
Borg Warner

K26

Type Turbos

K26 Type

Common Service Parts



K26 Type

Repair Kits and Service Parts

All parts are available for purchase as individual components or in the following popular Repair Kits

Key	Part number	Description	Qty in Turbo	1301-026-750	1301-026-751	1301-026-752
8	1301-027-101	Journal Bearing K27 (Grooved)	2	2	2	2
12	1301-027-321	Thrust Bearing K26/K27 (360)	1	1	1	1
14	1301-027-161	Piston Ring K27 T/End (1.2mm	2	2	2	2
15	1301-027-170	Piston Ring K2 Comp End 19mm	2	2	2	
15	1301-027-171	Piston Ring K2 Comp End 14mm	1		1	1
23	1100-040-140	Retaining Ring J-Brg	4	4	4	4
29	1250-030-150	O Ring (Insert)	1	1	1	1
30	1301-026-150	O Ring (K26 Comp Cover)	1	1	1	1
30	1301-027-150	O Ring (K27 Comp Cover)	1	1	1	1
39	1301-026-620	Bolt (K26/27 Seal Plate)	4	4	4	4
40	1301-026-600	Bolt (K26 Turbine)	6	6	6	6
42	1301-026-610	Bolt (K26 Compressor)	8			
43	1301-027-351	Shaft Nut	1	1	1	1
52	1301-027-581	Washer (K27 Seal Plate)	4	4	4	4

Description of Repair Kits available

- 1301-026-750 Repair Kit K26 (19mm)
- 1301-026-751 Repair Kit K26 (19 & 14mm Universal)
- 1301-026-752 Repair Kit K26 (14mm)

For oversize bearings and piston rings, see Page 52

K26 Type

Oversize Repair Parts

Journal Bearings

K26		Grooved
Standard	Standard	1301-027-101
+ 0.005"	Standard	1301-027-115
+ 0.010"	- 0.010"	1301-027-101
+ 0.010"	Standard	1301-027-125
Standard	- 0.010"	1301-027-128

Piston Rings

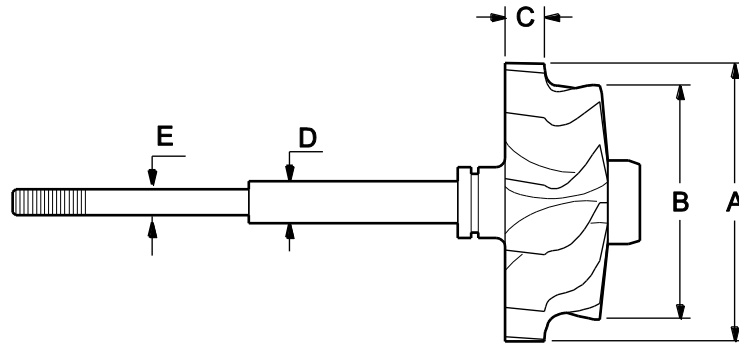
14mm		Turbine	Compressor
OD	Width		
Standard	Standard		1301-014-160
Standard	Standard		
+ 0.010"	Standard		1301-014-182
+ 0.010"	+ 0.010"		1301-014-183
Standard	+ 0.010"		1301-014-184

19mm		Turbine	Compressor
OD	Width		
Standard	Standard	1301-027-161	
+ 0.010"	Standard	1301-027-182	
+ 0.010"	+ 0.010"	1301-027-183	
Standard	Standard		1301-027-170
+ 0.010"	Standard		1301-027-185
Standard	Standard		1301-027-171

K26 Type

Major Replacement Parts

Shaft and Wheel



OE Number	Melett Part No.	Inducer Diameter A	Exducer Diameter B	Tip Height C	Journal Bearing D	Comp. Wheel Bore E	Blades	Type of Shaft
5326-120-5001	1301-026-435	64.3	54.5	10.1	10	7	12	Straight
5326-120-5002	1301-026-436	64.3	54.5	10.1	10	7	12	Straight