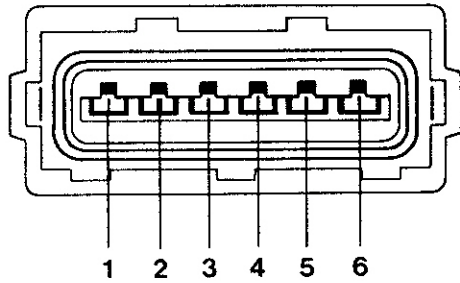
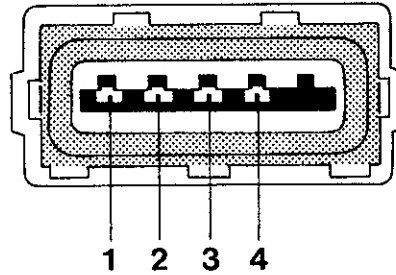


PLUG CONNECTIONS

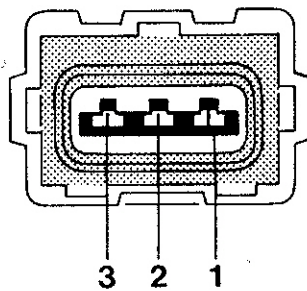
Throttle switch (view of disconnected plug connector)



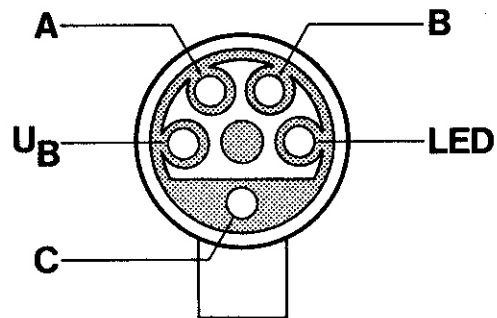
Air flow sensor (view of disconnected plug connector)



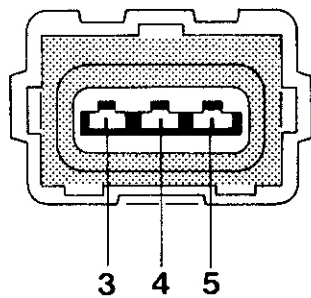
Reference mark/rpm sensors (view of disconnected plug connector)



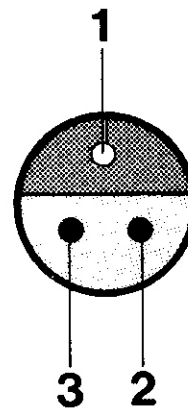
Test socket



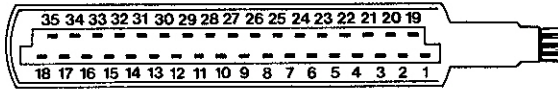
Idle actuator (view of disconnected plug connector).



Oxygen sensor

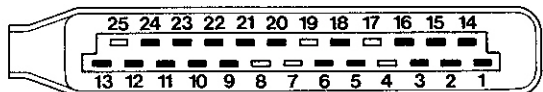


DME control unit



- | | |
|---|--|
| 1 - Ignition impulse at ignition coil terminal 1 | 14 - ti-signals, injection valves 3 + 4 |
| 2 - Throttle switch idle contact terminal 6 | 15 - ti-signals, injection valves 1 + 2 |
| 3 - Full-load signal from K/CP control | 16 - Ground |
| 4 - Starting signal (ignition lock - 50) | 17 - Ground |
| 5 - Ground and shielding, reference mark sensor | 18 - Voltage supply relay G5 - 87 |
| 6 - Air flow sensor - 4 (NTC I) | 19 - Ground |
| 7 - Air flow sensor - 2 (air flap potentiometer) | 20 - Ground routing relay G5-85b |
| 8 - RPM sensor | 21 - 4-pole separation point terminal 2 tachometer - 1 K/CP - terminal 9 |
| 9 - Air flow sensor - 3 | 22 - Air flow sensor - 1 (NTC I) |
| 10 - Map change (on for Switz., Swed., Austria, New Zeal., Cal., Japan) | 23 - Shielding (rpm sensor/oxygen sensor) |
| 11 - 4-pole separation point terminal 1 (consumption indicator) | 24 - Oxygen sensor (USA/lead-free engines) |
| 12 - Test socket (A) (USA lead-free engines) | 25 - Reference mark sensor |
| 13 - NTC II | 26 - Reference mark sensor |
| | 27 - RPM sensor |
| | 28 - Ground |
| | 29 - A/C compressor (+) |
| | 30 - Altitude compensation box (USA/lead-free engines) map re-switching plug |
| | 31 - Trigger signal for K/CP control |
| | 32 - Input TD* final stage of K/CP von control |
| | 33 - Idle actuator - 3 |
| | 34 - Idle actuator - 5 |
| | 35 - Supply voltage relay G5 - 87 |

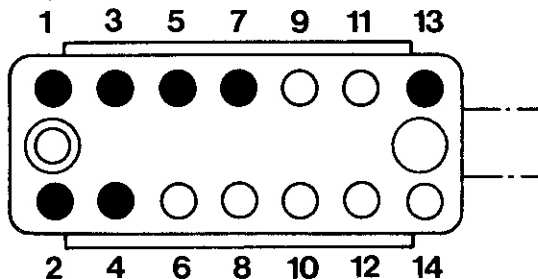
K/CP control unit



- 2 - Timing valve (output)
- 3 - LED
- 5 - Vacuum pipe pressure signal (pressure indicator output)
- 6 - U (Battery)
- 9 - Ignition signal (input)
- 10 - Ignition signal shield
- 11 - Knock sensor
- 12 - Ground, knock sensor shield
- 13 - Knock sensor
- 14 - Vehicle ground
- 16 - Ignition signal (output)
- 18 - Test socket / full-load signal (output)
- 20 - Vehicle ground (electronic ground connection)

- 21 - Angle sensor - supply
 - 22 - Angle sensor - pick-up
 - 23 - Angle sensor ground, angle sensor line shielding
 - 24 - tr-signal / input
- } Throttle Position

Plug connector in engine compartment (14 pole)



- 1 - Ignition coil terminal 1
- 2 - DME relay terminal 87
- 3 - DME relay terminal 87
- 4 - DME relay terminal 87 a
- 5 - DME relay terminal 85 b
- 7 - Ignition lock terminal 50
- 13 - A/C compressor +