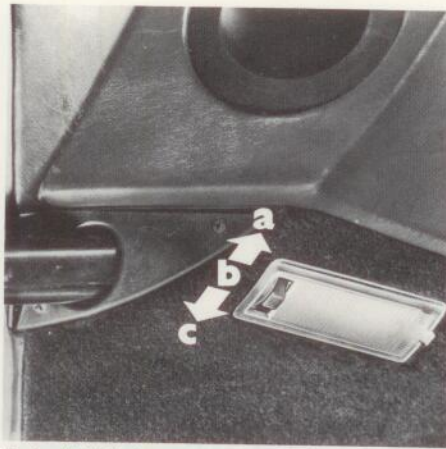
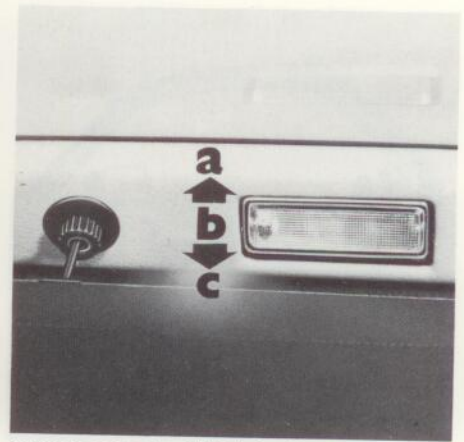


Interior light in headlining



Footwell light in lower part of door trim



Luggage compartment light in hatchback

Interior lights


The interior lights, which are independent from one another, come on, with the switch in the appropriate position, as soon as a door or the hatchback is opened.

The interior lights go out after approx. 30 seconds after the doors or the hatchback are closed. The lights go out immediately if the ignition is switched on or the vehicle locked with the key.

The **interior lights** have the following switch positions:

- a – light comes on only when a door or the hatchback is opened
- b – light switched off permanently
- c – light switched on permanently

The interior light in the headlining and the luggage compartment light are switched on and off by tilting the lamp glass. The footwell lights are operated by the switch integrated in the light.

S-key (illuminated)		
	Doors	Activate alarm by locking. Deactivate alarm by unlocking.
	Luggage compartment	Activate alarm by closing rear lid, then turn key counter-clockwise. Deactivate alarm by unlocking rear lid.
	Ignition/steering	Lockable
	Glove compartment	Lockable
	Fuel filler cap	Lockable

Anti-theft alarm

The 3 keys supplied with vehicles equipped with an anti-theft alarm system are longer.

The alarm system is activated automatically when the doors are locked with one of these keys. When the hatchback is closed, the alarm system is not activated until the key is turned further to the left.

The alarm system is switched off automatically when a door or the hatchback is opened with the S-key. If the hatchback is opened while the alarm system is switched on, the key must be turned to the left to reactivate the alarm system.

If the driver's or passenger side door, engine compartment hood or the hatchback is opened,

or if the ignition is switched on while the alarm is activated a specially protected siren will sound for about 100 seconds. The engine cannot be started. Additionally the fog lights and stop lights will flash intermittent for the same time period.

Keep plastic tag with key number in a safe place. Do not leave it in the vehicle.

NEVER invite car theft!

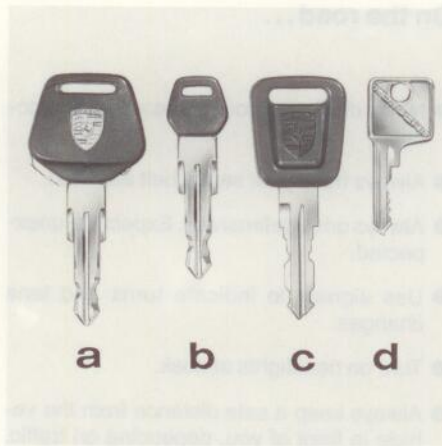
An unlocked car with the key in the ignition switch invites car theft.

A steering wheel lock and a gong alarm are standard equipment in your Porsche. The gong will sound if you open the driver's door while the key is still in the ignition lock. It is your reminder to pull the key out of the ignition lock and to lock the doors.

WARNING

Always remove the ignition key, especially if children are left unattended in the vehicle. Unsupervised use of any vehicle key may cause serious personal injury.

NEVER leave your vehicle unattended with the key in the ignition lock. Take the key and lock the doors.



- a Key with built-in flashlight
- b Flat key
- c Rear glove compartment key
- d Key for lockable wheel nuts

Keys

Three keys are supplied with the vehicle. Each fits the ignition lock, door locks, hatchback lock, fuel filler cap lock and glove compartment lock.

There is one flat key which you can keep in your purse or wallet, for instance, as an "emergency key". If you remove the plastic head of the flat key, you can clip on an illuminated plastic handle (available from your Porsche dealer). Vehicles with a rear seat glove compartment receive two additional keys for the compartment lock.

WARNING

NEVER remove the key from the steering lock while you are driving or as the car is rolling to a stop. The steering column will lock when you remove the key, and you will not be able to steer the car. This may result in a serious accident.

Because of the symmetrical shape of the key shaft, there is no "wrong" way of inserting the key in the locks.

The new format of the keys makes unauthorized duplication of the keys virtually impossible. This means, however, that you yourself will not be able to get replacement keys cut, unless ordered from the manufacturer.

For the lockable wheel nuts, three identical keys, are included. When taking the vehicle to your Porsche dealer or to a workshop for wheel or tire service, remember to leave one key with the service attendant.

In case of loss, duplicate wheel lock keys cannot be furnished by your Porsche dealer. Do not leave these keys in the vehicle. Keep them in a safe place.

See "Lockable wheel nuts" for details.

NOTE: It is a good idea to also keep a record of your key numbers in your wallet together with your license.

Dear Porsche-Owner

A lot has gone into the manufacture of your Porsche, including advanced engineering, techniques, rigid quality control and demanding inspections. These engineering and safety features will be enhanced by you...

the safe driver...

who knows his car and all controls, who maintains his vehicle properly, who uses his driving skills wisely, and always drives within his own capabilities and his level of familiarity with his vehicle.

You will find helpful hints in this manual on how to perform most of the checks listed on these pages. If in doubt, have these checks performed by your Porsche dealer.

Before going on a trip...

First things first

- Turn the engine off before you attempt any checks or repairs of the vehicle.
- Be sure tires are inflated correctly. Check for damage and tire wear.
- See that wheel bolts are properly tightened and not loose or missing.
- Check engine oil level, add if necessary. Make it a habit to have engine oil checked with every fuel filling.
- Check coolant level to assure sufficient engine cooling.
- Be sure you have a well charged battery.
- Check brake fluid level. If too low, have brake system checked.
- Replenish windshield washer fluid.
- Check if engine hood is latched safely.
- Replace worn or cracked wiper blades.
- See that all windows are clear and unobstructed.

- Keep air intake slots and area between engine hood and windshield free of snow and ice, so that the heater and the windshield wipers work properly.
- Check whether all light lenses are clean.
- Be sure all lights are working and headlights are aimed correctly.
- Check under vehicle for leaks.
- Be sure all luggage is stowed securely.

Emergency equipment

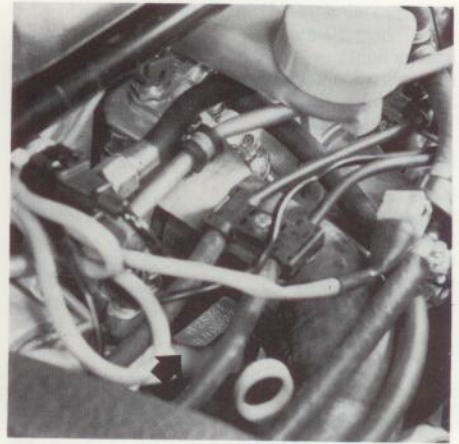
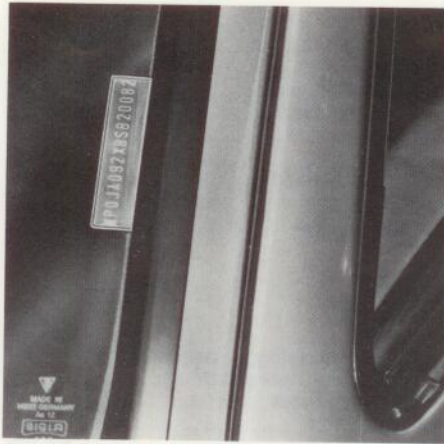
It is good practice to carry emergency equipment in your vehicle. Some of the things you should have are: window scraper, snow brush, container or bag of sand or salt, emergency light, small shovel, first-aid kit, etc.

Vehicle Identification

When ordering spare parts or submitting inquiries, always quote vehicle identification and engine number to assure correct and prompt service.

By law, labels are attached to some vehicle parts, which also bear the vehicle identification number.

Do not remove the labels.



Radio number

The radio number is beneath the ashtray cover. The number is revealed by removing the ashtray.

Vehicle identification number

In accordance with Federal Safety Regulations, the vehicle identification number of your car is located on the left* windshield post and can be seen from the outside.

Engine number

The engine number is stamped on the front reinforcing rib in the top half of the crankcase.

* Throughout this booklet and other Porsche publications applicable to USA vehicles, left is designated as the driver's side of the vehicle, and right as the passenger's side of the vehicle.

Index

A

ABS	26,35
Acceleration kick-down	56
Accelerator pedal	56
Adjusting headlights	95
Air compressor	81
- conditioning	44-46
- cleaner	76
Alternator warning light	35
Anti-freeze	71, 105
Antilock brake system	26, 35
Anti-theft alarm	12
Ashtray/light	47, 94
Automatic garage door	29
- speed control	38
- transmission	54-56
- transmission fluid (ATF)	68

B

Battery	86-87
Brake booster	25
- fluid	75
- pads	57
- parking	24, 55
- pedal	25
- system	24-26
- warning light	24, 35
Break-in-hints	57
Bulbs - replacing	90-94

C

Capacities	105
Car care instructions	61-65
Catalytic converter	98
Cautions	66

Center console	40
Central door locking	13, 41
- warning light system	40
Changing a wheel	82-84
Cigarette lighter	47
Cleaning	61-65
Climate control system	44-46
Clock	47
Clutch	27
Collapsible spare tire	81
Coolant temperature gauge	33
Cooling system	71-73
- air flaps	73
Corrosion prevention	61-65

D

Dashboard	40
Defogging/defrosting	36
Dimensions	103
Directional signals	32, 34, 37
Doors locks	12-13
Driving hints	8-9

E

Electrical system	85-96
Emergency flasher	36
- starting	55, 88-89
Emission control system	97-98
Engine compartment	65
- exhaust	57
- hood release	51
- number	6
- oil	68-69, 105, 106
Engine specifications	101-102
- speed, maximum	53, 57, 101

F

Fan - radiator	33, 73
----------------	--------

Fan switch	45
Filling capacities	105
Flasher - emergency	36
Fog lights	30, 91
Fuel economy	58
- evaporation control	99
- filler cap	59
- gauge	34
- recommendations	59
- tank	59, 105
Fuses and relays	85

G

Gasohol	60
Gas station information	111-113
Gasoline - octane ratings	58-59, 101, 105
Gear ratios	102
Gearshifting	53
Glove compartment	50
Gong	10, 22, 28, 30

H

Hatchback	52
- release	24
Headlights	30, 37, 90-91, 95-96
Headlight dimmer/flasher	37
- washer lever/reservoir	39, 74
- switch	30
Heater/ventilation controls	42-44
High beam/low beam lever/light	32, 37
Hood release	24, 51-52

I/J

Identification plates	6-7
Ignition/steering lock	28
Instrument cluster	28
- illumination	30

Judging by the car you have chosen, you are a motorist of a special breed, and you are probably no novice when it comes to automobiles.

Remember however that, as with any vehicle, you should take time to familiarize yourself with your Porsche and its performance characteristics. Always drive within your own unique capabilities as a driver and your level of experience with your Porsche. Ensure that anyone else driving your Porsche does the same. To prevent or minimize injury, always use your safety belts. Never drink alcohol before or while driving.

This Owner's Manual contains a host of useful information. Please read this manual before you drive your new Porsche. Acquaint yourself with your car's features and know how to operate your Porsche more safely. The better you know your Porsche, the more pleasure you will experience driving your new car.

A separate Warranty and Maintenance booklet explains how you can keep your Porsche in top driving condition by having it serviced regularly.

It also contains detailed information about the warranties covering your Porsche. These warranties are:

"Warranty for new Porsche vehicles", "Warranty against corrosion for new Porsche vehi-

cles", "Warranty for new Porsche vehicle emission control system", "Emissions performance warranty" (USA only), and "California emission control system warranty" (California USA only).

In order to keep your warranty in effect, you must have the vehicle maintained and serviced as prescribed in the Warranty and Maintenance Booklet provided to you at the time of sale.

Always carry your Warranty & Maintenance booklet with you when you take your Porsche to an authorized dealer for service. It provides your Service Adviser with the information he needs and enables him to record each service.

If you sell your Porsche, the Owner's Manual and the Warranty & Maintenance booklet should be left in the vehicle to make all operating safety and maintenance information available to the next owner.

If you change your address or if you bought this Porsche used, be sure to send in a "Notice of Address Change"/"Notice of Used Car Purchase" post card. This card can be found in the Warranty & Maintenance booklet or obtained from your Porsche dealer.

It is in your own interest that we can contact you, should the need arise, in case any adjustments or modifications need to be made to your Porsche to maintain its safety.

For your own protection and longer service life of your car, please heed all operating instructions and special warnings. Ignoring them could result in serious mechanical failure or even physical injury.

We wish you many miles of safe and pleasurable driving in your

PORSCHE