



WKD 92802188 4.3 M 6/87

© Dr. Ing. h. c. F. Porsche Aktiengesellschaft
Printed in Germany

Your car may have all or some of the components described in this manual. Should you find explanations of a feature or equipment not installed in your car, your Porsche dealer will be glad to assist you. Also check with your dealer on other available options or equipment.

Text, illustrations and specifications in this manual are based on the information available at the time of printing.

It has always been Porsche's policy to continuously improve its products. Porsche, therefore, reserves the right to make changes in design and specifications, and to make additions or improvements in its product, without incurring any obligation to install them on products previously manufactured.

IMPORTANT
For your own protection and longer service life of your car, please heed all operating instructions and special warnings. Ignoring them could result in serious mechanical failure or even physical injury.

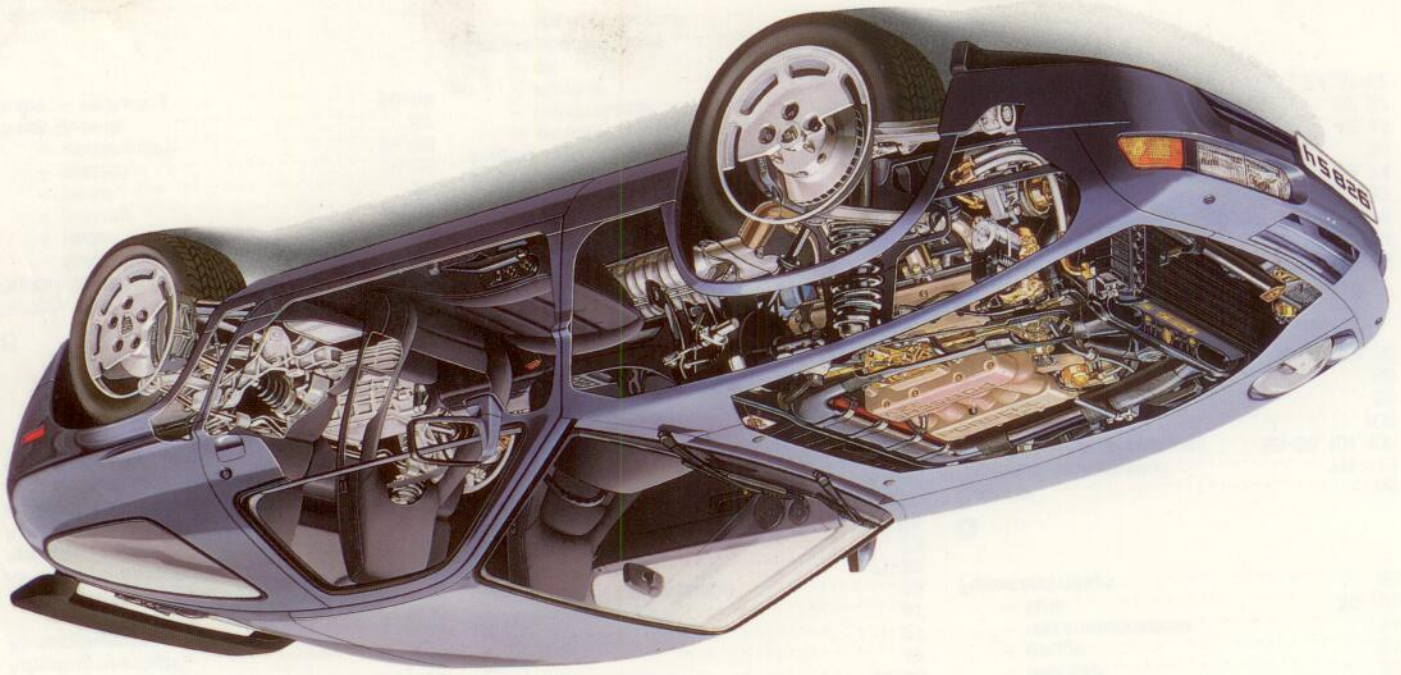
NOTE TO OWNERS

In Canada, this manual is also available in French. To obtain a copy contact your dealer or write to:

NOTE AUX PROPRIETAIRES

Au Canada on peut se procurer un exemplaire de ce Manuel en français auprès concessionnaire ou du:

Volkswagen Canada Inc.
Porsche Customer Assistance/
Assistance à la Clientèle Porsche
1940 Eglinton Ave. East
Scarborough
Ontario M1L 2M2



Warning indicator lights 32-35, 40
 Washer system 39, 74
 Washing the car 61-62
 Wheels 63-64, 77-80, 103
 Wheel changing — nuts, lockable 82-84
 Window switches 15, 40
 Windshield washer reservoir — wiper washer lever 39

W

Vanity mirror 49
 Vehicle care 61-65
 Vehicle identification — label 7
 Ventilation/heater controls 42-45
 Voltmeter 35

V

Undercoating 65, 97
 Unleaded fuel 59, 101, 105
 Upholstery, care of 64

U

Tachometer 31
 Technical data 101-105
 Tires 77-80
 Tire size/pressure 77, 81, 103
 Tool kit 67
 Transmission 53-56, 70, 102
 Trip odometer 30, 32
 Turn signal lights/lever 34, 37, 93

T

Sunroof 48
 Sun visors 49
 Steering lock 28
 Starting hints/engine 29, 97
 Speedometer 32
 Speed control — automatic 38
 Specifications — engine 101-102
 Spare tire — collapsible 81
 Snow chains 79, 103
 Sliding roof — electric 103
 Shift points 53
 Selector lever 54
 — position memory 18
 — heating 17
 Seats, front/rear/electric 16-19
 Safety belts 21-23
 Safe driving hints 8-9

S

Radiator fan 33
 Rear seats 19
 — window defogger/defroster 36
 — window wiper switch 49
 — view mirrors 20
 Refrigerant 46, 105
 Roof rack 52, 103

R

Paint number 7
 Paint damage 62
 Parking brake lever — lights/lever 37, 93
 Performance 104
 Polishing 61-65
 Power steering fluid — windows 15
 Pressure — tires 77, 81, 103

P

Manual transmission 53
 Mirrors 20, 49
 Octane ratings 58-59, 101, 105
 Odometer 30, 32
 Oil changing/checking 68-70
 — filter 69
 — grades 105-106
 — pressure gauge/warning light 35
 — transmission 70
 Oxygen sensor 98

M/O

Luggage compartment 52
 Locks — doors, wheels 12-13, 82
 Lockable wheel nuts 82
 — warning indicator 32-35, 40
 — vanity mirror 49
 — turn signal 37, 93
 — tail 92
 — switch 30
 — stop 92, 93
 — parking 37, 93
 — license plate 94
 — interior 14, 94
 — fog 30, 91, 95
 Lights — ashtray 94

K/L

Leather 64
 Lane changer 37
 Kickdown — acceleration 56
 Keys 10-12, 82
 — lifting points 83-84
 Jack 67, 81, 84
 Intermittent wiper interval 39
 Interior lights 14, 94
 switch/reservoir 39, 74
 Intensive windshield cleaning/

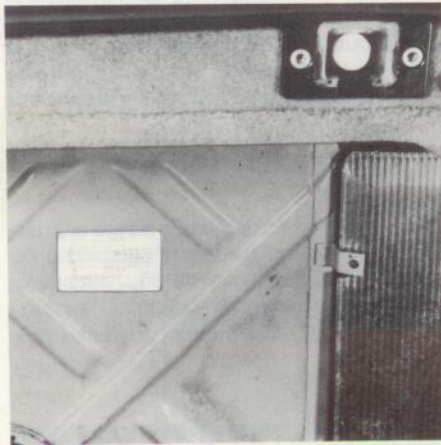
The vehicle identification label is located underneath the luggage compartment floor cover, next to the spare wheel well.

This label contains the following information:

1. Vehicle Identification Number
2. Vehicle Code
3. Engine and Transmission Code
4. Paint and Interior Code
5. Option Codes

A duplicate of this label is in your Warranty and Maintenance booklet.

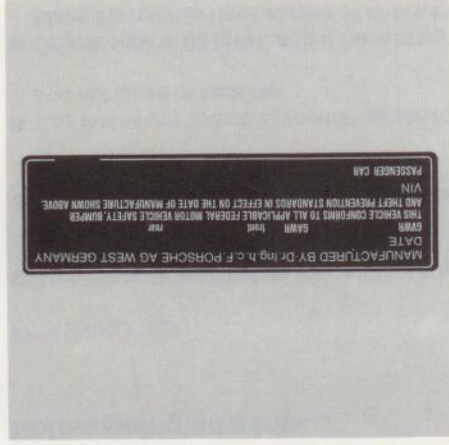
Vehicle Identification Label



The Safety Compliance Sticker is your assurance that your Porsche complies with all Federal Motor Vehicle Safety Standards which were in effect at the time the vehicle was manufactured. It is located on the door sill on the driver's side.

This sticker also shows the month and year of production and the vehicle identification number of your car (perforations) as well as the Gross Vehicle Weight Rating and the Gross Axle Weight Rating.

Safety Compliance Sticker



The paint number sticker is on the doorjamb on the driver's side.

Paint number



- When emergency repairs become necessary, move the vehicle well off the road. Turn on emergency flasher and use other warning devices to alert other motorists. Do not park or operate the vehicle in areas where the hot exhaust system may come in contact with dry grass, brush, fuel spill or other flammable material.
- Make it a habit to have the engine oil checked with every fuel filling.

On the road ...

- Never drive after you have consumed alcohol.
- Always have your safety belt attached.
- Always drive defensively. Expect the unexpected.
- Use signals to indicate turns and lane changes.
- Turn on headlights at dusk.
- Always keep a safe distance from the vehicle in front of you, depending on traffic, road and weather conditions.
- Reduce speed at night and during inclement weather.
- Observe speed limits and obey road signs.
- When tired, get well off the road, stop and take a rest. Turn the engine off. Do not sit in the vehicle with engine idling. See WARNINGS on "Engine Exhaust".
- When parked, always set the parking brake. Move the selector lever to "P" (Automatic transmission) or move the gearshift lever to reverse or first gear (Manual transmission). On hills also turn the wheels toward the curb.

In the drivers seat ...

- Check operation of horn.
- Position seat for easy reach of controls.
- Adjust inside and outside rear view mirrors.
- **Attach your safety belts.**
- Check operation of foot and parking brakes.
- Check all warning and indicator lights with ignition on and engine stationary.
- **Never** leave car idling unattended.
- Lock doors from inside, especially with children in the car.
- To prevent inadvertent opening of doors from inside or outside, drive with locked doors.

The flashlight is powered by a 1.5 Volt button battery. When the beam begins to fade, replace the battery, because **an old battery may leak and damage your clothes.**

The flashlight is on as long as the contact button is depressed.

Two of the keys have a built-in flashlight in the key head. The beam from a small bulb in the key head illuminates the lower part of the key stem.

Key light

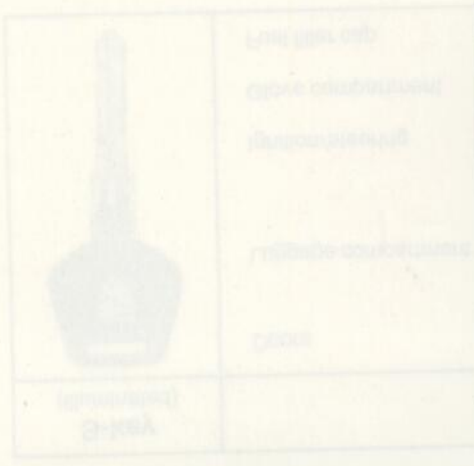
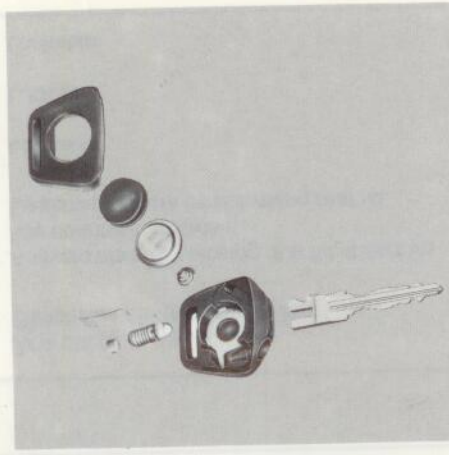
- Record the key numbers and keep them in a safe place, such as your wallet. Do not keep them in the vehicle.
- If you should lose a key, provide your Porsche dealer with the key number and the vehicle identification number to obtain a duplicate key.

For your protection against theft:

The key number of the ignition key is im-pressed on a plastic tag which comes with the keys. Detach this tag and keep it in a safe place.

Key number

1. Use your finger nail or a small screw driver to carefully lift the key handle cover.
2. Insert a new, commercial available battery (1.5 V) in the contact button.
3. Assemble key top as shown in the figure.



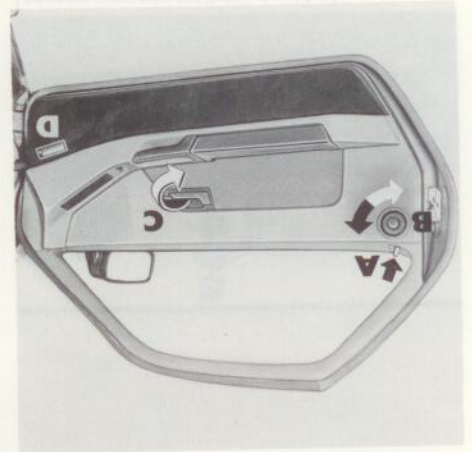
The car is safely locked when locking knob "A" is fully down on both doors. If locking knob "A" is not fully down on one door, open that door again, close it firmly and repeat the locking operation.

On a centrally locked vehicle, the passenger door can also be unlocked and locked from inside by turning locking knob "B". Locking knob "B" is operational only with door fully closed.

The central door locking system enables you to lock or unlock both doors simultaneously by operating one door lock.

The central door locking system functions only when both doors are fully closed. If one door is "centrally" locked before the other door is fully closed, the "centrally" locked door will unlock automatically.

Central door locking system



The armrests have a built-in storage compartment. To open, press knob in hand cutout and tilt armrest outward. To close, tilt compartment toward door panel.

To open doors from **inside**, pull recessed handle "C" above armrest.

To open doors from **outside**, pull the recessed door handle.

Doors

