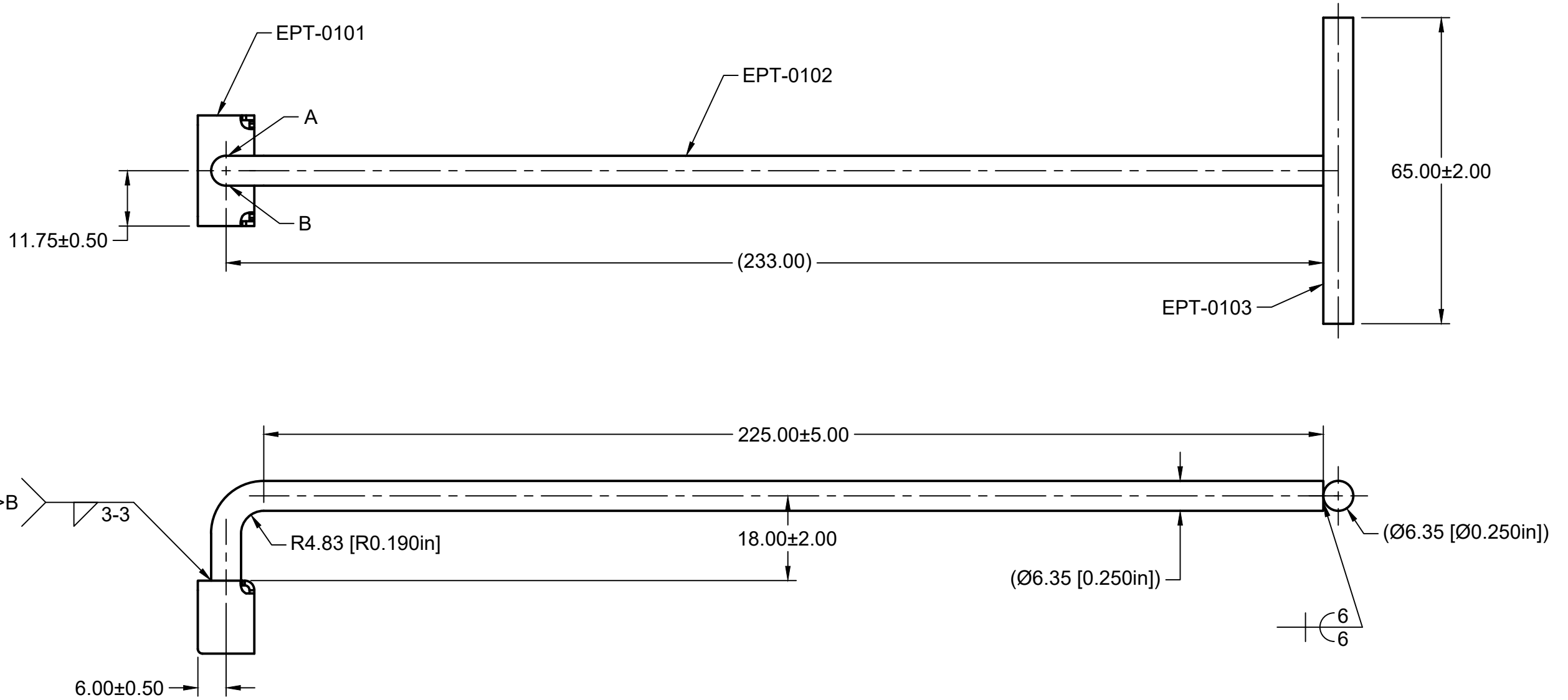
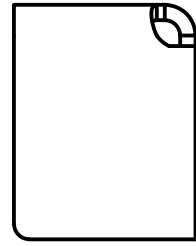


CONTACT:
 KEVIN BEREZ
 NLA SPECIALTIES
 770-891-7634
 kaberez@mindspring.com

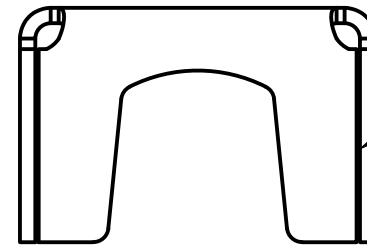
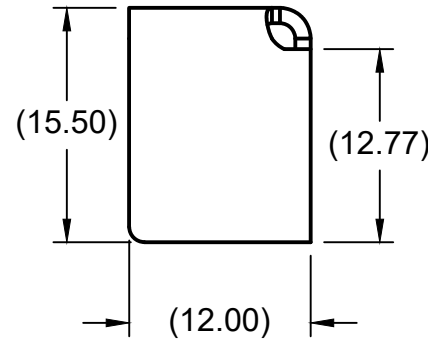
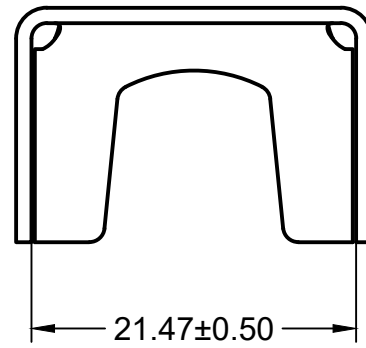
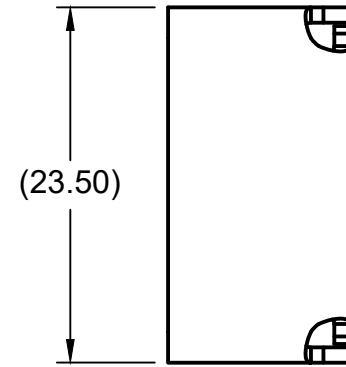
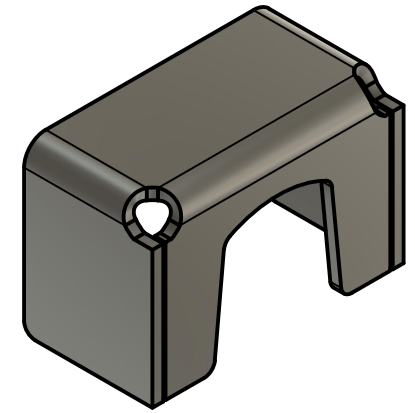


NOTES

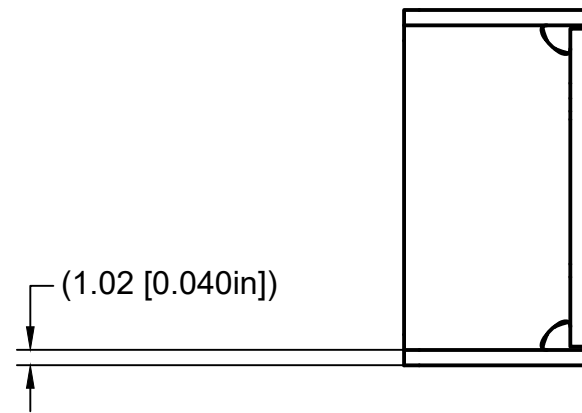
1. MATERIAL:
 EPT-0101: 18 GA MILD STEEL
 EPT-0102 & -0103: MILD STEEL Ø.250 BAR
2. POWDER COAT BLACK.
3. CHAMFER EPT-0102 ENDS AS NEEDED FOR WELDING PROCESS.
4. CHAMFER EPT-0103 ENDS TO BREAK SHARP EDGES. 1.00-2.00 MM.
5. EPT-0102 BEND RADIUS NOT CRITICAL.

		PROJECT		
		NLA Specialties		
		TITLE		
		ELECTRONICS PULLER TOOL EPT-0100		
		DRAFT -- NOT FOR PRODUCTION		
APPROVED		SIZE	CODE	DWG NO
CHECKED		B		
DRAWN	Jaime Berez	9/16/2021	SCALE 1:1	WEIGHT
				SHEET 1/2
				REV
				0.02

CONTACT:
 KEVIN BEREZ
 NLA SPECIALTIES
 770-891-7634
 kaberez@mindspring.com



3-2 BOTH FLANGES
 NO FILLER REQUIRED



NOTES

1. DISTANCE B/W FLANGES CRITICAL. VERIFY OR MEASURE.
2. ALL OTHER DIMENSIONS SET BY FLAT SHEET METAL PART.
3. SEE DRAWING EPT-0101 FOR FURTHER DETAIL.

		PROJECT		
		NLA Specialties		
		TITLE		
		ELECTRONICS PULLER TOOL EPT-0100: EPT-0101 REFERENCE DRAFT -- NOT FOR PRODUCTION		
APPROVED	SIZE	CODE	DWG NO	REV
CHECKED	B			0.02
DRAWN	Jaime Berez	9/16/2021	SCALE 1:4	WEIGHT
			SHEET 2/2	