

P 7-24-89

Technical Bulletin

Model
944 Turbo
944 S2, 928 S4

Group
4

Subject: Brake Calipers with Improved
Piston Seals

Part Identifier
4739/41

Number
8907

ATTENTION: This bulletin replaces Technical Bulletin Group 4, Number 8907, dated June 2, 1989.

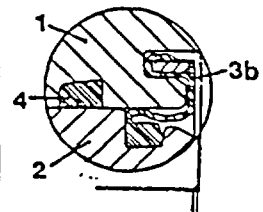
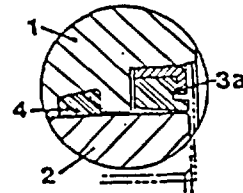
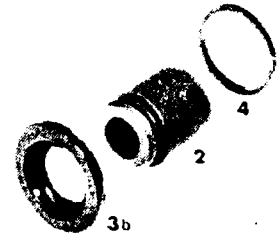
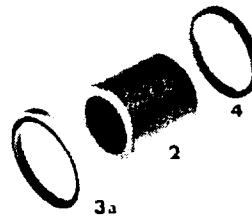
The front and rear brake calipers of the 944 S2, 944 Turbo, and 928 S4 for Model 89 received modifications in the area of the pistons and dust seals (now similar to the two piston calipers). Refer to the chart below for identification.

NOTICE CARB NORTH AMERICA INC.



Early Version with
Scraper Ring

New Type with
Dust Cap



- 1 — caliper housing
- 2 — piston
- 3a — scraper ring
- 3b — dust cap
- 4 — sealing ring (unchanged)

Replacement and repair procedures are different for each type of caliper and are detailed on the following pages.

015033



Shaded area denotes new information



SERVICE

Technical Bulletin

Model
944 Turbo
944 S2, 928 S4

Group
4

Subject: Brake Calipers with Improved Piston Seals

Part Identifier
4739/41

Number
8907

Repair Instructions

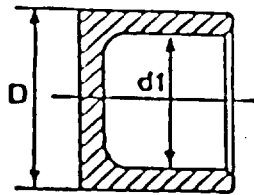
Caliper Replacement

New type calipers can be fitted to earlier cars. After stocks of early version calipers are used up, only the new type calipers (with dust caps and modified pistons) will be available. New version calipers (with dust caps) cannot be paired with early version calipers (with scraper rings). Measure the brake piston diameters to be certain the correct calipers are installed during repairs. Failure to install brake calipers with the correct piston sizes side to side will cause uneven braking. Use the following chart to determine piston diameter applications.

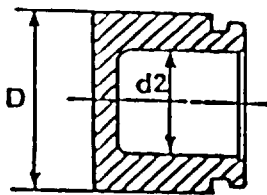
Caliper Repairs

Repair sets for early version and new type calipers are available. New type pistons and dust caps **cannot** be installed on early version calipers. When rebuilding brake calipers, use only sliding lubricant PN 000 043 117 00 on the pistons and sealing rings during assembly. Refer to Technical Bulletin Group 4, Number 8901, dated April 21, 1989 for further information.

Early Version Piston



New Version Piston



D(in mm)	D1(in mm)	D(in mm)	D2(in mm)
44	34	44	27.5
42	32	—	—
40	30	40	23.5
38	28	—	—
36	26	36	20.5
30	22	30	15.5
28	20	28	13.5



SERVICE

20-20-103A I-102 0102 0102

Technical Bulletin

Model
944 Turbo
944 S2, 928 S4

Group
4

Subject: - Brake Calipers with Improved
Piston Seal

Part Identifier
4739/41

Number
8907

Brake Caliper and Repair Set Applications

944 Series

Front Axle

Model Type: Piston Dia. in mm	Brake Caliper with Scraper Ring	Repair Set (Piston Seal Ring, Scraper Ring)	Brake Caliper with Dust Cap	Repair Set (Piston seal ring, Dust Cap)
944 Turbo ('86) 36/38	* Left 951 351 421 00 Right 951 351 422 00	951 351 919 01 For 36mm Piston Dia. 951 351 919 00 For 38mm Piston Dia.	—	—
944 Turbo ('87/'88) 944 S2 ('89)**** 36/40	** Left 951 351 421 01 Right 951 351 422 01	951 351 919 01 For 36mm Piston Dia. 951 351 919 02 For 40mm Piston Dia.	Left 951 351 421 02 Right 951 351 422 02	951 351 919 10 For 36mm Piston Dia. 951 351 919 11 For 40mm Piston Dia.
944 Turbo S ('88) 36/44	** Left 951 351 093 00 Right 951 351 094 00	951 351 919 01 For 36mm Piston Dia. 928 351 919 01 For 44mm Piston Dia.	Left 928 351 421 02 Right 928 351 422 02	951 351 919 10 For 36mm Piston Dia. 928 351 919 10 For 44mm Piston Dia.
944 Turbo ('89) *** 36/44	** Left 951 351 093 00 Right 951 351 094 00	951 351 919 01 For 36mm Piston Dia. 928 351 919 01 For 44mm Piston Dia.	Left 928 351 421 02 Right 928 351 422 02	951 351 919 10 For 36mm Piston Dia. 928 351 919 10 For 44mm Piston Dia.

Rear Axle

944 Turbo all**** 944 S2 ('89)**** 28/30	** Left 951 352 421 00 Right 951 352 422 00	951 352 919 01 For 28mm Piston Dia. 951 352 919 00 For 30mm Piston Dia.	Left 951 352 421 01 Right 951 352 422 01	951 352 919 10 For 28mm Piston Dia. 951 352 919 11 For 30mm Piston Dia.
--	---	--	---	--

- * After stocks are used up, calipers with 36mm/38mm piston diameter will no longer be available. When repairing, use calipers with 36mm/40mm piston diameter and install in pairs.
- ** When used up, brake calipers with scraper ring will no longer be available. When repairing, use calipers with dust caps and install only in pairs.
- *** In production, brake calipers with dust caps were installed on the rear axle from VIN: 95 KN 150216. Visual inspection of front calipers is necessary for caliper type identification.
- **** Front and rear calipers require visual inspection to determine caliper type identification.

Shaded area denotes new information



SERVICE

02 - AC - 2EA 1-202 5220 5105000

Technical Bulletin

Model
944 Turbo
944 S2, 928 S4

Group
4

Subject: Brake Calipers with Improved
Piston Seals

Part Identifier
4739/41

Number
8907

Brake Caliper and Repair Set Applications

928 Series

Front Axle

Model Type: Piston Dia. in mm	Brake Caliper with Scraper Ring	Repair Set (Piston Seal Ring, Scraper Ring)	Brake Caliper with Dust Cap	Repair Set (Piston Seal Ring, Dust Cap)
928 S ('86) 36/42	* Left 928 351 421 00 Right 928 351 422 00	951 351 919 01 36mm Piston Dia. 928 351 919 00 42mm Piston Dia.	—	—
928 S4 ('87/'88) 928 S4 ('89) ** 36/44	*** Left 928 351 421 01 Right 928 351 422 01	951 351 919 01 36mm Piston Dia. 928 351 919 01 44mm Piston Dia.	Left 928 351 421 02 Right 928 351 422 02	951 351 919 10 36mm Piston Dia. 928 351 919 10 44mm Piston Dia.

Rear Axle

928 S ('86) 928 S4 ('87/'88) 928 S4 ('89) ** 28/30	*** Left 928 352 421 00 Right 928 352 422 00	951 352 919 01 28mm Piston Dia. 951 352 919 00 30mm Piston Dia.	Left 928 352 421 01 Right 928 352 422 01	951 352 919 10 28mm Piston Dia. 951 352 919 11 30mm Piston Dia.
---	--	--	---	--

- * When used up, brake calipers with piston diameter 36/42mm will no longer be available. When repairing, use calipers with piston diameter 36/44mm and install in pairs.
- ** In production, brake calipers with dust caps were installed on front and rear axle from VIN: 92 KS 860282.
- *** When used up, will no longer be available. When repairing, use brake calipers with dust caps and install only in pairs.

Important Notice

PCNA Technical Bulletins are intended for use by professional technicians, not a "Do-it-yourselfer." They are written to inform these technicians of conditions that may occur on some vehicles, or to provide information that could assist in the proper service of a vehicle. Special tools may be required to perform certain operations identified in these bulletins. Use of tools and procedures other than those recommended in these bulletins may be detrimental to the safe operation of your vehicle. Properly trained technicians have the equipment, tools, safety instructions and know-how to do a job properly and safely. If a condition is described, do not assume that the bulletin applies to your vehicle, or that your vehicle will have that condition. See your Porsche Dealer for information on whether your vehicle may benefit from the information. Part numbers listed in these bulletins are for reference only. Always check with your authorized Porsche dealer to verify correct part numbers.

© 1989 Porsche Cars North America, Inc



SERVICE

Page 4 of 4
June 30, 1989

02-20-253A I-1102 5125 11000000