



KENT-MOORE

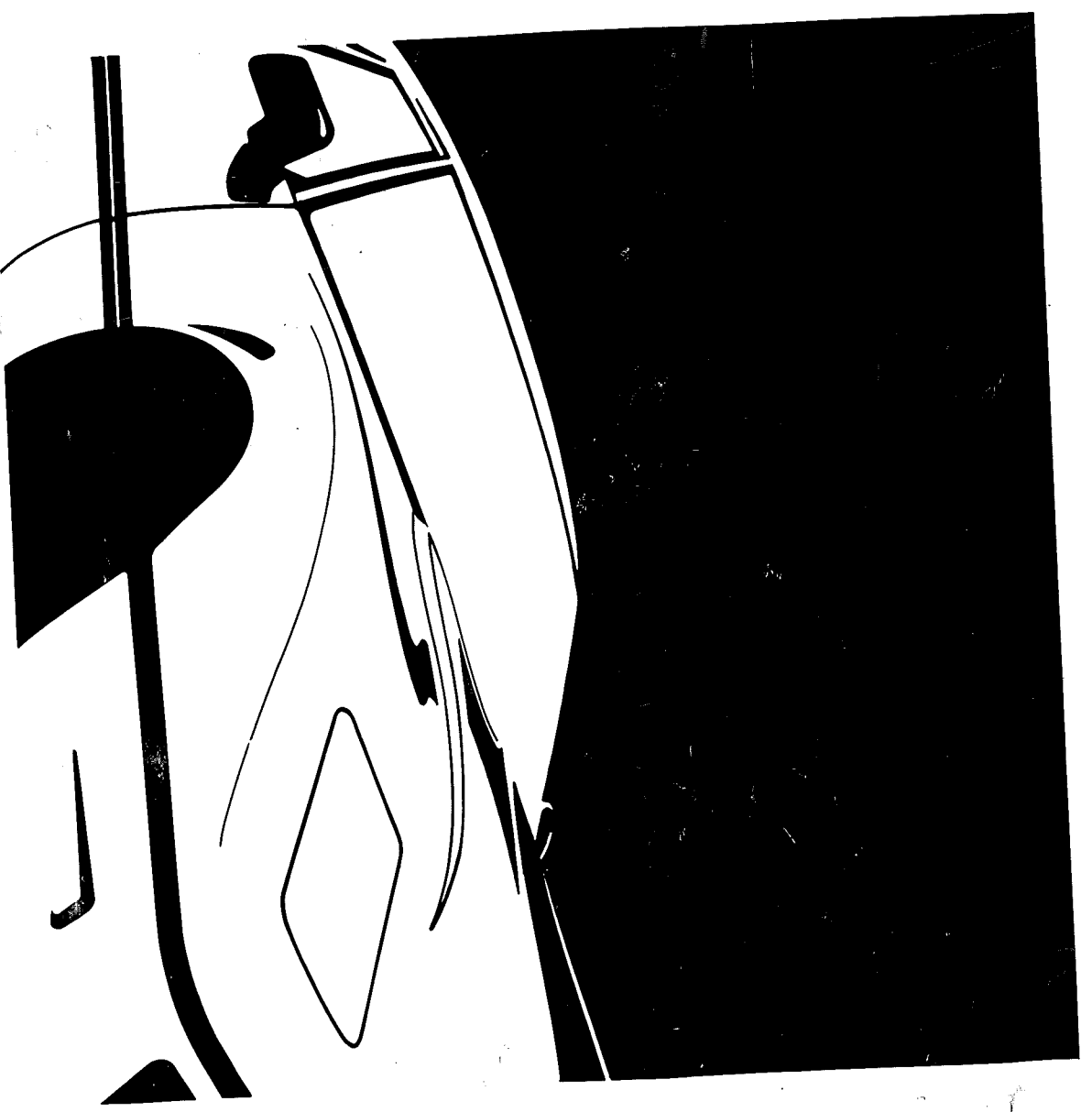
Kent-Moore Tool Group
Sealed Power Corporation
29784 Little Mack
Roseville, MI 48066-9984
Telephone: 1-800-345-2233
In Michigan: 313-774-9500
Telex: 23-5377



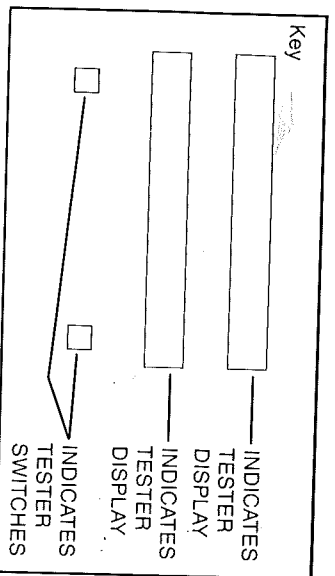
KENT-MOORE

Tool Group

**J 35890
ABS TESTER
INSTRUCTIONS**



LISTED BELOW IS AN
EXPLANATION OF THE 3B,
BRAKE LIGHT SWITCH TEST
PROCEDURE.



PRESS BRK - - - - HOLD
PRESS BRAKE PEDAL FIRMLY
AND HOLD PRESSURE...

THEN

YES PRESSED?

NO

TESTER WILL GIVE
INSTRUCTIONS/INFORMATION.

"THEN" INDICATES THE TESTER WILL
ALTERNATE THE TWO DISPLAYS.

TESTER "ASKS A QUESTION"
WHICH MUST BE ANSWERED BY
PRESSING THE SWITCH UNDER
THE DESIRED ANSWER.
NOTE: IN THIS CASE,

PRESS YES - TEST
CONTINUES.
PRESS NO - TESTER
DISPLAYS:

PRESS BRK - - - - HOLD

TESTER WILL PROCESS
INFORMATION.

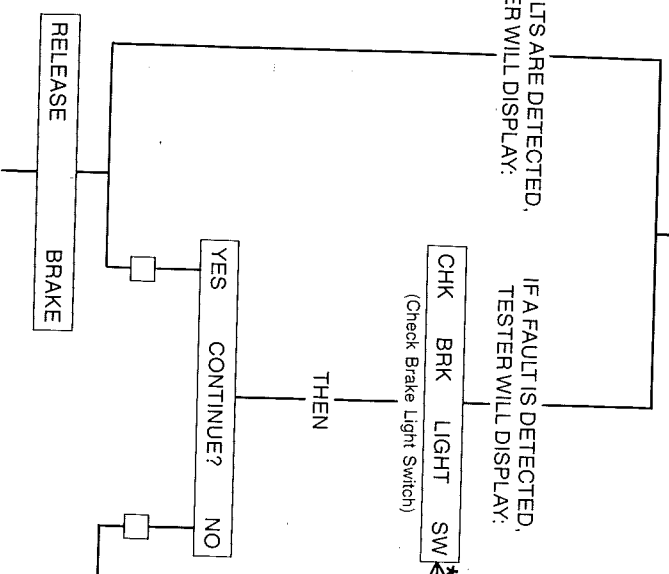
IF NO FAULTS ARE DETECTED,
TESTER WILL DISPLAY:

IF A FAULT IS DETECTED,
TESTER WILL DISPLAY:

CHK BRK LIGHT SW
(Check Brake Light Switch)

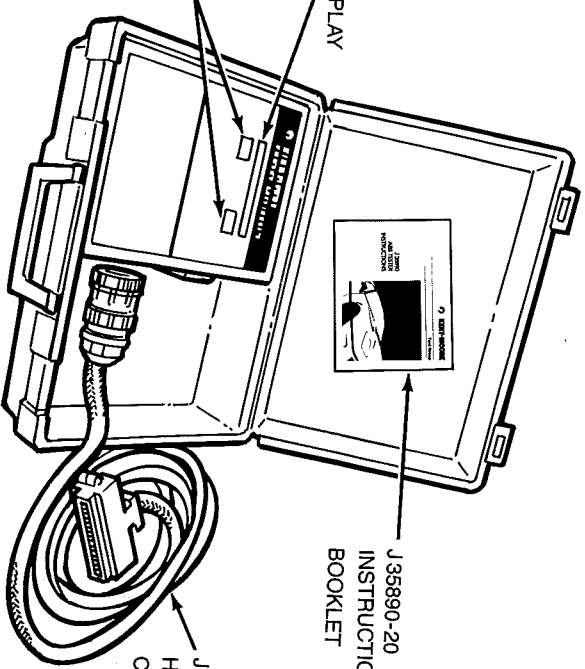
* INDICATES A FAULT MESSAGE.
REFER TO APPLICABLE SHOP
MANUAL FOR ADDITIONAL
DIAGNOSTIC INFORMATION.

TESTER WILL GIVE NEW
INSTRUCTIONS/INFORMATION
AND CONTINUE.

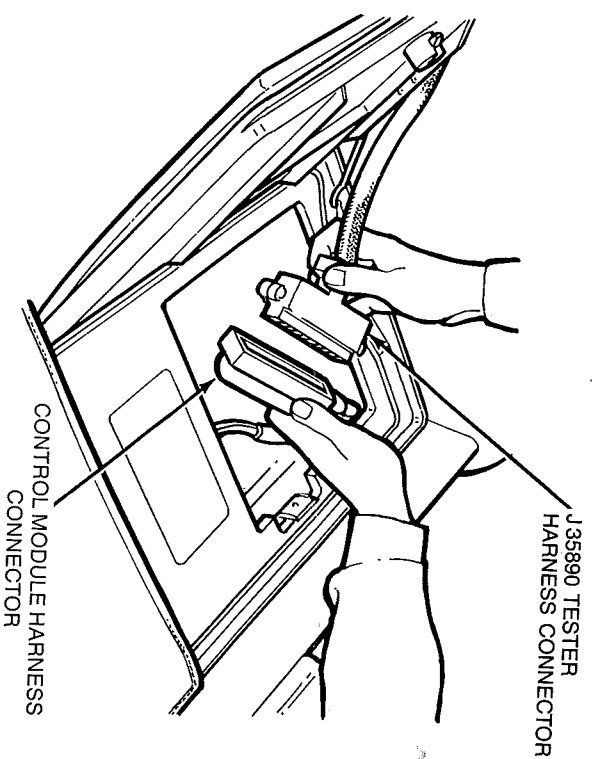


TESTER DISPLAY

TESTER SWITCHES



TYPICAL TESTER HARNESS/VEHICLE HARNESS CONNECTION



1986 CORVETTE APPLICATION SHOWN

YES LOCKED?

HAS THE WHEEL STOPPED SPINNING
AND LOCKED IN PLACE?

PRESS: - OR -

NO

CHECK HYDRAULICS*

THEN

YES CONTINUE? NO

- OR -

RELEASE BRAKE PRESS:

THEN

SOLENOID OK

THEN

STAT TEST DYNAM

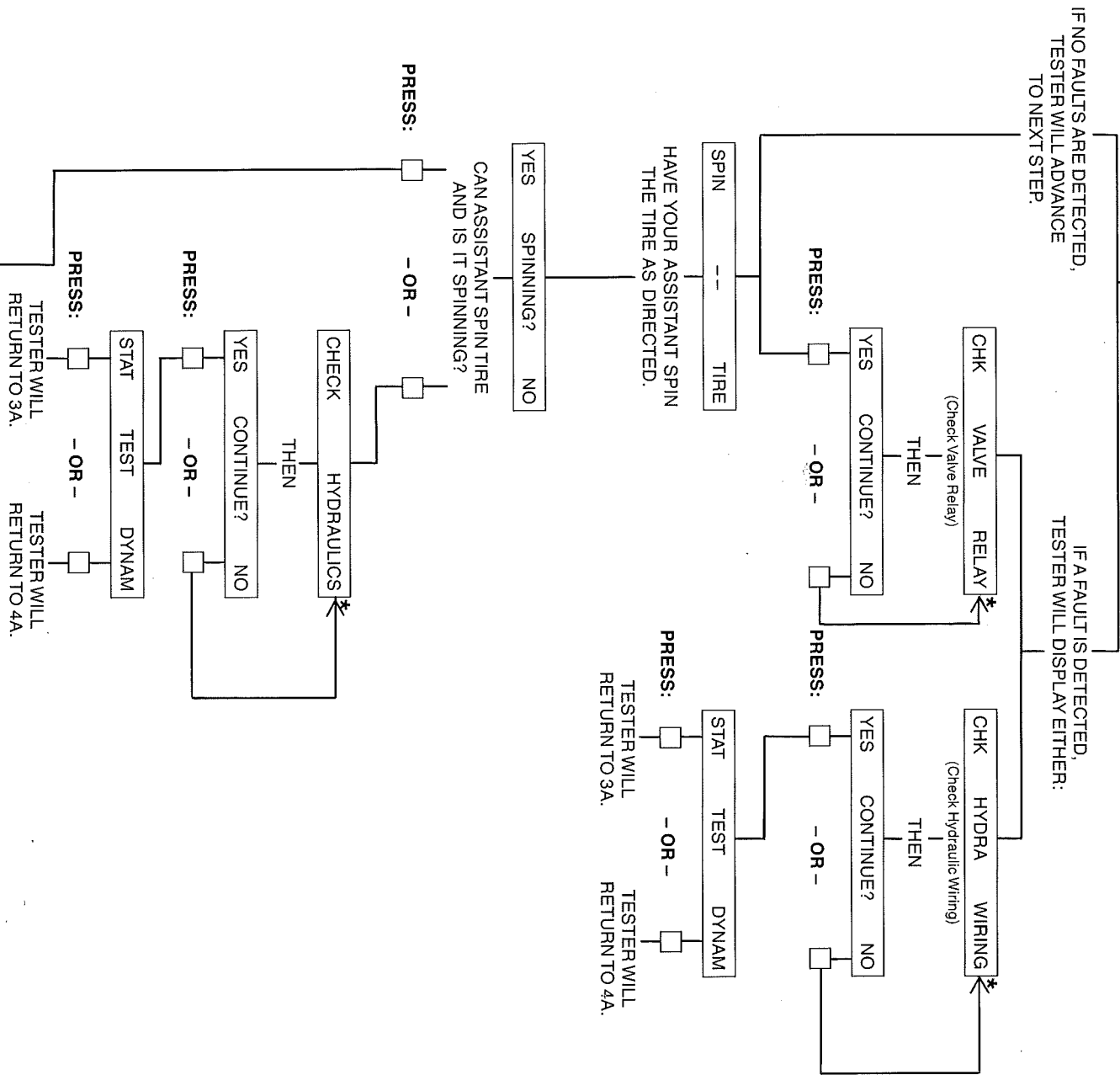
PRESS: - OR -

TESTER WILL RETURN TO 3A.

TESTER WILL RETURN TO 4A.

IMPORTANT - CONTINUE TO RETURN TO 4A
UNTIL ALL FOUR WHEELS
HAVE BEEN TESTED.

PUSH EITHER SWITCH
TO START THIS TEST
(CONTINUE)
APPLYING FIRM PRESSURE
TO BRAKE PEDAL.)



1. CONNECTION/POWER-UP

1. LOCATE ABS CONTROL MODULE.
2. DISCONNECT CONTROL MODULE HARNESS CONNECTOR FROM CONTROL MODULE.
3. CONNECT J 35890 TESTER HARNESS TO CONTROL MODULE HARNESS CONNECTOR.
4. TURN IGNITION KEY TO "RUN" POSITION. (POWER FOR J 35890 IS SUPPLIED THROUGH CONTROL MODULE HARNESS CONNECTOR.)

TESTER WILL RAPIDLY DISPLAY SEVERAL MESSAGES DURING AN INITIAL SEGMENT CHECK.

BOSCH ABS 2 TEST

THEN

2. SYSTEM VOLTAGE CHECKS

TESTER AUTOMATICALLY PERFORMS MULTIPLE SYSTEM VOLTAGE TESTS.

IF NO FAULTS ARE DETECTED,
TESTER WILL ADVANCE
TO NEXT TEST.

IF FAULTS ARE DETECTED, TESTER WILL DISPLAY THE CORRESPONDING FAULT MESSAGE(S) AS SHOWN BELOW:

LF VALVE OPEN *	CHK BRK LIGHT SW *
(Left Front Valve Open)	(Check Brake Light Switch)
RF VALVE OPEN *	CHK IGNITION SW *
(Right Front Valve Open)	(Check Ignition Switch)
REAR VALVE OPEN *	CHK LF SPD SENS *
	(Check Left Front Speed Sensor)
CHK ABS DIODE *	CHK RF SPD SENS *
(Check ABS Diode)	(Check Right Front Speed Sensor)
CHK CONT MOD GND *	CHK LR SPD SENS *
(Check Control Module Ground)	(Check Left Rear Speed Sensor)
CHK SYSTEM GND *	CHK RR SPD SENS *
(Check System Ground)	(Check Right Rear Speed Sensor)
LAT ACCEL SW OPN *	
(Lateral Acceleration Switch Open)	

TESTER DISPLAY WILL ALTERNATE ABOVE MESSAGES WITH

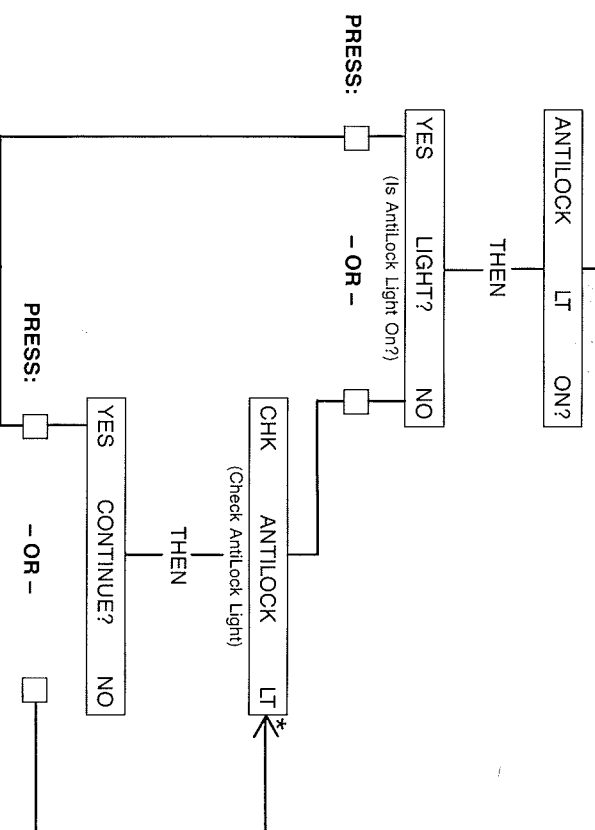
YES CONTINUE? YES → **STAT TEST** → DYNAM → **PRESS:** → **TESTER WILL DISPLAY SAME FAULT MESSAGE.**

NO → **- OR -** → **IF NO ADDITIONAL FAULTS ARE DETECTED, TESTER WILL ADVANCE TO NEXT TEST.**

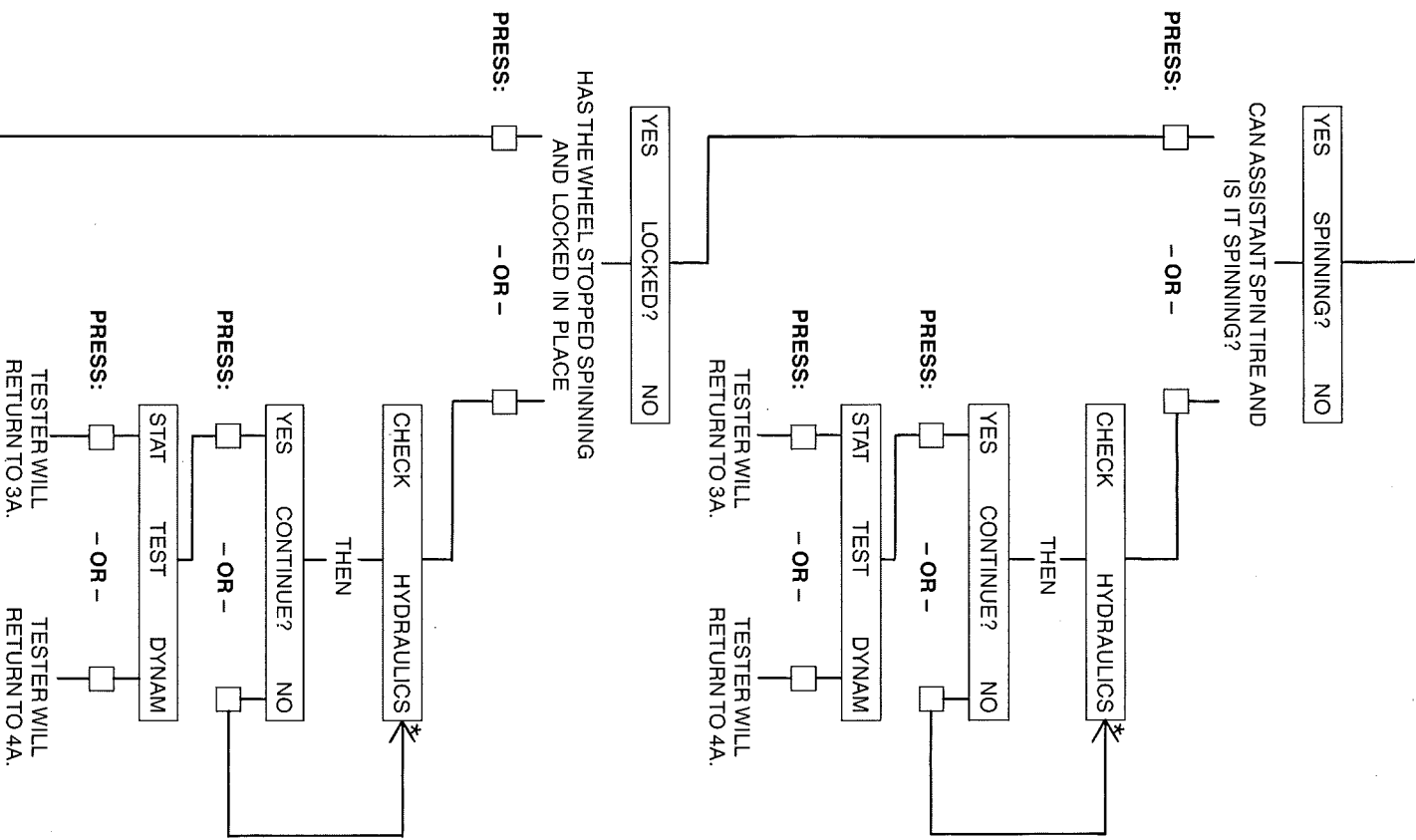
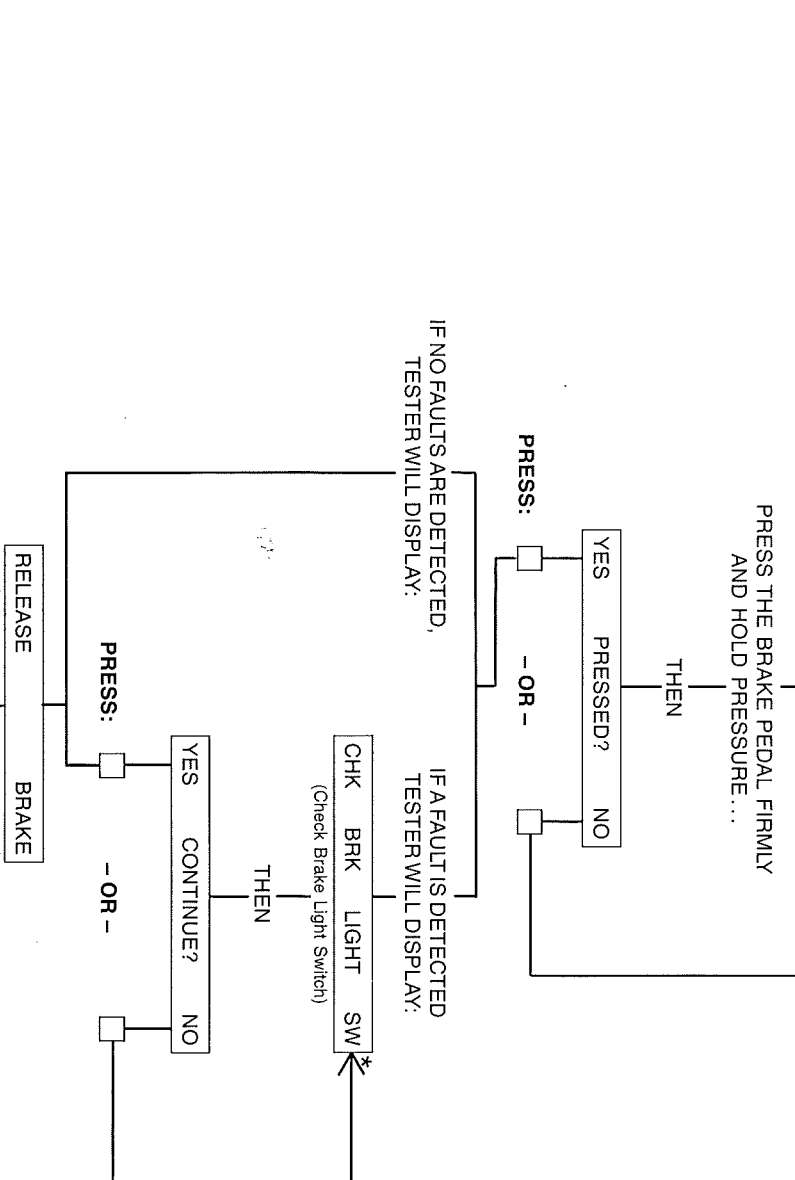
IF ADDITIONAL FAULTS ARE DETECTED, TESTER WILL DISPLAY NEXT FAULT MESSAGE.

* AFTER DISPLAY INDICATES A FAULT MESSAGE, REFER TO APPLICABLE SHOP MANUAL FOR ADDITIONAL DIAGNOSTIC INFORMATION.

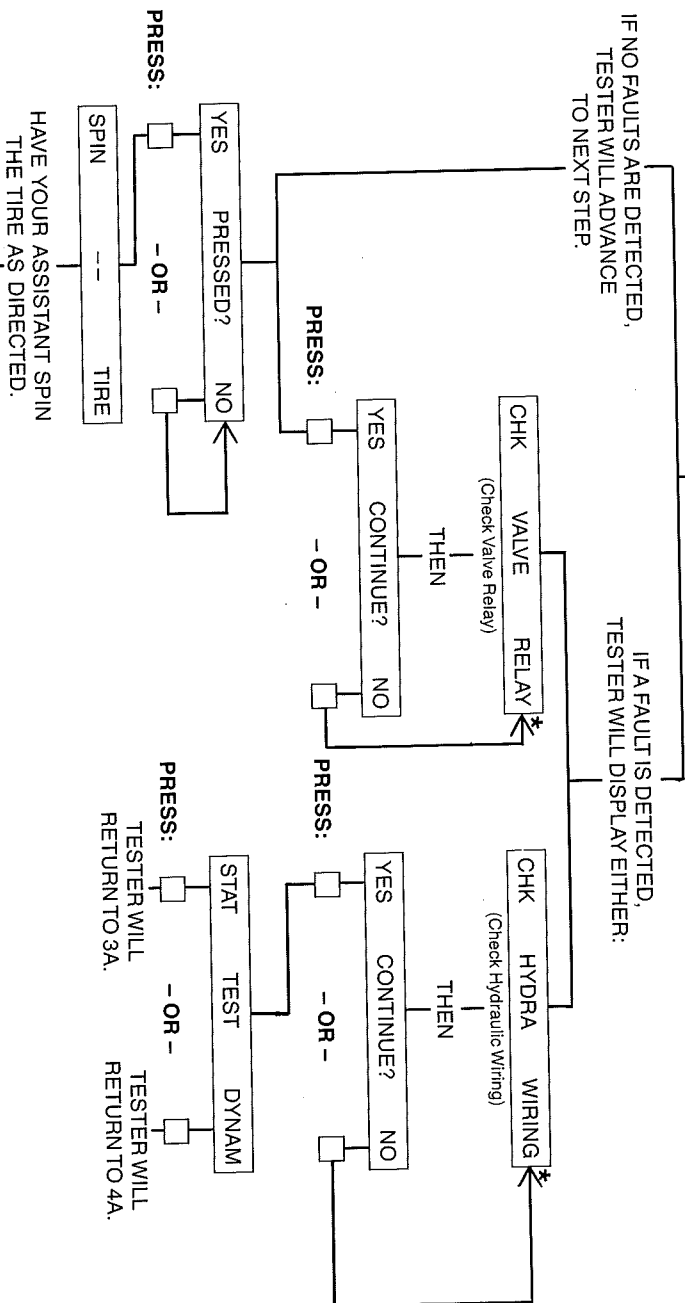
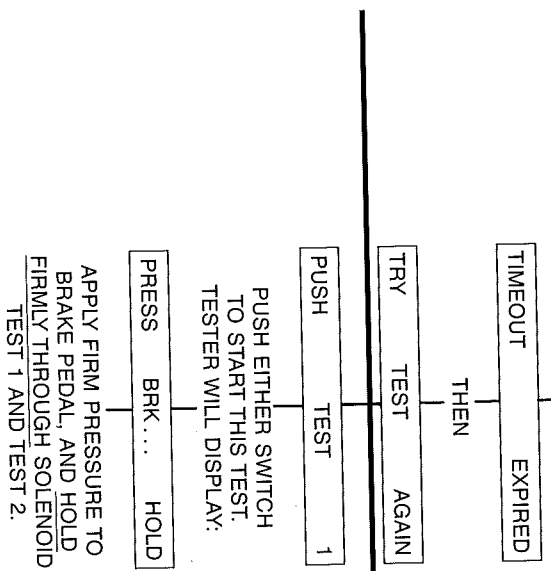
3A. ANTI-LOCK LIGHT TEST



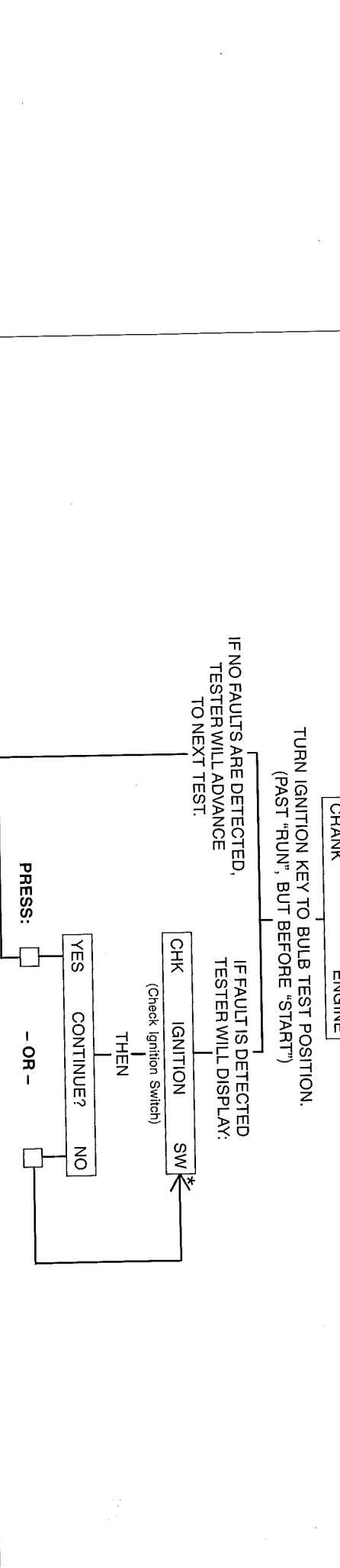
3B. BRAKE LIGHT SWITCH TEST



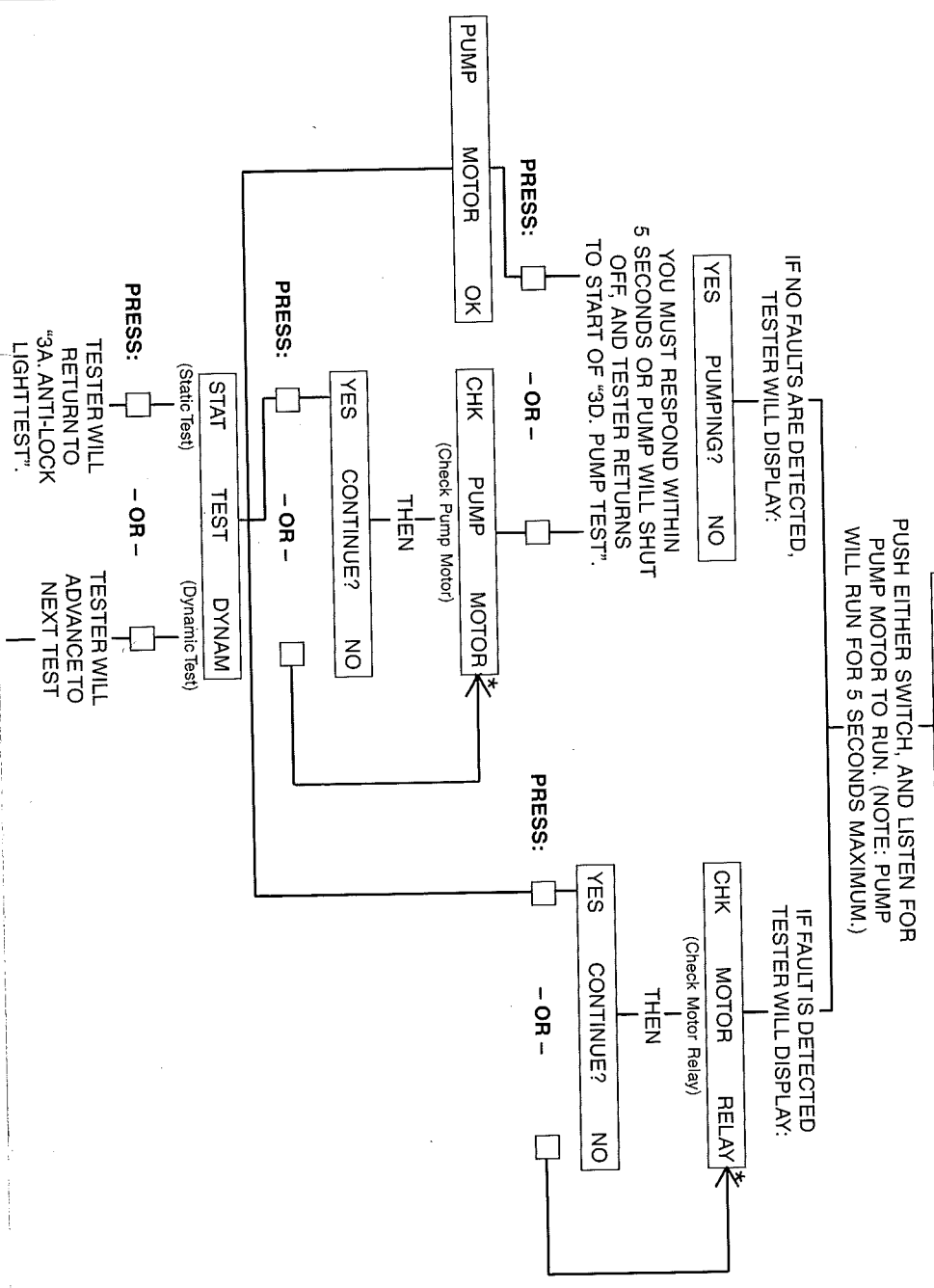
NOTE: EACH OF THE TWO SOLENOID TESTS FOR EACH WHEEL CAN BE CONDUCTED FOR A MAXIMUM OF 15 SECONDS. IF TIME LIMIT IS EXCEEDED, TESTER WILL DISPLAY:



3C. IGNITION SWITCH TEST



3D. PUMP TEST

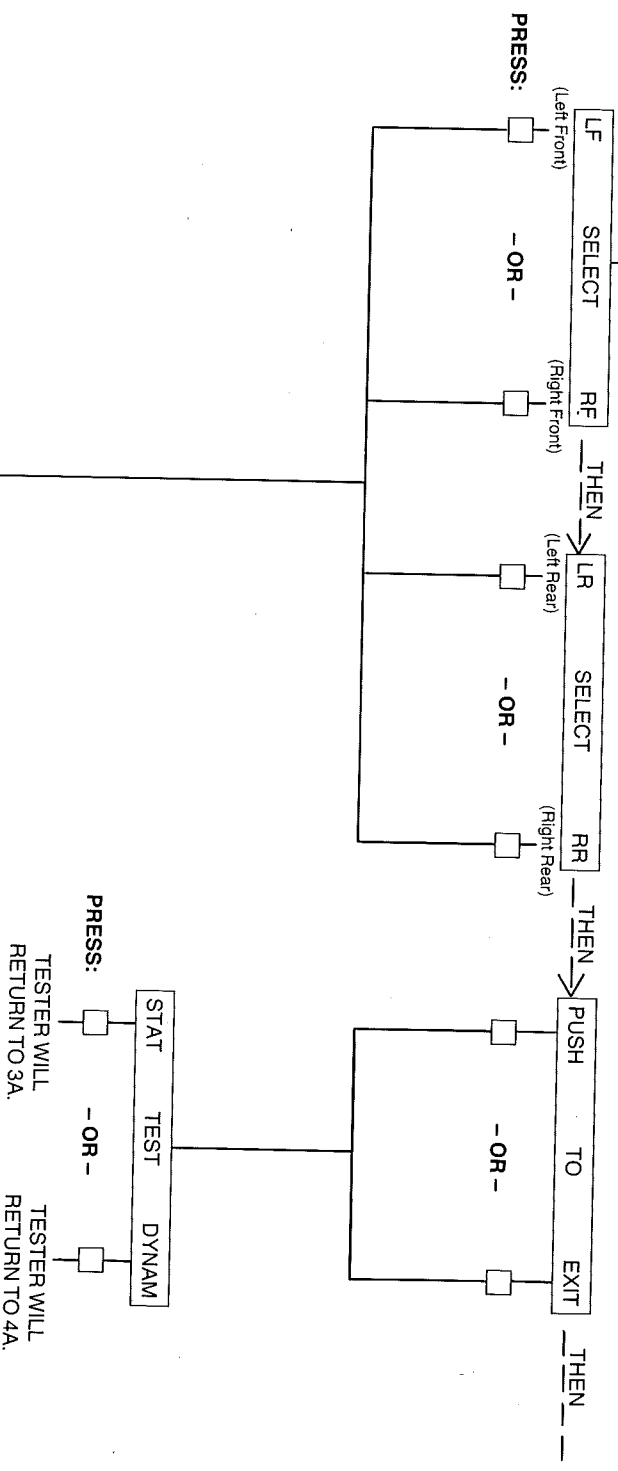


4A. WHEEL SELECTION
OR EXIT

THESE THREE MESSAGES WILL ALTERNATE ON THE DISPLAY SCREEN AT 3 1/2 SECOND INTERVALS. NOW, SELECT ONE OF THE FOUR WHEELS TO BEGIN THE DYNAMIC TEST SEQUENCE.

OR

PRESS EITHER SWITCH UNDER "PUSH TO EXIT" DISPLAY, TO RETURN TO "STAT TEST DYNAM" SELECTION.



NOTE: FOR EACH OF THE WHEEL TESTS, IT IS NECESSARY TO RAISE THE WHEEL(S) BEING TESTED OFF THE FLOOR. (WHEN TESTING REAR WHEELS, BOTH WHEELS MUST BE RAISED OFF THE FLOOR.) AN ASSISTANT WILL BE REQUIRED TO SPIN THE WHEELS.

IMPORTANT: WHEN ENTERING THE DYNAMIC TEST SEQUENCE, YOU WILL SELECT ONE OF FOUR WHEELS TO BEGIN. WHEN YOU HAVE FINISHED WITH THAT WHEEL TEST, YOU SHOULD RETURN TO 4A "WHEEL SELECTION" TO SELECT ANOTHER WHEEL, AND REPEAT THESE TEST PROCEDURES FOR ALL FOUR WHEELS.

4B. WHEEL SENSOR TEST

