

Wiring Diagram Type 928 S Model 85

PAGE 1	LAMPS
PAGE 2	BODY
PAGE 3	INSTRUMENT CLUSTER + INDICATORS
PAGE 4	VENTILATION AND HEATING
PAGE 5	RADIO
PAGE 6	ABS, ALARM SYSTEM, TRAILER COUPLING
PAGE 7	ENGINE - DIGITAL ENGINE ELECTRONICS
PAGE 8	CENTRAL ELECTRICAL SYSTEM

Wiring Diagram Type 928 S Model 85

The wiring diagram comprises eight individual wiring diagrams and one legend. They are subdivided into coordinate fields.

Each individual wiring diagram comprises a part of the central electrical system within a dash-dot frame.

This part of the central electrical system shows all the lines and relays required for individual wiring diagram.

The ground-connecting points are designated with "MP" and their location is shown in a vehicle diagram.

The 10-pole plugs on central electrical system are new. They are clipped together from 3 parts.

Part 1, with the cast-on fastening pin, is the "initial element".

Part 2 is the "module element".

Both parts are identified by the digits 1 . . . 5.

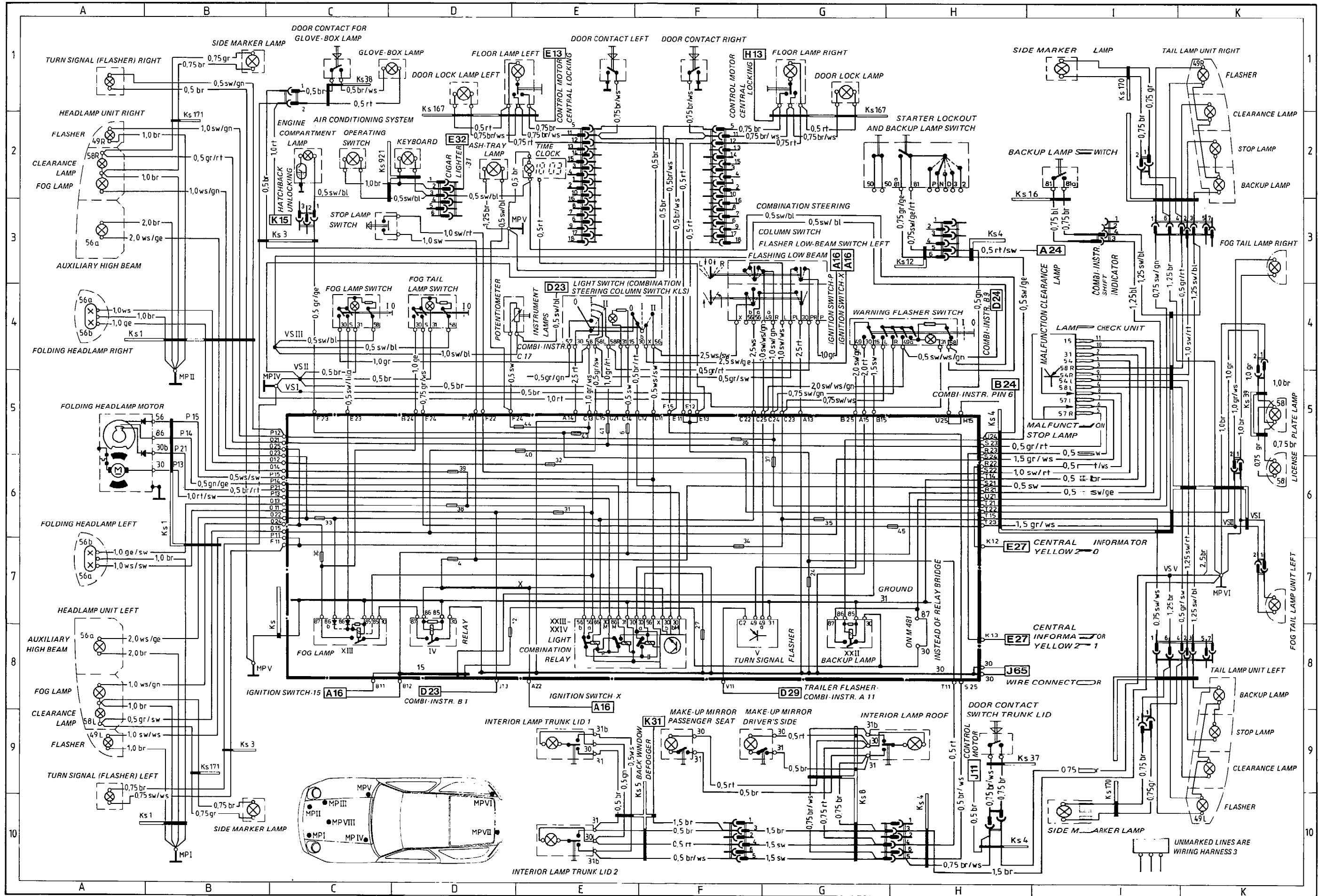
Part 3 is a "coding element".

The designations of the plug connections in wiring diagram for central electrical system refer e. g. from A 11 . . . 15 to the "initial element", from A 21 . . . 26 to module element.

Wiring Diagram Type 928 S
Model 85 page 1

LAMPS

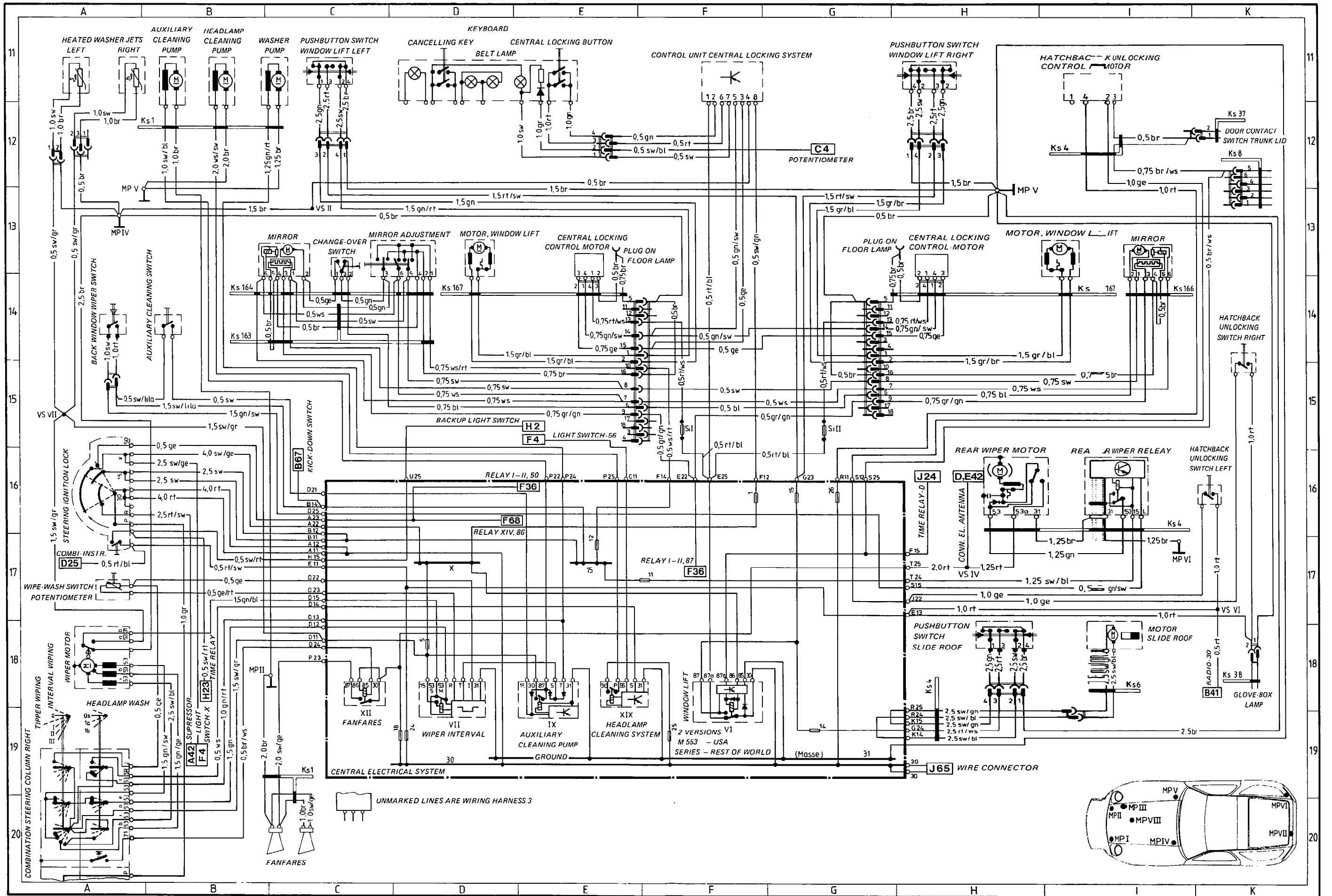
LAMPS



Wiring Diagram Type 928 S
Model 85 page 2

BODY

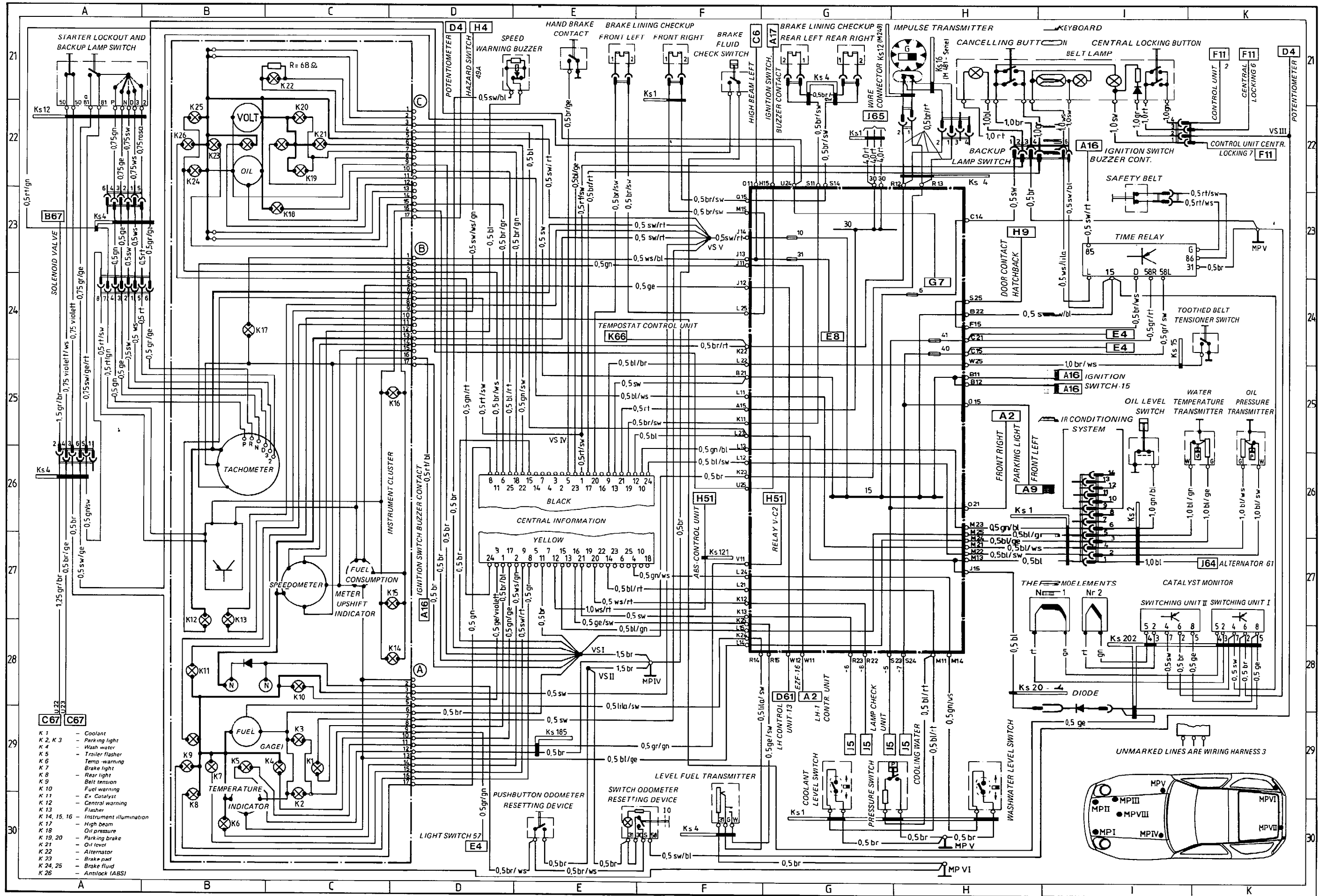
BODY



Wiring Diagram Type 928 S Model 85 page 3

INSTRUMENT CLUSTER + INDICATORS

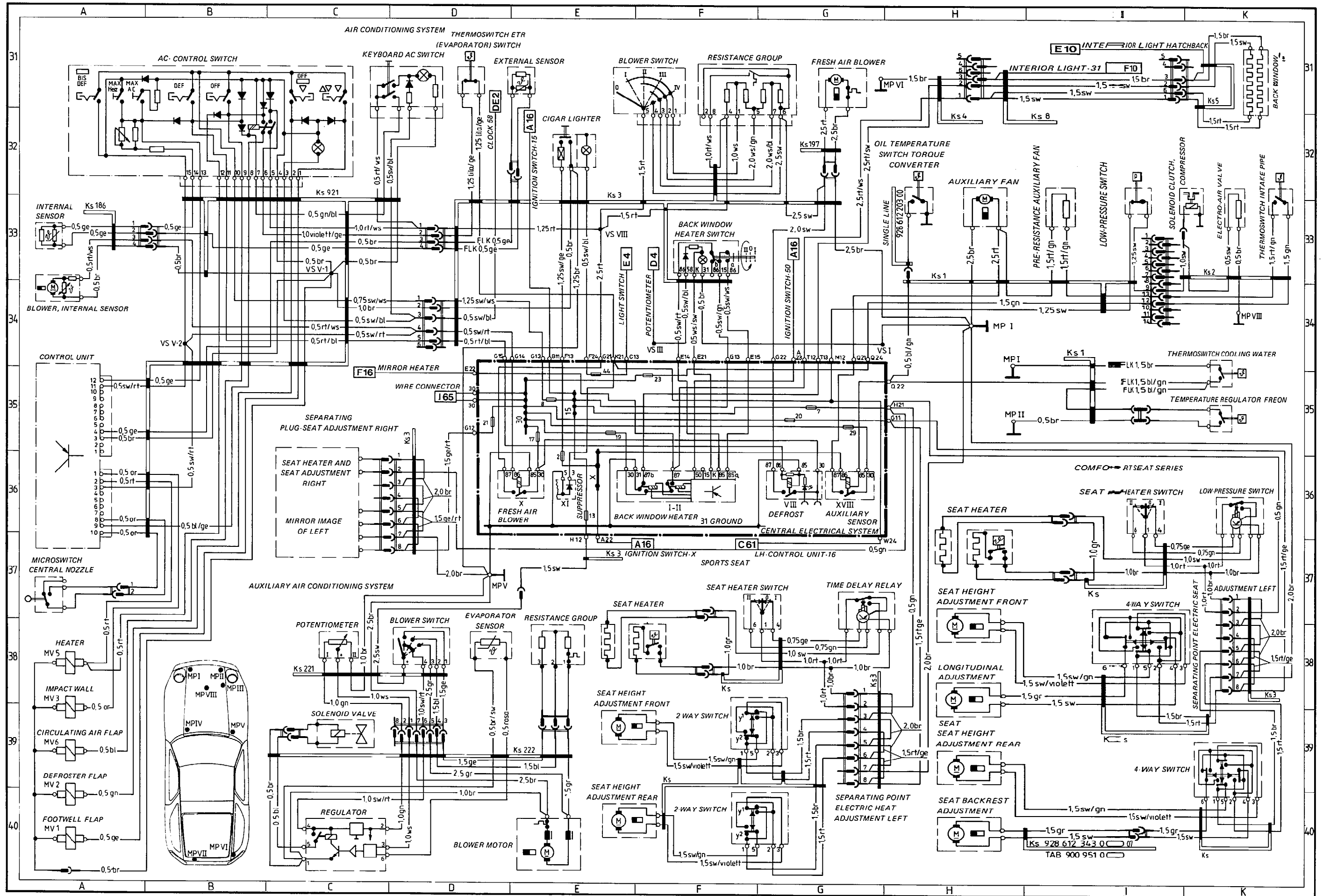
INSTRUMENT CLUSTER + INDICATORS



Wiring Diagram Type 928 S
Model 85 page 4

VENTILATION AND HEATING

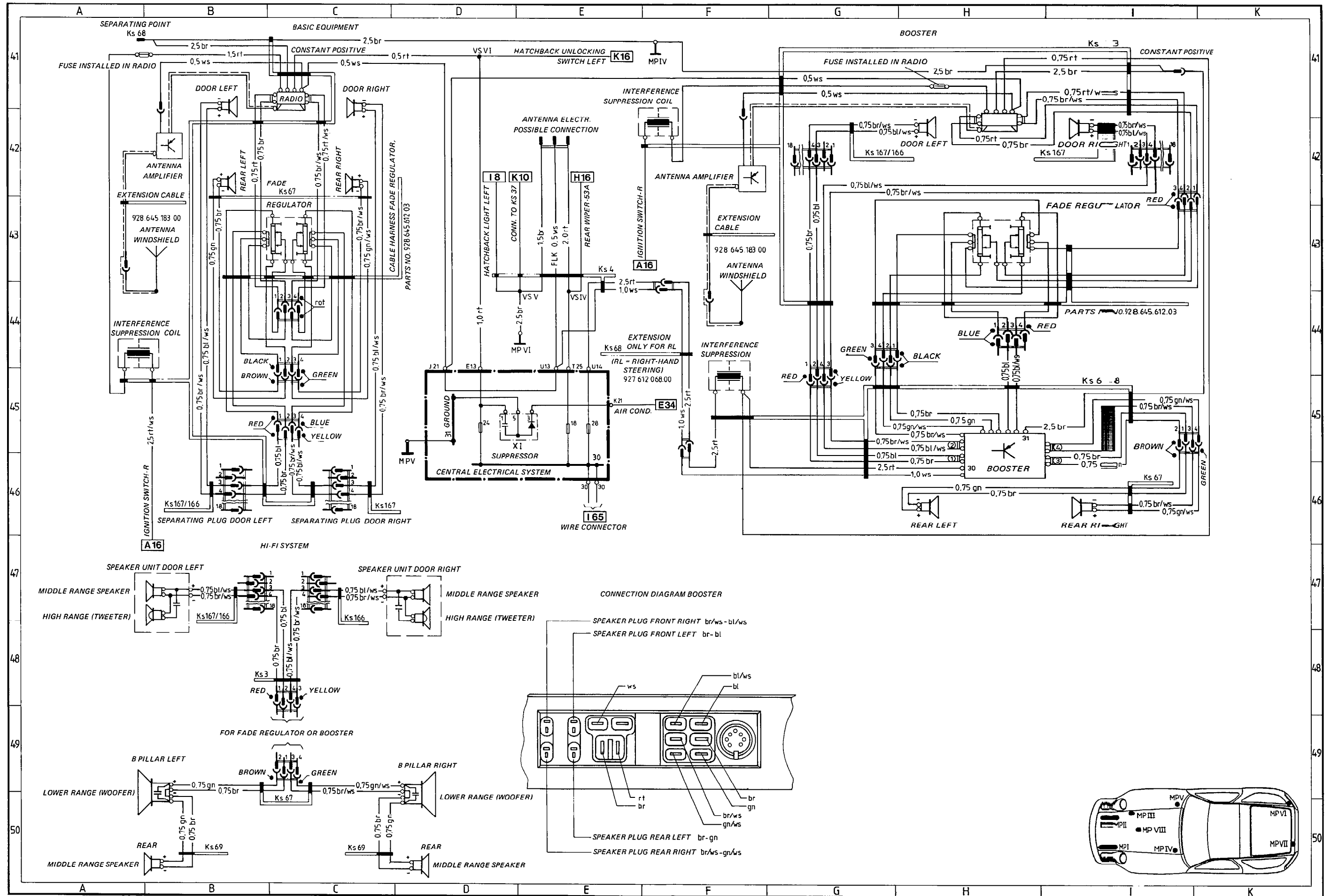
VENTILATION AND HEATING



Wiring Diagram Type 928 S
Model 85 page 5

RADIO

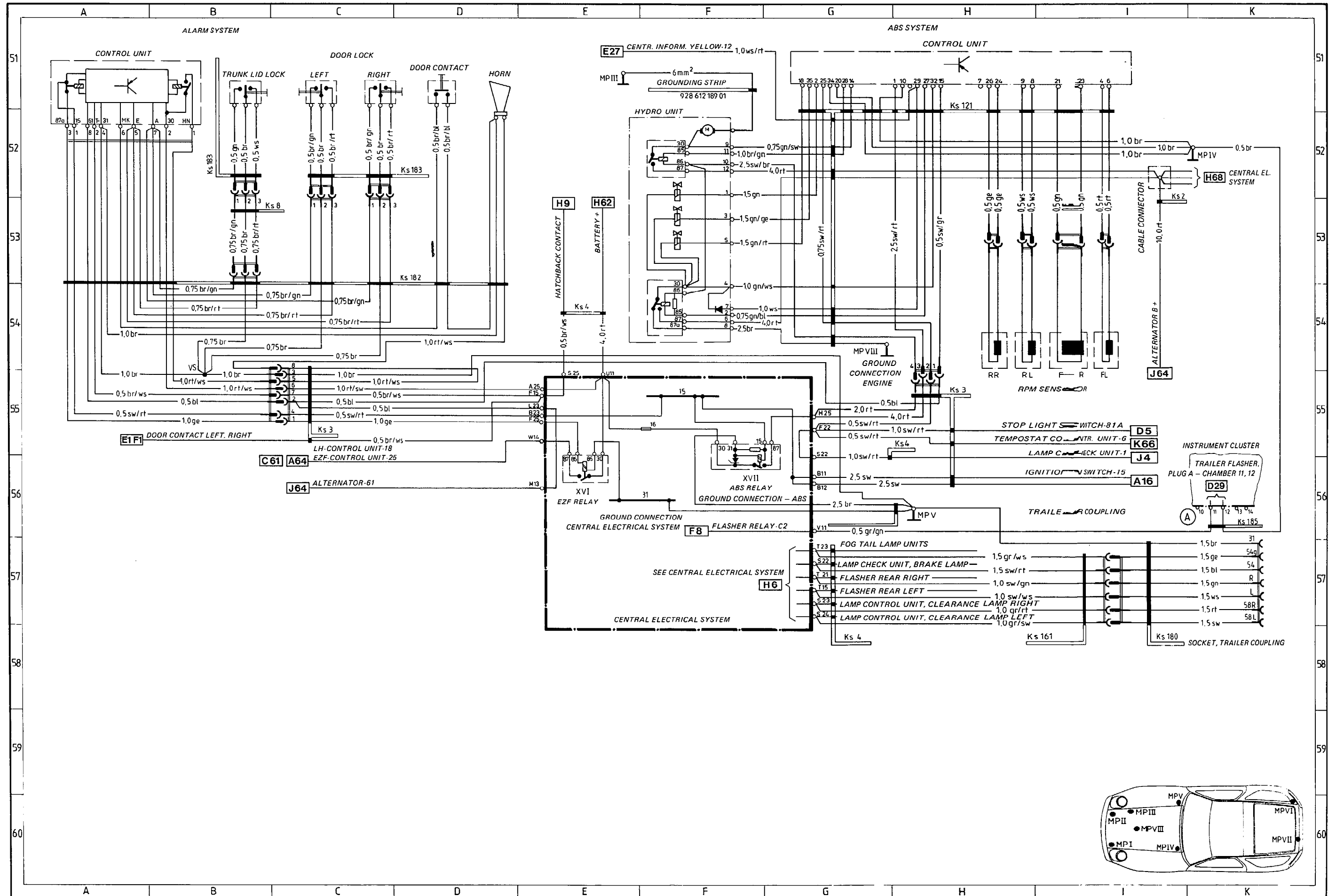
RADIO



Wiring Diagram Type 928 S
Model 85 page 6

ABS, ALARM SYSTEM, TRAILER COUPLING

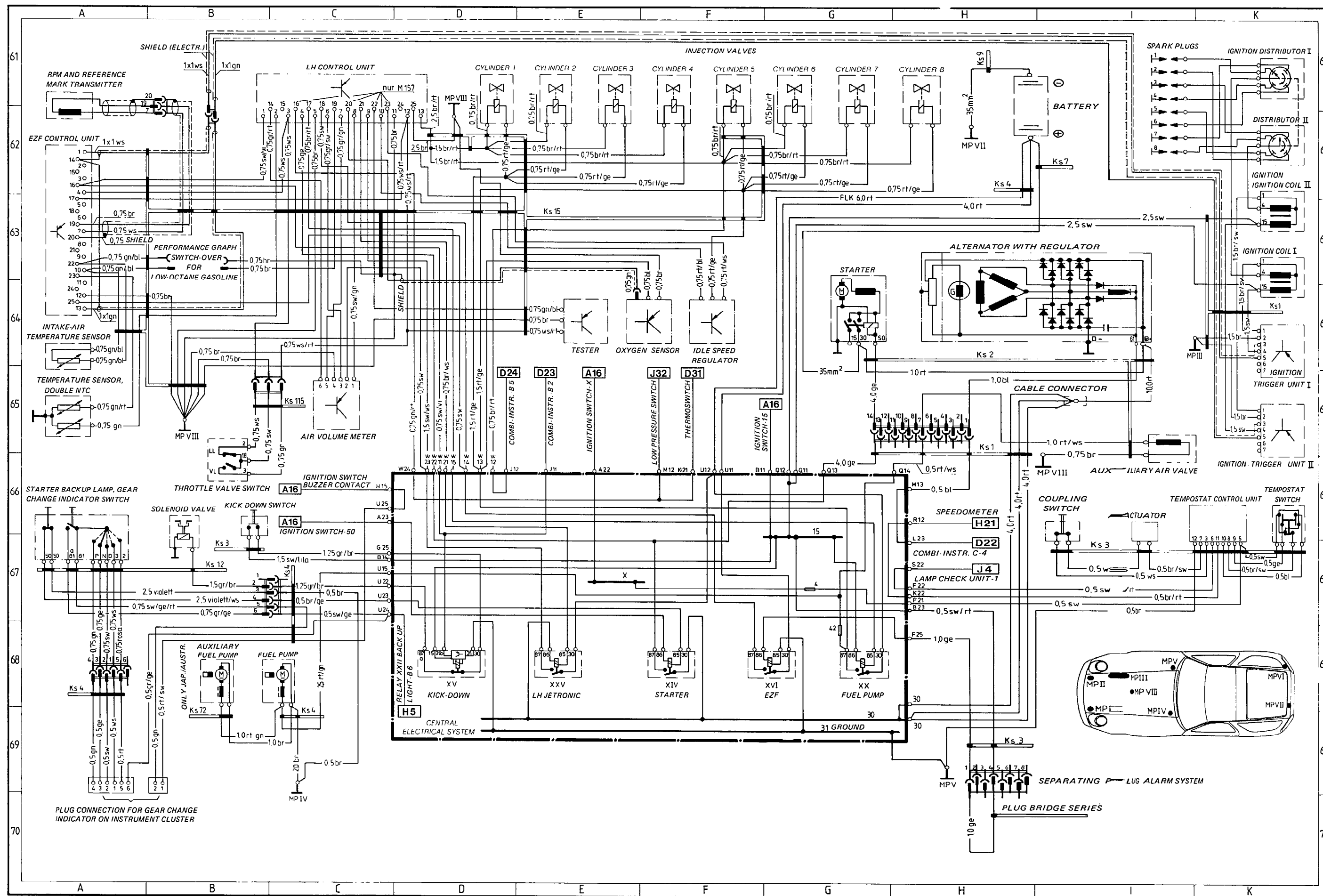
ABS, ALARM SYSTEM, TRAILER COUPLING



Wiring Diagram Type 928 S Model 85 page 7

ENGINE - DIGITAL ENGINE ELECTRONICS

ENGINE - DIGITAL ENGINE ELECTRONICS



Wiring Diagram Type 928 S Model 85 page 8

CENTRAL ELECTRICAL SYSTEM

CENTRAL ELECTRICAL SYSTEM

