



PORSCHE



All you need now is the right tyre

**Recommendations for your
Porsche Classic Vehicle summer tyre**

Recommended makes and types of summer tyres

911/912 up to 1968

Wheel size	Size	RO	Axles	Tyre size	Tread designation	Spec.	Characteristics		Vehicles
							Dry handling	Wet handling	
15-inch	6Jx15	36	FA/RA	185/70 R15 89V	Michelin XWX ¹⁾	¹⁾	++	++	911, all models up to 1968
					Fulda Y - 2000	N0	+	++	
	6Jx15	36	FA/RA	195/65 R15 91V	Pirelli P6000 ²⁾	N1	++	+	911, '65 - '67 models 911 S, '67 & '68 models 911 L and T, '68 model 912, '66 - '68 models
					Goodyear Excellence	N0	+	++	
					Fulda Carat Progresso	N0	+	++	
					Dunlop SP Sport FastResponse	N0	++	++	

911 as of 1969

Wheel size	Size	RO	Axles	Tyre size	Tread designation	Spec.	Characteristics		Vehicles			
							Dry handling	Wet handling				
15-inch	6Jx15	36	FA	195/65 R15 94W	Pirelli P 6000 ²⁾	N1	++	+	911, as of '69 model			
	7Jx15	23,3	RA	215/60 R15 94W	Pirelli P 6000 ²⁾	N1	++	+				
16-inch	6Jx16	36	FA	205/55 ZR16	Pirelli P-Zero Direzionale	N3	++	++	911, as of '69 model			
					Bridgestone Potenza S-02	N3	0	++				
					Continental ContiSportContact	N1	+	+++				
					Michelin SX MXX3	N2	++	++				
					Michelin Pilot Exalto PE2	N0	+	+++				
					Pirelli P-Zero Direzionale	N3	++	++				
	7Jx16	23,3	RA	205/55 ZR16	Bridgestone Potenza S-02	N3	0	++				
					Continental ContiSportContact	N1	+	+++				
					Michelin SX MXX3	N2	++	++				
					Michelin Pilot Exalto PE2	N0	+	+++				
					Pirelli P-Zero Asimmetrico	N3	++	++				
					Bridgestone Potenza S-02	N3	++	+				
	6Jx16	36	FA	205/55 ZR16	Pirelli P-Zero Direzionale	N3	++	++	911, as of '69 model			
					Bridgestone Potenza S-02	N3	++	+				
Continental ContiSportContact					N1	+	+++					
Michelin SX MXX3					N2	+	+					
Michelin Pilot Exalto PE2					N0	+	+++					
Pirelli P-Zero Asimmetrico					N3	++	++					
7Jx16	23,3	RA	225/50 ZR16	Bridgestone Potenza S-02	N3	++	+					
				Continental ContiSportContact	N1	+	+++					
				Michelin SX MXX3	N2	+	+					
				Michelin Pilot Exalto PE2	N0	+	+++					

911 Turbo (930) up to 1989

Wheel size	Size	RO	Axles	Tyre size	Tread designation	Spec.	Characteristics		Vehicles
							Dry handling	Wet handling	
16-inch	7Jx16	23,3	FA	205/55 ZR16	Pirelli P-Zero Direzionale	N3	++	++	911 Turbo ('75 - '89 models) 911 Carrera "Turbo Look" ('85 - '86 models)
					Bridgestone Potenza S-02	N3	+	++	
					Continental ContiSportContact	N1	++	+++	
					Michelin SX MXX3	N2	+	+	
					Pirelli P-Zero Asimmetrico	N3	++	++	
	8Jx16	10,6	RA	225/50 ZR16	Bridgestone Potenza S-02	N3	+	++	
					Continental ContiSportContact	N1	++	+++	
					Michelin SX MXX3	N2	+	+	
	7Jx16	23,3	FA	205/55 ZR16	Michelin SX MXX3	N2	++	++	911 Turbo ('75 - '89 models)
					Continental ContiSportContact	N1	+++	+++	
	9Jx16	15	RA	245/45 ZR16	Michelin SX MXX3	N2	++	++	911 Carrera "Turbo Look" ('85 - '86 models)
					Continental ContiSportContact	N1	+++	+++	

0 = satisfactory; + = good; ++ = very good; +++ = excellent

¹⁾ Only one version of this tyre is produced. It therefore has no (!) specification code. However, it still meets all Porsche requirements and is therefore approved accordingly. This is the only tyre that may also be mounted with a tube. Mounting tyres with tubes is not permitted for all other tyres.

²⁾ Load index/speed index 91W

Only tyres of the same make and type, with the same speed index and the same specification code (N0, N1, N2 ...) may be used on a vehicle.

**Speed Index: V= 240 km/h (150 mph)
W= 270 km/h (169 mph)**

Further detailed information about permitted wheel and tyre sizes as well as spacers that may be required can be found in the relevant parts certificates/manufacturer's certificates held by the Porsche partners.

Recommended makes and types of summer tyres

911 (964)

Wheel size	Size	RO	Axles	Tyre size	Tread designation	Spec.	Characteristics		Vehicles			
							Dry handling	Wet handling				
16-inch	6Jx16	52/	FA	205/55 ZR16	Pirelli P-Zero Direzionale	N3	++	++	964 Carrera 2, '90 - '94 models			
					Michelin Pilot Exalto PE2	N0	0	+++		964 Carrera 4, '89 - '94 models		
		Bridgestone Potenza S-02			N3	++	++	964 Carrera RS, '92 model				
		Continental ContiSportContact			N1	+++	+++		964 Speedster, '93 & '94 models			
		Michelin SX MXX3			N2	+	++					
		8Jx16			52/	RA	225/50 ZR16	Pirelli P-Zero Asimmetrico	N3	++	++	
		52,3	Michelin Pilot Exalto PE2	N0	0			+++				
			Bridgestone Potenza S-02	N3	++			++				
			Continental ContiSportContact	N1	+++			+++				
			Michelin SX MXX3	N2	+			++				
		7Jx16	55	FA	205/55 ZR16	Michelin SX MXX3	N2	+	++	964 Carrera 2, '90 - '94 models		
	Bridgestone Potenza S-02					N3	++	+	964 Carrera 4, '89 - '94 models			
	Continental ContiSportContact					N1	+++	+++	964 Carrera RS, '92 model			
	9Jx16 *)	52,3	RA	245/45 ZR16	Michelin SX MXX3	N2	+	++	964 Speedster, '93 & '94 models			
					Bridgestone Potenza S-02	N3	++	+				
					Continental ContiSportContact	N1	+++	+++				
17-inch	7Jx17	55	FA	205/50 ZR17	Pirelli P-Zero Rosso	N3	++	+	964 Carrera 2, '90 - '94 models			
					Bridgestone Potenza S-02A	N4	++	++	964 Carrera 4, '89 - '94 models			
					Continental ContiSportContact2	N2	+++	+++	964 Carrera RS, '92 model			
					Michelin Pilot Sport PS2	N3	+++	++	964 Speedster, '93 & '94 models			
		8Jx17	52	RA	255/40 ZR17	Pirelli P-Zero Rosso	N3	++	+			
	Bridgestone Potenza S-02A					N4	++	++				
	Continental ContiSportContact2					N2	+++	+++				
	Michelin Pilot Sport PS2					N3	+++	++				
		7Jx17	55	FA	205/50 ZR17	Pirelli P-Zero Rosso	N3	++	++	964 Carrera 2, '90 - '94 models		
	Bridgestone Potenza S-02A					N4	+	+	964 Carrera 4, '89 - '94 models			
	Bridgestone Potenza S-02					N3	++	++	964 Carrera RS, '92 model			
	Continental ContiSportContact2					N2	++	+++	964 Speedster, '93 & '94 models			
	Michelin Pilot Sport PS2					N3	+++	+++				
	9Jx17	55	RA	255/40 ZR17	Pirelli P-Zero Rosso	N3	++	++				
Bridgestone Potenza S-02A					N4	+	+					
Bridgestone Potenza S-02					N3	++	++					
Continental ContiSportContact2					N2	++	+++					
Michelin Pilot Sport PS2					N3	+++	+++					

911 Turbo (964)

Wheel size	Size	RO	Axles	Tyre size	Tread designation	Spec.	Characteristics		Vehicles		
							Dry handling	Wet handling			
17-inch	7Jx17	55	FA	205/50 ZR17	Pirelli P-Zero Rosso	N3	++	++	964 Turbo, '91 & '92 models		
					Bridgestone Potenza S-02A	N4	+	+	964 Turbo S, '92 model		
					Bridgestone Potenza S-02	N3	++	++	964 C2 "Turbo Look", '92 - '93		
					Continental ContiSportContact2	N2	++	+++	964 C4 "Turbo Look", '93 & '94		
					Michelin Pilot Sport PS2	N3	+++	+++			
		9Jx17	55	RA	255/40 ZR17	Pirelli P-Zero Rosso	N3	++	++		
	Bridgestone Potenza S-02A					N4	+	+			
	Bridgestone Potenza S-02					N3	++	++			
	Continental ContiSportContact2					N2	++	+++			
	Michelin Pilot Sport PS2					N3	+++	+++			
	8Jx17	52	FA	225/45 ZR17	Bridgestone S01	N0	+	+	964 Turbo, '91 & '92 models		
					9.5Jx17 *)	68	RA	275/35 ZR17	Bridgestone S01	N0	+
									964 C2 "Turbo Look", '92 - '93		
									964 C4 "Turbo Look", '93 & '94		
18-inch	8Jx18	52	FA	225/40 ZR18	Pirelli P-Zero Zero	N4	++	+++	964 Turbo 3.6, '93 & '94 models		
					Bridgestone Potenza S-02A	N3	++	++			
					Continental ContiSportContact2	N2	++	++			
		10Jx18	65/	RA	265/35 ZR18	Michelin Pilot Sport PS2	N3	++	++		
						61	Pirelli P-Zero Zero	N4	++	+++	
						Bridgestone Potenza S-02A	N3	++	++		
						Continental ContiSportContact2	N2	++	++		
						Michelin Pilot Sport PS2	N3	++	++		

0 = satisfactory; + = good; ++ = very good; +++ = excellent
 *) 17-mm spacers on rear axle.

Only tyres of the same make and type, with the same speed index and the same specification code (N0, N1, N2 ...) may be used on a vehicle.

Further detailed information about permitted wheel and tyre sizes as well as spacers that may be required can be found in the relevant parts certificates/manufacturer's certificates held by the Porsche partners.

Recommended makes and types of summer tyres

911 (993)

	Size	RO	Axles	Tyre size	Tread designation	Spec.	Characteristics		Vehicles
							Dry handling	Wet handling	
Wheel size	7Jx16	55	FA	205/55 ZR16	Michelin SX MXX3	N2	++	++	993 Carrera, '94 - '98 models
16-inch	9Jx16	70	RA	245/45 ZR16	Continental ContiSportContact	N1	++	++	
					Michelin SX MXX3	N2	++	++	
					Continental ContiSportContact	N1	++	++	
Wheel size	7Jx17	55	FA	205/50 ZR17	Pirelli P-Zero Rosso	N3	++	+	993 Carrera, '94 - '98 models
17-inch	9Jx17	55	RA	255/40 ZR17	Bridgestone Potenza S-02A	N4	++	++	993 Carrera RS, '95 & '96
					Continental ContiSportContact2	N2	++	+++	993 Carrera S, '97 & '98 models
					Michelin Pilot Sport PS2	N3	++	+	
					Pirelli P-Zero Rosso	N3	++	+	
					Bridgestone Potenza S-02A	N4	++	++	
Continental ContiSportContact2	N2	++	+++						
Michelin Pilot Sport PS2	N3	++	+						
Wheel size	8Jx18	50/	FA	225/40 ZR18	Pirelli P-Zero Rosso	N4	++	++	993, '94 - '98 models
18-inch	10Jx18	65	RA	265/35 ZR18	Bridgestone Potenza S-02A	N3	+	+	993 Carrera RS, '95 & '96
					Continental ContiSportContact2	N2	+	++	not: Targa, Cabriolet before '96
					Pirelli P-Zero Rosso	N4	++	++	
Bridgestone Potenza S-02A	N3	+	+						
Continental ContiSportContact2	N2	+	++						

911 Turbo (993)

	Size	RO	Axles	Tyre size	Tread designation	Spec.	Characteristics		Vehicles
							Dry handling	Wet handling	
Wheel size	8Jx18	52	FA	225/40 ZR18	Pirelli P-Zero Rosso	N4	+++	+++	993 Turbo
18-inch	10Jx18	40/ 65*)	RA	285/30 ZR18	Bridgestone Potenza S-02A	N3	+	++	993 Carrera S
					Continental ContiSportContact2	N2	+++	+++	993 Carrera 4S
					Michelin Pilot Sport PS2	N3	+++	+	993 Turbo Look
					Pirelli P-Zero Rosso	N4	+++	+++	
Bridgestone Potenza S-02A	N3	+	++						
Continental ContiSportContact2	N2	+++	+++						
Michelin Pilot Sport PS2	N3	+++	+						

959

	Size	RO	Axles	Tyre size	Tread designation	Spec.	Characteristics		Vehicles
							Dry handling	Wet handling	
Wheel size	8Jx17 DL	44	FA	235/45 ZR17	Bridgestone RE 71	N0	+	+	959
17-inch	10Jx17 DL	28.3	RA	255/40 ZR17	Bridgestone RE 71	N0	+	+	

0 = satisfactory; + = good; ++ = very good; +++ = excellent
*) with 25-mm spacer on each wheel on rear axle.

Only tyres of the same make and type, with the same speed index and the same specification code (N0, N1, N2 ...) may be used on a vehicle.

Further detailed information about permitted wheel and tyre sizes as well as spacers that may be required can be found in the relevant parts certificates/manufacturers' certificates held by the Porsche partners.

Recommended makes and types of summer tyres

924

	Size	RO	Axles	Tyre size	Tread designation	Spec.	Characteristics		Vehicle
							Dry handling	Wet handling	
Wheel size 15-inch	6Jx15	36	FA/RA	185/70 R15 89V	Michelin XWX ¹⁾	¹⁾	++	++	924, '76 - '85 models
					Fulda Y - 2000	N0	+	++	924 S, '86 - '88 models
									924 Turbo, '79 - '82 models
									924 Carrera GT, '81 model
	7Jx15	23,3	FA/RA	195/65 R15 91V	Pirelli P 6000 ²⁾	N1	++	+	924, '76 - '85 models
					Goodyear Excellence	N0	+	++	924 S, '86 - '88 models
					Fulda Carat Progresso	N0	+	+++	924 Turbo, '79 - '82 models
					Dunlop SP Sport FastResponse	N0	++	++	924 Carrera GT, '81 model
	7Jx15	23,3	FA/RA	215/60 R15 94W	Pirelli P 6000 ²⁾	N1	++	+	924 Turbo, '79 - '82 models
									924 Carrera GT, '81 model
Wheel size 16-inch	6Jx16	52,3/ 53	FA/RA	205/55 ZR16	Pirelli P-Zero Direzionale	N3	++	++	924 Turbo, '79 - '82 models
					Bridgestone Potenza S-02	N3	0	++	924 S, '86 - '88 models
					Continental ContiSportContact	N1	+	+++	
					Michelin SX MXX3	N2	++	++	
					Michelin Pilot Exalto PE2	N0	+	+++	
	6Jx16	52,3/ 53	FA	205/55 ZR16	Pirelli P-Zero Direzionale	N3	++	++	924 Turbo, '79 - '82 models
					Bridgestone Potenza S-02	N3	0	++	924 S, '86 - '88 models
					Continental ContiSportContact	N1	+	+++	
					Michelin SX MXX3	N2	++	++	
					Michelin Pilot Exalto PE2	N0	+	+++	
	7Jx16	52,3/ 55	RA	205/55 ZR16	Pirelli P-Zero Direzionale	N3	++	++	
					Bridgestone Potenza S-02	N3	0	++	
					Continental ContiSportContact	N1	+	+++	
					Michelin SX MXX3	N2	++	++	
					Michelin Pilot Exalto PE2	N0	+	+++	

0 = satisfactory; + = good; ++ = very good; +++ = excellent

¹⁾ Only one version of this tyre is produced. It therefore has no (!) specification code. However, it still meets all Porsche requirements and is therefore approved accordingly.

²⁾ Load index/speed index 91W

Only tyres of the same make and type, with the same speed index and the same specification code (N0, N1, N2 ...) may be used on a vehicle.

Further detailed information about permitted wheel and tyre sizes as well as spacers that may be required can be found in the relevant parts certificates/manufacturer's certificates held by the Porsche partners.

**Speed Index: V= 240 km/h (150 mph)
W= 270 km/h (169 mph)**

Recommended makes and types of summer tyres

944

Wheel size	Size	RO	Axles	Tyre size	Tread designation	Spec.	Characteristics		Vehicles	
							Dry handling	Wet handling		
16-inch	7Jx16	23,3	FA/RA	205/55 ZR16	Pirelli P-Zero Direzionale	N3	++	++	944, '82 - '86 models	
					Michelin Pilot Exalto PE2	N0	0	++		
					Bridgestone Potenza S-02	N3	+	+++		
					Continental ContiSportContact	N1	++	++		
					Michelin SX MXX3	N2	+	+++		
	7Jx16	23,3	FA	205/55 ZR16	Pirelli P-Zero Direzionale	N3	++	++	944, '82 - '86 models	
					Bridgestone Expedia S-02	N3	++	+		944 Turbo, '85 - '86 models
					Continental ContiSportContact	N1	+	+++		
					Michelin SX MXX3	N2	+	+		
					Michelin Pilot Exalto PE2	N0	+	+++		
	8Jx16	23,3	RA	225/50 ZR16	Pirelli P-Zero Assimetrico	N3	++	++		
					Bridgestone Expedia S-02	N3	++	+		
					Continental ContiSportContact	N1	+	+++		
					Michelin SX MXX3	N2	+	+		
					Michelin Pilot Exalto PE2	N0	+	+++		
	7Jx16	52,3/ 55	FA	205/55 ZR16	Pirelli P-Zero Direzionale	N3	++	++	944, '87 - '89 models	
					Bridgestone Expedia S-02	N3	++	+		944 S, '87 - '88 models
					Continental ContiSportContact	N1	+	+++	944 S2, '89 - '91 models	
					Michelin SX MXX3	N2	+	+		
					Michelin Pilot Exalto PE2	N0	+	+++		
	8Jx16	52,3/ 52	RA	225/50 ZR16	Pirelli P-Zero Assimetrico	N3	++	++		
					Bridgestone Expedia S-02	N3	++	+		
					Continental ContiSportContact	N1	+	+++		
					Michelin SX MXX3	N2	+	+		
					Michelin Pilot Exalto PE2	N0	+	+++		
	7Jx16	65	FA	225/50 ZR16	Michelin SX MXX3	N2	+++	++	944 Turbo S	
					Bridgestone Expedia S-01	N2	++	++		944 S2, R01 chassis
					Bridgestone Potenza S-02	N3	+	+++		
					Continental ContiSportContact	N1	+++	+++		
					Michelin SX MXX3	N2	+++	++		
	9Jx16	60	RA	245/45 ZR16	Bridgestone Expedia S-01	N2	++	++		
					Bridgestone Potenza S-02	N3	+	+++		
					Continental ContiSportContact	N1	+++	+++		
17-inch	7.5Jx17	65	FA	225/45 ZR17	Bridgestone Potenza S-02	N3	+++	+	944, '87 - '89 models	
					Michelin Pilot Sport PS2	N3	++	++		944 S, '87 - '88 models
	9Jx17	55	RA	255/40 ZR17	Bridgestone Potenza S-02	N3	+++	+	944 S2, '89 - '91 models	
					Michelin Pilot Sport PS2	N3	++	++		944 Turbo, '87 - '91 models

968

2/2008

968

Wheel size	Size	RO	Axles	Tyre size	Tread designation	Spec.	Characteristics		Vehicles
							Dry handling	Wet handling	
17-inch	7.5Jx17	65	FA	225/45 ZR17	Bridgestone Potenza S-02	N3	+++	+	968, '92 - '95 models
					Michelin Pilot Sport PS2	N3	++	++	
	9Jx17	55	RA	255/40 ZR17	Bridgestone Potenza S-02	N3	+++	+	
					Michelin Pilot Sport PS2	N3	++	++	

968 Turbo S

Wheel size	Size	RO	Axles	Tyre size	Tread designation	Spec.	Characteristics		Vehicles
							Dry handling	Wet handling	
18-inch	8Jx18	53	FA	235/40 ZR18	Pirelli P-Zero Rosso	N4	++	+++	968 Turbo S, '93 model
					10Jx18	65	RA	285/30 ZR18	

0 = satisfactory; + = good; ++ = very good; +++ = excellent

Only tyres of the same make and type, with the same speed index and the same specification code (N0, N1, N2 ...) may be used on a vehicle.

Further detailed information about permitted wheel and tyre sizes as well as spacers that may be required can be found in the relevant parts certificates/manufacturer's certificates held by the Porsche partners.

Recommended makes and types of summer tyres

928

Wheel size	Size	RO	Axles	Tyre size	Tread designation	Spec.	Characteristics		Vehicles
							Dry handling	Wet handling	
16-inch	7Jx16	65	FA/RA	225/50 ZR16	Pirelli P-Zero Asimmetrico	N3	++	++	928, '78 - '82 models
					Bridgestone Expedia S-01	N2	0	+	928 S, '80 - '86 models
					Bridgestone Potenza S-02	N3	++	+++	
					Continental ContiSportContact	N1	++	+++	
					Michelin SX MXX3	N2	+	+	
					Michelin Pilot Exalto PE2	N0	0	+++	
	7Jx16	65	FA	225/50 ZR16	Michelin SX MXX3	N2	+++	++	928 GT, up to '92
					Bridgestone Expedia S-01	N2	++	++	928 S4, CS, GT '89
					Bridgestone Potenza S-02	N3	+	+++	
					Continental ContiSportContact	N1	+++	+++	
					Michelin SX MXX3	N2	+++	++	
					Bridgestone Expedia S-01	N2	++	++	
	8Jx16	52,3	RA	245/45 ZR16	Bridgestone Potenza S-02	N3	+	+++	
					Continental ContiSportContact	N1	+++	+++	
					Michelin SX MXX3	N2	+++	++	
					Bridgestone Expedia S-01	N2	++	++	
					Bridgestone Potenza S-02	N3	+	+++	
					Continental ContiSportContact	N1	+++	+++	
17-inch	7.5 Jx17	65	FA	225/45 ZR17	Bridgestone Potenza S-02	N3	+++	+	928 S4, CS, GT '89, GTS
					Michelin Pilot Sport PS2	N3	++	++	
					Bridgestone Potenza S-02	N3	+++	+	
					Michelin Pilot Sport PS2	N3	++	++	

914

914

Wheel size	Size	RO	Axles	Tyre size	Tread designation	Spec.	Characteristics		Vehicles
							Dry handling	Wet handling	
15-inch	6Jx15	36	FA/RA	185/70 R15 89V	Michelin XWX ¹⁾	¹⁾	++	++	914, 914/6
					Fulda Y - 2000	N0	+	++	
	6Jx15	36	FA/RA	195/65 R15 91V	Pirelli P 6000 ²⁾	N1	++	+	914
					Goodyear Excellence	N0	+	++	914/6, '70 - '72 models
					Fulda Carat Progresso	N0	+	++	
					Dunlop SP Sport FastResponse	N0	++	++	
	6Jx15	36	FA	195/65 R15 94W	Pirelli P 6000 ²⁾	N1	++	+	914/6, '70 - '72 models
					7Jx15	23,3	RA	215/60 R15 94W	Pirelli P 6000 ²⁾

0 = satisfactory; + = good; ++ = very good; +++ = excellent

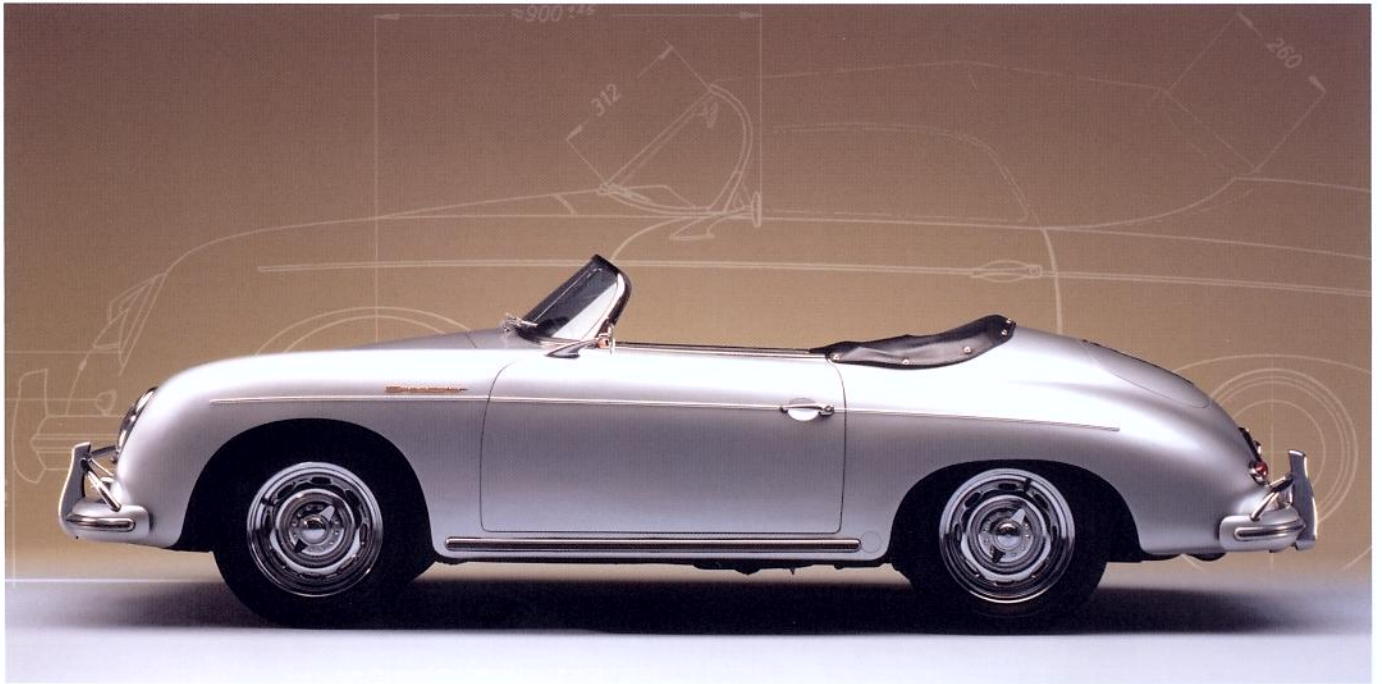
¹⁾ Only one version of this tyre is produced. It therefore has no (!) specification code. However, it still meets all Porsche requirements and is therefore approved accordingly. This is the only tyre that may also be mounted with a tube. Mounting tyres with tubes is not permitted for all other tyres.

²⁾ Load index/speed index 91W

Only tyres of the same make and type, with the same speed index and the same specification code (N0, N1, N2 ...) may be used on a vehicle.

**Speed Index: V= 240 km/h (150 mph)
W= 270 km/h (169 mph)**

Further detailed information about permitted wheel and tyre sizes as well as spacers that may be required can be found in the relevant parts certificates/manufacturer's certificates held by the Porsche partners.



Porsche and the Porsche Crest
are registered trademarks of
Dr. Ing. h.c. F. Porsche AG.

Dr. Ing. h.c. F. Porsche AG
Kundenzentrum-Classik
Werk 1/Tor 1
Porscheplatz 1
70435 Stuttgart, Germany
Classic restoration service:
Tel.: +49 (0) 711 911-27150
Fax: +49 (0) 711 911-27811
E-Mail: classic-service@porsche.de

Internet: www.porsche.com/classic

© Dr. Ing. h.c. F. Porsche AG, 2008

Edition: 06/08

Printed in Germany