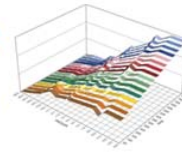




Engine Calibration

1949 E. Deere Ave, Santa Ana, CA 92705
(949) 863-1359 www.splitsec.com

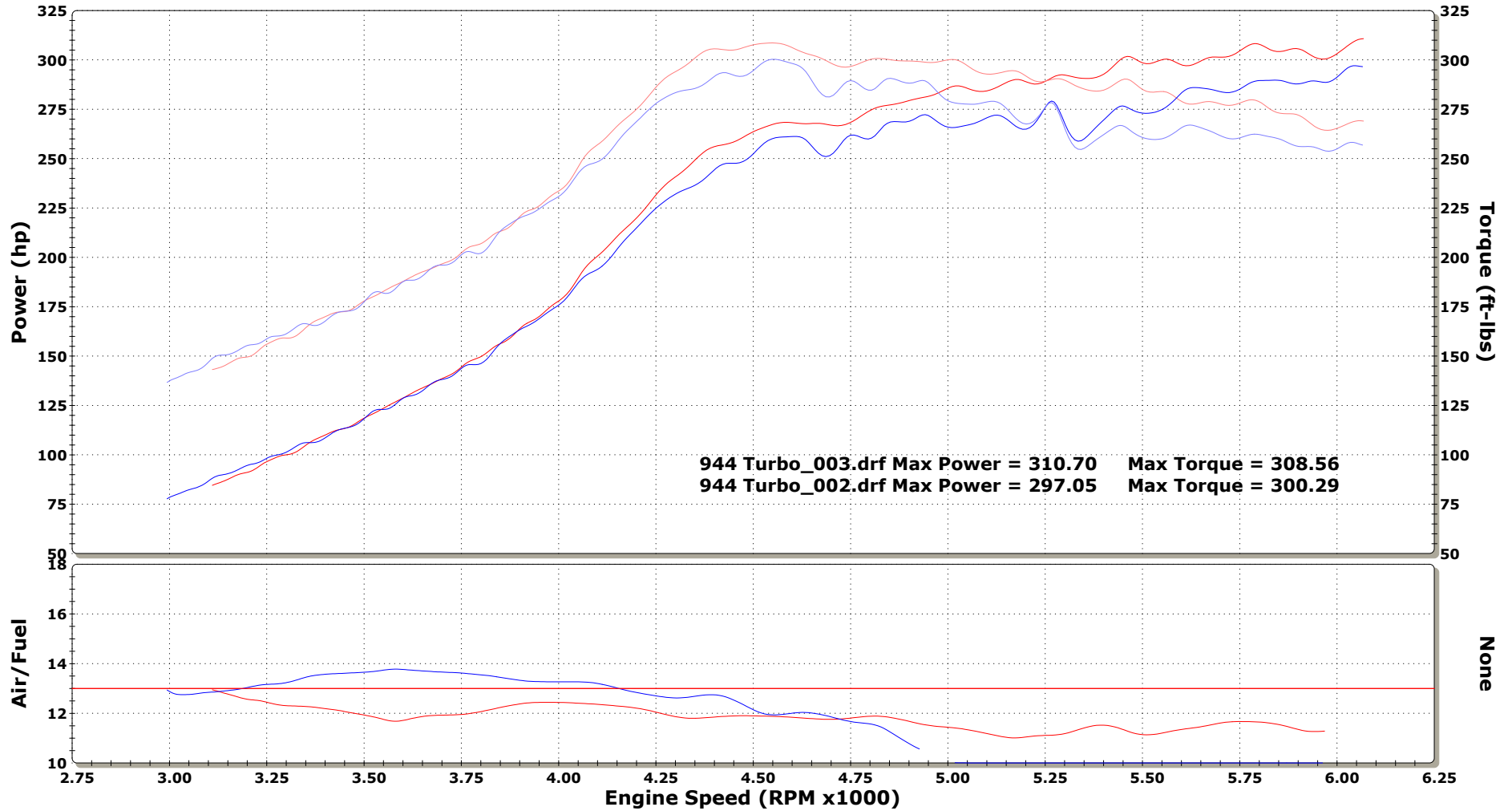


■ 944 Turbo_003.drf - PSC1-004 - Run Conditions: 81.06 °F, 30.05 in-Hg, SAE: 0.98
■ 944 Turbo_002.drf - Baseline - Run Conditions: 81.01 °F, 30.02 in-Hg, SAE: 0.98

DYNOJET RESEARCH

CF: SAE Smoothing: 5

Split Second - Santa Ana, CA - 949-863-1359



944 Turbo_003.drf - PSC1-004 - Run Conditions: 81.06 °F, 30.05 in-Hg, SAE: 0.98
Run Type: RO Date: 10/28/2011 2:09:32 PM

944 Turbo_002.drf - Baseline - Run Conditions: 81.01 °F, 30.02 in-Hg, SAE: 0.98
Run Type: RO Date: 10/27/2011 2:15:12 PM